

Form 3160-3  
(December 1990)

SUBMIT IN TRIPPLICATE\*  
(Other instructions on  
reverse side)

Form approved  
Budget Bureau No. 1004-0136  
Expires: December 31, 1991

UNITED STATES  
DEPARTMENT OF THE INTERIOR  
BUREAU OF LAND MANAGEMENT

APPLICATION FOR PERMIT TO DRILL OR DEEPEN

1a. TYPE OF WORK

DRILL ☒

DEEPEN ☐

b. TYPE OF WELL

OIL  
WELL ☐

GAS  
WELL ☒

OTHER

SINGLE  
ZONE ☒

MULTIPLE  
ZONE ☐

2. NAME OF OPERATOR

WILLIAMS PRODUCTION COMPANY OGRID 120782

3. ADDRESS AND TELEPHONE NO.

c/o Walsh Engr. & Prod. Corp.

7415 E. Main Farmington, N.M. 87402

(505) 327-4892

4. LOCATION OF WELL (Report location clearly and in accordance with any BLM requirements)

At surface

1205' FSL & 1845' FEL

At proposed prod. zone

Same

14. DISTANCE IN MILES AND DIRECTION FROM NEAREST TOWN OR POST OFFICE\*

25 miles NE of Blanco, NM

10. DISTANCE FROM PROPOSED\*

LOCATION TO NEAREST  
PROPERTY OR LEASE LINE, FT.  
(Also to nearest drig. unit line, if any)

852

16. NO. OF ACRES IN LEASE

2561.88

17. NO. OF ACRES ASSIGNED  
TO THIS WELL

320

18. DISTANCE FROM PROPOSED LOCATION\*  
TO NEAREST WELL, DRILLING, COMPLETED,  
OR APPLIED FOR, ON THIS LEASE, FT.

2200'

5930

19. PROPOSED DEPTH

21. ELEVATIONS (Show whether DF, RT, GR, etc.)

6247' GR

This action is subject to historical and  
procedural review pursuant to 43 CFR 3155.3  
and appeal pursuant to 43 CFR 3155.4.

22. APPROX. DATE WORK WILL START\*

May 1996

23. PROPOSED CASING AND CEMENTING PROGRAM

SIZE OF HOLE	GRADE, SIZE OF CASING	WEIGHT PER FOOT	SETTING DEPTH	QUANTITY OF CEMENT
12-1/4"	9-5/8", K-55	36.0	500	314 cuft C1 "B" w/3% CaCl2
8-3/4"	7", K-55	20.0	3530	785 cuft 65/35 Poz, 192 cuft C1
6-1/4"	4-1/2", K-55	10.5	3430-5930	410 cuft C1 "B" w/4% gel & additives

WILLIAMS PRODUCTION COMPANY proposes to drill a vertical well to develop the Mesa Verde formation at the above described site in accordance with the attached drilling and surface use programs.

DRILLING OPERATIONS AUTHORIZED ARE  
SUBJECT TO COMPLIANCE WITH ATTACHED  
"GENERAL REQUIREMENTS"

This location has been archaeologically surveyed by CRMC. Copies of the report will be submitted directly to your office.

This APD also is serving as an application to obtain BLM road and pipeline right-of-way. The well will be accessed by an existing road which crosses the SE/SE of Section 35, the W/2 and N/2 NE/4 of Section 36, T32N, R6W, NW/NW of Section 31, W/2 W/2 and SE/SW of Section 32, T32N, R5W, NW/SE and NE/SE of Section 5, and SW/SW of Section 4, T31N, R5W where it crosses Blanco Wash and connects with the main Rosa Road. The Rosa Road continues SW for 27 miles where it joins the Sims Mesa Highway.

IN ABOVE SPACE DESCRIBE PROPOSED PROGRAM: If proposal is to deepen, give data on present productive zone and proposed new productive zone. If proposal is to drill or deepen directionally, give pertinent data on subsurface locations and measured and true vertical depths. Give blowout prevention program, if any.

24

SIGNED Paul C. Thompson

TITLE Paul C. Thompson, Agent

DATE 2/21/96

(This space for Federal or State office use)

PERMIT NO.

APPROVAL DATE

Application approval does not warrant or certify that the applicant holds legal or equitable title to those rights in the subject lease which would enable the applicant to conduct operations thereon.

CONDITIONS OF APPROVAL, IF ANY

Hold C-104 For NSE NMOC

District I  
PO Box 1988, Hobbs, NM 88241-1988  
District II  
PO Drawer DD, Artesia, NM 88211-0719  
District III  
1000 Rio Brazos Rd., Aztec, NM 87410  
District IV  
PO Box 2088, Santa Fe, NM 87504-2088

State of New Mexico  
Energy, Minerals & Natural Resources Department

OIL CONSERVATION DIVISION  
PO Box 2088  
Santa Fe, NM 87504-2088

Form C-102  
Revised February 21, 1994  
Instructions on back  
Submit to Appropriate District Office  
State Lease - 4 Copies  
Fee Lease - 3 Copies

☐ AMENDED REPORT

### WELL LOCATION AND ACREAGE DEDICATION PLAT

API Number <i>30-034-25790</i>		Pool Code 72319	Pool Name BLANCO MESA VERDE
Property Code <del>008480</del> <i>17033</i>	Property Name Rosa Unit		Well Number 91A
OGRID No. 120782	Operator Name Williams Production Co.		Elevation 6247'

#### <sup>10</sup> Surface Location

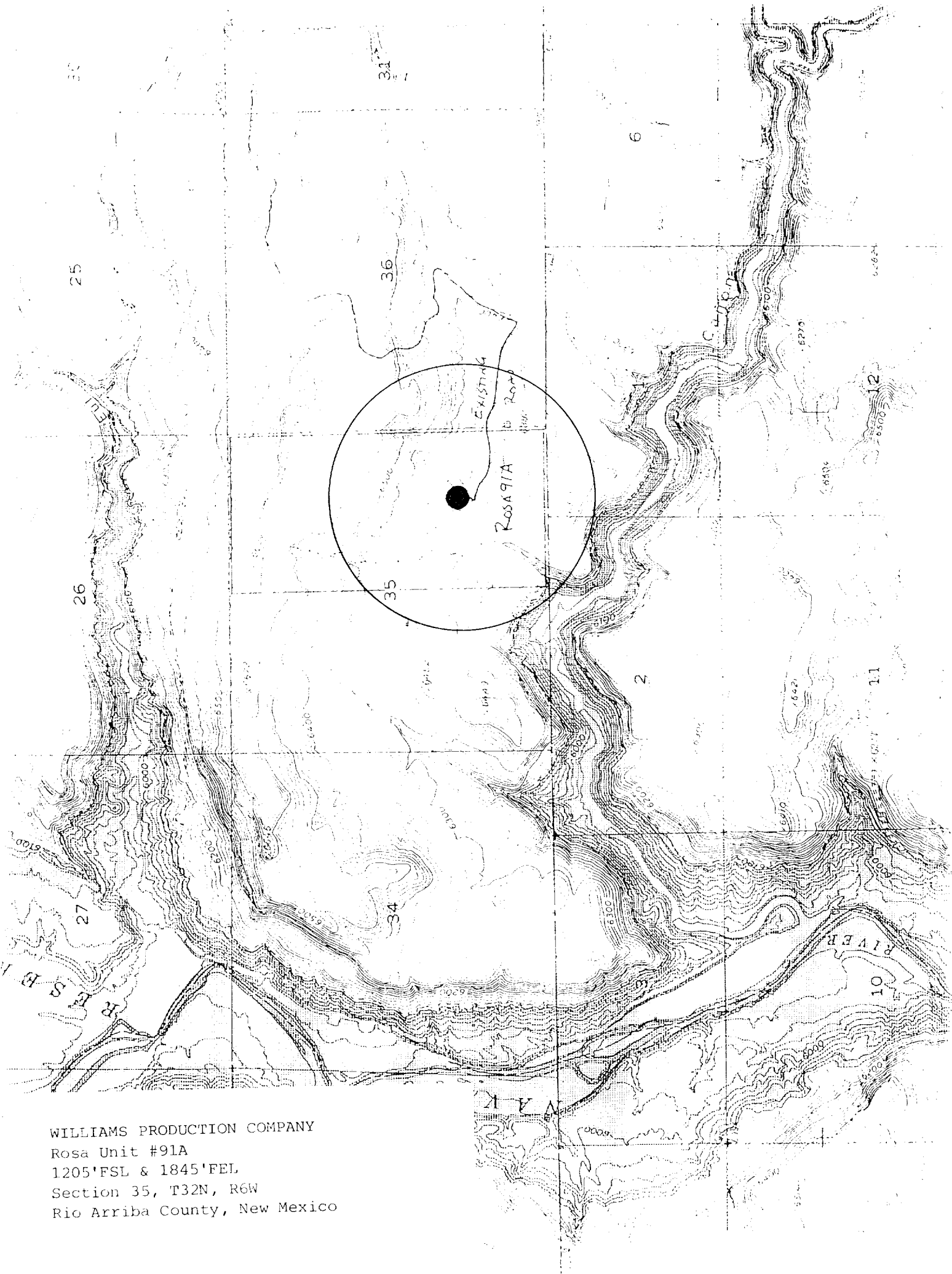
UL or lot no.	Section	Township	Range	Lot Ida	Feet from the	North/South line	Feet from the	East/West line	County
O	35	32 N	6 W		1205	South	1845	East	R.A.

#### <sup>11</sup> Bottom Hole Location If Different From Surface

UL or lot no.	Section	Township	Range	Lot Ida	Feet from the	North/South line	Feet from the	East/West line	County
<sup>12</sup> Dedicated Acres 320		<sup>13</sup> Joint or Infill N		<sup>14</sup> Consolidation Code U		<sup>15</sup> Order No.			

NO ALLOWABLE WILL BE ASSIGNED TO THIS COMPLETION UNTIL ALL INTERESTS HAVE BEEN CONSOLIDATED  
OR A NON-STANDARD UNIT HAS BEEN APPROVED BY THE DIVISION

<div>16</div> <div>2632.74'</div> <div>5357.28'</div> <div>2691.48'</div>	<div>35</div>	<div>2657.82'</div> <div>1205'</div> <div>2696.76'</div>	<div>17 OPERATOR CERTIFICATION</div> <p>I hereby certify that the information contained herein is true and complete to the best of my knowledge and belief</p> <p><i>Paul C. Thompson</i> Signature Paul C. Thompson, Agent Printed Name President Walsh Engr. &amp; Prod. Corp. Title 2/21/96 Date</p>	
			<div>18 SURVEYOR CERTIFICATION</div> <p>I hereby certify that the well location shown on this plat was plotted from field notes of actual surveys made by me or under my supervision, and that the same is true and correct to the best of my belief.</p> <p>11-13-95 Date of Survey</p> <p><i>NEALE C. EDWARDS</i> Signature and Seal of Professional Surveyor 8857 8857 Certificate Number</p>	



WILLIAMS PRODUCTION COMPANY  
Rosa Unit #91A  
1205'FSL & 1845'FEL  
Section 35, T32N, R6W  
Rio Arriba County, New Mexico