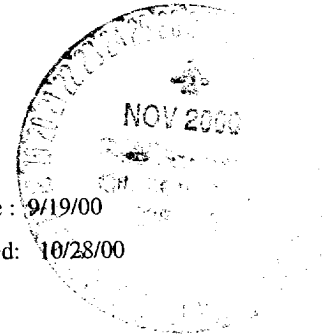


ROSA UNIT #129A
BLANCO MESAVERDE



Spud date : 9/19/00

Completed: 10/28/00

Location:

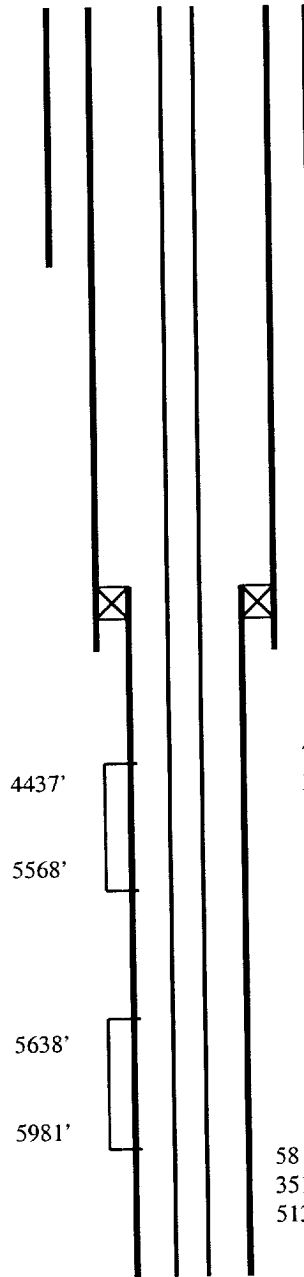
1680' FSL and 1965' FWL
NE/4 SW/4 Sec 34(K), T32N R06W
Rio Arriba, New Mexico
Elevation: 6357' GR

<u>Top</u>	<u>Depth</u>
Pictured Cliffs	3129'
Lewis	3556'
CliffHouse	5377'
Menefee	5424'
Point Lookout	5640'

STIMULATION

CliffHouse/Menefee: 4437' - 5568'
(34, 0.38" holes) Frac with 80,000#
20/40 sand in 1931 bbls slick water.

Point Lookout: 5638' - 5981' (37,
0.38" holes) Frac with 80,000# 20/40
sand in 1935 bbls slick water.



11 jts 9-5/8", 36#, K-55, LT&C csg. Landed @ 510'
Cemented with 255 sx cmt

TIW liner hanger.
TOL @ 3510'

79 jts 7", 20#, K-55, ST&C csg. Landed @ 3610'.
Float @ 3565'. Cemented with 585 sx cmt.

190 jts 2-3/8", 4.7#, J-55, EUE, 8rd tbg w/
1/2" mule shoe on bottom and SN 1 jt up.
Landed @ 5926'

58 jts 4-1/2", 10.5#, K-55 ST&C csg. Landed @
3510' - 6076'. Latch collar @ 6031' & marker jt @
5137'. Cemented with 265 sx cmt

TD @ 6069'
PBDT @ 6031'

Hole Size	Casing	Cement	Volume	Top Of CMT
12-1/4"	9-5/8", 36#	255 sx	354 cu. Ft.	surface
8-3/4"	7", 20#	585 sx	1087 cu ft.	surface
6-1/4"	4-1/2", 10.5#	265 sx	385 cu. Ft.	3510'



LTR



Job separation sheet

UNITED STATES
DEPARTMENT OF INTERIOR
BUREAU OF LAND MANAGEMENT

FORM APPROVED
Budget Bureau No. 1004-0135
Expires: March 31, 1993

SUNDRY NOTICE AND REPORTS ON WELLS

Do not use this form for proposals to drill or to deepen or reentry to a different reservoir. Use "APPLICATION TO DRILL" for permit for such proposals

5. Lease Designation and Serial No.
SF-078772

6. If Indian, Allottee or Tribe Name

7. If Unit or CA, Agreement Designation
ROSA UNIT

8. Well Name and No.
ROSA UNIT #129A

9. API Well No.
30-039-26297

10. Field and Pool, or Exploratory Area
BLANCO MV

11. County or Parish, State
RIO ARRIBA, NM

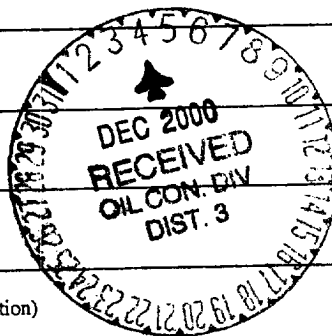
SUBMIT IN TRIPLICATE

1. Type of Well
Oil Well ☒ Gas Well ☐ Other ☐

2. Name of Operator
WILLIAMS PRODUCTION COMPANY

3. Address and Telephone No.
PO BOX 3102 MS 37-2, TULSA, OK 74101 (918) 573-6254

4. Location of Well (Footage, Sec., T., R., M., or Survey Description)
1680' FSL & 1965' FWL, NE/4 SW/4 SEC 34-32N-6W



CHECK APPROPRIATE BOX(s) TO INDICATE NATURE OF NOTICE, REPORT, OR OTHER DATA

TYPE OF SUBMISSION	TYPE OF ACTION
Notice of Intent	Abandonment
X Subsequent Report	Recompletion
Final Abandonment	Plugging Back
	Casing Repair
	Altering Casing
	X Other <u>COMPLETION OPERATIONS</u>
	Change of Plans
	New Construction
	Non-Routine Fracturing
	Water Shut-Off
	Conversion to Injection
	Dispose Water
	(Note: Report results of multiple completion on Well Completion or Recompletion Report and Log form.)

13. Describe Proposed or Completed Operations (Clearly state all pertinent details, and give pertinent dates, including estimated date of starting any proposed work. If well is directionally drilled, give subsurface locations and measured and true vertical depths for all markers and zones pertinent to this work.)*

10-21-2000 MIRU, secure location and SD for Sunday

10-23-2000 Finished moving all equipment on location & spot rig. Location is extremely muddy. Tallied tbq. RU Basin Perf & RIH for bond log. Ran log from 5930' to 3900'. PU 3-7/8" bit on 2-3/8" tbq & RIH to 4400'

10-24-2000 RIH w/ tbq to tag cmt & drill 90' to float collar. RU BJS & pressure test csg to 3500 psi, held 15 min. Spotted 500 gal 15% HCl acid @ 5975'. TOOH w/ tbq, standing back. Perf Point Lookout w/ 37 (0.38") holes @ the following intervals: 5638', 41', 44', 47', 53', 55', 58', 62', 64', 68', 74', 86', 89', 92', 95', 98', 5711', 14', 17', 19', 25', 27', 39', 52', 54', 62', 65', 5818', 64', 73', 5901', 05', 17', 21', 40', 75' & 81'. Recovered all sand, laid manifold

10-26-2000 Pressure test lines to 4500 psi. Ball off Point Lookout w/ 1000 gal 15% HCl acid & 60 bbls, action good & complete. RIH w/ 4 1/2" junk bskt to recover 56 balls w/ 34 hits. Frac Point Lookout w/ 80,000# 20/40 Ariz sand @ 105 bpm @ 3000 psi. RIH w/ CIBP & set @ 5625'. Load hole & pressure test to 3500 psi, held 15 min. RIH w/dump bailer & spotted 15 gal 28% HCl acid @ 5526'. Perf, top down, with 35 (0.38") total holes @ the following intervals: 4437', 43', 51', 57', 66', 77', 4628', 36', 42', 50', 4743', 82', 86', 5046', 72', 77', 90', 94', 5156', 73', 5215', 22', 5304', 89', 92', 5423', 46', 48', 52', 56', 65', 69', 5526' & 68'. Ball off CH/Men w/ 1000 gal 15% HCl acid & 60 balls, action good & complete. Recovered 49 balls w/ 35 hits. Frac CH/Men w/ 80,000# 20/40 Ariz sand @ 95 bpm @ 2800 psi. RIH w/ tbq, rotated through liner top, then pulled up to 7"

Continued on reverse side

14. I hereby certify that the foregoing is true and correct

Signed Tracy Ross
Tracy Ross

Title Production Analyst

Date November 20, 2000 **ACCEPTED FOR RECORD**

(This space for Federal or State office use)

Approved by _____

Title _____

Date NOV 28 2000

Conditions of approval, if any:

FARMINGTON FIELD OFFICE
BY [Signature]

10-27-2000 RIH w/ tbg & 3-7/8" bit to tag 35' fill. RU air pkg & CO to CIBP. Ran 3 sweeps. RU power swivel & drilled CIEP. Chased bal of plug to bottom, had 65' of sand. Ran sweeps each 45 min w/ lots of help from lower zone. TOOH w/ tbg & bit. Pitot reading: 42# on 2" = 4843 mcfd. Well was not communicated behind csg. Let well blow on it's own

10-28-2000 RIH w/ 2-3/8" tbg w/ 1/2" mule hoe on bottom. Tagged 34' sand. Ran 2 sweeps w/ lots of help from bottom zone. Pulled up & landed 190 jts 2-3/8", J-55, EUE 8rd 4.7# tbg w/ 1/2" mule shoe on bottom & SN 1 jt up @ 5925.79'. NDBOP, NUWH. Release rig @ 1240 hrs