

District I  
PO Box 1980, Hobbs, NM 88241-1980  
District II  
811 South First, Artesia, NM 88210  
District III  
1000 Rio Brazos Rd., Aztec, NM 87410  
District IV  
2040 South Pacheco, Santa Fe, NM 87505

State of New Mexico  
Energy, Minerals & Natural Resources Department

OIL CONSERVATION DIVISION  
2040 South Pacheco  
Santa Fe, NM 87505

Form C-101  
Revised October 18, 1994  
Instructions on back  
Submit to Appropriate District Office  
State Lease - 6 Copies  
Fee Lease - 5 Copies  
☐ AMENDED REPORT

APPLICATION FOR PERMIT TO DRILL, RE-ENTER, DEEPEN, PLUGBACK, OR ADD A ZONE

<sup>1</sup> Operator Name and Address. Williams Production Company P.O. Box 3102, MS 37-2 Tulsa, OK 74101		<sup>2</sup> OGRID Number 120782
<sup>4</sup> Property Code 17033	<sup>5</sup> Property Name Rosa Unit	<sup>3</sup> API Number 30-039-26398 <sup>6</sup> Well No. 357

<sup>7</sup> Surface Location

UL or lot no. B	Section 36	Township 32N	Range 6W	Lot Idn	Feet from the 1045'	North/South line North	Feet from the 1805'	East/West line East	County Rio Arriba
--------------------	---------------	-----------------	-------------	---------	------------------------	---------------------------	------------------------	------------------------	----------------------

<sup>8</sup> Proposed Bottom Hole Location If Different From Surface

UL or lot no.	Section	Township	Range	Lot Idn	Feet from the	North/South line	Feet from the	East/West line	County
<sup>9</sup> Proposed Pool Basin Fruitland Coal -71629					<sup>10</sup> Proposed Pool 2				

<sup>11</sup> Work Type Code N	<sup>12</sup> Well Type Code G	<sup>13</sup> Cable/Rotary Rotary	<sup>14</sup> Lease Type Code S	<sup>15</sup> Ground Level Elevation 6640' GR
<sup>16</sup> Multiple No	<sup>17</sup> Proposed Depth 3420' KB	<sup>18</sup> Formation Basin Fruitland Coal	<sup>19</sup> Contractor Aztec Well Service	<sup>20</sup> Spud Date April 25, 2000

<sup>21</sup> Proposed Casing and Cement Program

Hole Size	Casing Size	Casing weight/foot	Setting Depth	Sacks of Cement	Estimated TOC
12-1/4"	9-5/8" K-55	36#	250' KB	125 sx (176 cuft)	Surface
8-3/4"	7" K-55	20#	3315' KB	495 sx (996 cuft)	Surface
6-1/4"	5-1/2"	15.5#	3420' KB	Open hole Comp.	Top of Liner

<sup>23</sup> Describe the proposed program. If this application is to DEEPEN or PLUG BACK give the data on the present productive zone and proposed new productive zone. Describe the blowout prevention program, if any. Use additional sheets if necessary.

Williams Exploration & Production proposes to drill a vertical well with an 12-1/4" hole with water to approx. 250' KB and set 9-5/8" 36# K55 surface casing, cement to surface with 125 sx of Class Type III, 2% CaCl2 (176 cu ft). Drill 8-3/4" hole to 3315' KB, set 7" K-55 casing. Cement Lead with 445 sx (926 cu ft) of Premium Lite 35/65 Poz/Type III, with 8% gel, 1% CaCl2; Cement Tail with 50 sx (70 cuft) of class Type III with 1% CaCl2. Drill 6-1/4" hole to 3420'KB, set 5-1/2" K-55 casing, set production liner, open hole completion, no cement. Coal section will be drilled with coal water. Run cased hole log (TMDL). While drill pipe in use run not less than one BOP test per day. Set 9-5/8" 36# K-55 production casing from 250'KB to surface, set 7", 20# K-55 casing from 250'KB to 3315'KB, and set 5-1/2" 10.5# K-55 casing from 3315'KB to 3420'KB. Top of cement should circulate to surface ( will adjust volumes based upon caliper log). Pressure test 7" & 5-1/2" casing to 3300# for 15 minutes. Fruitland Coal Run 2-3/8", 4.6#, J-55 EUE tubing with a SN (1.375" ID) on top of bottom joint. Land tubing 50' above TD. Cavitate for 2 to 3 weeks. Maximum pressure not expected to exceed 2000 psi. Surface ownership is Federal (BLM). Will obtain surface ROW. Formation tops: (KB) Nacimiento- 1290', Ojo Alamo-2675', Kirtland-2785', Fruitland-3220', Base to Coal-3420' TD 3420'.

<sup>24</sup> I hereby certify that the information given above is true and complete to the best of my knowledge and belief.

Signature: *Steve Nelson*  
Printed name: Steve Nelson  
Title: Agent, Nelson Consulting, Inc.  
Date: March 21, 2000

OIL CONSERVATION DIVISION

Approved by:

Title: SUPERVISOR DISTRICT # 3

Approval Date: MAR 22 2000

Expiration Date: MAR 22 2001

Conditions of Approval :  
Attached ☐

Phone: 505-327-6331

District I  
PO Box 1980, Hobbs, NM 88241-1980

District II  
PO Drawer DD, Artesia, NM 88211-0719

District III  
1000 Rio Brazos Rd., Aztec, NM 87410

District IV  
PO Box 2088, Santa Fe, NM 87504-2088

State of New Mexico  
Energy, Minerals & Natural Resources Department

OIL CONSERVATION DIVISION  
PO Box 2088  
Santa Fe, NM 87504-2088

Form C-102  
Revised February 21, 1994  
Instructions on back  
Submit to Appropriate District Office  
State Lease - 4 Copies  
Fee Lease - 3 Copies

☐ AMENDED REPORT

WELL LOCATION AND ACREAGE DEDICATION PLAT

*API Number 30-039-26398		*Pool Code 71629	*Pool Name Basin Fruitland Coal
*Property Code 17033	*Property Name ROSA UNIT		*Well Number 357
*GRID No. 120782	*Operator Name WILLIAMS PRODUCTION COMPANY		*Elevation 6640'

<sup>10</sup> Surface Location

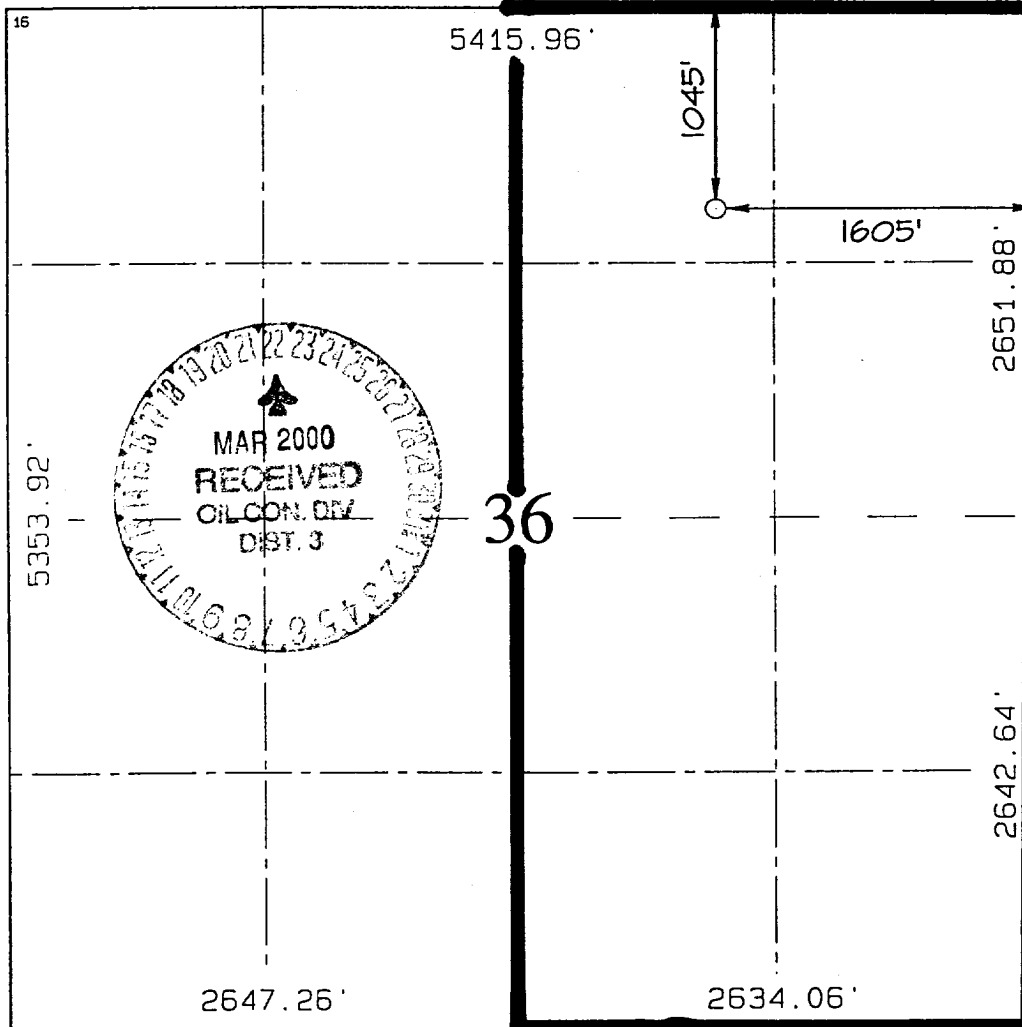
UL or lot no. B	Section 36	Township 32N	Range 6W	Lot Idn	Feet from the 1045	North/South line NORTH	Feet from the 1605	East/West line EAST	County RIO ARriba
--------------------	---------------	-----------------	-------------	---------	-----------------------	---------------------------	-----------------------	------------------------	----------------------

<sup>11</sup> Bottom Hole Location If Different From Surface

UL or lot no.	Section	Township	Range	Lot Idn	Feet from the	North/South line	Feet from the	East/West line	County
---------------	---------	----------	-------	---------	---------------	------------------	---------------	----------------	--------

<sup>12</sup> Dedicated Acres 320 - E/2	<sup>13</sup> Joint or Infill J	<sup>14</sup> Consolidation Code U	<sup>15</sup> Order No.
--	------------------------------------	---------------------------------------	-------------------------

NO ALLOWABLE WILL BE ASSIGNED TO THIS COMPLETION UNTIL ALL INTERESTS HAVE BEEN CONSOLIDATED  
OR A NON-STANDARD UNIT HAS BEEN APPROVED BY THE DIVISION



<sup>17</sup> OPERATOR CERTIFICATION

I hereby certify that the information contained herein is true and complete to the best of my knowledge and belief

*Steve Nelson*  
Signature  
Steve Nelson  
Printed Name  
Agent, Nelson Consulting  
Title  
March 21, 2000  
Date

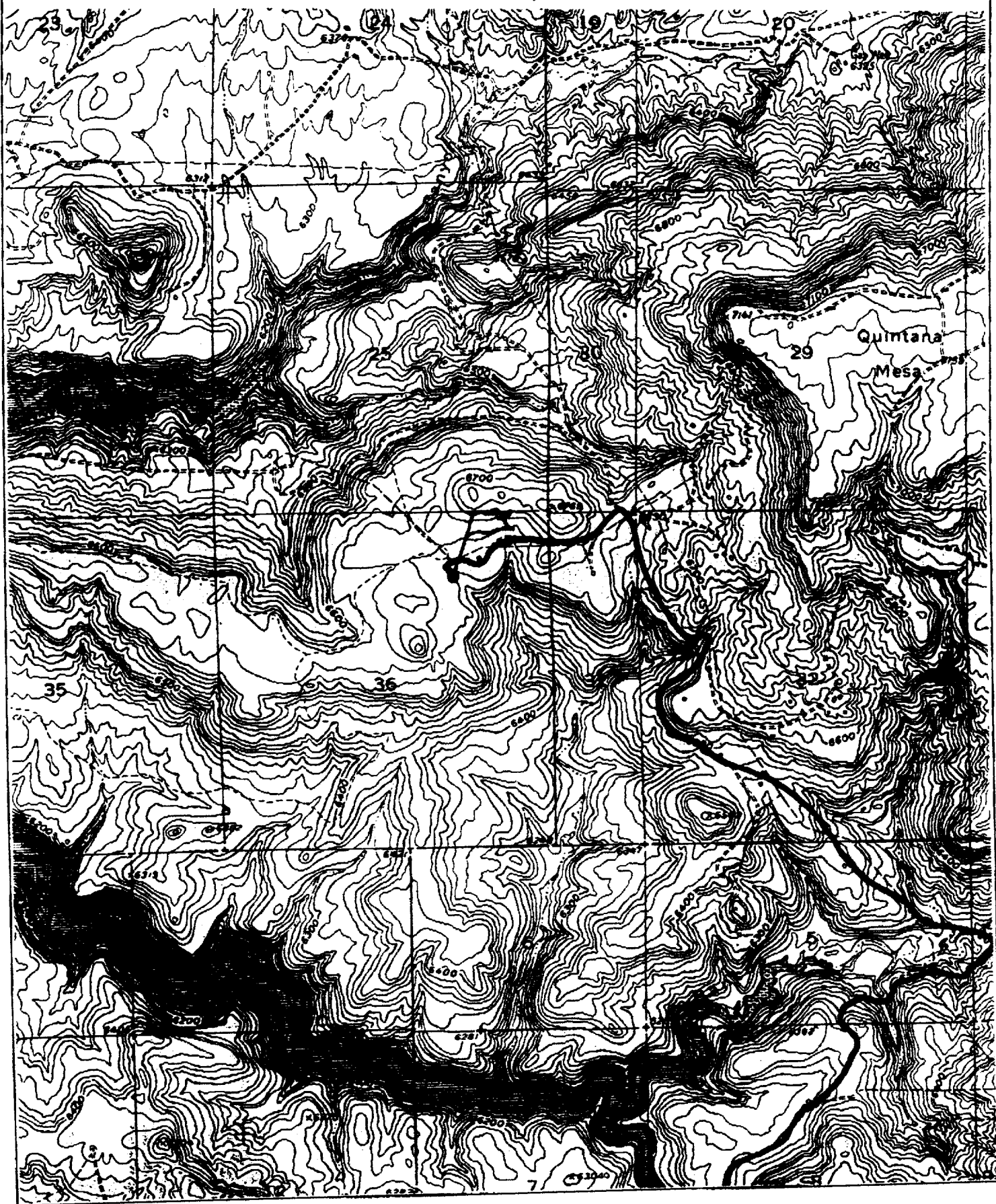
<sup>18</sup> SURVEYOR CERTIFICATION

I hereby certify that the well location shown on this plat was plotted from field notes of actual surveys made by me or under my supervision, and that the same is true and correct to the best of my belief.

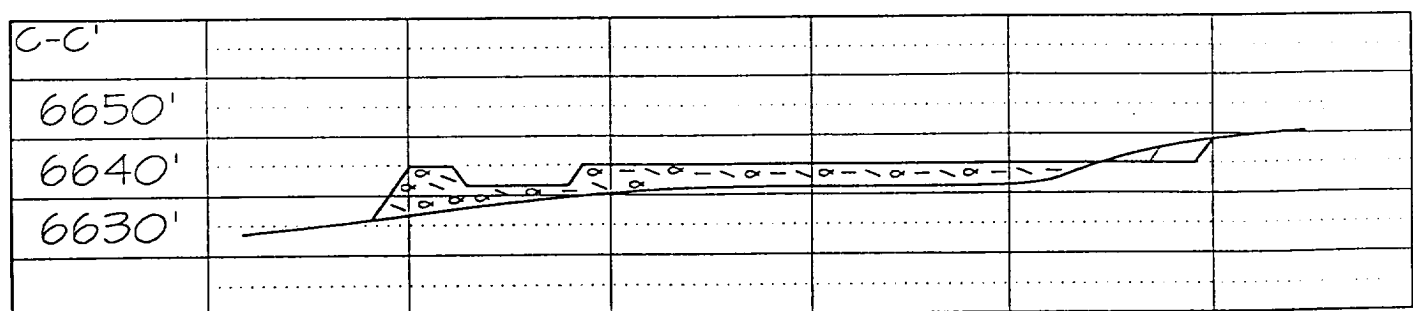
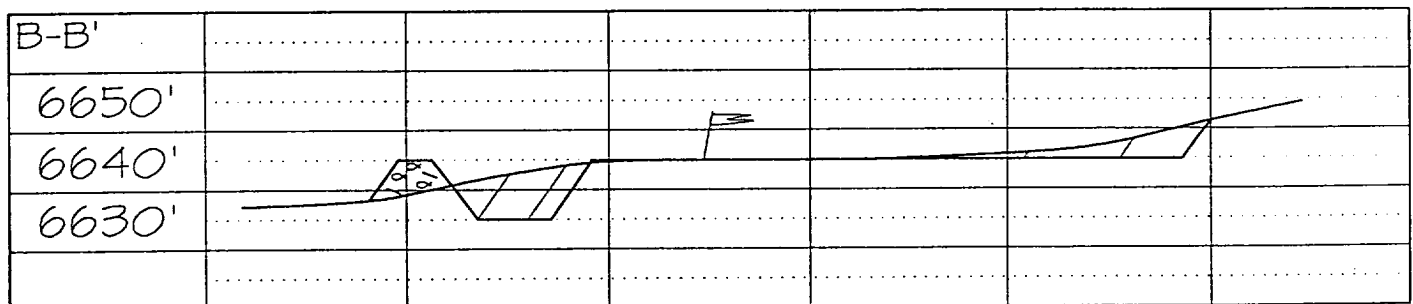
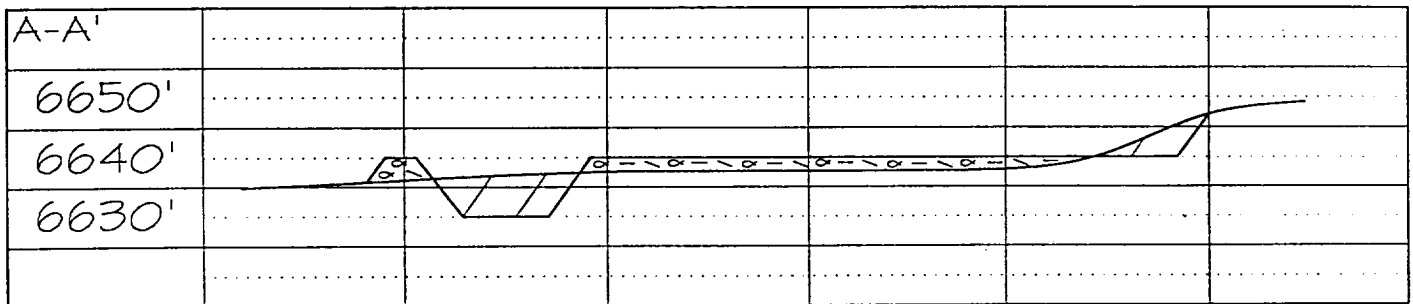
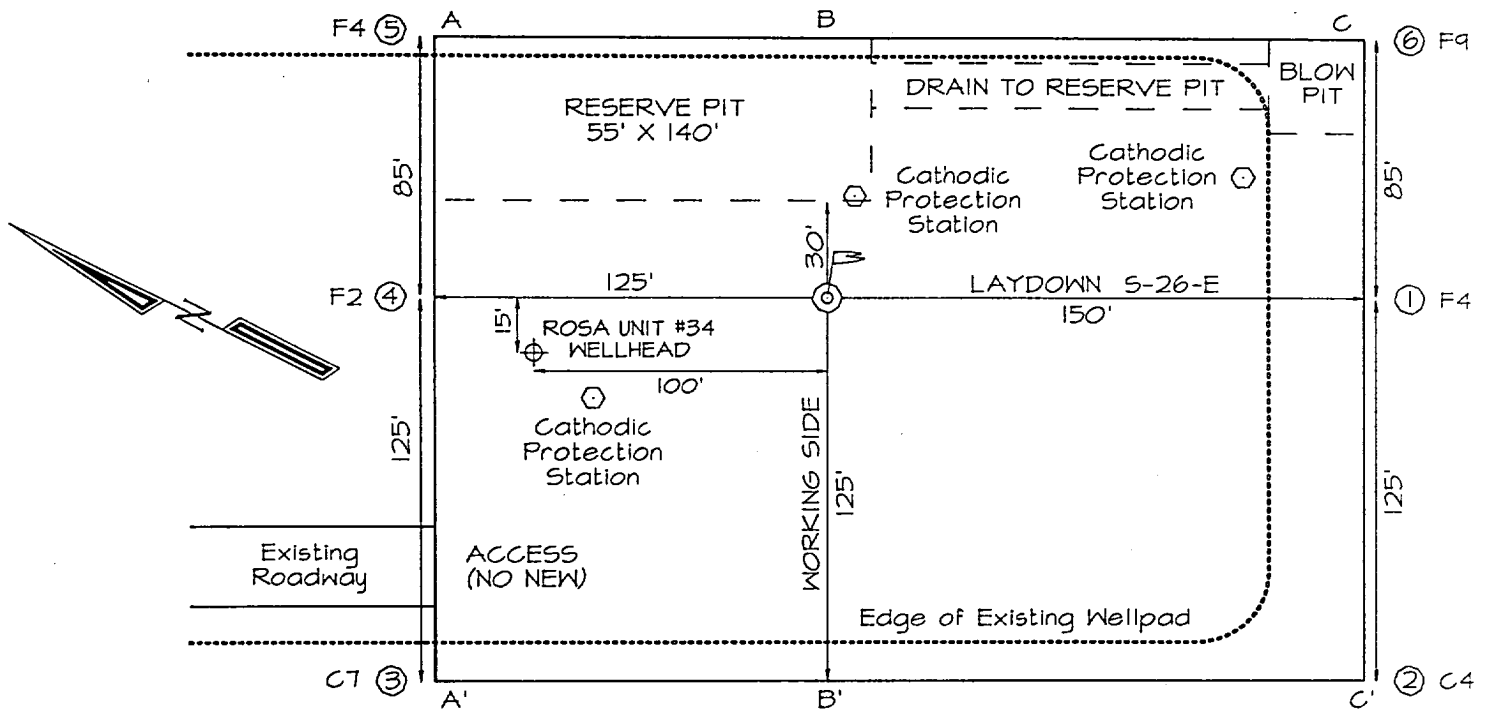
NOVEMBER 2, 1999  
Date of Survey  
Signature and Seal  
NEALE C. EDWARDS  
NEW MEXICO  
6857  
Certificate Number  
6857

**WILLIAMS PRODUCTION COMPANY ROSA UNIT #357**

1045' FNL & 1605' FEL, SECTION 36, T32N, R6W, N.M.P.M.  
RIO ARriba COUNTY, NEW MEXICO

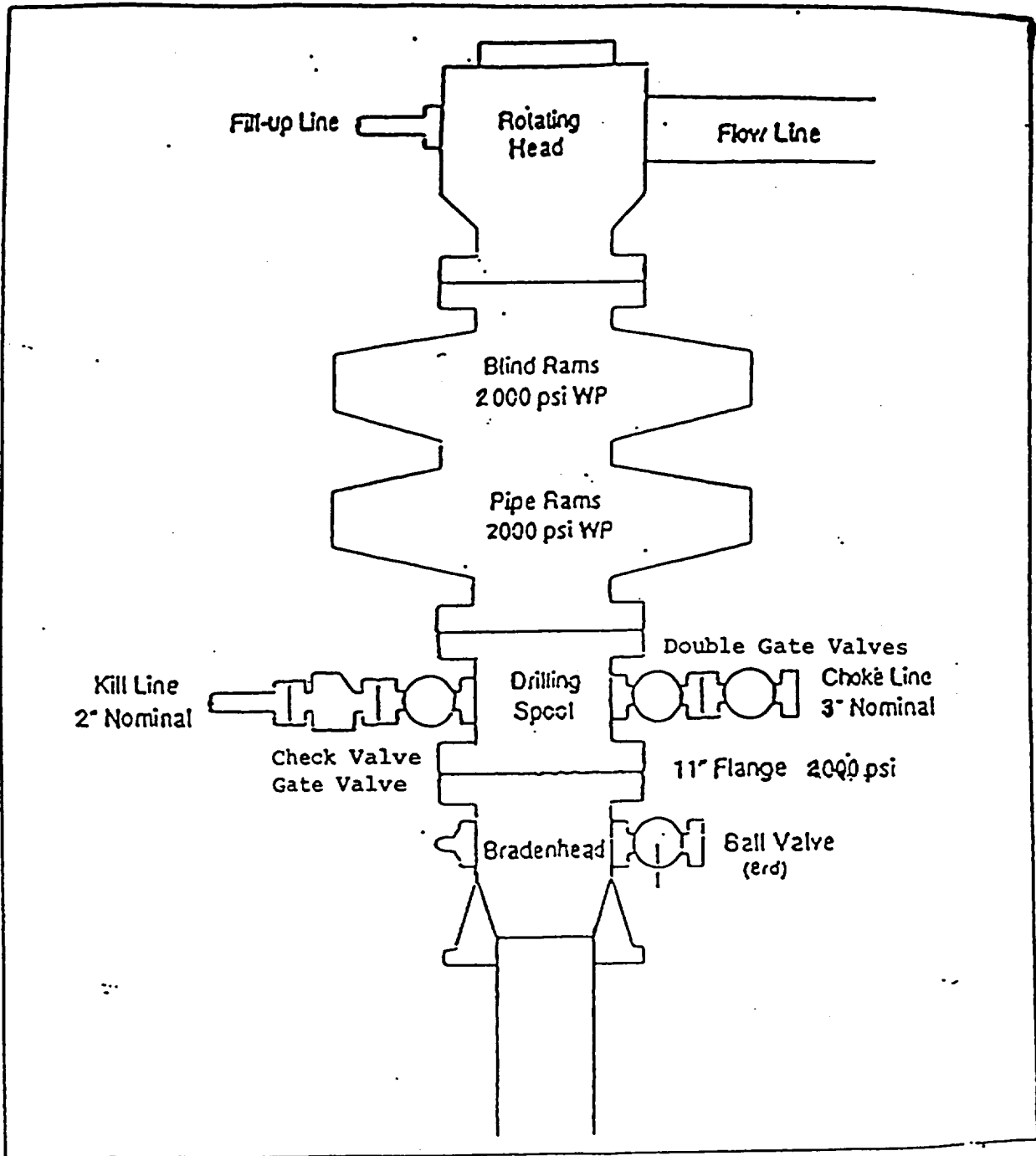


**WILLIAMS PRODUCTION COMPANY ROSA UNIT #357**  
**1045' FNL & 1605' FEL, SECTION 36, T32N, R6W, NMPM**  
**RIO ARriba COUNTY, NEW MEXICO GROUND ELEVATION: 6640'**



# EXHIBIT 1

## BOP STACK ARRANGEMENT



All ram type preventers and related equipment will be hydraulically tested at nipple-up and after any use under pressure to 1500 psi. The blind rams will be hydraulically activated and checked for operational readiness each time pipe is pulled out of the hole. All checks of the BOP stack and equipment will be noted on the daily drilling report. The BOP equipment will include a kelly cock with handle, floor safety valve with change overs for each tool joint in the string, and choke manifold all rated to 2000 psi.

EXHIBIT 2

Choke Manifold & Accumulator Schematic

