

UNITED STATES
DEPARTMENT OF THE INTERIOR
BUREAU OF LAND MANAGEMENT

APPLICATION FOR PERMIT TO DRILL OR DEEPEN

1a. TYPE OF WORK

DRILL ☒DEEPEN ☐

b. TYPE OF WELL

OIL
WELL ☐OAR
WELL ☒

OTHER

SINGLE
ZONE ☒MULTIPLE
ZONE ☐

2. NAME OF OPERATOR

VASTAR RESOURCES, INC.

36619

3. ADDRESS AND TELEPHONE NO.

1816 E. MOJAVE, FARMINGTON NM 87401 (505) 599-4308

4. LOCATION OF WELL (Report location clearly and in accordance with any State requirements.)

At surface

365' FNL, 787' FEL

At proposed prod. zone

1256' FNL, 1312' FEL (MIDPOINT COAL)

14. DISTANCE IN MILES AND DIRECTION FROM NEAREST TOWN OR POST OFFICE*

41 MILES EAST-NORTHEAST OF BLOOMFIELD, NM

15. DISTANCE FROM PROPOSED*

LOCATION TO NEAREST

PROPERTY OR LEASE LINE, FT.

(Also to nearest drlg. unit line, if any)

1306'

18. DISTANCE FROM PROPOSED LOCATION*

TO NEAREST WELL, DRILLING, COMPLETED,
OR APPLIED FOR, ON THIS LEASE, FT.

5700'

16. NO. OF ACRES IN LEASE

824.25

17. NO. OF ACRES ASSIGNED

TO THIS WELL 320

19. PROPOSED DEPTH

3796' TVD, 3968' MD

20. ROTARY OR CABLE TOOLS

ROTARY

21. ELEVATIONS (Show whether DP, BT, GR, etc.)

6970' GL

22. APPROX. DATE WORK WILL START*

July, 2000

23.

PROPOSED CASING AND CEMENTING PROGRAM

SIZE OF HOLE	GRADE SIZE OF CASING	WEIGHT PER FOOT	SETTING DEPTH	QUANTITY OF CEMENT
12-1/4"	8-5/8"	24#	400'	300 sx (354 cf.) Circ. to Surf.
7-7/8"	5-1/2"	15.5#	3968' MD	900 sx (1730 cf.) Circ. to Surf.

This action is subject to technical and
procedural review pursuant to 43 CFR 3165.3
and appeal pursuant to 43 CFR 3165.4.

Directional drilling (see attached directional plan) begins 50' below surface casing at 450' and builds to 21° max then holds before dropping back towards vertical (S shaped) to 10° max through coal to TD.

SHL	365' FNL	787' FEL	0' TVD	0' MD
Top of Coal	1304' FNL	1311' FEL	3691' TVD	3861' MD
Midpoint Coal	1306' FNL	1312' FEL	3704' TVD	3874' MD
Bottom of Coal	1308' FNL	1313' FEL	3716' TVD	3886' MD
BHL at TD	1320' FNL	1320' FEL	3796' TVD	3968' MD

DRILLING OPERATIONS AUTHORIZED ARE
SUBJECT TO COMPLIANCE WITH ATTACHED
"GENERAL REQUIREMENTS"

IN ABOVE SPACE DESCRIBE PROPOSED PROGRAM: If proposal is to deepen, give data on present productive zone and proposed new productive zone. If proposal is to drill or deepen directionally, give pertinent data on subsurface locations and measured and true vertical depths. Give blowout preventer program, if any.

24.

SIGNED

CHARLES W. KNIGHT, JR.

TITLE ENGINEER (505) 599-4308

DATE

6/21/00

(This space for Federal or State office use)

PERMIT NO.

APPROVAL DATE

Application approval does not warrant or certify that the applicant holds legal or equitable title to those rights in the subject lease which would entitle the applicant to conduct operations thereon.
CONDITIONS OF APPROVAL, IF ANY:

APPROVED BY

/s/ Jim Lovato

NMOC

DATE

JUL 11 2000

*See Instructions On Reverse Side

HOLD C104 FOR

Directional Survey

District I
1901 Box 1980, Hobbs, NM 88241-1980
District II
111 South First, Artesia, NM 88210
District III
1000 Rio Huerfano Rd., Aztec, NM 87410
District IV
2040 South Pacheco, Santa Fe, NM 87505

State of New Mexico
Energy, Minerals & Natural Resources Department

OIL CONSERVATION DIVISION
2040 South Pacheco
Santa Fe, NM 87505

Form C-102
Revised October 18, 1994
Instructions on back
Submit to Appropriate District Office
State Lease - 4 Copies
Fee Lease - 3 Copies

☐ AMENDED REPORT

WELL LOCATION AND ACREAGE DEDICATION PLAT

1. API Number 30-039-26483		2. Pool Code 71629		3. Pool Name Basin Fruitland Coal	
4. Property Code 26483		5. Property Name CARRACAS 36A			6. Well Number 1
7. OGRID No. 36619		8. Operator Name VASTAR RESOURCES, INC.			9. Elevation 6970'

10. Surface Location

UL or lot no.	Section	Township	Range	Lot Ida	Feet from the	North/South line	Feet from the	East/West line	County
A	36	32N	5W		365'	NORTH	787'	EAST	RIO ARriba

11. Bottom Hole Location If Different From Surface

UL or lot no.	Section	Township	Range	Lot Ida	Feet from the	North/South line	Feet from the	East/West line	County
A	36	32N	5W		1320'	NORTH	1320'	EAST	RIO ARriba

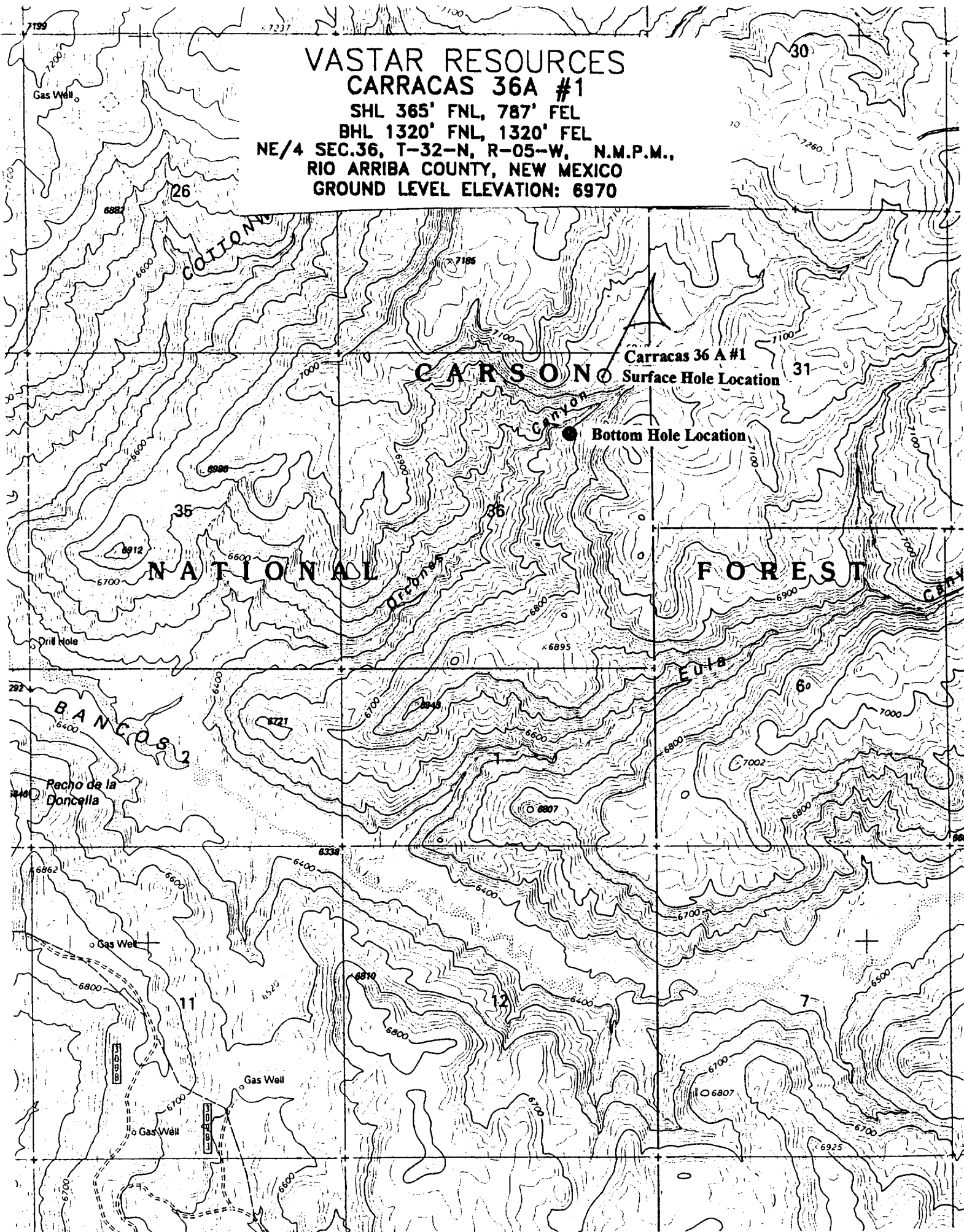
12. Dedicated Acres	13. Joint or Infill	14. Consolidation Code	15. Order No.
320 ac			

NO ALLOWABLE WILL BE ASSIGNED TO THIS COMPLETION UNTIL ALL INTERESTS HAVE BEEN CONSOLIDATED OR A NON-STANDARD UNIT HAS BEEN APPROVED BY THE DIVISION

16		N89°54'W		5280.66'		SHL 365'		787'		17 OPERATOR CERTIFICATION	
						BHL 1320'		NSL		I hereby certify that the information contained herein is true and complete to the best of my knowledge and belief	
5280.00'										Signature Charles W. Knight, Jr.	
										Printed Name Engineer	
										Title June 21, 2000	
										Date	
Section 36										18 SURVEYOR CERTIFICATION	
										I hereby certify that the well location shown on this plat was plotted from field notes of actual surveys made by me or under my supervision, and that the same is true and correct to the best of my belief.	
										06/14/00	
										Date of Survey	
										Signature and Seal of Professional Surveyor:	
										Certificate Number	
West				5280.00'							

NE/4 SEC.36, T-32-N, R-05-W, N.M.P.M.,
RIO ARriba COUNTY, NEW MEXICO
GROUND LEVEL ELEVATION: 6970

GROUND LEVEL ELEVATION: 6970



Vastar Resources, Inc.
Carracas 36 A #1
SHL: 365' FNL, 787' FEL
BHL: 1320' FNL, 1320' FEL
Sec 36, T32N, R5W
Rio Arriba County, New Mexico

Page 1

DRILLING PLAN

Directional drilling (**see attached directional plan**) begins 50' below surface casing at 450' and builds to 21° max then holds before dropping back towards vertical (S shaped) to 10° max through coal to TD.

1. **FORMATION TOPS: The estimated tops of geologic markers as follows:**

Ojo Alamo	3115' TVD
Kirkland	3205' TVD
Fruitland	3534' TVD
Top of Coal	3691' TVD, 3861' MD
TD	3796' TVD, 3968' MD

2. **ANTICIPATED DEPTHS OF OIL, GAS, AND WATER:**

Ojo Alamo	3115' TVD - Water
Fruitland	3534' TVD - Gas

All zones capable of oil, gas, or water production will be protected with 8 5/8" or 5 1/2" casing and cemented to surface.

3. **BLOWOUT PREVENTOR REQUIREMENTS:**

<u>Interval</u>	<u>Pressure Control Equipment</u>
Surface - 400'	No equipment necessary
400' - TD	10" 2000 psi Double Ram preventor, rotating head and choke manifold.

All BOPE will be hydraulically pressure tested when nipped up, after well control use and every thirty days. Pressure tests will be to the lesser of 2000 psi or to 70% of the minimum internal yield pressure of the casing.

Blind rams will be functioned on each trip out of the hole. All BOPE checks will be noted on the daily drilling reports. Additional BOPE equipment includes a kelly cock, FO safety valve and an inside BOP.

SEE ATTACHED BOP DIAGRAM