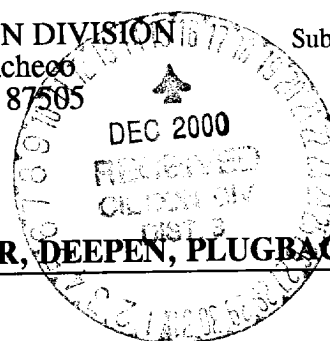


District I
PO Box 1980, Hobbs, NM 88241-1980
District II
811 S. 1st Street, Artesia, NM 88210-2834
District III
1000 Rio Brazos Rd., Aztec, NM 87410
District IV
2040 South Pacheco, Santa Fe, NM 87505

State of New Mexico
Energy, Minerals & Natural Resources Department

OIL CONSERVATION DIVISION
2040 South Pacheco
Santa Fe, NM 87505

Form C-101
Revised October 18, 1994
Instructions on back
Submit to Appropriate District Office
State Lease - 6 Copies
Fee Lease - 5 Copies



☐ AMENDED REPORT

APPLICATION FOR PERMIT TO DRILL, RE-ENTER, DEEPEN, PLUGBACK, OR ADD A ZONE

¹ Operator name and Address ENERGEN RESOURCES CORPORATION 2198 Bloomfield Highway Farmington, NM 87401		² OGRID Number 162928
⁴ Property Code 21996		³ API Number 30-0 39-26616
⁵ Property Name San Juan 32-5 Unit		⁶ Well No. 10B

⁷ Surface Location

UL or lot no.	Section	Township	Range	Lot. Idn	Feet from the	North/South Line	Feet from the	East/West line	County
L	32	32N	5W		2255	S	950	W	Rio Arriba

⁸ Proposed Bottom Hole Location If Different From Surface

UL or lot no.	Section	Township	Range	Lot. Idn	Feet from the	North/South Line	Feet from the	East/West line	County

⁹ Proposed Pool 1 Blanco Mesaverde	¹⁰ Proposed Pool 2
--	-------------------------------

¹¹ Work Type Code Drill	¹² Well Type Code Gas Well	¹³ Cable/Rotary Rotary	¹⁴ Lease Type Code State	¹⁵ Ground Level Elevation 6612' GL
¹⁶ Multiple No	¹⁷ Proposed Depth 6444'	¹⁸ Formation Mesaverde	¹⁹ Contractor	²⁰ Spud Date July 1, 2001

²¹ Proposed Casing and Cement Program

Hole Size	Casing Size	Casing weight/foot	Setting Depth	Sacks of Cement	Estimated TOC
12 1/4	9 5/8	36#	200'	130 cu. ft.	Circ.
8 3/4	7	20#	3969'	895 cu. ft.	Circ.
6 1/4	4 1/2	10.5#	3819' - 6444'	404 cu. ft.	Circ. Liner

²² Describe the proposed program. If this application is to DEEPEN or PLUG BACK give the data on the present productive zone and proposed new productive zone. Describe the blowout prevention program, if any. Use additional sheets if necessary

An 11" 2000# minimum double gate BOP stack will be used with a 2" 2000# choke manifold.
The Mesaverde will be selectively perforated and sand water fractured.
This gas is dedicated.

²³ I hereby certify that the information given above is true and complete to the best of my knowledge and belief.

Signature:

Don Graham

Printed name: Don Graham

Title: Drilling & Completion Foreman

OIL CONSERVATION DIVISION

Approved by:

Title:

Approval Date:

DEC 15 2000

Expiration Date:

DEC 15 2001

District II
PO Drawer DD, Artesia, NM 88211-0719

OIL CONSERVATION DIVISION
PO Box 2088
Santa Fe, NM 87504-2088

Instructions on back
Submit to Appropriate District Office
State Lease - 4 Copies
Fee Lease - 3 Copies

District III
1000 Rio Brazos Rd., Aztec, NM 87410

District IV
PO Box 2088, Santa Fe, NM 87504-2088

☐ AMENDED REPORT

WELL LOCATION AND ACREAGE DEDICATION PLAT

*API Number 30-039-26616		*Pool Code 72319 —	*Pool Name Blanco Mesaverde —
*Property Code 21996	*Property Name SAN JUAN 32-5 UNIT		*Well Number 10B
*CGRID No. 162928	*Operator Name ENERGEN RESOURCES CORPORATION		*Elevation 6612' —

10 Surface Location

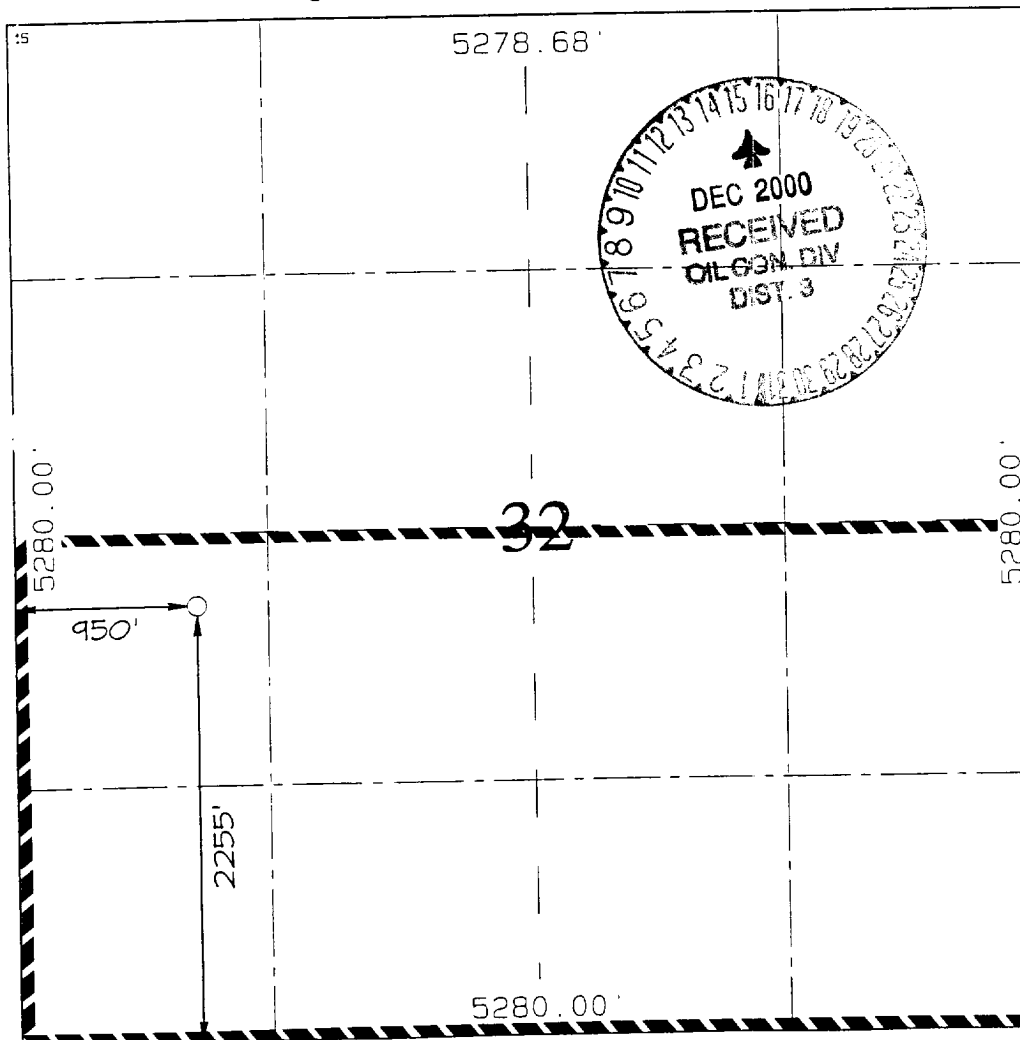
UL or lot no.	Section	Township	Range	Lot Idn	Feet from the	North/South line	Feet from the	East/West line	County
L	32	32N	5W		2255	SOUTH	950	WEST	RIO ARriba

11 Bottom Hole Location If Different From Surface

UL or lot no.	Section	Township	Range	Lot Idn	Feet from the	North/South line	Feet from the	East/West line	County

*12 Dedicated Acres 320 <i>3/2</i>	*13 Joint or Infill	*14 Consolidation Code	*15 Order No.
---------------------------------------	---------------------	------------------------	---------------

NO ALLOWABLE WILL BE ASSIGNED TO THIS COMPLETION UNTIL ALL INTERESTS HAVE BEEN CONSOLIDATED
OR A NON-STANDARD UNIT HAS BEEN APPROVED BY THE DIVISION



17 OPERATOR CERTIFICATION

I hereby certify that the information contained herein is true and complete to the best of my knowledge and belief.

[Signature]
Signature
Gary Brink
Printed Name
Production Superintendent
Title
12/14/00
Date

18 SURVEYOR CERTIFICATION

I hereby certify that the well location shown on this plat was plotted from field notes of actual surveys made by me or under my supervision, and that the same is true and correct to the best of my belief.

SEPTEMBER 8, 2000
Date of Survey
[Signature]
Signature and Seal
NEALE C. EDWARDS
NEW MEXICO
6857
Certificate 6857