

District I  
PO Box 1980, Hobbs, NM 88241-1980  
District II  
811 South First, Artesia, NM 88210  
District III  
1000 Rio Brazos Rd., Aztec, NM 87410  
District IV  
2040 South Pacheco, Santa Fe, NM 87505

State of New Mexico  
Energy, Minerals & Natural Resources Department

OIL CONSERVATION DIVISION  
2040 South Pacheco  
Santa Fe, NM 87505

Form C-101  
Revised October 18, 1994  
Instructions on back  
Submit to Appropriate District Office  
State Lease - 6 Copies  
Fee Lease - 5 Copies

AMENDED REPORT

APPLICATION FOR PERMIT TO DRILL, RE-ENTER, DEEPEN, PLUGBACK, OR ADD A ZONE

|   |  |  |
|---|--|--|
| <sup>1</sup> Operator Name and Address.<br>Williams Production Company<br>P.O. Box 3102, MS 37-2<br>Tulsa, OK 74101 |  | <sup>2</sup> OGRID Number<br>120782    |
| <sup>4</sup> Property Code<br>17033   |  | <sup>3</sup> API Number<br>30039-26631 |
| <sup>5</sup> Property Name<br>Rosa Unit   |  | <sup>6</sup> Well No.<br>152B          |

<sup>7</sup> Surface Location

| UL or lot no. | Section | Township | Range | Lot Idn | Feet from the | North/South line | Feet from the | East/West line | County     |
|---------------|---------|----------|-------|---------|---------------|------------------|---------------|----------------|------------|
| C             | 36      | 32N      | 6W    |         | 885'          | North            | 2490'         | West           | Rio Arriba |

<sup>8</sup> Proposed Bottom Hole Location If Different From Surface

| UL or lot no.                                     | Section | Township | Range | Lot Idn | Feet from the                 | North/South line | Feet from the | East/West line | County |
|---|---------|----------|-------|---------|-------------------------------|------------------|---------------|----------------|--------|
|   |         |          |       |         |                               |                  |               |                |        |
| <sup>9</sup> Proposed Pool<br>Blanco - Mesa Verde |         |          |       |         | <sup>10</sup> Proposed Pool 2 |                  |               |                |        |

|                                   |  |  |  |  |
|-----------------------------------|--|--|--|--|
| <sup>11</sup> Work Type Code<br>N | <sup>12</sup> Well Type Code<br>G        | <sup>13</sup> Cable/Rotary<br>Rotary           | <sup>14</sup> Lease Type Code<br>S             | <sup>15</sup> Ground Level Elevation<br>6658' GR |
| <sup>16</sup> Multiple<br>No      | <sup>17</sup> Proposed Depth<br>6375' KB | <sup>18</sup> Formation<br>Blanco - Mesa Verde | <sup>19</sup> Contractor<br>Aztec Well Service | <sup>20</sup> Spud Date<br>April 1, 2001         |

<sup>21</sup> Proposed Casing and Cement Program

| Hole Size | Casing Size | Casing weight/foot | Setting Depth    | Sacks of Cement   | Estimated TOC |
|-----------|-------------|--------------------|------------------|-------------------|---------------|
| 12-1/4"   | 9-5/8"      | 36# K-55           | 250' KB          | 130 sx (181 cuft) | Surface       |
| 8-3/4"    | 7"          | 20# K-55           | 3900' KB         | 630 sx (1170cuft) | Surface       |
| 6-1/4"    | 4-1/2"      | 10.5# K-55         | 3800' - 6375' KB | 275 sx (396 cuft) | Top of Liner  |
|           |             |                    |                  |                   |               |
|           |             |                    |                  |                   |               |

<sup>22</sup> Describe the proposed program. If this application is to DEEPEN or PLUG BACK give the data on the present productive zone and proposed new productive zone. Describe the blowout prevention program, if any. Use additional sheets if necessary.

Williams Exploration & Production proposes to drill a vertical well with an 12-1/4" hole with water & benex to approx. 250' KB and set 9-5/8" 36# K55 surface casing, cement to surface with 130 sx of Class Type III, 2% CaCl2 (181 cu ft), then drill 8-3/4" hole to 3900' KB, set 7" K-55 casing. Cement Lead with 455 sx (931 cu ft) of Type III 65/35 Poz with 8% gel + 1% CaCl2; Cement Tail with 175 sx (239 cuft) of class Type III + 1% CaCl2. Drill 6-1/4" hole to 6375'KB, set 4-1/2" K-55 casing, set production liner, cement Lead with 80 sx (116 Cuft) of Class H + 50/50 poz, cement Tail with 195 sx (280 cu ft) of Class-H 50/50 poz + 4% gel +0.4% FL-5. Run cased hole log (TMDL). While drill pipe in use run not less than one BOP test per day. Set 9-5/8" 36# K-55 production casing from 250'KB to surface, set 7", 20# K-55 casing from 250'KB to 3900'KB, and set 4-1/2" 10.5# K-55 casing from 3800'KB to 6375'KB. The 125% excess should circulate cement to surface. WOC 12 hours. Run cement bond log across all intervals to be perforated & find Top of Cement behind all casing strings. Pressure test 7" & 4-1/2" casing to 3300# for 15 minutes. Mesa Verde: run 2-3/8", 4.7#, J-55 EUE tubing with a SN (1.91" ID) on top of bottom joint. Land tubing approximately 25' above bottom Point Lookout perforation. Will test Mesa Verde through perforated casing. Will fracture stimulate and put on for production test. Surface ownership is State of NM. Surface State procedures. Formation tops: Ojo Alamo- 2675', Kirtland-2795', Fruitland-3205', Pictured Cliffs 3425', Lewis 3775', Cliff House 5685', Menefee 5730', Point Lookout 5925', Mancos 6260', TD 6375', all KB.

<sup>23</sup> I hereby certify that the information given above is true and complete to the best of my knowledge and belief.

Signature: *Steve Nelson*  
Printed name: Steve Nelson

Title: Agent, Nelson Consulting, Inc.

Date: January 8, 2001

Phone: 505-327-6331

OIL CONSERVATION DIVISION

Approved by: *[Signature]*  
Title: DEPUTY OIL & GAS INSPECTOR, DIST. #3

Approval Date: JAN 10 2001

Expiration Date: JAN 10 2002

Conditions of Approval:  
Attached ☐

District I  
PO Box 1980, Hobbs, NM 88241-1980

District II  
PO Drawer DD, Artesia, NM 88211-0719

District III  
1000 Rio Brazos Rd., Aztec, NM 87410

District IV  
PO Box 2088, Santa Fe, NM 87504-2088

State of New Mexico  
Energy, Minerals & Natural Resources Department

OIL CONSERVATION DIVISION  
PO Box 2088  
Santa Fe, NM 87504-2088

Form C-10;  
Revised February 21, 1997  
Instructions on back  
Submit to Appropriate District Office:  
State Lease - 4 Copies  
Fee Lease - 3 Copies

☐ AMENDED REPORT

WELL LOCATION AND ACREAGE DEDICATION PLAT

|                            |   |                       |                                  |
|----------------------------|---|-----------------------|----------------------------------|
| *API Number<br>30039-26631 |   | *Pool Code<br>72319 - | *Pool Name<br>Blanco Mesaverde - |
| *Property Code<br>17033    | *Property Name<br>ROSA UNIT                   |                       | *Well Number<br>152B             |
| *GRID No.<br>120782        | *Operator Name<br>WILLIAMS PRODUCTION COMPANY |                       | *Elevation<br>6658' --           |

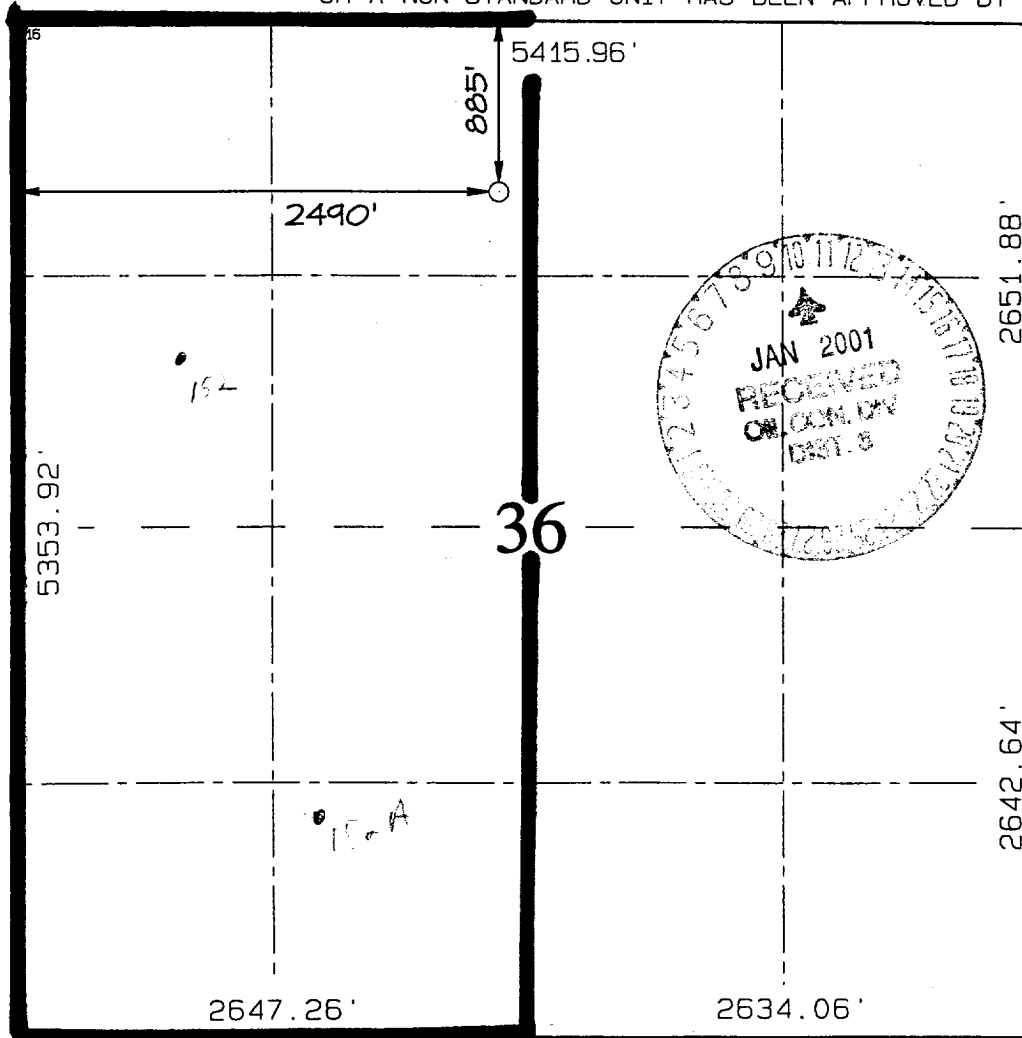
<sup>10</sup> Surface Location

|                    |               |                 |             |         |                      |                           |                       |                        |                      |
|--------------------|---------------|-----------------|-------------|---------|----------------------|---------------------------|-----------------------|------------------------|----------------------|
| UL or lot no.<br>C | Section<br>36 | Township<br>32N | Range<br>6W | Lot Idn | Feet from the<br>885 | North/South line<br>NORTH | Feet from the<br>2490 | East/West line<br>WEST | County<br>RIO ARriba |
|--------------------|---------------|-----------------|-------------|---------|----------------------|---------------------------|-----------------------|------------------------|----------------------|

<sup>11</sup> Bottom Hole Location If Different From Surface

|  |         |                                    |                                       |         |                         |                  |               |                |        |
|--|---------|------------------------------------|---------------------------------------|---------|-------------------------|------------------|---------------|----------------|--------|
| UL or lot no.                              | Section | Township                           | Range                                 | Lot Idn | Feet from the           | North/South line | Feet from the | East/West line | County |
| <sup>12</sup> Dedicated Acres<br>320 - W/2 |         | <sup>13</sup> Joint or Infill<br>I | <sup>14</sup> Consolidation Code<br>U |         | <sup>15</sup> Order No. |                  |               |                |        |

NO ALLOWABLE WILL BE ASSIGNED TO THIS COMPLETION UNTIL ALL INTERESTS HAVE BEEN CONSOLIDATED OR A NON-STANDARD UNIT HAS BEEN APPROVED BY THE DIVISION



<sup>17</sup> OPERATOR CERTIFICATION  
I hereby certify that the information contained herein is true and complete to the best of my knowledge and belief

*Steve Nelson*  
Signature

Steve Nelson  
Printed Name  
Agent, Nelson Consulting  
Title

January 8, 2001  
Date

<sup>18</sup> SURVEYOR CERTIFICATION

I hereby certify that the well location shown on this plat was plotted from field notes of actual surveys made by me or under my supervision, and that the same is true and correct to the best of my belief.

DECEMBER 11, 2000

Date of Survey

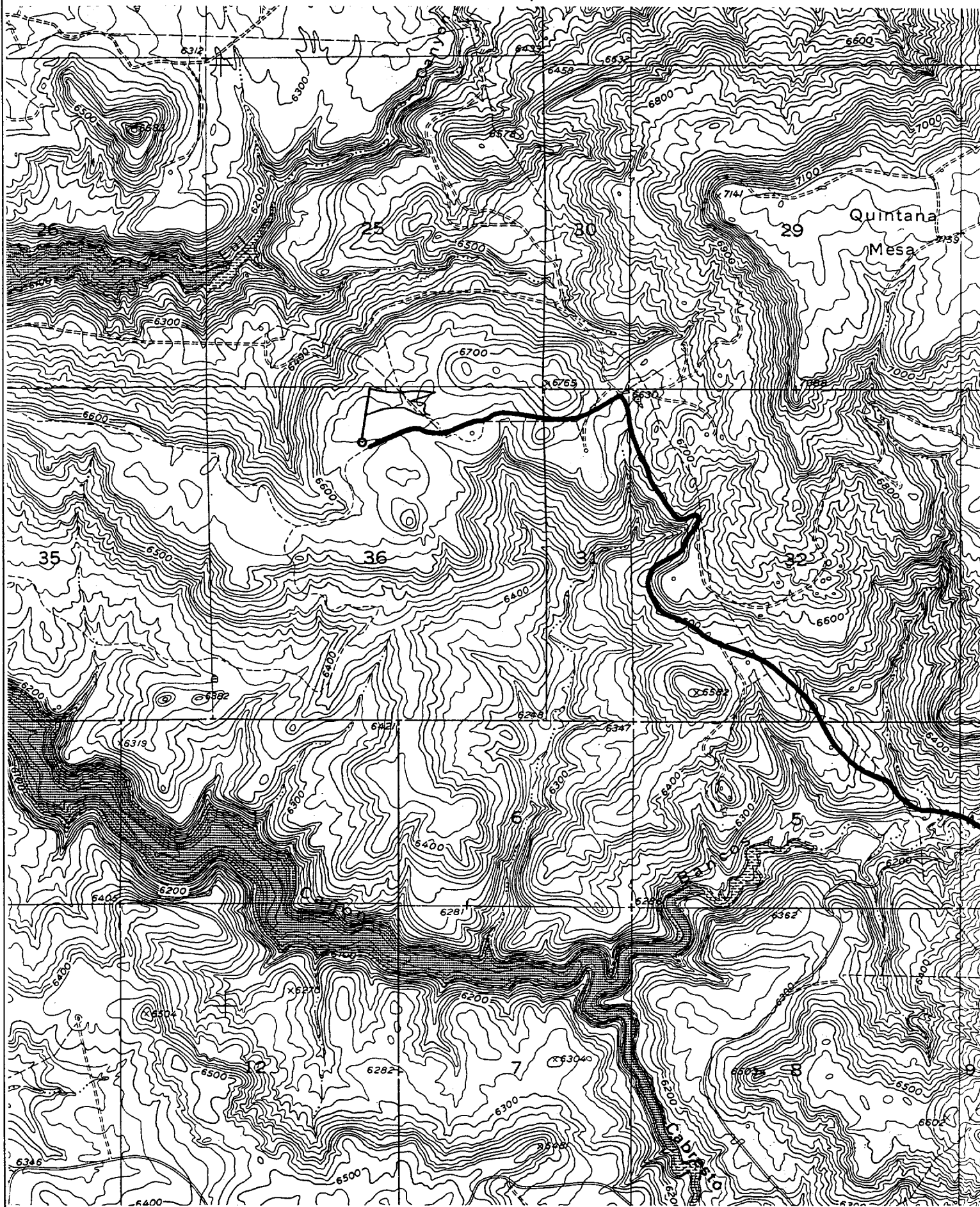
Signature and Seal

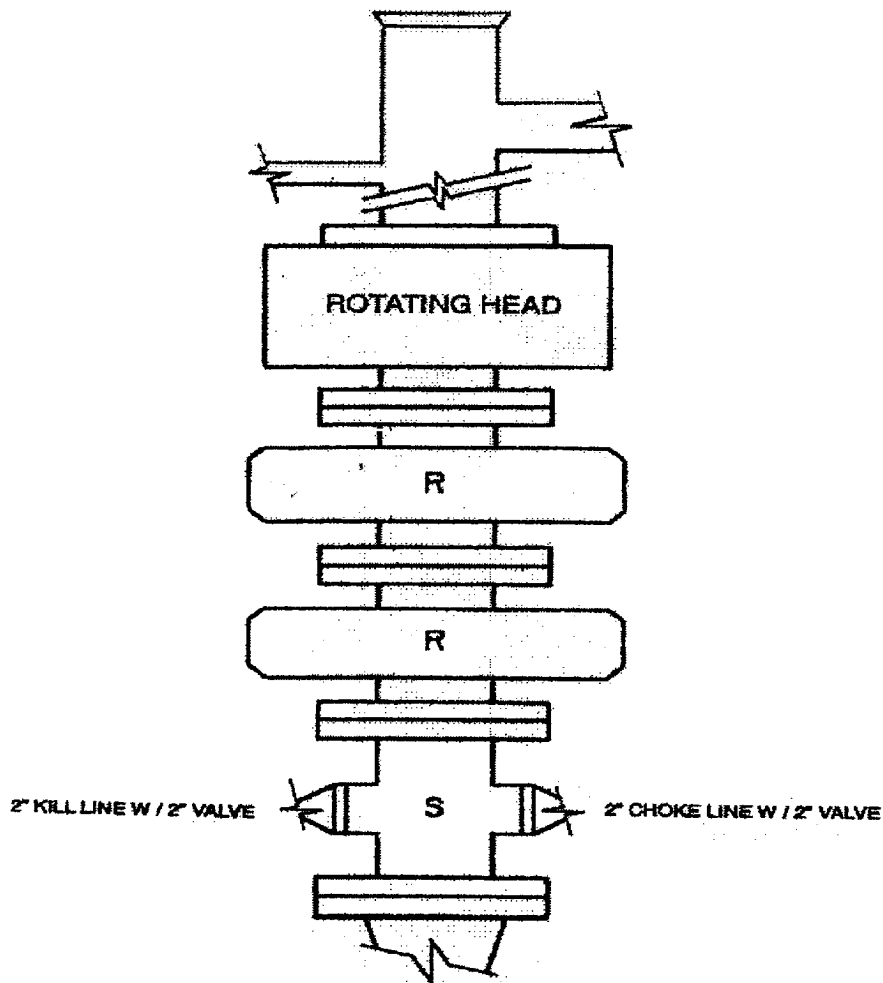


Certificate Number 6857

WILLIAMS PRODUCTION COMPANY ROSA UNIT #152B

885' FNL & 2490' FWL, SECTION 36, T32N, R6W, N.M.P.M.  
RIO ARriba COUNTY, NEW MEXICO





**2M – BOP ARRANGEMENT**

**2M SYSTEM:**

- Annular preventer or double ram or two rams with one being blind and one being a pipe ram
- Kill line (2 inch minimum)
- 1 kill line valve (2 inch minimum)
- 1 choke line valve
- 2 chokes (refer to diagram)
- Upper kelly cock valve with handle available
- Safety valve and subs to fit all drill strings in use
- Pressure gauge on choke manifold
- 2 inch minimum choke line
- Fill-up line above uppermost preventer

Anticipated reservoir pressure is expected to be less than 1300 psi on all encountered zones.

All ram type preventers and related equipment will be hydraulically tested at nipple-up and after any use under pressure to 1500 psi. The pipe and blind rams will be activated and checked for operational readiness each trip. All checks of the BOP stack and equipment will be noted on the daily drilling report. The BOP equipment will include a kelly cock with handle, floor safety valve with changeovers for each tool joint in the string and choke manifold all rated to 2000 psi