

UNITED STATES
DEPARTMENT OF THE INTERIOR
BUREAU OF LAND MANAGEMENT

SUBMIT IN TRIPLICATE*
(Other instructions on
reverse side)

FORM APPROVED
OMB NO. 1004-0136
Expires: February 28, 1995

APPLICATION FOR PERMIT TO DRILL OR DEEPEN

1a. TYPE OF WORK

DRILL ☒

DEEPEN ☐

b. TYPE OF WELL

OIL ☐

GAS ☒

WELL ☐ OTHER

SINGLE ☒

MULTIPLE ☐

2. NAME OF OPERATOR

ENERGEN RESOURCES CORPORATION

3. ADDRESS AND TELEPHONE NO.

2198 Bloomfield Highway; Farmington, NM 87401

4. LOCATION OF WELL (Report location clearly and in accordance with any State requirements. *)

At surface

825' FSL, 345' FEL

At proposed prod. zone

All at secs. 30, 31

lot 4 R

14. DISTANCE IN MILES AND DIRECTION FROM NEAREST TOWN OR POST OFFICE*

Eight (8) miles SE of Arboles, Colorado

15. DISTANCE FROM PROPOSED*

LOCATION TO NEAREST

PROPERTY OR LEASE LINE, FT.

(Also to nearest drlg. unit line, if any) 345'

16. NO. OF ACRES IN LEASE

174.41

17. NO. OF ACRES ASSIGNED
TO THIS WELL

345.59

18. DISTANCE FROM PROPOSED LOCATION*

TO NEAREST WELL, DRILLING, COMPLETED,

OR APPLIED FOR, ON THIS LEASE, FT. 1500'

19. PROPOSED DEPTH

6354' —

20. ROTARY OR CABLE TOOLS

Rotary

21. ELEVATIONS (Show whether DF, RT, GR, etc.)

6552' GR —

22. APPROX. DATE WORK WILL START*

23. PROPOSED CASING AND CEMENTING PROGRAM

SIZE OF HOLE	GRADE, SIZE OF CASING	WEIGHT PER FOOT	SETTING DEPTH	QUANTITY OF CEMENT
12 1/4	9 5/8	36#	200'	130 cu. ft., circ. to surface —
8 3/4	7	20#	3824'	863 cu. ft., circ. to surface —
6 1/4	4 1/2	10.5#	3674'-6354'	413 cu. ft., circ. liner —

Selectively perforate and sand water fracture the Mesaverde.

This gas is dedicated.

A Williams Field Service Pipeline ROW Plat is attached.

THIS IS AN EXPEDITED APD.

Proposal is subject to technical and
approval and permit pursuant to 43 CFR 3105.2
and is exempt pursuant to 43 CFR 3105.4.

IN ABOVE SPACE DESCRIBE PROPOSED PROGRAM: If proposal is to deepen, give data on present productive zone and proposed new productive zone. If proposal is to drill or deepen directionally, give pertinent data on subsurface locations and measured and true vertical depths. Give blowout preventer program, if any.

24.

SIGNED

[Signature]

TITLE

Drilling & Completion Foreman

DATE

1-9-01

(This space for Federal or State office use)

PERMIT NO.

APPROVAL DATE

Application approval does not warrant or certify that the applicant holds legal or equitable title to those rights in the subject lease which would entitle the applicant to conduct operations thereon.

CONDITIONS OF APPROVAL, IF ANY:

APPROVED BY

/s/ Joel Farrell

TITLE

DATE

*See Instructions On Reverse Side

Title 18 U.S.C. Section 1001, makes it a crime for any person knowingly and willfully to make to any department or agency of the United States any false, fictitious or fraudulent statements or representations as to any matter within its jurisdiction.

NMOCB

District II
PO Drawer 00, Artesia, NM 88211-0719

OIL CONSERVATION DIVISION
PO Box 2088
Santa Fe, NM 87504-2088

Instructions on back
Submit to Appropriate District Office
State Lease - 4 Copies
Fee Lease - 3 Copies

District III
1000 Rio Brazos Rd., Aztec, NM 87410

District IV
PO Box 2088, Santa Fe, NM 87504-2088

☐ AMENDED REPORT

WELL LOCATION AND ACREAGE DEDICATION PLAT

*API Number 30-039-26636		*Pool Code 72319	*Pool Name Blanco Mesaverde
*Property Code 21996	*Property Name SAN JUAN 32-5 UNIT		*Well Number 9C
*OGRID No. 162928	*Operator Name ENERGEN RESOURCES CORPORATION		*Elevation 6552

10 Surface Location

UL or lot no.	Section	Township	Range	Lot Idn	Feet from the	North/South line	Feet from the	East/West line	County
P	30	32N	5W		825	SOUTH	345	EAST	RIO ARriba

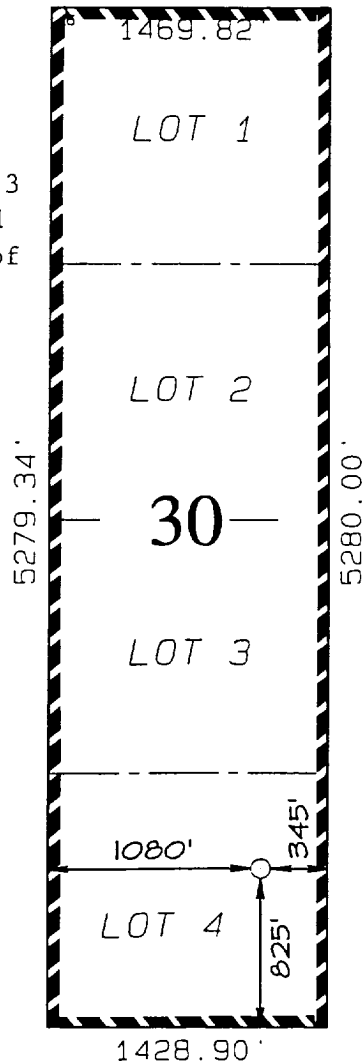
11 Bottom Hole Location If Different From Surface

UL or lot no.	Section	Township	Range	Lot Idn	Feet from the	North/South line	Feet from the	East/West line	County

*Dedicated Acres 345.59	*Joint or Infill	*Consolidation Code	*Order No. NBL 4031(CNSD) to # 9M
-----------------------------------	------------------	---------------------	---

NO ALLOWABLE WILL BE ASSIGNED TO THIS COMPLETION UNTIL ALL INTERESTS HAVE BEEN CONSOLIDATED OR A NON-STANDARD UNIT HAS BEEN APPROVED BY THE DIVISION

Includes Lots 1, 2, 3
and 4 of Sec. 31 and
Lots 1, 2, 3 and 4 of
Sec. 30



17 OPERATOR CERTIFICATION

I hereby certify that the information contained herein is true and complete to the best of my knowledge and belief.

[Signature]
Signature
Gary Brink
Printed Name
Production Superintendant
Title
1/9/01
Date

18 SURVEYOR CERTIFICATION

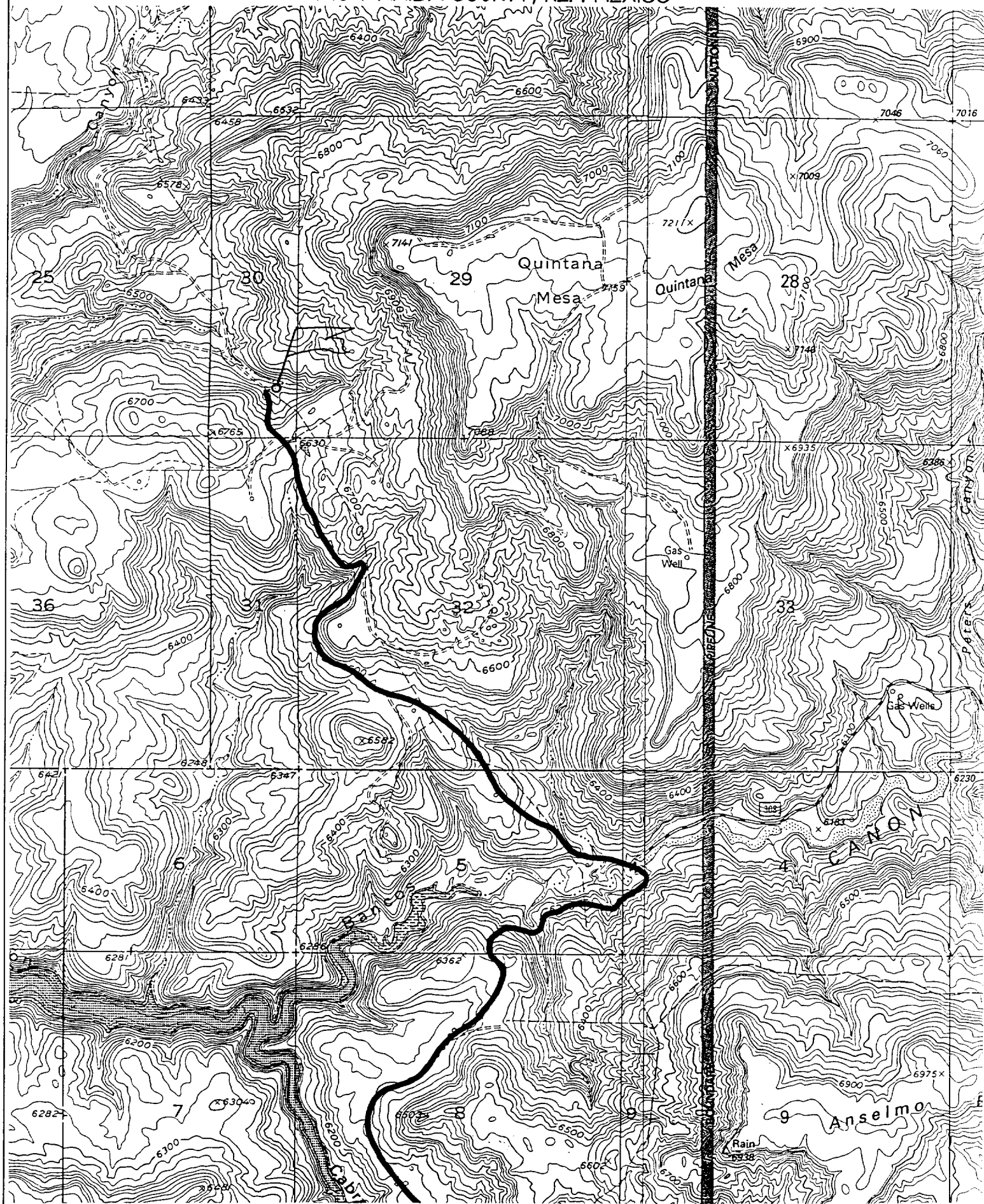
I hereby certify that the well location shown on this plat was plotted from field notes of actual surveys made by me or under my supervision, and that the same is true and correct to the best of my belief.

OCTOBER 23, 2000
Date of Survey
Signature and Seal of **NEALE C. EDWARDS**
NEW MEXICO
REGISTERED PROFESSIONAL SURVEYOR
6857
Certificate Number **6857**

ENERGEN RESOURCES CORPORATION SAN JUAN 32-5 UNIT #9C

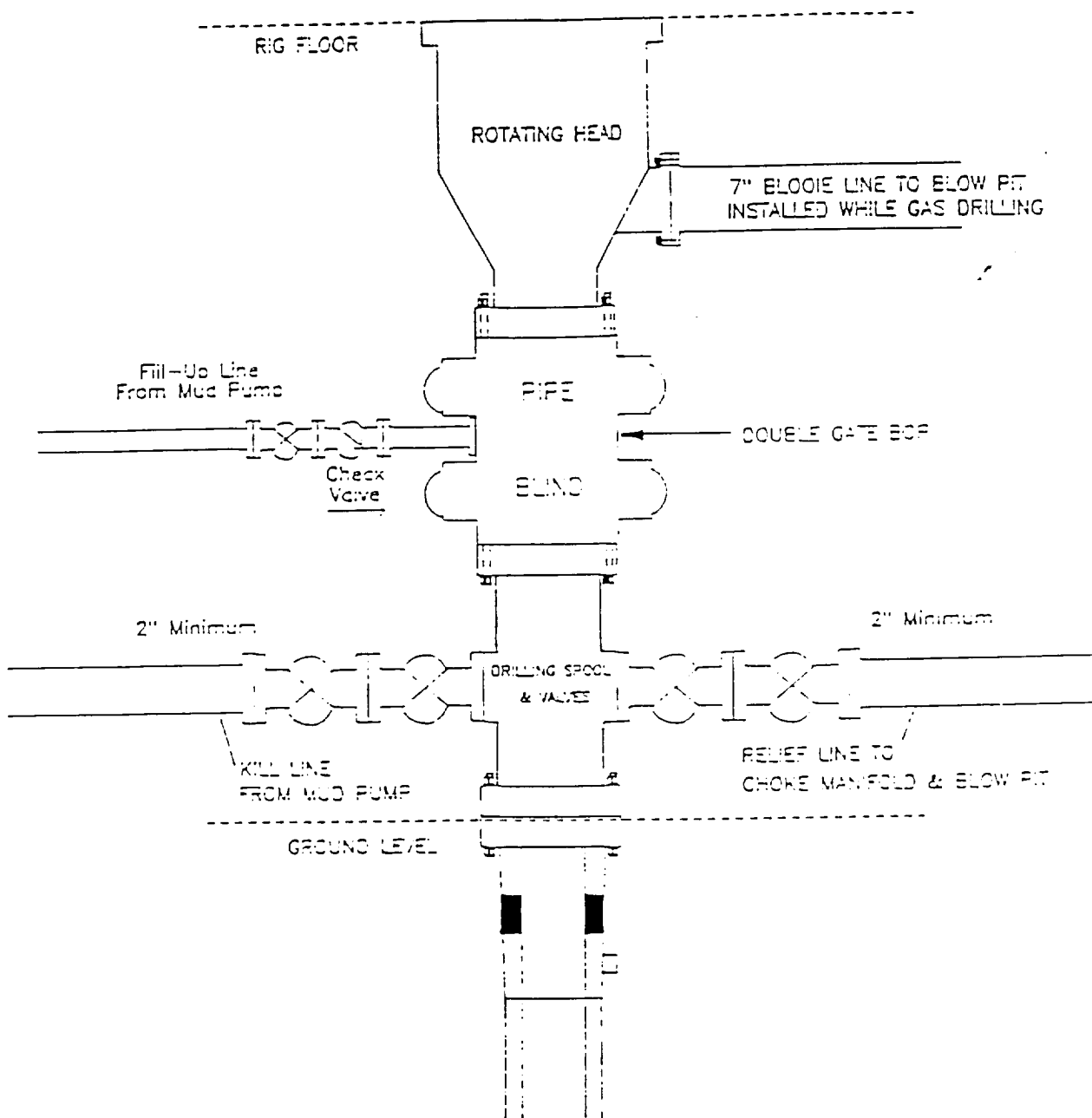
825' FSL & 345' FEL, SECTION 30, T32N, R5W, N.M.P.M.

RIO ARriba COUNTY, NEW MEXICO



ENERGEN RESOURCES CORPORATION

Mesa Verde / Dakota Well BOP Configuration



Minimum BOP installation for a Mesa Verde well from Surface to Total Depth. 11" Bore, 2000psi minimum working pressure double gate BOP to be equipped with blind and pipe rams. A Schaffer Type 50 or equivalent rotating head to be installed on the top of the BOP. All equipment is 2000psi working pressure or greater.

Figure #1