

UNITED STATES
DEPARTMENT OF THE INTERIOR
BUREAU OF LAND MANAGEMENT

SUBMIT IN TRIPLICATE*
(Other instructions on
reverse side)

FORM APPROVED
OMB NO. 1004-0136
Expires: February 28, 1995

APPLICATION FOR PERMIT TO DRILL OR DEEPEN

1a. TYPE OF WORK

DRILL ☒

DEEPEN ☐

b. TYPE OF WELL

OIL ☐
WELL

GAS ☒
WELL

OTHER

SINGLE ☒
ZONE

MULTIPLE ☐
ZONE

2. NAME OF OPERATOR

ENERGEN RESOURCES CORPORATION

3. ADDRESS AND TELEPHONE NO.

2198 Bloomfield Highway; Farmington, NM 87401

4. LOCATION OF WELL (Report location clearly and in accordance with any State requirements)
At surface

1005' FNL, 680' FEL
At proposed prod. zone

14. DISTANCE IN MILES AND DIRECTION FROM NEAREST TOWN OR POST OFFICE*

17 miles North of Gobernador, New Mexico

15. DISTANCE FROM PROPOSED*
LOCATION TO NEAREST
PROPERTY OR LEASE LINE, FT.
(Also to nearest drlg. unit line, if any)

680'

16. NO. OF ACRES IN LEASE

117.17

17. NO. OF ACRES ASSIGNED
TO THIS WELL

345.59

18. DISTANCE FROM PROPOSED LOCATION*
TO NEAREST WELL, DRILLING, COMPLETED,
OR APPLIED FOR, ON THIS LEASE, FT.

320'

19. PROPOSED DEPTH

3454'

20. ROTARY OR CABLE TOOLS

Rotary

21. ELEVATIONS (Show whether DF, RT, GR, etc.)

6654' GL

22. APPROX. DATE WORK WILL START*

23. PROPOSED CASING AND CEMENTING PROGRAM

SIZE OF HOLE	GRADE SIZE OF CASING	WEIGHT PER FOOT	SETTING DEPTH	QUANTITY OF CEMENT
12-1/4"	9-5/8"	36#	200'	130 cu. ft., Circ to surface
8-3/4"	7"	20#	3329'	751 cu. ft., Circ to surface
6-1/4"			3454'	

DRILLING OPERATIONS AUTHORIZED ARE
SUBJECT TO COMPLIANCE WITH ATTACHED
"GENERAL REQUIREMENTS"

Selective perforate and sand water fracture the Fruitland Coal.
This gas is dedicated.
A Williams Field Service Pipeline ROW Plat is attached.

THIS IS AN EXPEDITED APD.

THIS IS AN EXPEDITED APD.
PROPOSED DEPTH 3454'
AND APPROVED DEPTH 3454'.

IN ABOVE SPACE DESCRIBE PROPOSED PROGRAM: If proposal is to deepen, give data on present productive zone and proposed new productive zone. If proposal is to drill or deepen directionally, give pertinent data on subsurface locations and measured and true vertical depths. Give blowout preventer program, if any.

24.

SIGNED

Don Graham

TITLE

Drilling & Completion Foreman

DATE

1/9/01

(This space for Federal or State office use)

PERMIT NO.

APPROVAL DATE

6/29/01

Application approval does not warrant or certify that the applicant holds legal or equitable title to those rights in the subject lease which would entitle the applicant to conduct operations thereon.

CONDITIONS OF APPROVAL, IF ANY:

/s/ Lee Otter

JUN 29

APPROVED BY

TITLE

DATE

*See Instructions On Reverse Side

Title 18 U.S.C. Section 1001, makes it a crime for any person knowingly and willfully to make to any department or agency of the United States any false, fictitious or fraudulent statements or representations as to any matter within its jurisdiction.

HOLD C104 FOR NSP

District II
PO Drawer DD, Artesia, NM 88211-0719

OIL CONSERVATION DIVISION
PO Box 2088
Santa Fe, NM 87504-2088

Instructions on back
Submit to Appropriate District Office
State Lease - 4 Copies
Fee Lease - 3 Copies

District III
1000 Rio Brazos Rd., Aztec, NM 87410

District IV
PO Box 2088, Santa Fe, NM 87504-2088

☐ AMENDED REPORT

WELL LOCATION AND ACREAGE DEDICATION PLAT

*API Number 30-039-26637		*Pool Code 71629	*Pool Name Basin Fruitland Coal
*Property Code 21996	*Property Name SAN JUAN 32-5 UNIT		*Well Number 111
*OGRID No. 162928	*Operator Name ENERGEN RESOURCES CORPORATION		*Elevation 6654

¹⁰ Surface Location

UL or lot no.	Section	Township	Range	Lot Idn	Feet from the	North/South line	Feet from the	East/West line	County
A	31	32N	5W		1005	NORTH	680	EAST	RIO ARriba

¹¹ Bottom Hole Location If Different From Surface

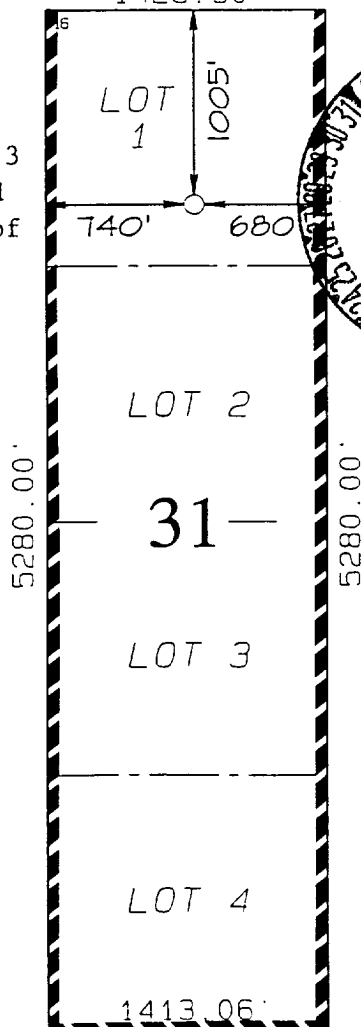
UL or lot no.	Section	Township	Range	Lot Idn	Feet from the	North/South line	Feet from the	East/West line	County

¹² Dedicated Acres 345.59	¹³ Joint or Infill	¹⁴ Consolidation Code	¹⁵ Order No. NSP For Dakota: R2046 T32N, R5W Tract K
---	-------------------------------	----------------------------------	---

NO ALLOWABLE WILL BE ASSIGNED TO THIS COMPLETION UNTIL ALL INTERESTS HAVE BEEN CONSOLIDATED OR A NON-STANDARD UNIT HAS BEEN APPROVED BY THE DIVISION

1428.90'

Includes Lots 1, 2, 3
and 4 of Sec. 31 and
Lots 1, 2, 3 and 4 of
Sec. 30



¹⁷ OPERATOR CERTIFICATION

I hereby certify that the information contained herein is true and complete to the best of my knowledge and belief.

Signature
Gary Brink
Printed Name
Production Superintendent
Title
Date
1/9/01

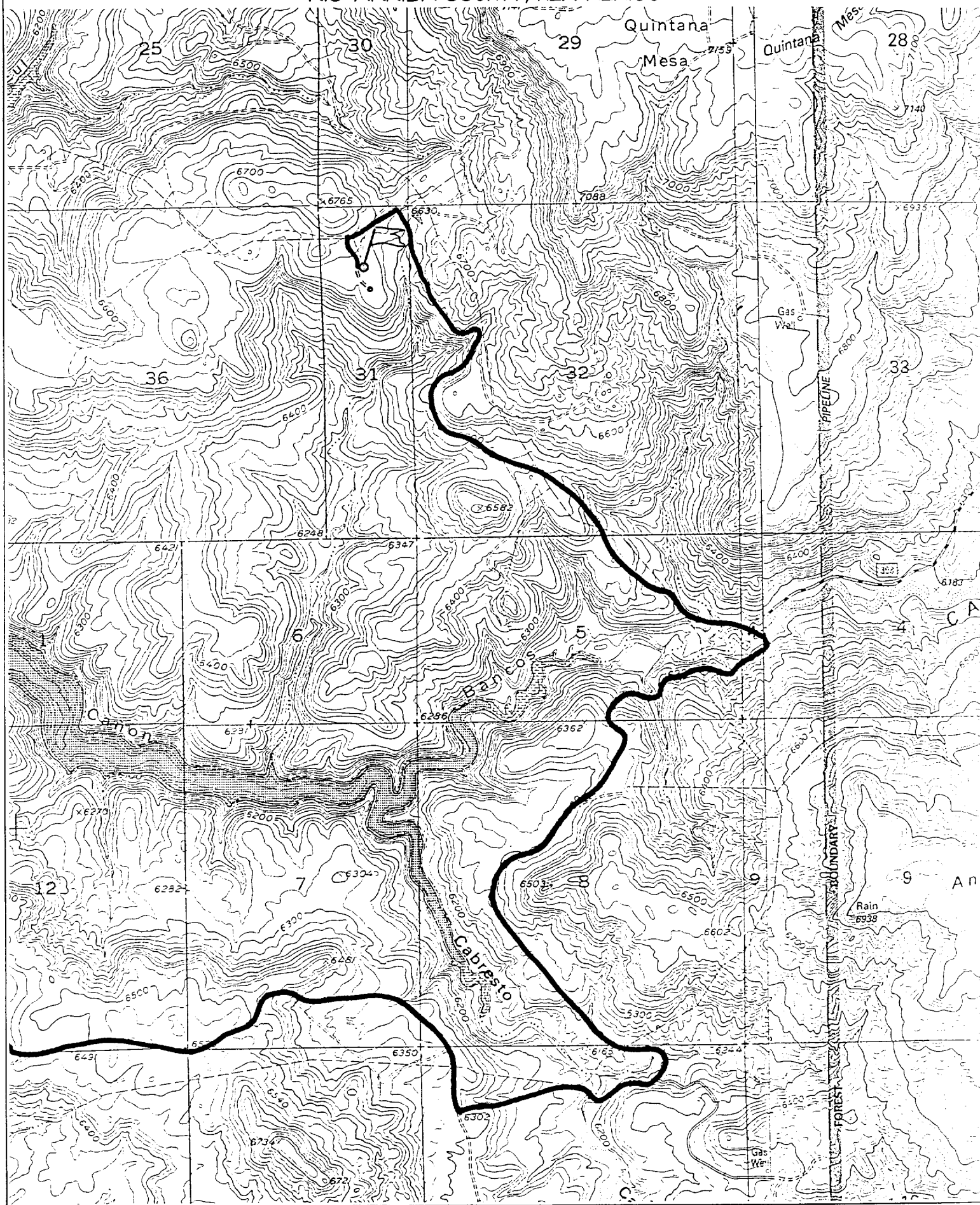
¹⁸ SURVEYOR CERTIFICATION

I hereby certify that the well location shown on this plat was plotted from field notes of actual surveys made by me or under my supervision, and that the same is true and correct to the best of my belief.

SEPTEMBER 12, 2000
Date of Survey
Signature and Seal of Surveyor
NEALE C. EDWARDS
NEW MEXICO
6857
Certificate
6857

ENERGEN RESOURCES CORPORATION SAN JUAN 32-5 UNIT #III

1005' FNL & 680' FEL, SECTION 31, T32N, R5W, N.M.P.M.
RIO ARriba COUNTY, NEW MEXICO



OPERATIONS PLAN

WELL NAME: San Juan 32-5 Unit 111

LOCATION: 1005' FNL, 680' FEL, Section 31, T32N, R5W, Rio Arriba County, NM

FIELD: Basin Fruitland Coal

ELEVATION: 6654' GL

FORMATION TOPS:

Surface	San Jose
Nacimiento	1409
Ojo Alamo	2704
Kirtland	2819
Fruitland	3224

Total Depth 3444

LOGGING PROGRAM:

Open Hole Logs:

Surface to intermediate: None

Inter TD to total depth: Temp/HRI/CNT, LDT/GR

Mud Logs: Intermediate to total depth

Coring: None

Natural Gauges: Every 500' from intermediate TD to total depth

MUD PROGRAM: Fresh water low solids mud from surface to intermediate TD (9.0 PPG).
Air/mist from intermediate casing point to total depth.

CASING PROGRAM:

<u>HOLE SIZE</u>	<u>DEPTH</u>	<u>CSG SIZE</u>	<u>WT.</u>	<u>GRADE</u>
12 1/4"	200'	9 5/8"	36#	J-55 – ST&C
8 3/4"	3329'	7"	20#	J-55 – ST&C
6 1/4"	3454'			

TUBING PROGRAM:

3400'	2 3/8"	4.7#	J-55
-------	--------	------	------

WELLHEAD: 11" 3000 x 9 5/8" casing head. 11" 3000 x 7 1/16" 3000 xmas tree.

BOP SPECIFICATIONS:

An 11" 2000 psi minimum double gate BOP stack (Figure 1) will be used following nipple up of casing head. During air drilling operations, a Shaffer Type 50 or equivalent rotating head will be installed on top of the stack. A 2" nominal, 2000 psi minimum choke manifold will be used. An upper Kelly Cock valve with handle available and drill string valve to fit each drill string will be available on the rig floor during drilling operations.

CEMENTING:

9 5/8" surface casing - cement with 110 sks Class B Cement with 1/4" flocele/sk and 2% calcium chloride (130 cu. ft. of slurry, 100% excess to circulate to surface). WOC 12 hrs. Test casing to 600# for 30 minutes.

Texas Pattern Guide Shoe on bottom. 3 bow type centralizers spaced throughout the string.

7" intermediate casing – cement with 325 sks 65/35 Class B Poz with 6% gel, 2% calcium chloride, 10% gilsonite, and 1/4# flocele/sk. Tail with 100 sks Class B w/2% calcium chloride, 10% gilsonite and 1/4# flocele/sk. (751 cu. ft. of slurry, 50% excess to circulate to surface). WOC 12 hrs. If cement does not circulate, run temperature survey in 8 hrs. to determine TOC. Test casing to 1200 psi for 30 minutes.

Cement nose guide shoe on bottom with a self-fill insert float valve on top of shoe joint. 10 bow spring centralizers spaced every 2nd joint off bottom. Two turbolating centralizers at the base of the Ojo Alamo.

OTHER INFORMATION:

- 1) The Basin Fruitland Coal will be completed.
- 2) No abnormal temperatures or pressures are anticipated.
- 3) If lost circulation is encountered sufficient LCM will be added to the mud system to maintain well control.
- 4) This gas is dedicated.
- 5) Anticipated pore pressure for the Fruitland is 700 psi.