

District II
PO Drawer DD, Artesia, NM 88211-0719District III
1000 Rio Brazos Rd., Aztec, NM 87410OIL CONSERVATION DIVISION
PO Box 2088
Santa Fe, NM 87504-2088Submit to Appropriate District Office
State Lease - 4 Copies
Fee Lease - 3 CopiesDistrict IV
PO Box 2088, Santa Fe, NM 87504-2088☐ AMENDED REPORT

WELL LOCATION AND ACREAGE DEDICATION PLAT

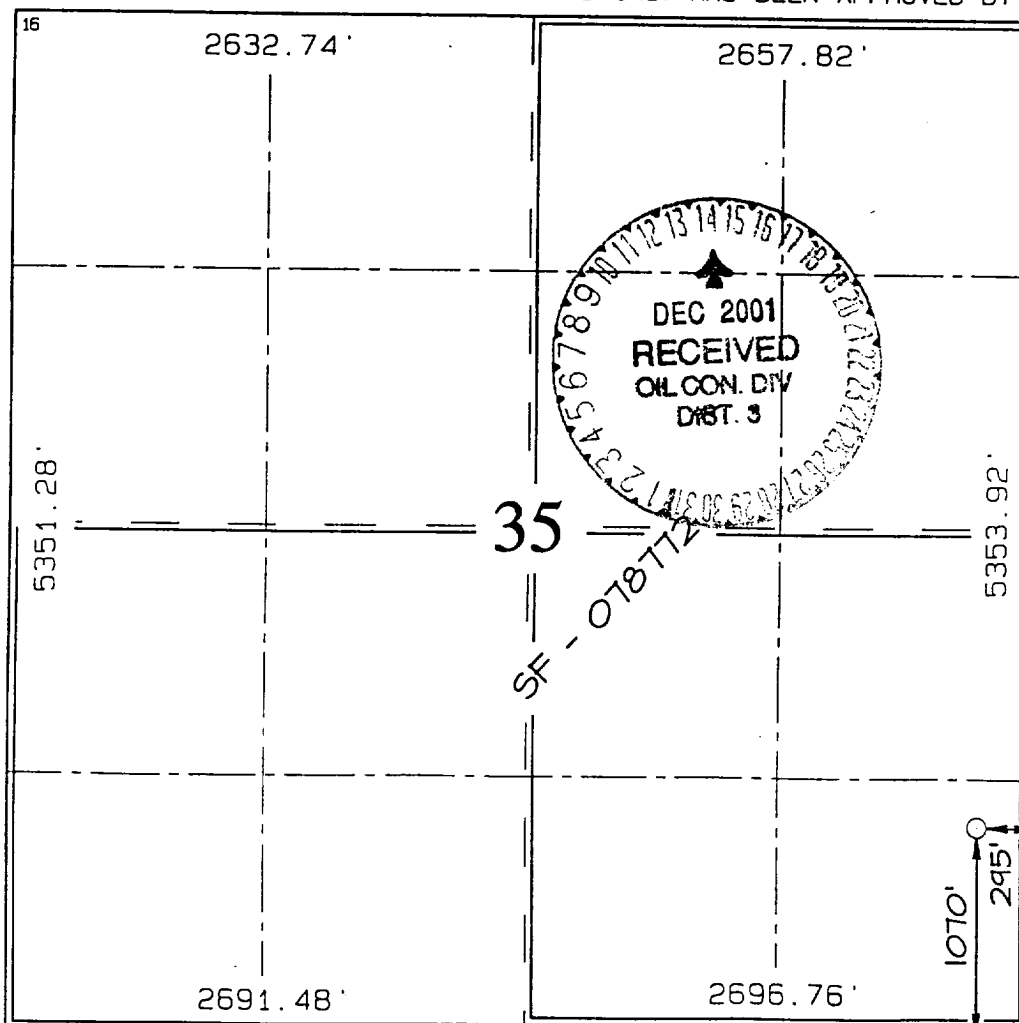
*API Number		*Pool Code 72319 / 71599	*Pool Name Blanco Mesaverde / Basin Dakota
*Property Code 17033	*Property Name ROSA UNIT		*Well Number 918
*OGRID No. 120782	*Operator Name WILLIAMS PRODUCTION COMPANY		*Elevation 6325'

10 Surface Location

UL or lot no. P	Section 35	Township 32N	Range 6W	Lot Idn	Feet from the 1070	North/South line SOUTH	Feet from the 295	East/West line EAST	County RIO ARriba
--------------------	---------------	-----------------	-------------	---------	-----------------------	---------------------------	----------------------	------------------------	----------------------

11 Bottom Hole Location If Different From Surface

UL or lot no.	Section	Township	Range	Lot Idn	Feet from the	North/South line	Feet from the	East/West line	County
12 Dedicated Acres 320.0 Acres - (S/2) DK - (E/2) MV					13 Joint or Infill	14 Consolidation Code	15 Order No.		

NO ALLOWABLE WILL BE ASSIGNED TO THIS COMPLETION UNTIL ALL INTERESTS HAVE BEEN CONSOLIDATED
OR A NON-STANDARD UNIT HAS BEEN APPROVED BY THE DIVISION

17 OPERATOR CERTIFICATION

I hereby certify that the information
contained herein is true and complete
to the best of my knowledge and belief

Signature

JOHN C. THOMPSON

Printed Name

ENGINEER / AGENT

Title

Date

12/14/01

18 SURVEYOR CERTIFICATION

I hereby certify that the well location
shown on this plat was plotted from field
notes of actual surveys made by me or under
my supervision, and that the same is true
and correct to the best of my belief.Revised: DECEMBER 13, 2001
Survey Date: DECEMBER 7, 2000

Signature and Seal of Professional Surveyor

JASON C. EDWARDS
Certificate Number 15269