

DATE _____

APR 12 2001

District I
PO Box 1980, Hobbs, NM 88241-1980

District II
PO Drawer DD, Artesia, NM 88211-0719

District III
1000 Rio Brazos Rd., Aztec, NM 87410

District IV
PO Box 2088, Santa Fe, NM 87504-2088

State of New Mexico
Energy, Minerals & Natural Resources Department

Form C-102

Revised February 21, 1994

Instructions on back

Submit to Appropriate District Office

State Lease - 4 Copies

Fee Lease - 3 Copies

OIL CONSERVATION DIVISION
PO Box 2088
Santa Fe, NM 87504-2088

☐ AMENDED REPORT

WELL LOCATION AND ACREAGE DEDICATION PLAT

*API Number 30-039-26685		*Pool Code 72319	*Pool Name Blanco Mesaverde
*Property Code 17033	*Property Name ROSA UNIT		*Well Number 44B
*GRID No. 120782	*Operator Name WILLIAMS PRODUCTION COMPANY		*Elevation 6658'

¹⁰ Surface Location

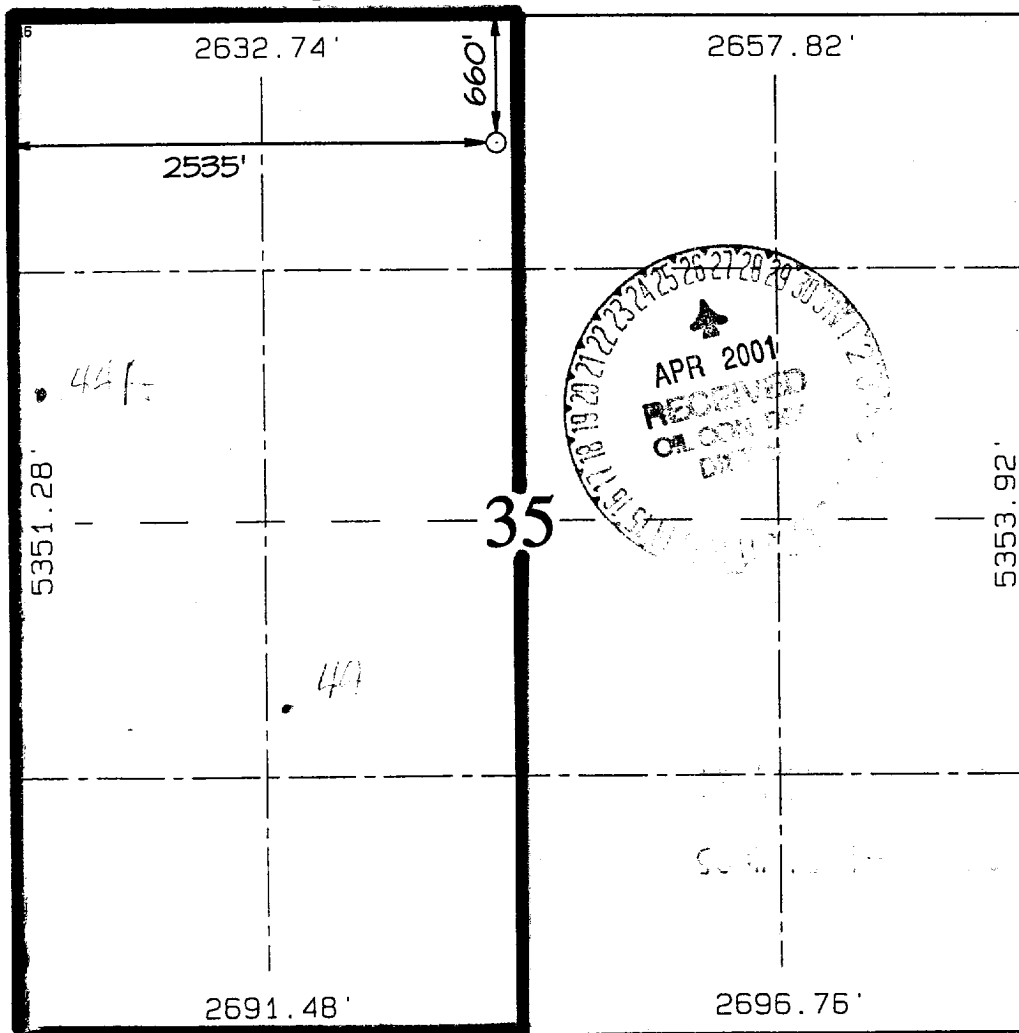
UL or lot no.	Section	Township	Range	Lot Idn	Feet from the	North/South line	Feet from the	East/West line	County
C	35	32N	6W		660	NORTH	2535	WEST	RIO ARRIBA

¹¹ Bottom Hole Location If Different From Surface

UL or lot no.	Section	Township	Range	Lot Idn	Feet from the	North/South line	Feet from the	East/West line	County

¹² Dedicated Acres 320 - W/2	¹³ Joint or Infill I	¹⁴ Consolidation Code U	¹⁵ Order No.
--	------------------------------------	---------------------------------------	-------------------------

NO ALLOWABLE WILL BE ASSIGNED TO THIS COMPLETION UNTIL ALL INTERESTS HAVE BEEN CONSOLIDATED
OR A NON-STANDARD UNIT HAS BEEN APPROVED BY THE DIVISION



¹⁷ OPERATOR CERTIFICATION

I hereby certify that the information contained herein is true and complete to the best of my knowledge and belief

Signature

Steve Nelson

Printed Name

Agent, Nelson Consulting

Title

February 28, 2001

Date

¹⁸ SURVEYOR CERTIFICATION

I hereby certify that the well location shown on this plat was plotted from field notes of actual surveys made by me or under my supervision and that the same is true and correct to the best of my belief.

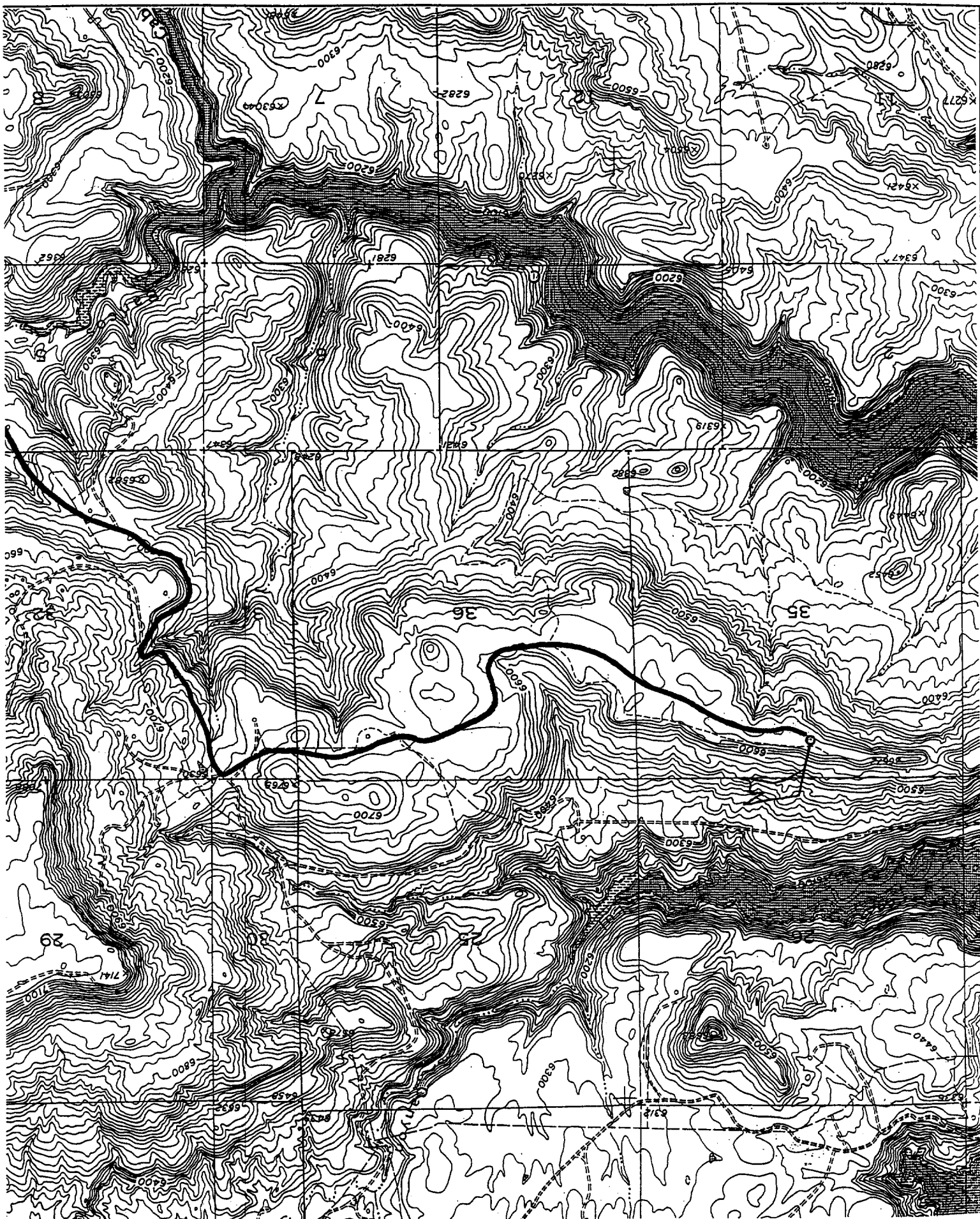
NOVEMBER 22, 2000

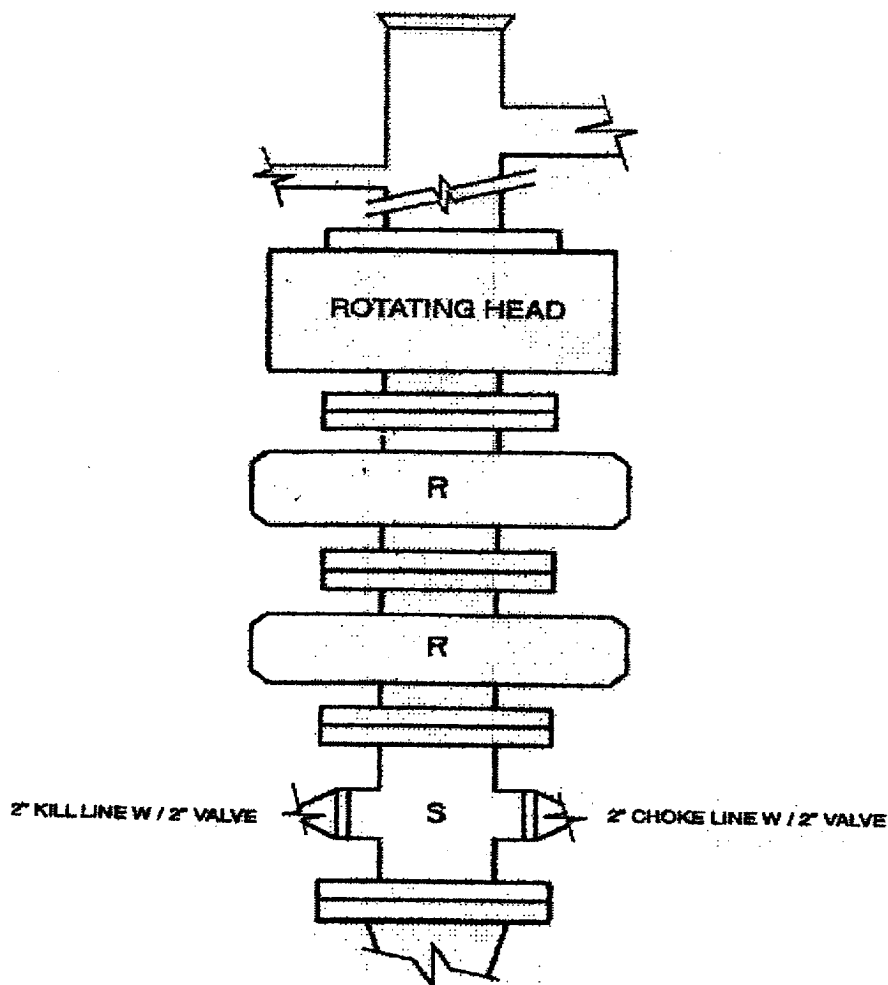
Date of Survey

Signature and Seal of Professional Surveyor

NEALE EDWARDS
NEW MEXICO
6857
Certificate No. 6857

WILLIAMS PRODUCTION COMPANY ROSA UNIT #44B
660' FNL & 2535' FNL, SECTION 35, T32N, R6W, N.M.P.M.
RIO ARriba COUNTY, NEW MEXICO





2M – BOP ARRANGEMENT

2M SYSTEM:

- Annular preventer or double ram or two rams with one being blind and one being a pipe ram
- Kill line (2 inch minimum)
- 1 kill line valve (2 inch minimum)
- 1 choke line valve
- 2 chokes (refer to diagram)
- Upper kelly cock valve with handle available
- Safety valve and subs to fit all drill strings in use
- Pressure gauge on choke manifold
- 2 inch minimum choke line
- Fill-up line above uppermost preventer

Anticipated reservoir pressure is expected to be less than 1300 psi on all encountered zones.

All ram type preventers and related equipment will be hydraulically tested at nipple-up and after any use under pressure to 1500 psi. The pipe and blind rams will be activated and checked for operational readiness each trip. All checks of the BOP stack and equipment will be noted on the daily drilling report. The BOP equipment will include a kelly cock with handle, floor safety valve with changeovers for each tool joint in the string and choke manifold all rated to 2000 psi