

UNITED STATES
DEPARTMENT OF THE INTERIOR
BUREAU OF LAND MANAGEMENT

APPLICATION FOR PERMIT TO DRILL OR DEEPEN

a. TYPE OF WORK

DRILL ☒

DEEPEN ☐

b. TYPE OF WELL

OIL
WELL ☐

GAS
WELL ☒

OTHER ☐

SINGLE
ZONE ☒

MULTIPLE
ZONE ☐

2. NAME OF OPERATOR

ENERGEN RESOURCES CORPORATION

3. ADDRESS AND TELEPHONE NO.

2198 Bloomfield Highway; Farmington, NM 87401

4. LOCATION OF WELL (Report location clearly and in accordance with any State requirements.)*
At surface

410' FSL, 1320' FEL

At proposed prod. zone

14. DISTANCE IN MILES AND DIRECTION FROM NEAREST TOWN OR POST OFFICE*

17 miles North of Gobernador, New Mexico

15. DISTANCE FROM PROPOSED*

LOCATION TO NEAREST
PROPERTY OR LEASE LINE, FT.
(Also to nearest drlg. unit line, if any) 410'

16. NO. OF ACRES IN LEASE

964.81

17. NO. OF ACRES ASSIGNED
TO THIS WELL

355.25

18. DISTANCE FROM PROPOSED LOCATION*
TO NEAREST WELL, DRILLING, COMPLETED,
OR APPLIED FOR, ON THIS LEASE, FT. 50'

19. PROPOSED DEPTH

3142' —

20. ROTARY OR CABLE TOOLS

Rotary

21. ELEVATIONS (Show whether DF, RT, GR, etc.)

6405' GL

22. APPROX. DATE WORK WILL START*

23. PROPOSED CASING AND CEMENTING PROGRAM

SIZE OF HOLE	GRADE SIZE OF CASING	WEIGHT PER FOOT	SETTING DEPTH	QUANTITY OF CEMENT
12-1/4"	9-5/8"	36#	200'	130 cu. ft., Circ to surface
8-3/4"	7"	20#	3017'	681 cu. ft., Circ to surface
6-1/4"			3142' —	

Selective perforate and sand water fracture the Fruitland Coal.
This gas is dedicated.
A Williams Field Service Pipeline ROW Plat is attached.

THIS IS AN EXPEDITED APD.



IN ABOVE SPACE DESCRIBE PROPOSED PROGRAM: If proposal is to deepen, give data on present productive zone and proposed new productive zone. If proposal is to drill or deepen directionally, give pertinent data on subsurface locations and measured and true vertical depths. Give blowout preventer program, if any.

24.

SIGNED

Sam Baham

TITLE

Drilling & Completion Foreman

DATE

3/20/01

(This space for Federal or State office use)

PERMIT NO.

APPROVAL DATE

6/27/01

Application approval does not warrant or certify that the applicant holds legal or equitable title to those rights in the subject lease which would entitle the applicant to conduct operations thereon.

CONDITIONS OF APPROVAL, IF ANY:

APPROVED BY

/s/ Lee Otterli

TITLE

*See Instructions On Reverse Side

DATE

Title 18 U.S.C. Section 1001, makes it a crime for any person knowingly and willfully to make to any department or agency of the United States any false, fictitious or fraudulent statements or representations as to any matter within the jurisdiction of the United States.

NMOOD

HOLD C104 FOR NSP

K.

District I
PO Box 1980, Hobbs, NM 88241-1980

State of New Mexico
Energy, Minerals & Natural Resources Department

Form C-102
Revised February 21, 1994

District II
PO Drawer DD, Artesia, NM 88211-0719

OIL CONSERVATION DIVISION
PO Box 2088
Santa Fe, NM 87504-2088

Submit to Appropriate District Office
State Lease - 4 Copies
Fee Lease - 3 Copies

District III
1000 Rio Brazos Rd., Aztec, NM 87410

District IV
PO Box 2088, Santa Fe, NM 87504-2088

2001 MAR 22 PM 3:22

☐ AMENDED REPORT

WELL LOCATION AND ACREAGE DEDICATION PLAT

*API Number 30-039-26720		*Pool Code 71629	*Pool Name Basin Fruitland Coal
*Property Code 21996	*Property Name SAN JUAN 32-5 UNIT		*Well Number 112
*GRID No. 162928	*Operator Name ENERGEN RESOURCES CORPORATION		*Elevation 6405'

10 Surface Location

UL or lot no.	Section	Township	Range	Lot Idn	Feet from the	North/South line	Feet from the	East/West line	County
P	19	32N	5W		410	SOUTH	1320	EAST	RIO ARriba

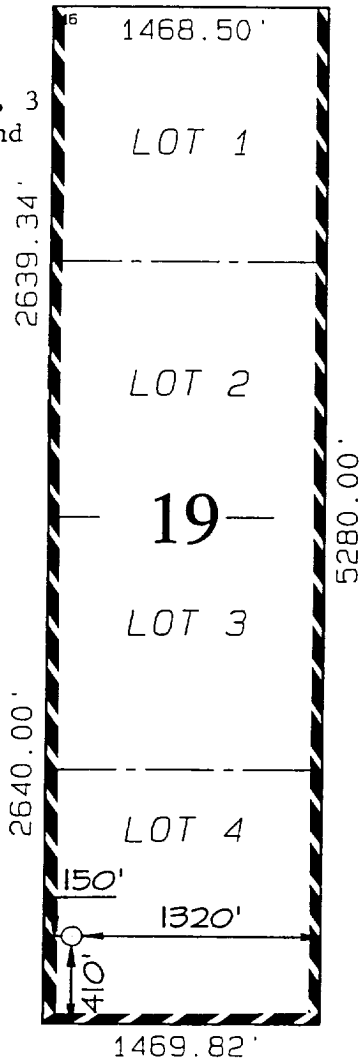
11 Bottom Hole Location If Different From Surface

UL or lot no.	Section	Township	Range	Lot Idn	Feet from the	North/South line	Feet from the	East/West line	County

12 Dedicated Acres 355.25	13 Joint or Infill	14 Consolidation Code	15 Order No. NSP For Dakota 62 246 72211650 1000-5
-------------------------------------	--------------------	-----------------------	--

NO ALLOWABLE WILL BE ASSIGNED TO THIS COMPLETION UNTIL ALL INTERESTS HAVE BEEN CONSOLIDATED OR A NON-STANDARD UNIT HAS BEEN APPROVED BY THE DIVISION

Includes Lots 1, 2, 3
and 4 of Sec. 19 and
Lots 1, 2, 3 and
4 of Sec. 18



17 OPERATOR CERTIFICATION

I hereby certify that the information contained herein is true and complete to the best of my knowledge and belief.

Signature

Gary Brink

Printed Name

Production Superintendent

Title

9/20/01

Date

18 SURVEYOR CERTIFICATION

I hereby certify that the well location shown on this plat was plotted from field notes of actual surveys made by me or under my supervision, and that the same is true and correct to the best of my belief.

SEPTEMBER 12, 2000

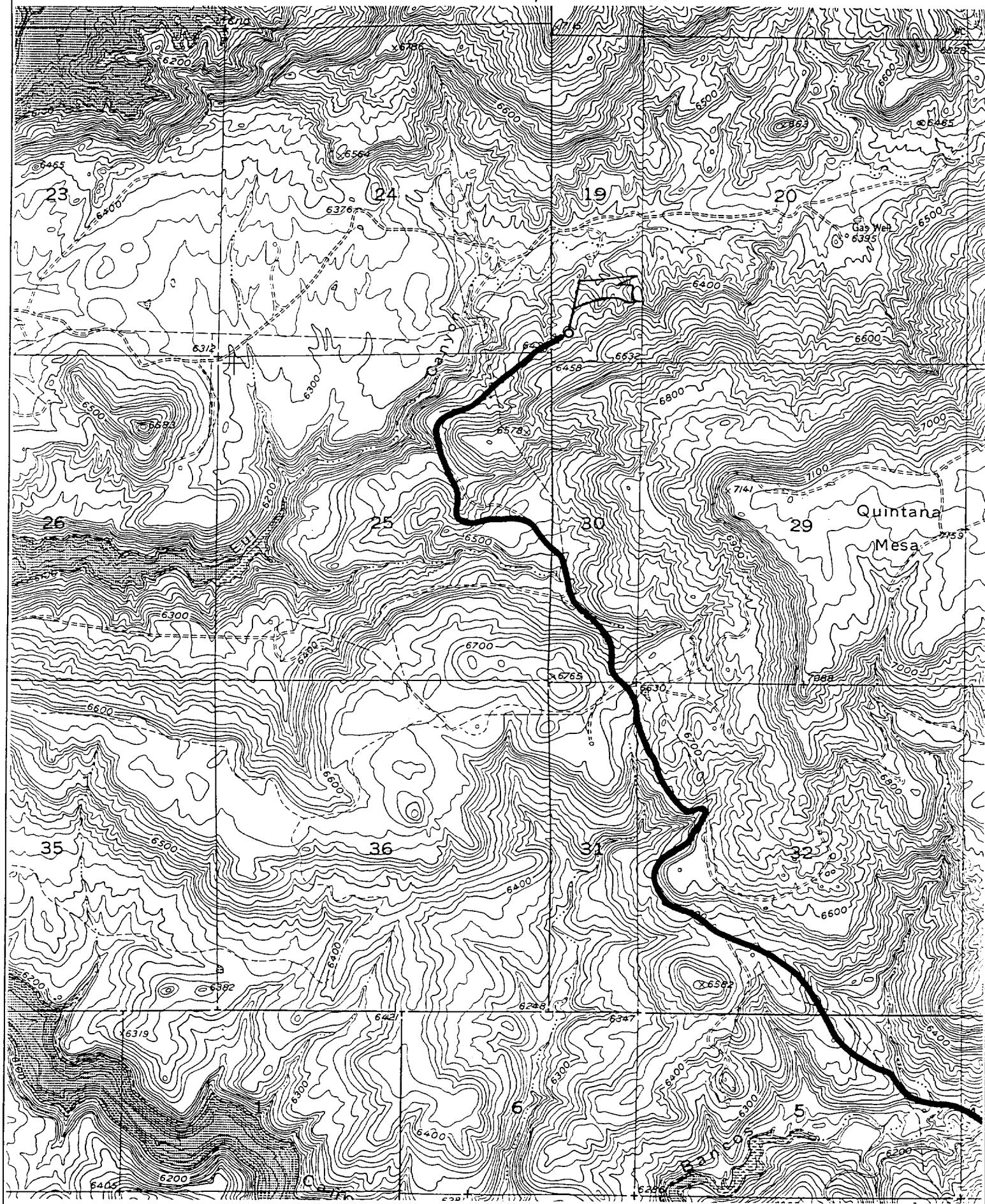
Date of Survey

Signature and Seal

NEALE C. EDWARDS
NEW MEXICO
6857
REGISTERED PROFESSIONAL SURVEYOR
Certificate Number 6857

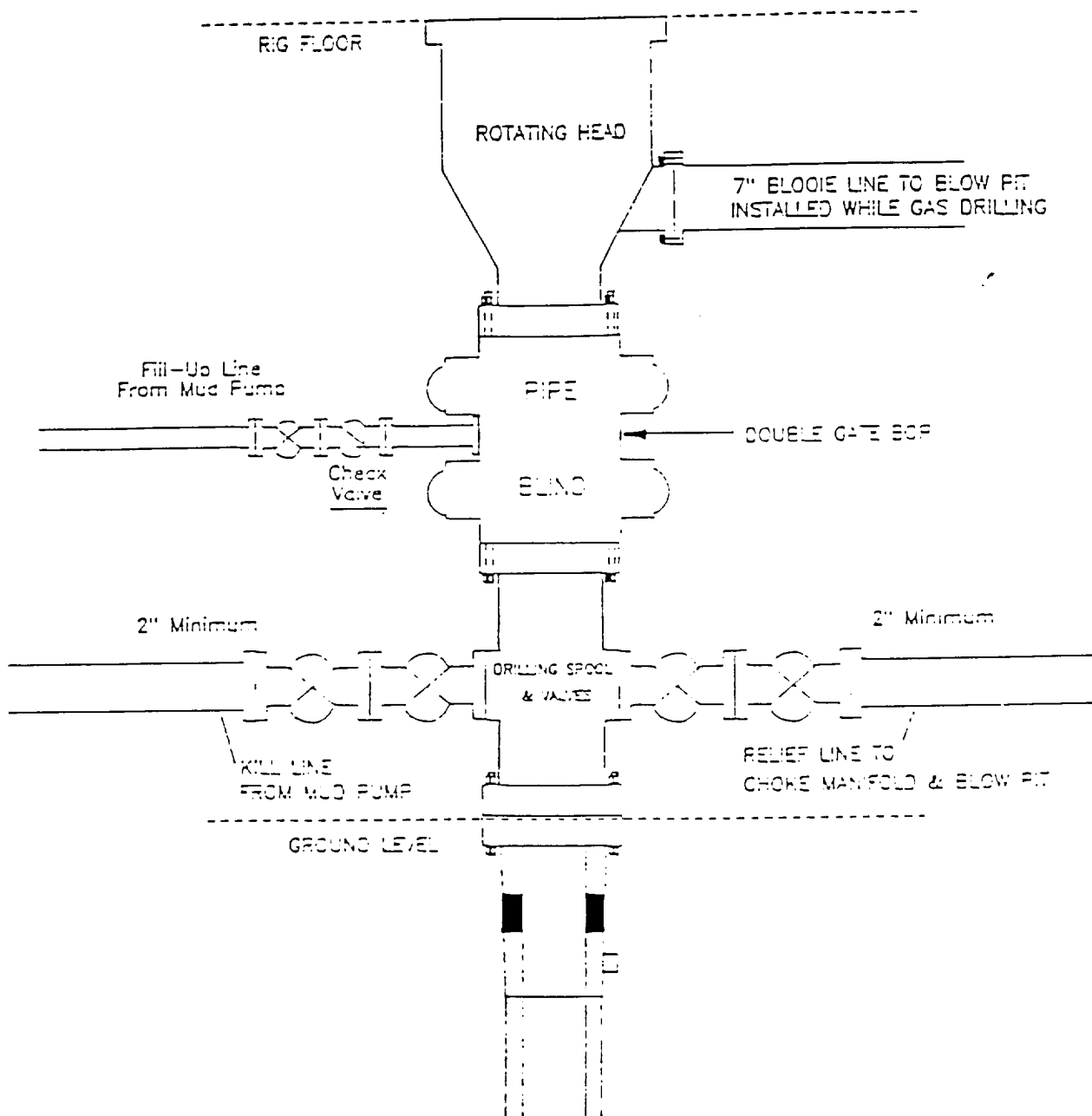
ENERGEN RESOURCES CORPORATION SAN JUAN 32-5 UNIT #112

410' FSL & 1320' FEL, SECTION 19, T32N, R5W, N.M.P.M.
RIO ARriba COUNTY, NEW MEXICO



ENERGEN RESOURCES CORPORATION

Mesa Verde / Dakota Well BOP Configuration



Minimum BOP installation for a Mesa Verde well from Surface to Total Depth. 11" Bore, 2000psi minimum working pressure double gate BOP to be equipped with blind and pipe rams. A Schaeffer Type 50 or equivalent rotating head to be installed on the top of the BOP. All equipment is 2000psi working pressure or greater.

Figure #1