

NEW MEXICO OIL CONSERVATION COMMISSION  
Santa Fe, New Mexico

Form C-101  
Revised (12/1/55)

NOTICE OF INTENTION TO DRILL

Notice must be given to the District Office of the Oil Conservation Commission and approval obtained before drilling or recompletion begins. If changes in the proposed plan are considered advisable, a copy of this notice showing such changes will be returned to the sender. Submit this notice in QUINTUPLICATE. One copy will be returned following approval. See additional instructions in Rules and Regulations of the Commission. If State Land submit 6 Copies Attach Form C- 128 in triplicate to first 3 copies of form C-101

Denver, Colorado

June 16, 1961

(Place)

(Date)

OIL CONSERVATION COMMISSION  
SANTA FE, NEW MEXICO

Gentlemen:

You are hereby notified that it is our intention to commence the Drilling of a well to be known as  
**Consolidated Oil & Gas, Inc.**

(Company, or Operator)

Price

(Lease)

Well No. **1-15**, in **N** (Unit) The well is

located **895** feet from the **South** line and **1470** feet from the

**West**

line of Section **15**, T. **31N**, R. **13W**, NMPM.

(GIVE LOCATION FROM SECTION LINE) **Basin Dakota** Pool, **San Juan** County

D	C	B	A
E	F	G	H
L	K	J	I
M	<sup>O</sup> N	O	P

If State Land the Oil and Gas Lease is No.

If patented land the owner is **Elden Loar**

Address **La Plata, New Mexico**

We propose to drill well with drilling equipment as follows:

**Rotary with mud.**

The status of plugging bond is **Blanket in force.**

Drilling Contractor **Huron Drilling Company, Inc.**

We intend to complete this well in the **Dakota formation.**

formation at an approximate depth of **6900** feet.

CASING PROGRAM

We propose to use the following strings of Casing and to cement them as indicated:

Size of Hole	Size of Casing	Weight per Foot	New or Second Hand	Depth	Sacks Cement
<b>13 3/4</b>	<b>9 5/8</b>	<b>32.75</b>	<b>New</b>	<b>200</b>	<b>150</b>
<b>7 7/8</b>	<b>5 1/2</b>	<b>15.5</b>	<b>New</b>	<b>6900</b>	<b>150 thru shoe</b>
				<b>and 150 ex thru stage collar</b>	<b>at base of</b>
				<b>Point Lookout.</b>	

If changes in the above plans become advisable we will notify you immediately.

ADDITIONAL INFORMATION (If recompletion give full details of proposed plan of work.)

Approved 6-21, 19 61  
Except as follows:

Sincerely yours,

**Consolidated Oil & Gas, Inc.**  
(Company or Operator)

By [Signature]

Position **Chief Engineer**

Send Communications regarding well to

Name **J. B. Ladd, Vice President**

Address **2112 Tower Bldg., Denver 2, Colorado**

OIL CONSERVATION COMMISSION

By [Signature]

NUMBER OF COPIES RECEIVED	
DISTRIBUTION	
SANTA FE	
FILE	
U.S.G.S.	
LAND OFFICE	
TRANSPORTER	OIL
	GAS
PRORATION OFFICE	
OPERATOR	

**NEW MEXICO OIL CONSERVATION COMMISSION**  
**WELL LOCATION AND ACREAGE DEDICATION PLAT**  
 SEE INSTRUCTIONS FOR COMPLETING THIS FORM ON THE REVERSE SIDE

FORM C-128  
 Revised 5/1/57

**SECTION A**

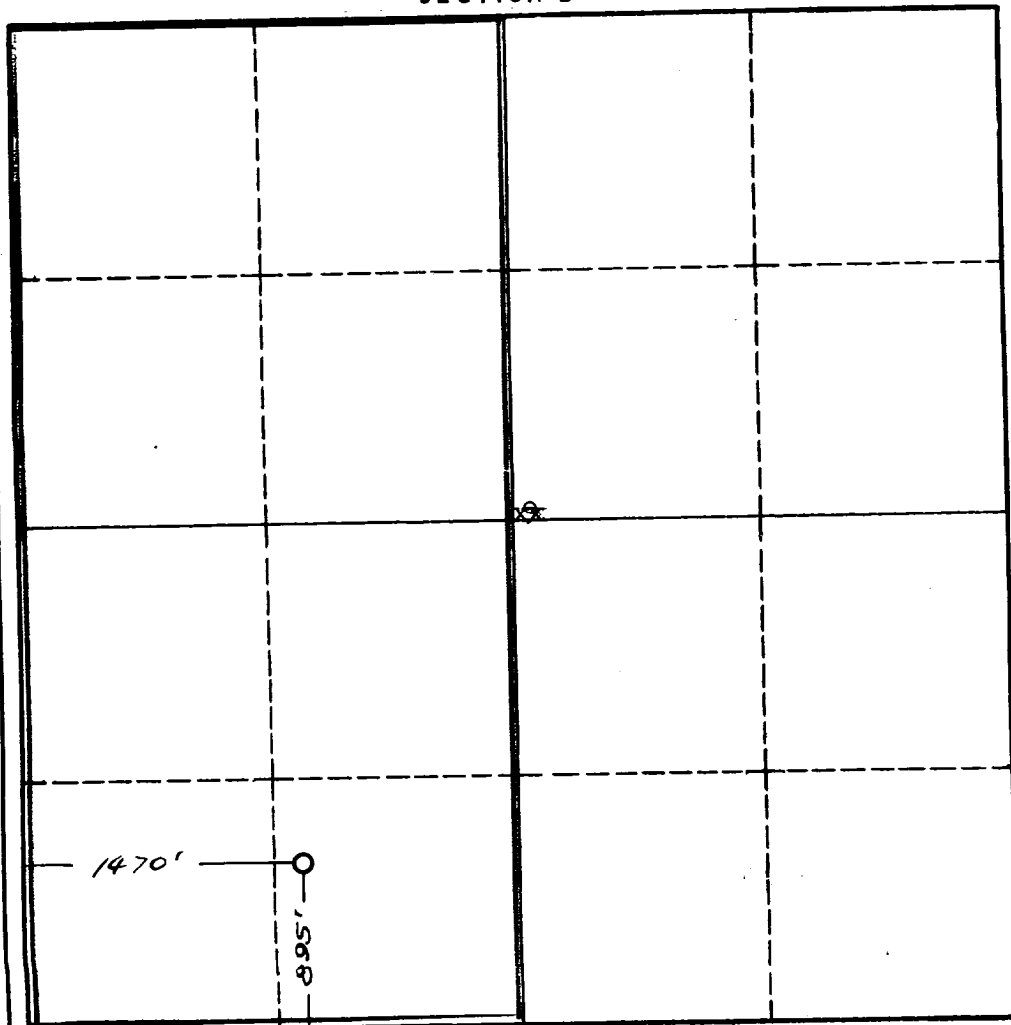
Operator <b>CONSOLIDATED OIL AND GAS CORPORATION</b>		Lease <b>Price</b>		Well No. <b>1-15</b>
Unit Letter <b>N</b>	Section <b>15</b>	Township <b>31 NORTH</b>	Range <b>13 WEST</b>	County <b>SAN JUAN</b>
Actual Footage Location of Well: <b>895</b> feet from the <b>SOUTH</b> line and <b>1470</b> feet from the <b>WEST</b> line				
Ground Level Elev. <b>5723.0</b>	Producing Formation <b>Dakota</b>	Pool <b>Basin</b>	Dedicated Acreage: <b>320</b> Acres	

Ref: GLO plat dated 9 July 1954

1. Is the Operator the only owner in the dedicated acreage outlined on the plat below? YES ☒ NO ☐ ("Owner" means the person who has the right to drill into and to produce from any pool and to appropriate the production either for himself or for himself and another. (65-3-29 (e) NMSA 1935 Comp.)
2. If the answer to question one is "no," have the interests of all the owners been consolidated by communitization agreement or otherwise? YES ☐ NO ☐ . If answer is "yes," Type of Consolidation \_\_\_\_\_
3. If the answer to question two is "no," list all the owners and their respective interests below:

Owner	Land Description

**SECTION B**



**CERTIFICATION**

I hereby certify that the information in SECTION A above is true and complete to the best of my knowledge and belief.

Name <i>James P. Leese</i>
Position <b>Chief Engineer</b>
Company <b>Consolidated Oil &amp; Gas, Inc.</b>
Date <b>6/19/61</b>

I hereby certify that the well location shown on the plat in SECTION B was plotted from field notes of actual surveys made by me or under my supervision, and that the same is true and correct to the best of my knowledge and belief.

Date Surveyed <b>9 June 1961</b>
Registered Professional Engineer and/or Land Surveyor <i>James P. Leese</i> <b>James P. Leese</b>
Certificate No. <b>1463</b>

## INSTRUCTIONS FOR COMPLETION OF FORM C-128

1. Operator shall furnish and certify to the information called for in Section A.
2. Operator shall outline the dedicated acreage for *both* oil and gas wells on the plat in Section B.
3. A registered professional engineer or land surveyor registered in the State of New Mexico or approved by the Commission shall show on the plat the location of the well and certify this information in the space provided.
4. All distances shown on the plat must be from the outer boundaries of the Section.
5. If additional space is needed for listing owners and their respective interests as required in question 3 of Section A, please use space below.