

CORE ANALYSIS REPORT

FOR

E-PNG

DELHI-TAYLOR OIL CORPORATION

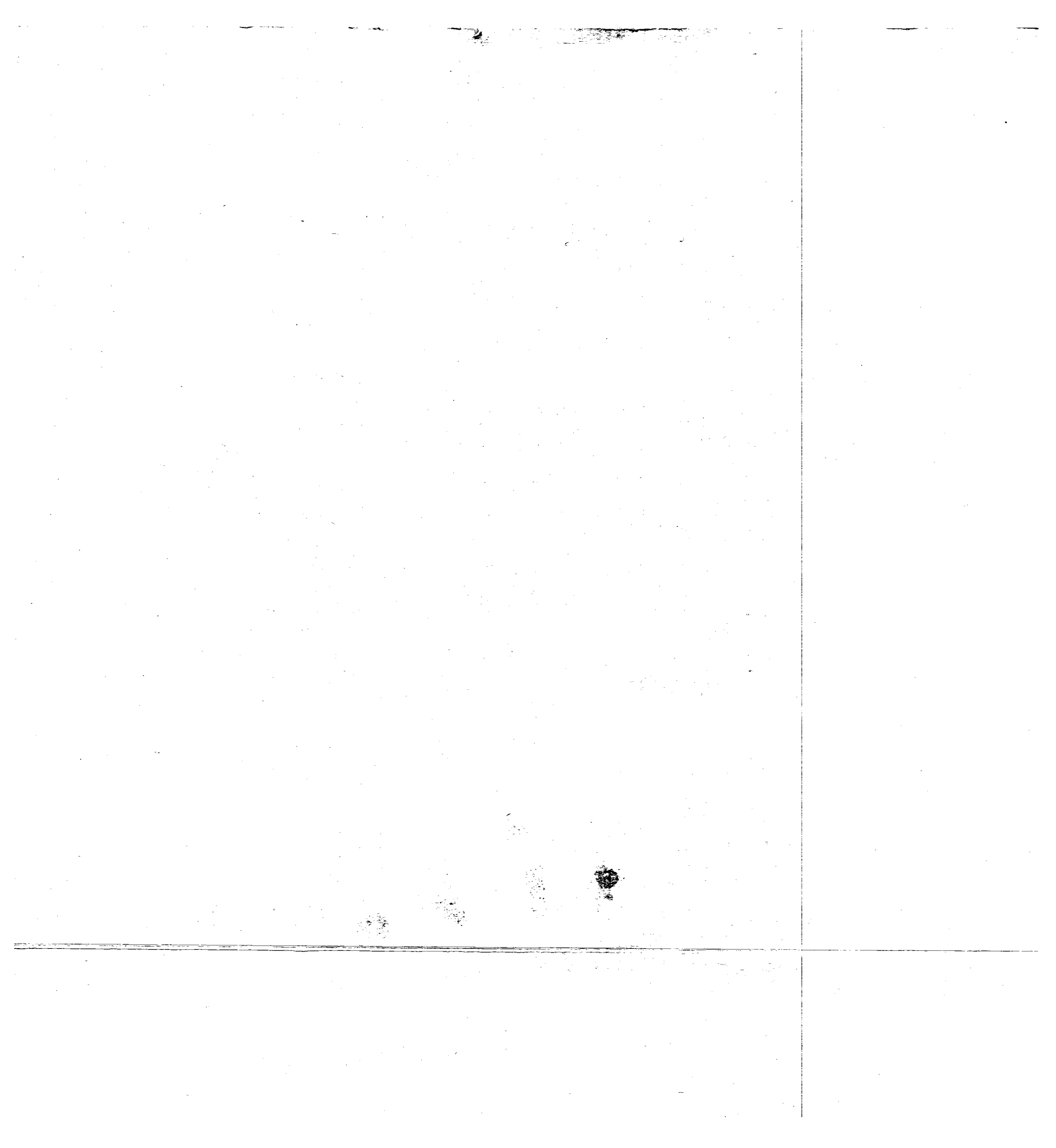
#18

~~NO. 3~~ DELHI-MUDGE WELL

SAN JUAN COUNTY, NEW MEXICO

LOCATION: SEC. 15-T31N-R11W

CONFIDENTIAL



COMPANY

DELHI-TAYLOR OIL CORPORATION

DATE ON

8/22/60

FILE NO.

RP-3-1251

WELL

NO. 3 DELHI-MUDGE

DATE OFF

8/22/60

ENGRS.

ENGLISH

FIELD

UNNAMED

FORMATION

GRANEROS

ELEV.

6128' Gr.

COUNTY

SAN JUAN

STATE

N.MEXICO

DRLG. FLD.

GAS

CORES

DIAMOND

LOCATION

SEC15 T31N R11W

REMARKS

SAMPLED BY CLI

SAND

LIMESTONE

CONGLOMERATE

CHERT

SHALE

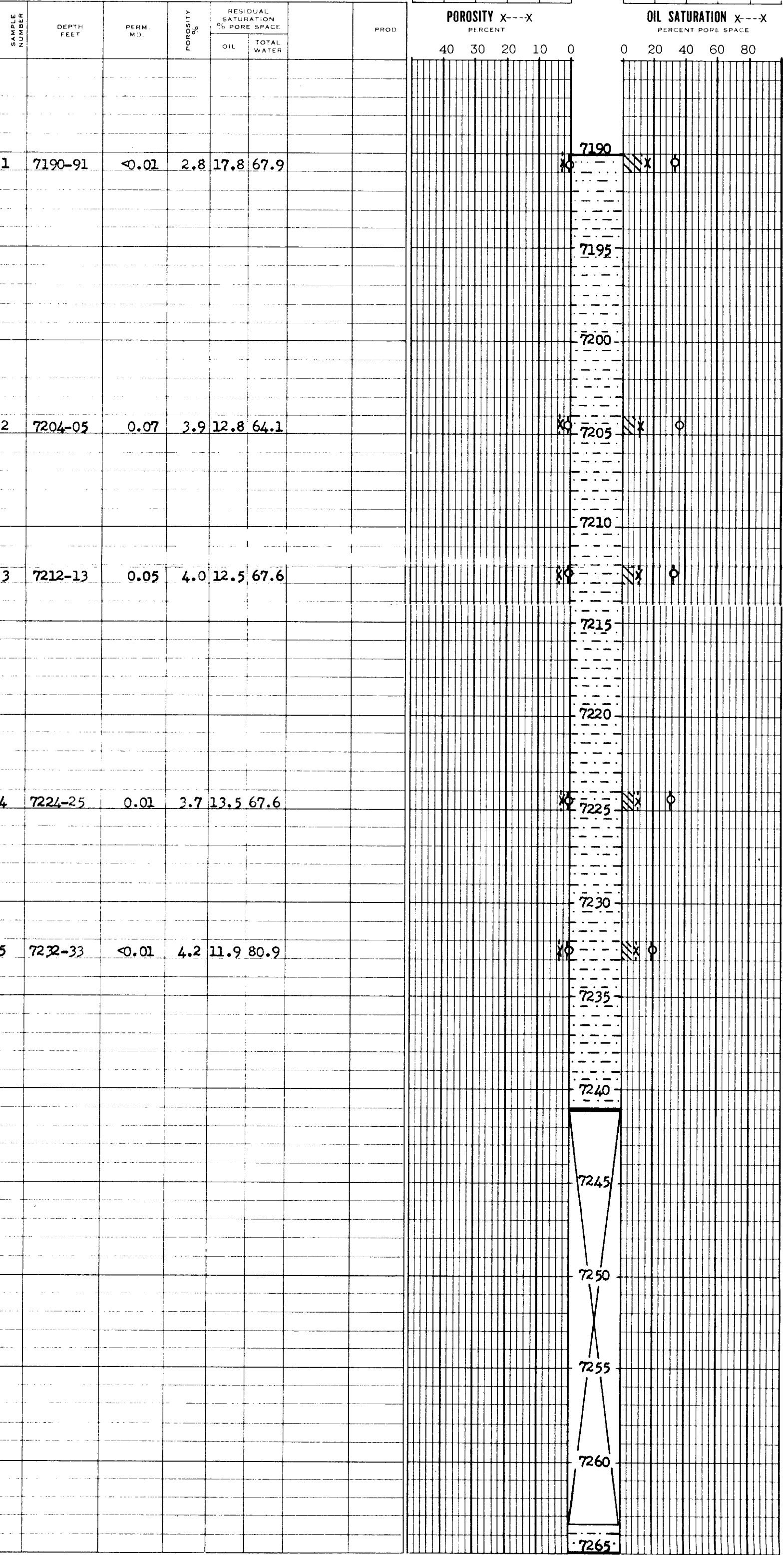
DOLOMITE

VERTICAL FRACTURE

These analyses, opinions or interpretations are based on observations and material supplied by the client to whom, and for whose exclusive and confidential use, this report is made. The interpretations or opinions expressed represent the best judgment of Core Laboratories, Inc. All errors and omissions excepted, but Core Laboratories, Inc. and its officers and employees, assume no responsibility and make no warranty or representations as to the productivity, proper operation, or profitability of any oil, gas or other mineral well or sand in connection with which such report is used or relied upon.

COMPLETION COREGRAPH

TABULAR DATA and INTERPRETATION



CORE LABORATORIES, INC.



Petroleum Reservoir Engineering

COMPANY DELHI-TAYLOR OIL CORPORATION FIELD UNNAMED FILE RP-3-1251
 WELL # 3 DELHI-MUDGE COUNTY SAN JUAN DATE 8/22/60
 LOCATION SEC15 T31N R11W STATE NEW MEXICO ELEV. 6128' Gr.

CORE-GAMMA CORRELATION

These analyses, opinions or interpretations are based on observations and material supplied by the client to whom, and for whose exclusive and confidential use, this report is made. The interpretations or opinions expressed represent the best judgment of Core Laboratories, Inc. (all errors and omissions excepted), but Core Laboratories, Inc. and its officers and employees, assume no responsibility and make no warranty or representations as to the productivity, proper operation, or profitability of any oil, gas or other mineral well or sand in connection with which such report is used or relied upon.

VERTICAL SCALE: 5" = 100'

CORE-GAMMA SURFACE LOG

(PATENT APPLIED FOR)

GAMMA RAY

RADIATION INCREASE →

COREGRAPH

TOTAL WATER ———

PERCENT TOTAL WATER

80 60 40 20 0

PERMEABILITY ———

MILLIDARCYS

3 2 1 0

POROSITY ———

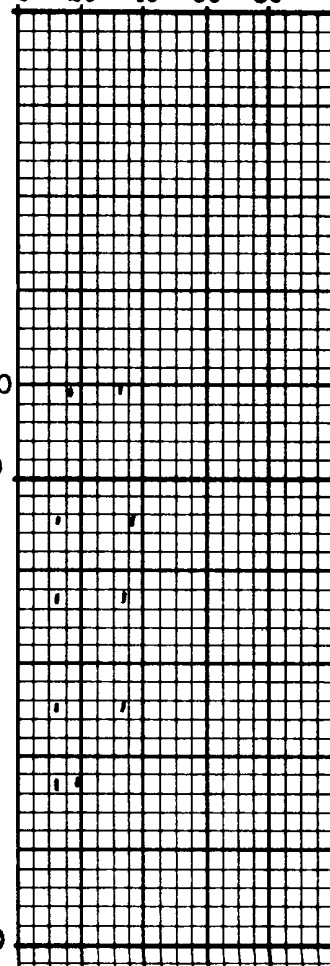
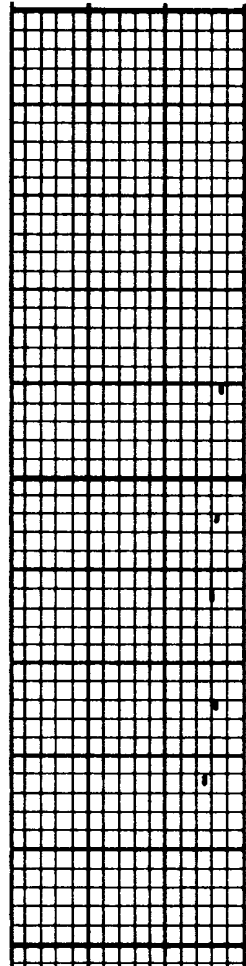
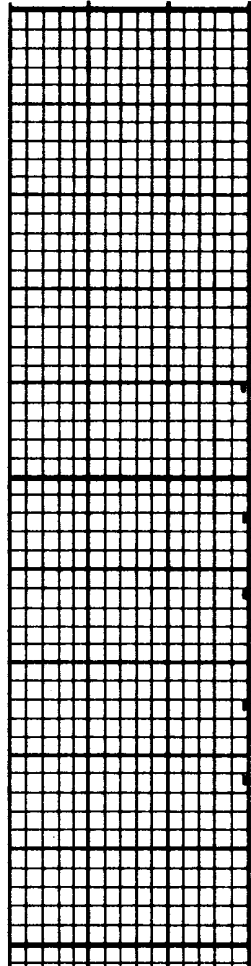
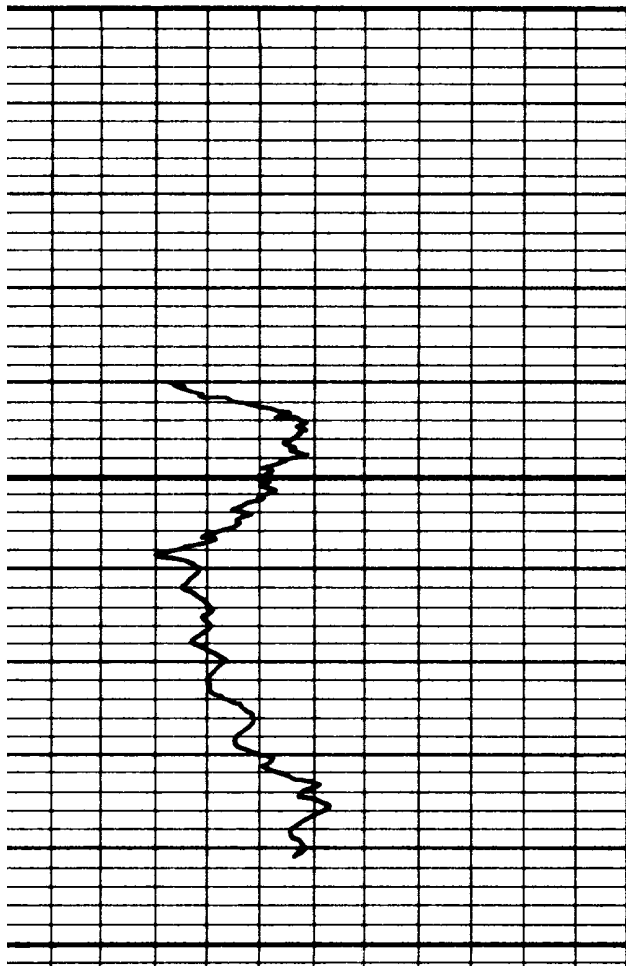
PERCENT

20 10 0

OIL SATURATION -----

PERCENT PORE SPACE

0 20 40 60 80



CORE LABORATORIES, INC.
Petroleum Reservoir Engineering
DALLAS, TEXAS
August 29, 1960

REPLY TO
724 PATTERSON BLDG
DENVER, COLORADO

Delhi-Taylor Oil Corporation
Box 1198
Farmington, New Mexico

Attention: Mr. Dan Painter

Subject: Core Analysis
No. 3 Delhi-Mudge Well
San Juan County, New Mexico
Location: Sec. 15-T31N-R11W

Gentlemen:

Graneros formation analyzed between 7190 and 7233 feet exhibited low to immeasurable permeability and is considered to be nonproductive.

Samples of the recovered formation were selected for analysis by an engineer of Core Laboratories, Inc., were quick-frozen to preserve fluid content and analyzed in the Farmington laboratory.

We sincerely appreciate this opportunity to be of service to you.

Very truly yours,

Core Laboratories, Inc.


J. D. Harris,
District Manager

JDH:FJ:ds

12 cc. - Addressee

4 cc. - Mr. Roy Pritchard
El Paso Natural Gas Company
Farmington, New Mexico