

NEW MEXICO OIL CONSERVATION COMMISSION

Santa Fe, New Mexico

NOTICE OF INTENTION TO DRILL ~~CONFIDENTIAL~~

Notice must be given to the District Office of the Oil Conservation Commission and approval obtained before drilling or recompletion begins. If changes in the proposed plan are considered advisable, a copy of this notice showing such changes will be returned to the sender. Submit this notice in **QUINTUPPLICATE**. One copy will be returned following approval. See additional instructions in Rules and Regulations of the Commission. **If State Land submit 6 Copies**

Farmington, New Mexico

(Place)

February 1, 1957

(Date)

OIL CONSERVATION COMMISSION
SANTA FE, NEW MEXICO

Gentlemen:

You are hereby notified that it is our intention to commence the (Drilling) ~~(Recompletion)~~ of a well to be known as

PAN AMERICAN PETROLEUM CORPORATION

(Company or Operator)

STATE GAS UNIT 'N'

(Lease)

Well No. **1**

N

(Unit)

located **1695** feet from the **North** line and **1090** feet from the

East

line of Section **16**, T. **31-N**, R. **31-W**, 12W, NMPM.

(GIVE LOCATION FROM SECTION LINE)

Alamo Mesaverte

Pool, **San Juan**

County

If State Land the Oil and Gas Lease is No. **B-11370-41**

If patented land the owner is

Address

We propose to drill well with drilling equipment as follows: **Rotary tools to total depth.**

The status of plugging bond is

Drilling Contractor **Moran Bros., Inc.**

Box 433, Farmington, New Mexico

We intend to complete this well in the **Mesaverte** formation at an approximate depth of **5200**

CASING PROGRAM

We propose to use the following strings of Casing and to cement them as indicated:

Size of Hole	Size of Casing	Weight per Foot	New or Second Hand	Depth	Sacks Cement
12-1/4"	9-5/8"	32.3#	New	250'	150
8-3/4"	7"	20#	New	4800'	100
6-1/4"	5-1/2"	14#	New	4700 to 5200' Liner	150

If changes in the above plans become advisable we will notify you immediately.

ADDITIONAL INFORMATION (If recompletion give full details of proposed plan of work.)

Plan to perforate opposite well developed sands in the Mesaverte section and selectively stimulate by sand-water fracking with 50,000 gallons water and 75,000 pounds sand. This unit is fully communitized as to working interest.

Approved.....
Except as follows:

2-4, 19**57**

Sincerely yours,

PAN AMERICAN PETROLEUM CORPORATION

(Company or Operator)

By.....

Position..... **Field Superintendent**

Send Communications regarding well to

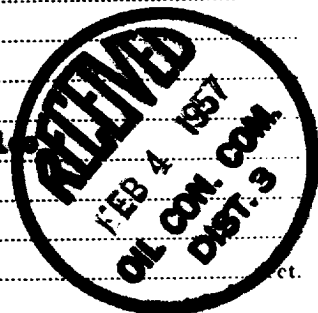
Name..... **PAN AMERICAN PETROLEUM CORPORATION**

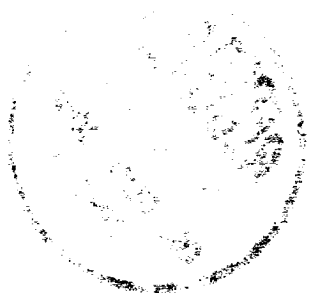
Address..... **Box 433**

Farmington, New Mexico

OIL CONSERVATION COMMISSION

By.....





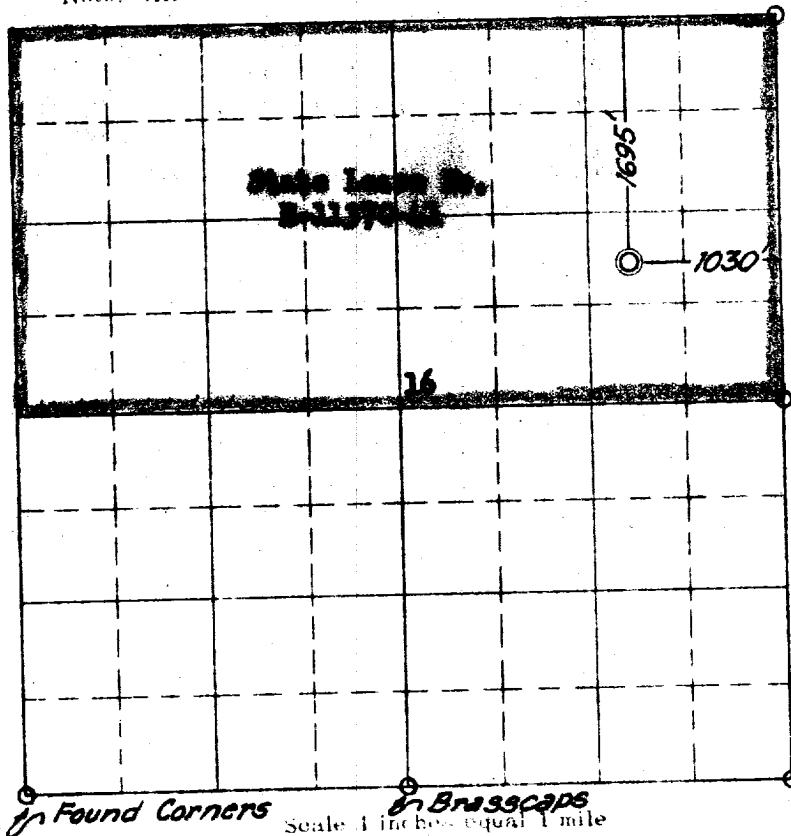
NEW MEXICO
OIL CONSERVATION COMMISSION

WELL LOCATION AND/OR GAS PRORATION PLAT

February 1, 1957

OPERATOR **PAN AMERICAN PETROLEUM CORPORATION** STATE GAS UNIT **'N'**
WELL NO. **1** SECTION **16** TOWNSHIP **31 NORTH** RANGE **12 WEST,**
LOCATED **1695** FEET FROM **the NORTH** LINE **1030** FEET FROM **the EAST** LINE
SAN JUAN COUNTY, NEW MEXICO **Alamo-Monoverde** WELL ELEVATION **to be reported later**
NAME OF PRODUCING FORMATION **Monoverde** POOL **Monoverde** DEDICATED ACREAGE **320**

Note: All distances must be from outer boundaries of section.



This section of form is to be used for gas wells only

This is to certify that the above plat was prepared from field notes of actual surveys made by me or under my supervision and that the same are true and correct to the best of my knowledge and belief.

Date Surveyed **26 JANUARY 1957**

James P. Lese
Registered Professional Engineer and/or Land Surveyor

JAMES P. LESE
No. 1463



1. Is this well a Dual Comp.

Yes _____ No **X**

2. If the answer to Question 1 is yes, are there any other dually completed wells within the dedicated acreage.

Yes _____ No **X**
Name **R. H. Bauer, Jr.**

Position **Field Engineer**
Pan American Petroleum Corporation

Representing **Box 407, Farmington, New Mexico**

Address _____

OIL CONSERVATION COMMISSION		
AZTEC DISTRICT OFFICE		
No. Copies Received		6
DISTRIBUTION		
Operator	1	
Santa Fe	1	
Proration Office		
State Land Office	1	
U. S. G. S.	2	
Transporter		
File	1	✓