

NEW MEXICO OIL CONSERVATION COMMISSION
Santa Fe, New Mexico

(Form C-101)
(Revised 7/1/52)

NOTICE OF INTENTION TO DRILL OR RECOMPLETE

Notice must be given to the District Office of the Oil Conservation Commission and approval obtained before drilling or recompletion begins. If changes in the proposed plan are considered advisable, a copy of this notice showing such changes will be returned to the sender. Submit this notice in **QUINTUPLICATE**. One copy will be returned following approval. See additional instructions in Rules and Regulations of the Commission.

Beaver Lodge Oil Corporation, 301 Mercantile Commerce Bldg., Dallas 1, Texas **10-27-53**
(Place) (Date)

OIL CONSERVATION COMMISSION
SANTA FE, NEW MEXICO

Gentlemen:

You are hereby notified that it is our intention to commence the (Drilling) (Recompletion) of a well to be known as

Beaver Lodge Oil Corporation

(Company or Operator)

W. W. McBean Well No. **1** in **W/2 Sec. 5** (Unit) The well is

located **1720** feet from the **West** line and **890** feet from the **South** line of Section **5**, T. **2N**, R. **10W**, NMPM.

(GIVE LOCATION FROM SECTION LINE) **Mosavardo Blanco** Pool, **San Juan** County

D	C	B	A
E	F	G	H
L	K	J	I
M	X N	O	P

If State Land the Oil and Gas Lease is No.

If patented land the owner is **W. W. McBean**

Address **Astec, New Mexico**

We propose to drill well with drilling equipment as follows: **Rotary to csg. point & drill in with gas**

The status of plugging bond is **Blanket**

Drilling Contractor **McConnell Drilling Co.**
Farmington, New Mexico

We intend to complete this well in the **Mosavardo Formation**
formation at an approximate depth of **5100'** feet.

CASING PROGRAM

We propose to use the following strings of Casing and to cement them as indicated:

Size of Hole	Size of Casing	Weight per Foot	New or Second Hand	Depth	Sacks Cement
13-3/4"	10-3/4" OD	32.75	New	275'	250 (Circ.)
8-3/4"	7"	23	New	4272'	420

If changes in the above plans become advisable we will notify you immediately.

ADDITIONAL INFORMATION (If recompletion give full details of proposed plan of work.)

To drill the well with rotary to the csg. point or approximately 4272', or about 6 feet below the top of the Cliff House Form. The Mosavardo section will be drilled with gas drilling equipment and this section shot with approx. 2400 qts. of nitro.

designated Unit W/2 Sec 5
Approved **10-30**, 19 **53**
Except as follows:

OIL CONSERVATION COMMISSION
By **Everett C. Powell**
Oil and Gas Inspector Dist. #3.
Title

Sincerely yours,

BEAVER LODGE OIL CORPORATION

By **Gene W. Bennett** (Company or Operator)

Position **Gene W. Bennett, Vice President**

Send Communications regarding well to

Name **Beaver Lodge Oil Corporation**

Address **301 Mercantile Commerce Bldg.**

Dallas 1, Texas

OIL CONSERVATION COMMISSION
AZTEC DISTRICT OFFICE

No. Copies Received 6

DISTRIBUTION

	No. FURNISHED	
Operator		
Santa Fe		
Proration Office		
State Land Office		
U. S. G. S.		
Transporter		
File		

REC'D OCT 26 1953

Company Beaver Lodge Oil Corporation

Lease McEwen (W/2 Sec. 5) Well No. 1

Sec. 5, T. 31 N., R. 10 W., N.M.P.M.

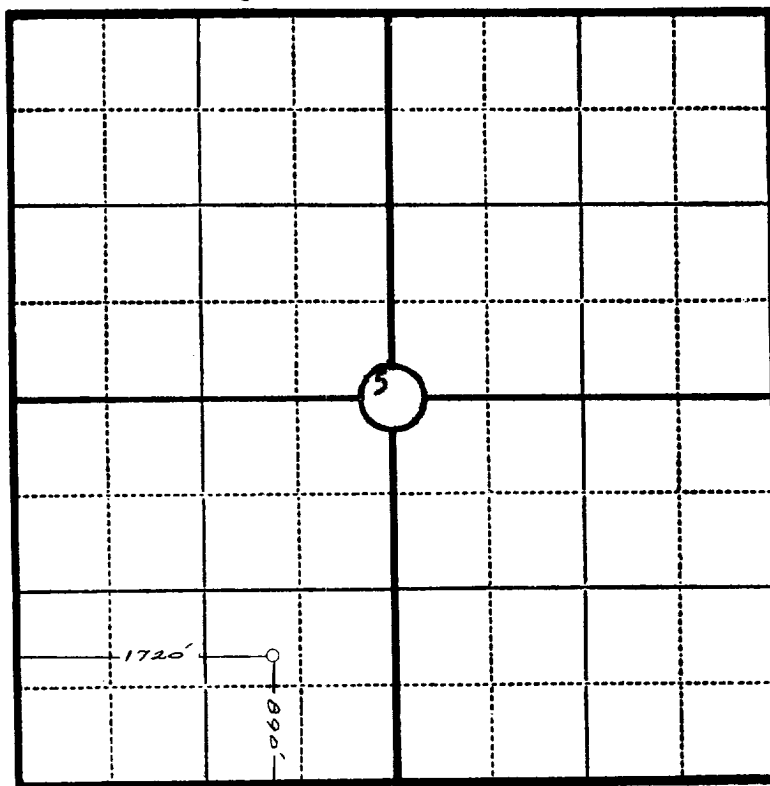
Location 890' from the South line and 1720' from the West line.

Elevation 5816 Ungraded ground.



San Juan County

New Mexico



Scale—4 inches equal 1 mile.

This is to certify that the above plat was prepared from field notes of actual surveys made by me or under my supervision and that the same are true and correct to the best of my knowledge and belief.

Seal:

James P. Leese
Registered Professional
~~Engineer~~ and Land Surveyor.

James P. Leese
N. Mex. Reg. No. 1563

Surveyed October 19, 19 53

WILDERNESS CONSERVATION COMMISSION
AZTEC DISTRICT OFFICE

No. Copies Received _____

DISTRIBUTION

	COPIES	DATE
Operator		
Santa Fe		
Proration Office		
State Land Office		
U. S. C. S.		
Inspector		

OIL CONSERVATION COMMISSION		
AZTEC DISTRICT OFFICE		
No. Copies Received 11		
DISTRIBUTION		
Operator	1	
Santa Fe	1	
Proration Office		
State Land Office		
U. S. G. S.		
Transporter		
File	1	✓