

District I
1625 N. French Dr., Hobbs, NM 88240

District II
811 South First, Artesia, NM 88210

District III
1000 Rio Brazos Rd., Aztec, NM 87410

District IV
2040 South Pacheco, Santa Fe, NM 87505

State of New Mexico
Energy, Minerals & Natural Resources Department

OIL CONSERVATION DIVISION
2040 South Pacheco
Santa Fe, NM 87505

Form C-102
Revised August 15, 2000

Submit to Appropriate District Office
State Lease - 4 Copies
Fee Lease - 3 Copies

☒ AMENDED REPORT

WELL LOCATION AND ACREAGE DEDICATION PLAT

¹ API Number 30-045-11123	² Pool Code 72319	³ Pool Name Blanco Mesa Verde
⁴ Property Code 5656	⁵ Property Name Gardner	⁶ Well Number 1
⁷ OGRID No. 12807	⁸ Operator Name Koch Exploration Company	⁹ Elevation 6588' GL

¹⁰ Surface Location

UL or lot no.	Section	Township	Range	Lot Idn	Feet from the	North/South line	Feet from the	East/West line	County
M	35	32N	9W	M	880	South	950	West	San Juan

¹¹ Bottom Hole Location If Different From Surface

UL or lot no.	Section	Township	Range	Lot Idn	Feet from the	North/South line	Feet from the	East/West line	County
M N	35	32N	9W	M N	760	South	1880	West	San Juan

¹² Dedicated Acres 299.57 361.69	¹³ Joint or Infill Y	¹⁴ Consolidation Code C	¹⁵ Order No.
---	------------------------------------	---------------------------------------	-------------------------

NO ALLOWABLE WILL BE ASSIGNED TO THIS COMPLETION UNTIL ALL INTERESTS HAVE BEEN CONSOLIDATED OR A NON-STANDARD UNIT HAS BEEN APPROVED BY THE DIVISION

¹⁶ 37.32 Ac 38.52 38.59 Ac 37.13 37.01 Ac 37.24 Ac Gardner 1SL 660'	36.83 Ac 38.88 38.10 Ac 37.64 37.13 Ac 37.36 G1 PBHL 760'	Note: Surface location is from the original certified survey dated 3-May-1954, by C.J. Finklea, NM Reg # 1302. (attached)	¹⁷ OPERATOR CERTIFICATION I hereby certify that the information contained herein is true and complete to the best of my knowledge and belief. Signature Rolf A. Omelas Printed Name Senior Engineer Title 01/11/01 Date
35			¹⁸ SURVEYOR CERTIFICATION I hereby certify that the well location shown on this plat was plotted from field notes of actual surveys made by me or under my supervision, and that the same is true and correct to the best of my belief. Date of Survey Signature and Seal of Professional Surveyor: Certificate Number

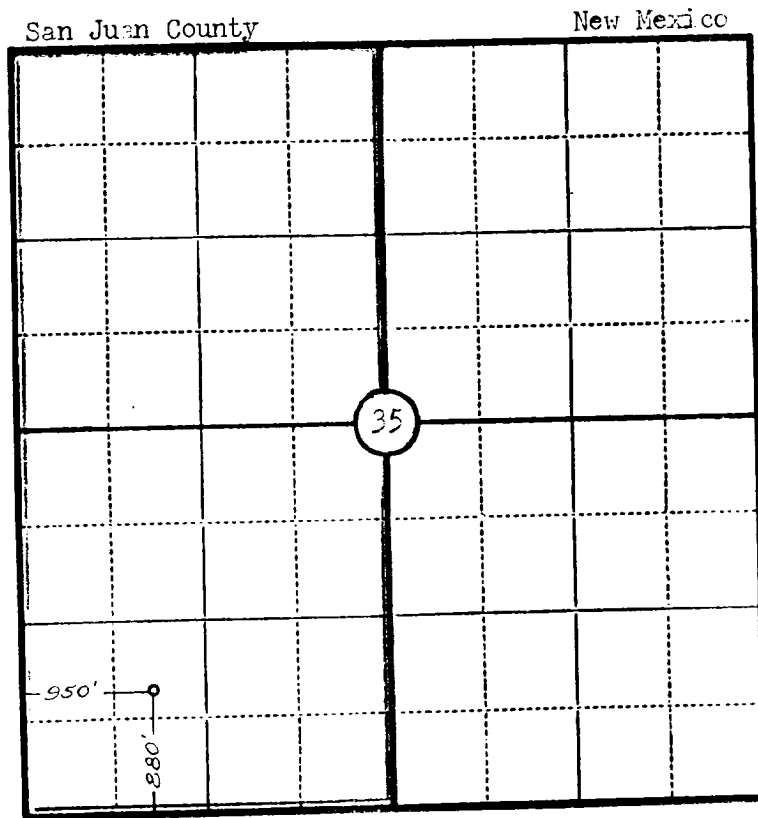
Company.....WOODRIVER OIL AND REFINING CO. INC.

Lease..... Well No.....

Sec.....35....., T.....32 N....., R.....9 W., N.M.P.M.

Location.....880' from the South line and 950' from
the West line.

Elevation.....6588 Ungraded ground.



Scale—4 inches equal 1 mile.

This is to certify that the above plat was prepared from field notes of actual surveys made by me or under my supervision and that the same are true and correct to the best of my knowledge and belief.

Seal:

Registered Professional
Engineer and Land Surveyor.

Charles J. Finklea
N. Mex. Reg. No. 1302

Surveyed 3 May 19 54