

WELL LOCATION AND ACREAGE DEDICATION PLAT

Revised 12-65

All distances must be from the outer boundaries of the Section.

Operator AMOCO PRODUCTION COMPANY			Lease Schneider Gas Com		Well No. 1
Unit Letter L	Section 28	Township 32-N	Range 10-W	County San Juan	
Actual Footage Location of Well: 1450 feet from the South line and 990 feet from the West line					
Ground Elevation 6067	Producing Formation Mesaverde		Pool Blanco Mesaverde		Dedicated Acreage: 318.43 Acres

- Outline the acreage dedicated to the subject well by colored pencil or hachure marks on the plat below.
- If more than one lease is dedicated to the well, outline each and identify the ownership thereof (both as to working interest and royalty).
- If more than one lease of different ownership is dedicated to the well, have the interests of all owners been consolidated by communitization, unitization, force-pooling, etc?

☐ Yes ☐ No If answer is "yes," type of consolidation _____

If answer is "no," list the owners and tract descriptions which have actually been consolidated. (Use reverse side of this form if necessary.) _____

No allowable will be assigned to the well until all interests have been consolidated (by communitization, unitization, forced-pooling, or otherwise) or until a non-standard unit, eliminating such interests, has been approved by the Commission.

CERTIFICATION

I hereby certify that the information contained herein is true and complete to the best of my knowledge and belief.

Original Signed by
J. ARNOLD SNELL

Name

J. Arnold Snell

Position

Area Engineer

Company

AMOCO PRODUCTION COMPANY

Date

February 1, 1973

I hereby certify that the well location shown on this plat was plotted from field notes of actual surveys made by me or under my supervision, and that the same is true and correct to the best of my knowledge and belief.

Date Surveyed

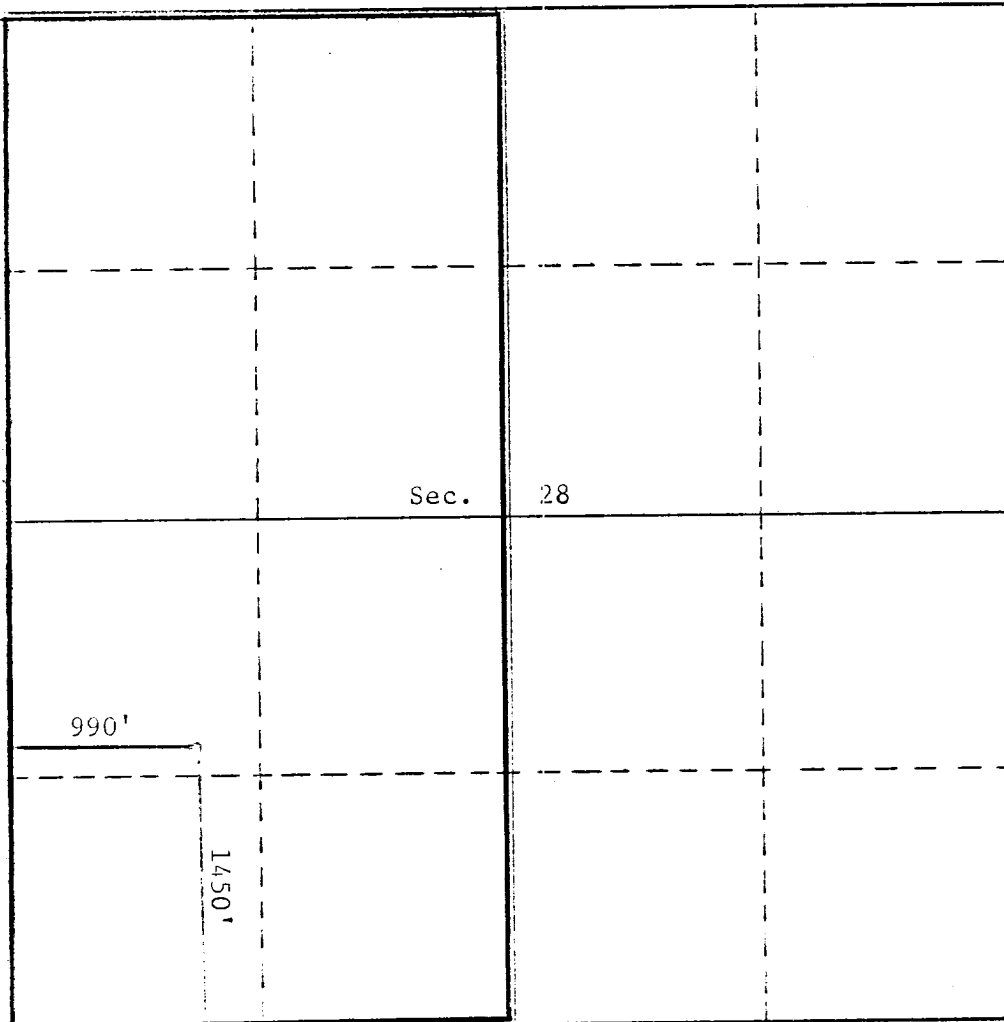
May 28, 1953

Registered Professional Engineer and/or Land Surveyor

Original Signed By
Ernest V. Echohawk

Certificate No.

1545



1450'

990'

Sec.

28