

NEW MEXICO OIL CONSERVATION COMMISSION

NOTICE OF INTENTION TO DRILL

See Rules 101 and 1104.

If changes in the proposed plan are considered advisable, a copy of this notice showing such changes will be returned to the sender. Submit this notice in triplicate. One copy will be returned following approval.

Farmington, New Mexico
PlaceJune 1, 1953
DateNotice hereby is given that it is our intention to commence the drilling of a well to be known as Stanolind

Oil and Gas Company Holmberg Gas Unit well No. 1 in NW/4, SW/4
Company or Operator Lease
of Sec. 28, T-32-N, R-10-W, N. M., P. M. Blanca Mesaverte, San Juan County.

The well is 1450 feet from 335 (S.) line and 990 feet from 335 (W.) line of the above section.

(Give location from section lines. Cross out wrong directions.)

If state land the oil and gas lease is No. _____ Assignment No. _____

If patented land the owner is Mrs. C. O. Holmberg and othersAddress Route 1, Box 7, Casagrande, Arizona (Mrs. Holmberg)

If government land the permittee is _____

Address _____

The lessee is Stanolind Oil and Gas CompanyAddress Box 591, Tulsa, OklahomaWe propose to drill well with drilling equipment as follows: Rotary tools fromsurface to proposed total depth of 5400 feet.

The status of a bond for this well in conformance with Rule 101 of the General Rules and Regulations of the Commission is as follows: On file with Commission.

We propose to use the following strings of casing and to land or cement them as indicated:

Size of Hole	Size of Casing	Weight Per Foot	New or Second Hand	Depth	Landed or Cemented	Sacks Cement
12-1/4"	9-5/8"	32.3#	New	250'	Cemented	200
8-3/4"	7"	20#	New	4700'	Cemented	300

If changes in the above plans become advisable we will notify you before cementing or landing casing. We estimate that the first productive oil or gas sand should occur at a depth of about 4700 feet.

Additional information: Designated drilling unit W/2, Section 28. Lease plat to be submitted at a later date. Ground level elevation: 6067 feet. Copies of location plats are attached. Copies of elevation survey will be forwarded later.

Approved 6 - 4, 19 53
except as follows:

Stanolind Oil and Gas Company
Company or Operator

By Henry W. SmithPosition Field Engineer

Send communications regarding well to:

Name E. R. HoltAddress Box 487, Farmington, New Mexico

OIL CONSERVATION COMMISSION,
By Emory C. Arnold
Oil and Gas Inspector Dist. #3.
Title _____

Company Stanolind Oil & Gas Company

Lease Holmberg Gas Unit Well No. 1

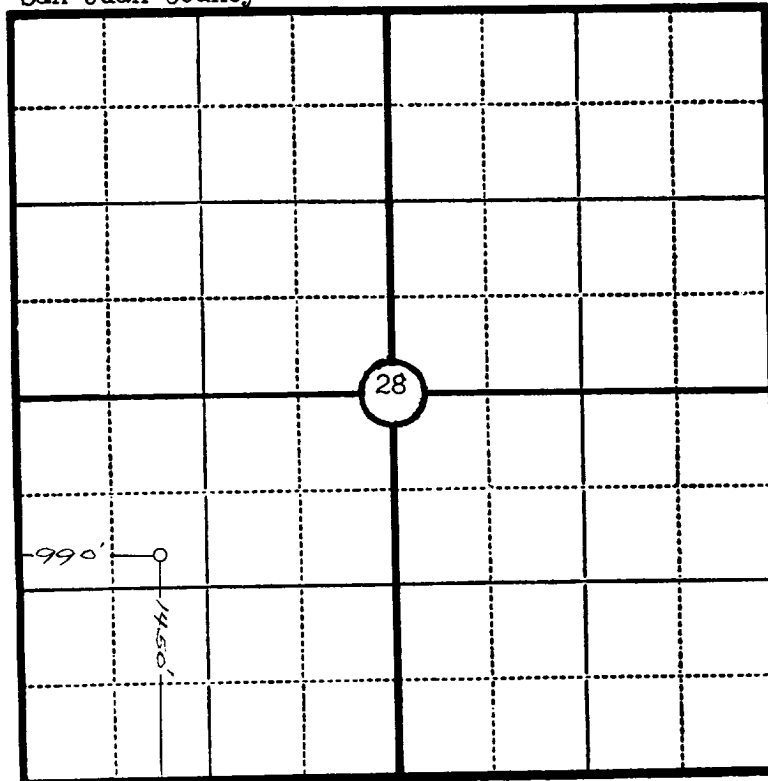
Sec. 28, T. 32 N., R. 10 W., N.M.P.M.

Location 1450' from the South line and 990' from
the West line.

Elevation 6067 Ungraded ground.

San Juan County

New Mexico



Scale—4 inches equal 1 mile.

This is to certify that the above plat was prepared from field notes of actual surveys made by me or under my supervision and that the same are true and correct to the best of my knowledge and belief.

Ernest V. Echshaw

Seal:

Registered Professional
Engineer and Land Surveyor.

Ernest V. Echshaw
N. Mex. Reg. No. 1545

Surveyed May 28, 1953.

OIL CONSERVATION COMMISSION		
AZTEC DISTRICT OFFICE		
No. Copies Received <u>6</u>		
DISTRIBUTION		
	NO. FURNISHED	
Operator	<u>2</u>	✓
Santa Fe	<u>1</u>	
Population Office		
State Land Office		
U. S. G. S.	<u>2</u>	
Transporter		
File	<u>1</u>	