

State of New Mexico  
Energy, Minerals and Natural Resources Department  
Oil Conservation Division

Sundry Notices and Reports on Wells

1. Type of Well GAS	API # (assigned by OCD) 30-045- 5. Lease Number State 6. State Oil&Gas Lease B-11127-1-NM 7. Lease Name/Unit Name EPNG Com C 8. Well No. 4 9. Pool Name or Wildcat Blanco Mesa Verde 10. Elevation:
<hr/>	
2. Name of Operator MERIDIAN OIL	
<hr/>	
3. Address & Phone No. of Operator PO Box 4289, Farmington, NM 87499 (505) 326-9700	
<hr/>	
4. Location of Well, Footage, Sec., T, R, M 843' FSL, 1516' FWL Sec. 16, T-32-N, R-10-W, NMPM, San Juan County	

Type of Submission

☒ Notice of Intent  
☐ Subsequent Report  
☐ Final Abandonment

Type of Action

<input type="checkbox"/> Abandonment	<input type="checkbox"/> Change of Plans
<input type="checkbox"/> Recompletion	<input type="checkbox"/> New Construction
<input type="checkbox"/> Plugging Back	<input type="checkbox"/> Non-Routine Fracturing
<input checked="" type="checkbox"/> Casing Repair	<input type="checkbox"/> Water Shut off
<input type="checkbox"/> Altering Casing	<input type="checkbox"/> Conversion to Injection
<input type="checkbox"/> Other -	

13. Describe Proposed or Completed Operations

It is intended to perform the casing repair and open additional Mesa Verde pay per the attached procedure and wellbore diagram.

**RECEIVED**  
FEB 23 1994  
OIL CON. DIV

SIGNATURE *Charles Gholson* (TJM) Regulatory Affairs February 21, 1994

(This space for State Use)

Approved by Original Signed by CHARLES GHOLSON Title DEPUTY OIL & GAS INSPECTOR, DIST. #3 Date

FEB 23 1994

Pertinent Data Sheet - EPNG Com C#4

Location: 843' FSL, 1516' FWL, Unit N, Section 16, T32N, R10W, San Juan County, New Mexico

Field: Blanco Mesaverde

Elevation: 6420' GL

TD: 5637'

PBTD: 5620'

Completed: 08-23-56

Spud Date: 08-15-56

DP#: 49616A

Initial Potential:

AOF: 9 698 MCFD

Lease #: B-11127-1

SICP:

Casing/Liner Record:

<u>Hole Size</u>	<u>Csg Size</u>	<u>Wt. &amp; Grade</u>	<u>Depth Set</u>	<u>Cement</u>	<u>Top/Cement</u>
	10 3/4"	32.75#	172'	125 sx	Circ/Surface
9 5/8"	7 5/8"	26.4# J-55	3530'	250 sx	TOC @ 1910' TS
6 3/4"	5 1/2"	15.5# J-55	5634'	300 sx	TOC @ 3660' TS

Tubing Record:

<u>Tbg Size</u>	<u>Wt. &amp; Grade</u>	<u>Depth Set</u>
2"	4 7 J-55	5610'

Formation Tops:

Ojo Alamo: 1989'  
Kirtland: 2018'  
Fruitland: 2781'  
Pictured Cliffs: 3236'  
Cliffhouse: 4781'  
Menefee: 5228'  
Point Lookout: 5503'

Logging Record: Temp. Survey, GRN

Stimulation:

Point Lookout:

Perf'd: 5469' - 5483', 5499' - 5513', 5537' - 5555', 5577' - 5597'.

Frac'd: w/160,000 gal. water & 50,000# sand.

IR = 62 BPM, Max. Pressure = 1800, ATP = 1650.

Cliffhouse:

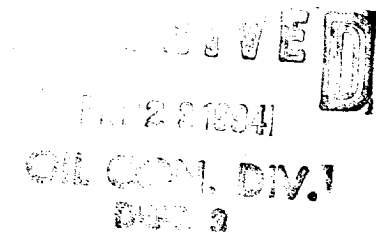
Perf'd: 5105' - 5115', 5139' - 5161'.

Frac'd: w/54,000 gal. water & 60,000# sand.

IR = 66 BPM, ATP = 1700.

Workover History: None

Production Data: CSG Press = 250#, TBG Press = 246, BH Press = 247# (Would not blow down during the test), Curr Rate = 99 MCFD, Cum Prod = 2624 MMCF, EUR = 3578 MMCF

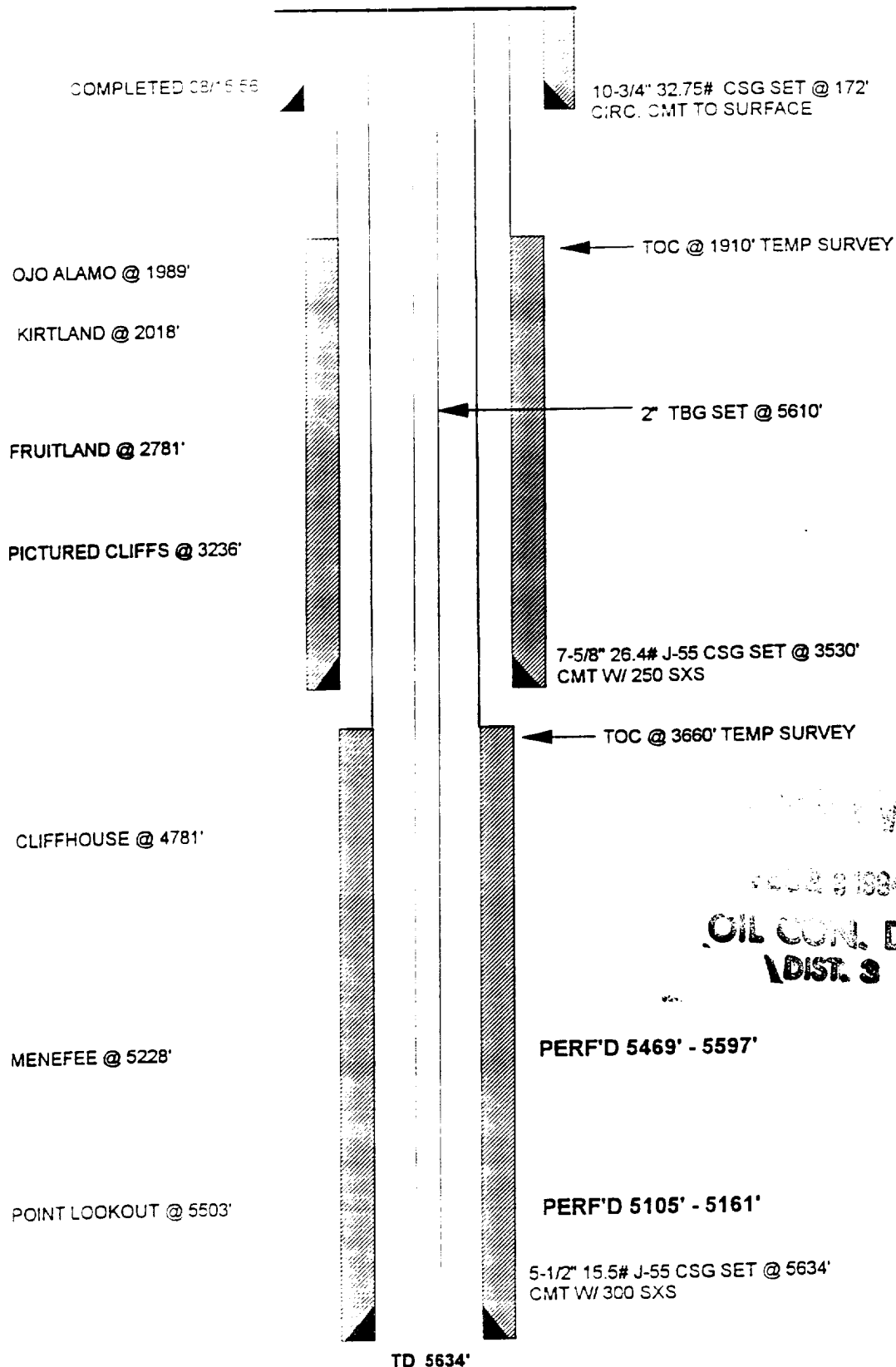


# EPNG COM C#4

CURRENT

BLANCO MESAVERDE

UNIT N. SEC 16. T32N. R10W. SAN JUAN COUNTY. NM



APPROVED  
FEB 9 1984  
OIL CON. DIV.  
DIST. 3

EPNG COM C #4  
SECTION 16 T32N R10W  
Completion Procedure

**RECEIVED**

FEB 23 1994

**OIL CON. DIV.**  
**DIST. 3**

• Contact BLM and NMOCD prior to performing work on this well

1. Comply with all BLM, MOL & NMOCD rules & regulations. MOL and RU completion rig. NU BOP with flow tee and stripping head. Test operation of rams. NU bloore line and 2-7/8" relief line. Replace all bad valves on the wellhead.
2. Take a pitot gauge. TOH w/ 2" Tbg set @ 5610'.
3. TIH w/ 5-1/2" csg scraper on 2-3/8" tbg. TOH. TIH and set a mechanical bridge plug (MBP) @ 5090'. Dump a sx of sand on top of the RBP. Load the well with 121 bbls of water and pressure test csg to 1000 psi.
4. Load hole with water. RU wireline company and run a CBL-CCL-GR from 5050' to TOC. Correlate with the attached log for perforating purposes.
5. RU Wireline Specialties Inc. Run a freepoint and chemical cut the 5-1/2" csg. Do not cut any lower than 3520'. Make sure not to cut over a collar. RD Wireline Specialties Inc.
6. TOH laying down the 5-1/2" csg; replacing the bad joints.
7. TIH w/ 7-5/8" csg scraper on 2-3/8" tbg. Set a 7-5/8" bridge plug @ 3500' or 10' above 5-1/2" casing stub. Dump a sx of sand on top of RBP. Load the well with 165 bbls. of water. Pressure test the csg. to 1000 psi.
8. RU wireline company and run CBL from 3450' - Surface.
9. Perf 2 SQ holes 50' above the TOC. TIH w/ 2-3/8" tbg. and fullbore pkr and squeeze the perf holes w/ 100% excess cmt open at surface. Circ 5 bbls of good cmt out of the bradenhead valve and then shut in valve and squeeze remaining cmt away. Over displace the cmt out of the 2-3/8" tbg by 3 bbls. Release packer and pull 2 stands. Reset packer and repressurize the squeeze. Hold pressure on cmt for 4 hrs then open at surface and check for flow. Shut well in until flow ceases. TOH w/ packer.
10. WOC for 12 hrs before drilling out. Pressure test squeeze to 500 psi. Resqueeze as necessary.
11. TIH w/ 2-3/8" tbg. and a retrieving head & PU the 7-5/8" RBP @ 3500'.
12. TIH w/ a skirted concave mill on 2-3/8" tbg. and dress off the top of the 5-1/2" csg w/ water if well will hold a column, otherwise mill off w/ air.
13. TIH w/ a Bowen 5-1/2" lead casing patch and 5-1/2" 15.5# J-55 csg. Pump 100 bbls of water prior to engaging patch to insure well remains dead during nipple up. Engage the 5-1/2" csg. stub & pressure test the csg to 1000 psi. Set csg slips, cut off csg and NU BOP.
14. If TOC is not above 3530 then perf 2 SQ hole 50' above the TOC. TIH w/ 2-3/8" tbg. and a full bore packer and squeeze the perf holes with sufficient amount of cement to overlap the 7-5/8" csg by 500'. Release packer, pull two stands, reset packer and repressurize squeeze. Check for flow after 4 hours. Release packer & TOH. Run a Temp. Survey arter 8 hours to verify the TOC.

15. WOC for 12 hrs then drill out cmt. Pressure test the squeeze to 1000 psi.
16. TIH w/ retrieving head on 2-3/8" tbg and latch onto the MBP @ 5090'. TIH and reset the MBP @ 5460'. Dump one sx of sand on top and loadhole from bottom up. 130 bbls. When hole is loaded spot 250 gals of 15% HCL on bottom.
17. RU wireline company and selectively perforate the Cliffhouse and Menefee zones. Perfs are to be @ 5438', 34', 14', 09', 03', 5396', 90', 86', 79', 60', 37', 23', 06', 02', 5289', 23', 20', 13', 5030', 4965', 15', 4900', 4813', 4792'. A total of 24 shots. 0.32" diameter perforations will be shot from 4792' to 5030'. A total of 6 shots. The remaining 18 shots will be 0.39" diameter perforations. Perforate from top down. RD wireline company.
18. PU 5-1/2" straddle packer (Isolation Liner) on workstring and TIH to 5450. RU stimulation company and pump 250 gals of 15% HCL. TOH to set Straddle Packer to overlap Cliffhouse perforations @ 5105' to 5161'. **Bottom packer element set @ 5200' and top element @ 5075' +/- 10'. TOH.**
19. PU 3-1/2" frac string and a fullbore packer. Set the packer @ 4650. Load the backside and pressure test to 1000#.
20. RU stimulation company and fracture stimulate the Cliffhouse and Menefee with the attached procedure. MAX PRESSURE = 5500#. Monitor the backside throughout the job. Preceed the job with 1000 gals of 15% HCL.
21. TOH with frac string and TIH w/ straddle packer retriever on workstring and retrieve straddle packer when well is CO as much as possible. Take a pitot gauge before retrieving the straddle packer. TOH w/ workstring and straddle packer. LD straddle packer.
22. TIH w/ retrieving head on 2-3/8" tbg and CO to MBP @ 5460'. When well is clean take a final pitot gauge and latch onto the MBP and TOH.
23. TIH w/ 2-3/8" tbg w/ seating nipple one joint above the expendable check that is on the bottom. CO to TD = 5637'. When wellbore is sufficiently clean, land tbg @ 5610'.
24. ND BOP and NU wellhead. Pump check valve. Take final pitot gauge.
25. Release rig.
26. Call wireline company to run an After Frac Gamma-Ray log.

Approve: \_\_\_\_\_

Drilling Superintendent

Recommend: \_\_\_\_\_

Regional Engineer

RECEIVED  
FEB 23 1994  
OIL CON. DEPT.  
DIST. 2

Page 3  
Cliffhouse/Menefee Pay Add  
EPNG COM C #4

Vendors:

Wireline:	Petro-Wireline	326-6669
Cement/Stimulation	Western	327-6222
Freeport/Chemical cuts	Wireline Specialties	327-7141

Contacts:

Production Engineer	Todd J. Mushovic	326-9584(W) 324-0692(H)
Reservoir Engineer	Chip E. Lane	326-9740 (W)
Frac Consultant	Mark Byars	320-0349(M) 327-0096(H) 327-8470(Pager)

TJM



RECEIVED

State of New Mexico  
Energy, Minerals and Natural Resources Department  
Oil Conservation Division

4782-5438

Sundry Notices and Reports on Wells

<b>1. Type of Well</b> GAS	<b>API # (assigned by OCD)</b>
<b>2. Name of Operator</b> MERIDIAN OIL	<b>5. Lease Number</b> State
<b>3. Address &amp; Phone No. of Operator</b> PO Box 4289, Farmington, NM 87499 (505) 326-9700	<b>6. State Oil&amp;Gas Lease</b> B-11127-1-NM
<b>4. Location of Well, Footage, Sec., T, R, M</b> 843'FSL, 1516'FWL Sec.16, T-32-N, R-10-W, NMPM, San Juan County	<b>7. Lease Name/Unit Name</b> EPNG Com C
	<b>8. Well No.</b> 4
	<b>9. Pool Name or Wildcat</b> Blanco Mesa Verde
	<b>10. Elevation:</b>

**Type of Submission**

**Type of Action**

<input type="checkbox"/> Notice of Intent	<input type="checkbox"/> Abandonment	<input type="checkbox"/> Change of Plans
<input checked="" type="checkbox"/> Subsequent Report	<input type="checkbox"/> Recompletion	<input type="checkbox"/> New Construction
<input type="checkbox"/> Final Abandonment	<input checked="" type="checkbox"/> Plugging Back	<input type="checkbox"/> Non-Routine Fracturing
	<input checked="" type="checkbox"/> Casing Repair	<input type="checkbox"/> Water Shut off
	<input type="checkbox"/> Altering Casing	<input type="checkbox"/> Conversion to Injectio
	<input type="checkbox"/> Other -	

**13. Describe Proposed or Completed Operations**

03-01-94 MOL&RU. ND WH. NU BOP. TOO H w/parted tbq. TIH w/overshot, latch onto fish, tbq parted again. TIH, chem cut tbq @ 5505'.

03-02-94 Ran free point, chem cut tbq @ 5512'. TOO H w/fish. Left 98' tbq in hole. TIH, washover fish. TIH w/overshot, latch onto fish. TOO H w/fish. Ran scraper to 5620'.

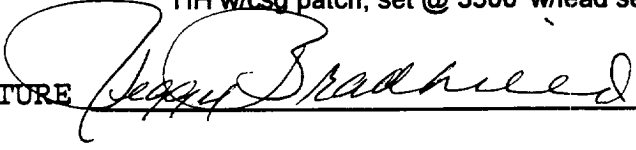
03-03-94 Set RBP @ 5460'. Load hole w/wtr. Ran CBL across Menefee, 100% bond. Set RPB @ 5090'. Ran CBL to TOC @ 4450'. TIH, spear csg, will not release. Free point 5 1/2" csg to 3530'. Chem cut csg @ 3500'. LD 5 1/2" csg. Ran scraper to 3500'.

03-04-94 Set RBP @ 3475'. Load hole w/wtr. PT 1000#. Ran CBL 3450-0'. TOC @ 1750'. Shot 2 holes @ 1740'. Set FBP @ 1645'. Mix 75 sx lead light cmt, pressure to 1600#, switch to tail. After 2 bbl tail Class "B" w/2% calcium chloride cmt, pressure to 1800 psi. Cut cmt. 2 bbl into displacement, pressure to 2000#. No flowing back. Reverse out 7 bbl cmt. Reset pkr @ 1340'. WOC.

03-05-94 Drl cmt 1640-1745'. PT holes @ 1740' 1000#/15 min, ok. Ran CBL 0-2000'. Shot 2 holes @ 1490'. Set FBP @ 1350'. Squeeze w/50 sx lite cmt and 200 sx Class "B" w/2% calcium chloride. Displace w/9 BW. Shot 2 holes @ 340'. Set FBP @ 122'. Pump 100 sx lite cmt and 100 sx Class "B" w/2% calcium chloirde, circ 22 bbl cmt to pit. WOC.

03-06-94 Drl cmt 220-345'. PT holes @ 340' 1000#/15 min, ok. TIH, tag cmt @ 1390'. Drl cmt 1390-1495'. PT holes @ 1490' 1000#/15 min, ok. Ran scraper. Circ sand off RBP. TOO H. Drl off top of 5 1/2" csg stub @ 3500'. TIH w/csg patch, set @ 3500' w/lead seal. PT 1000#/15 min, ok.

(Cont'd on back)

SIGNATURE  Regulatory Affairs March 14, 1994

(This space for State Use)

Approved by Original Signed by CHARLES G. WILSON

Title DEPUTY OIL & GAS INSPECTOR, DIST. #3 Date MAR 15 1994

RECEIVED

MAR 15 1994

OIL CON. DIV  
DIST. 3

EPNG Com C #4

Page Two

- 03-07-94 Set slips, cut off csg. Shot 2 holes @ 4400'. Est circ. Set FBP @ 4195'. Cmt w/150 sx Class "B" w/2% calcium chloride, Squeeze locked up. Reverse out. TOOH w/pkr full of cmt. WOC. Dri cmt 4199-4405'. Circ clean. PT squeeze holes @ 4400' 1000#/15 min, ok. Ran CBL.
- 03-08-94 TOC @ 4200'. Shot 2 holes @ 4140'. Set FBP @ 3904'. Est rate. Pump 200 sx Class "B" w/2% calcium chloride, reverse out 12 bbl cmt. WOC. Dri cmt 3905-4145'. PT holes @ 4140' 1000#/15 min, ok.
- 03-09-94 Ran CBL. TOC @ 3480'. CO to 5090'. TOOH w/RBP. CO to 5460'. Spot 250 gal acid. CO to 5460'. Spot 250 gal acid. Perf Menefee w/2 spf 4792-5030', and 5213-5438'. Set frac liner.
- 03-10-94 Set pkr @ 4666'. Frac w/168,0003 20/40 sand and gel wtr. Blow well.
- 03-11-94 Blow well. TOOH w/frac liner.
- 03-12-/13 Blow well and CO.
- 03-14-94 Ran 178 jts 2 3/8", 4.7#, J-55 8rd EUE tbg landed @ 5593'. F nipple @ 5560'. ND BOP. NU WH. Released rig.