

Submit 3 Copies  
to Appropriate  
District Office

State of New Mexico  
Energy, Minerals and Natural Resources Department

Form C-103  
Revised 1-1-89

DISTRICT I  
P.O. Box 1980, Hobbs, NM 88240

DISTRICT II  
P.O. Drawer DD, Artesia, NM 88210

DISTRICT III  
1000 Rio Brazos Rd., Aztec, NM 87410

**OIL CONSERVATION DIVISION**  
P.O. Box 2088  
Santa Fe, New Mexico 87504-2088

WELL API NO. 3004511403
5. Indicate Type of Lease STATE <input type="checkbox"/> FEE <input checked="" type="checkbox"/>
6. State Oil & Gas Lease No.
7. Lease Name or Unit Agreement Name  Decker LS
8. Well No. #1
9. Pool name or Wildcat Blanco Mesaverde
10. Elevation (Show whether DF, RKB, RT, GR, etc.)

**SUNDRY NOTICES AND REPORTS ON WELLS**  
(DO NOT USE THIS FORM FOR PROPOSALS TO DRILL OR TO DEEPEN OR PLUG BACK TO A DIFFERENT RESERVOIR. USE "APPLICATION FOR PERMIT" (FORM C-101) FOR SUCH PROPOSALS.)

1. Type of Well: OIL WELL <input type="checkbox"/> GAS WELL <input checked="" type="checkbox"/> OTHER	2. Name of Operator Amoco Production Company Gail M. Jefferson, Rm 1295C
3. Address of Operator P. O. Box 800, Denver, Colo. 80201 (303) 830-6157	4. Well Location Unit Letter M : 1014' Feet From The South Line and 959' Feet From The West Line Section 17 Township 32N Range 10W NMPM San Juan County

10. Elevation (Show whether DF, RKB, RT, GR, etc.)

11.

Check Appropriate Box to Indicate Nature of Notice, Report, or Other Data

**NOTICE OF INTENTION TO:**

PERFORM REMEDIAL WORK ☐ PLUG AND ABANDON ☐  
TEMPORARILY ABANDON ☐ CHANGE PLANS ☐  
PULL OR ALTER CASING ☐  
OTHER: Running a Liner & Reperf ☐

**SUBSEQUENT REPORT OF:**

REMEDIAL WORK ☐ ALTERING CASING ☐  
COMMENCE DRILLING OPNS. ☐ PLUG AND ABANDONMENT ☐  
CASING TEST AND CEMENT JOB ☐  
OTHER: ☐

12. Describe Proposed or Completed Operations (Clearly state all pertinent details, and give pertinent dates, including estimated date of starting any proposed work) SEE RULE 1103.

Amoco Production Company request permission to perform a workover on the above referenced well by running a liner and reperfing per the attached procedures.

If you have any technical questions please contact Khanh Vu at (303) 830-4920 or Gail Jefferson for any administrative concerns.

**RECEIVED**  
FEB 20 1996  
**OIL CON. DIV**  
DIST. 3

I hereby certify that the information above is true and complete to the best of my knowledge and belief.

SIGNATURE Gail M. Jefferson TITLE Sr. Admin. Staff Asst. DATE 2/19/96  
TYPE OR PRINT NAME \_\_\_\_\_ TELEPHONE NO. \_\_\_\_\_

(This space for State Use)

APPROVED BY Original Signed by FRANK T. CHAVEZ TITLE SUPERVISOR DISTRICT # 3 DATE FEB 20 1996  
CONDITIONS OF APPROVAL, IF ANY:

February 13, 1996

***Decker LS #1***

1,014' FSL, 959' FWL Sect. 17, 32N, 10W

San Juan County, New Mexico

Workover Procedures

**PREPARATION**

**NOTE--5.500" casing liner**

1. MIRUSU complete with 3.5 power swivel, circulating equipment and rental string of 2.375" drill pipe or Hydril PH-6 tubing and 6-3.750" drill collars. Ensure that the drill pipe and collars have recent inspection papers.
2. Blow down well, ND tree, NUBOPS and pull 2.375" tubing. (Landed at 5,392'-- May be stuck) If stuck, obtain fishing tools, backoff and fish with drill pipe. Lay down and inspect tubing.
3. Pick up drill pipe and set CIBP at 4,650'.
4. Test casing to 750 psi. If test positive, proceed to step 5. If casing leaks, pick up RTTS packer and isolate hole(s).
5. Run CBL from 4,650' to top of cement in 7.000" intermediate casing (2,505' by TS). Check for cement below surface pipe at 168' to see if previous operators pumped down bradenhead. Remainder of bradenhead work will depend on CBL but will probably require the following steps. (Discuss with the BLM and State as necessary)
6. Perforate 4 JSPF at 2,450' (top of Fruitland) unless casing leaks found near this depth.
7. Set cement retainer at 2,000' and attempt to establish circulation to bradenhead. If circulation obtained, mix and pump sufficient cement to circulate. Use 50:50 Pozmix containing 0.4 % Halad 344, 0.25 #/sx flocele, and 5-10 #/sx Gilsonite and CAL-SEAL as recommended by Howco and proceed to step #9. If no circulation obtained, squeeze holes with 100 sx of the same and proceed to step #8.
8. Perforate 4 JSPF at 1,500' (above Ojo Alamo), set retainer at 1,400' and repeat step #7.
9. WOC. NDBOPS, install casing spool above bradenhead to receive the 3.500" long string. NUBOPS.
10. Pick up 4.750" button bit with premium bearings, 6-3.750" drill collars on the drill pipe (tubing) and drill out cement and retainers. Test each perforated interval to 750 psi after drilling and re-squeeze with 100 sx cement if necessary.
11. MIRU air package, dry up hole and drill out the CIBP. Clean out the open hole from 4,723' to 5,400' with air. Drill ahead from 5,400' to 5,475'.

***Decker LS #1***

page 2

- 12.. Lay down the 2.375" drill string, run 3.500" flush joint casing using a marker joint at 1,000' from bottom. Utilize stand-off bands (3.625" x 4.625") every second joint on the lower 20 joints and every third joint thereafter up to 100' inside the existing 5.500" casing.
13. Cement w/190 sx (60% excess) 50:50 Pozmix containing 2 % gel, 6 % salt, 0.4 % Halad 344, 0.25 #/sx floccle, 5 #/sx Gilsonite. Pump 20 bbls water ahead, mix and pump cement at 13.5-14.0 ppg and displace with water. Utilize two wiper plugs (discuss w/ Howco--attempt to ensure that the cement is completely wiped from the casing to allow a rigless completion). This single stage job should bring cement at least 500' inside the 5.500" casing. Reciprocate the casing throughout the cement job, passing joints. Land casing in full tension. Run temperature survey 10-12 hours after bumping plug.

14. RDMOSU.



brad

02/13/96 10:56 AM

# Amoco Production Company

## ENGINEERING CHART

Sheet No.

Of

File

Appn

Date

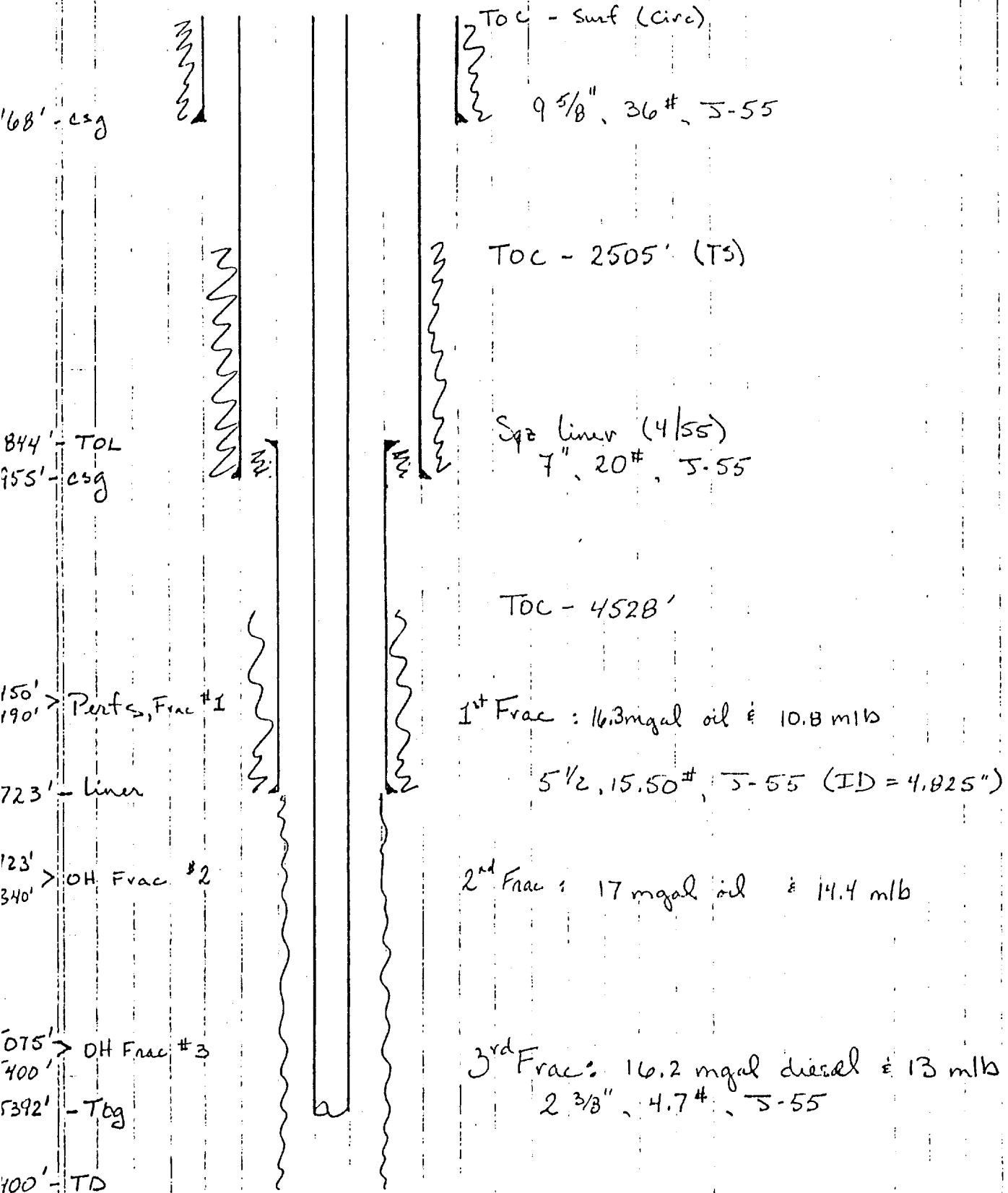
By

SUBJECT

Decker LS 1

spud 3/55

KQV



# AMOCO PRODUCTION COMPANY DRILLING AND COMPLETION PROGRAM

File No.: dekaris1.xdw  
Date: 2/14/96

FINAL COPY

Lease: Decker LS Well No. #1  
County: San Juan, New Mexico Location: 1,014' FSL, 959' FWL Sect. 17, 32N, 10W  
Former name: None Field: Basin Mesaverde 32 10

<b>OBJECTIVE:</b> Further exploit the Mesaverde.			
<b>METHOD OF DRILLING</b>		<b>APPROXIMATE DEPTHS OF GEOLOGICAL MARKER</b>	
<b>TYPE OF TOOLS</b>	<b>DEPTH OF DRILLING</b>	Actual GL-----Estimated KB 6,142 6,154	
Rotary	5,400 - TD		
		<b>Marker</b>	<b>True Vert Depth</b>
<b>SPECIAL SURVEYS</b>			<b>Msd. Depth (ft.)</b>
<b>TYPE</b>	<b>DEPTH</b>		<b>SS Elev. (ft.)</b>
NONE		Ojo Alamo	2,090 4,064
		Kirtland	2,280 3,874
		Fruitland*	2,510 3,644
		Pictured Cliffs*	2,888 3,266
		Lewis Shale	2,955 3,199
		Cliff House*	4,770 1,384
		Menefee	4,838 1,316
		Point Lookout	5,164 990
		Mancos	5,374 780
		KOP	NONE
<b>REMARKS:</b>			
Logs run as considered necessary.			
None anticipated			
		<b>TOTAL DEPTH</b> 5,475 5,475	
		#Probable completion * Possible pay	
		<b>OJO ALAMO IS POSSIBLE USEABLE WATER</b>	
<b>SPECIAL TESTS</b>		<b>DRILL CUTTING SAMPLES</b>	
<b>TYPE</b>	<b>DEPTH INTERVAL, ETC</b>	<b>FREQUENCY</b>	<b>DEPTH</b>
None		As penetration rate pe ICP TD	Geolograph 0 - TD
<b>Remarks:</b>		<b>Remarks:</b>	
		Mud Logging Program: None	
		Coring Program: None	

## MUD PROGRAM:

Approx. Interval	Type Mud	Weight, #/gal	Vis, sec/qt.	W/L, cc's/30 min.
------------------	----------	---------------	--------------	-------------------

0---SCP None--Recompletion only  
SCP---ICP None--Recompletion only  
ICP---TD Air/Mist

## REMARKS:

An air/mist circulating medium will be used as necessary to remove sloughing and drill from present total depth of 5,400' to 5,475'.

## CASING PROGRAM:

Casing String	Estimated Depth	Casing Size	Hole Size	Landing Point, Cement, Etc
---------------	-----------------	-------------	-----------	----------------------------

Conductor  
Surface In place  
Intermediate In place  
Production 5,475 3 1/2" (2 7/8") 4 3/4" 1

## Remarks:

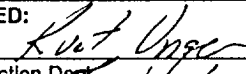
1. Production casing will be cemented back up into the 5.500" intermediate.

## GENERAL REMARKS:

Well was drilled and completed in 1955. Will pull tubing, clean out the existing 4.750" open hole from 4,723' to 5,400' and drill rathole to 5,475'. Production casing (2.875" or 3.500" flush joint) will be run from TD back to surface and cemented. Cement on the 5.500" liner and 7.000" intermediate casing will be checked with a CBL and repaired prior to cleanout. Southern Rockies Engineering staff to design completion program.

Form 46 Reviewed by:

Logging program reviewed by:

<b>PREPARED BY:</b> Vu/bilyeu 2/14/96 Form 46 7-84bw	<b>APPROVED:</b>  For Production Dept. 2/14/96	<b>APPROVED:</b>  For Exploration Dept.
--	---	---