

State of New Mexico
Energy, Minerals and Natural Resources Department
Oil Conservation Division

Sundry Notices and Reports on Wells

1. Type of Well
GAS

2. Name of Operator

**BURLINGTON
RESOURCES**

OIL & GAS COMPANY

3. Address & Phone No. of Operator

PO Box 4289, Farmington, NM 87499 (505) 326-9700

4. Location of Well, Footage, Sec., T, R, M

1650' FNL, 1600' FEL, Sec. 16, T-32-N, R-10-W, NMPM, San Juan County

API # (assigned by OCD)

30-045-11454

5. Lease Number

6. State Oil&Gas Lease #

E-3150-1

7. Lease Name/Unit Name

Burroughs Com A

8. Well No.

2

9. Pool Name or Wildcat

Blanco Mesaverde

10. Elevation:

Type of Submission

☒ Notice of Intent

☐ Subsequent Report

☐ Final Abandonment

Type of Action

☐ Abandonment

☐ Recompletion

☐ Plugging Back

☐ Casing Repair

☐ Altering Casing

☒ Other - Pay add

☐ Change of Plans

☐ New Construction

☐ Non-Routine Fracturing

☐ Water Shut off

☐ Conversion to Injection

13. Describe Proposed or Completed Operations

It is intended to add pay to the Mesaverde formation of the subject well according to the attached procedure and wellbore diagram.

RECEIVED
DEC 31 1997
OIL CON. DIV.
DIST. 3

SIGNATURE



(SCOpps) Regulatory Administrator December 29, 1997

(This space for State Use)

Approved by

ORIGINAL SIGNED BY ERNIE BUSCH

Title

DEPUTY OIL & GAS INSPECTOR, DIST. #3

Date

JAN - 5 1998

Burroughs Com A #2
Mesa Verde Payadd Procedure
G 16 32N 10W
San Juan County, NM
Latitude: 36 Deg., 59.25 Min
Longitude: 107 Deg., 52.99 Min.

Summary:

The subject well is a 1998 Mesa Verde payadd in 7-5/8" casing and a 5-1/2" liner section. This well was originally drilled in 1958 and was completed in the Point Lookout and Menefee interval. The Point Lookout interval was perforated and stimulated w/ approximately 55,000 lbs. total sand and 50,000 gal. total slickwater. The Menefee interval was perforated and stimulated w/ approximately 30,000 lb.s total sand and 30,000 gal. total slickwater and placed on production. The subject well will capture the bypassed Cliffhouse and Menefee pay and will be perforated and fracture stimulated in one (1) stage with 92,137 gal of 20# crossed-linked gel and 165,000# 20/40 mesh sand. The well will then be cleaned-up, tubing landed in the Mesa Verde and placed on production.

- Comply to all NMOCD, BLM and BR regulations. Conduct daily safety meetings for all personnel on location. Notify BR regulatory (Peggy Bradfield 326-9727) and the appropriate Regulatory Agency prior to pumping any cement job and after CBL is run. If an unplanned cement job is required, approval is required before the job can be pumped. If verbal approval is obtained, document the approval in Dims. Allow adequate notice prior to the pump time for the Agency to witness the cementing operation.
 - Inspect location and wellhead and install rig anchors prior to rig move.
 - Construct blow pit.
1. MOL, hold safety meeting and RU completion rig. Insure all safety equipment is strategically located and functioning properly. NU relief lines to blow pit. Set eight (8) 400 BBL frac tanks and fill w/ 2% KCL. Blow well down and kill well with 2% KCL water as necessary. ND wellhead and NU 7-1/16" 3M BOP, stripping head and blooie line. Test BOP.
 2. TOOH w/ approximately 180 jts. 2-3/8" Mesa Verde tubing set at +/- 5655' and stand back. Inspect tubing and replace bad tubing as necessary.
 3. If tbg. appears in good condition, RU wireline company and RIH w/ 5-1/2" gauge ring. If tbg. is scaled up, proceed to step #4.
 4. PU 4-3/4" bit on 2-3/8" 4.7# J-55 workstring and CO to PBTD @ 5700'. TOOH and lay down bit. Stand back workstring.
 5. RU wireline. RIH and wireline set CIBP @ 5300'. Load hole w/ 2% KCL (205 bbls). Pressure up csg. to 1000 psi w/ rig pump and run GR\CCL\CBL under pressure from 5290' to bottom of surface csg. @ 250'.** Send logs to office immediately and perforations and setting depths will be supplied for the Cliffhouse and Menefee interval only. A squeeze procedure will be provided if TOC does not cover the Fruitland and Ojo Alamo interval (refer to step #13). Release pressure off csg. POOH w/ CBL. RIH w/ CNL and log from 5290' to 4290'. POOH w/ CNL. RD wireline company.
- ** NOTE: Tie into liner top @ 3370'
6. RU wireline company to perforate approximately 26 holes with 3-1/8" HSC gun w/ 17 gram charges, 13" penetration and 0.29 perf diameter. Perforate top down in the Menefee and Cliffhouse interval (+/- 5290' - +/- 4765'). Perforations will be provided after reviewing logs. RD wireline company.

**Burroughs Com A #2
Mesa Verde Payadd Procedure
G 16 32N 10W
San Juan County, NM
Latitude: 36 Deg., 59.25 Min
Longitude: 107 Deg., 52.99 Min.**

7. TIH w/ 5-1/2" fullbore pkr., 45 jts. 2-7/8" EUE 8rd 6.5# N-80, 2-7/8" EUE 8rd X 3-1/2" 8rd N-80 changeover swage and approximately 125 jts. 3-1/2" 9.3# N-80 frac string and set @ 5280'. Pressure test CIBP set @ 5300' to **3000 psi**. Release pkr. and TOOH w/ approximately 19 jts. 3-1/2" 9.3# N-80 frac string and reset pkr. @ 4600'. RU stimulation company. Hold pre-job safety meeting. Load annulus before breakdown w/ 140 bbl. and keep loaded during frac. Pressure annulus to **500 psi** and monitor annulus pressure during breakdown and frac. Pressure test surface lines to **8500 psi**. Breakdown perforations @ 4 BPM w/ 2% KCL. After perforations breakdown, pump 1000 gal. 15% HCL acid.** Pump acid @ 20-25 BPM to ensure all perforations are open. Breakdown to maximum bottomhole pressure of **3800 psi**. Record breakdown pressure and ISIP. Prepare to fracture stimulate. Maximum surface treating pressure is **7500 psi**.

** All acid to contain the following additives/1000 gal.:

2 gal.	CI-22	corrosion inhibitor
5 gal	Ferrotrol-300L	iron control
1 gal	Flo-back 20	surfactant
0.5 gal	Clay Master-5C	clay control

8. Fracture stimulate w/ 2% KCL base frac fluid 20# crossed-linked gel in 1.0 to 4.0 ppg stages @ 35 BPM constant downhole rate with 92,137 gal. of 20# crossed-linked gel and 165,000# 20/40 mesh sand. When sand concentration begins to drop, call flush. Flush to top perf @ +/- 4765**. Refer to frac schedule enclosed.

** After 75% of flush volume has been pumped (1600 gal.), cut rate to 10 BPM. If well goes on a vacuum, shut down. Otherwise, flush to top perf @ +/- 4765'.

9. Shut in frac valve and record ISIP, 5, 10 and 15 shut-in pressure. RD stimulation company.
10. After well cleans up and pressures allow, release pkr. and TOOH laying down approximately 106 jts. 3-1/2" 9.3# N-80, 2-7/8" EUE 8rd X 3-1/2" 8rd N-80 changeover swage, 45 jts. 2-7/8" EUE 8rd 6.5# N-80 frac string and 5-1/2" fullbore pkr.
11. TIH w/ notched collar and 2-3/8" 4.7# J-55 workstring and clean up to CIBP @ +/- 5300' with air/mist. When well is sufficiently clean (less than 1 BWPH), gauge the Menefee and Cliffhouse interval for one (1) hour. TOOH w/ notched collar and 2-3/8" workstring. Lay down notched collar. Obtain an accurate pitot gauge for the Menefee and Cliffhouse interval.
12. TIH w/ 4-3/4" bit on 2-3/8" workstring and mill up CIBP @ +/- 5300'

****NOTE:** If tbg. was scaled-up, as indicated in step #2 of procedure, acid wash the existing Menefee and Point Lookout perforations w/ treatment specified by service company.

13. Perform squeeze procedure as needed to ensure TOC covers Fruitland and Ojo Alamo.
14. TIH with one joint of 2-3/8", 4.7#, J-55 tubing w/ expendable check, magnetic fluid conditioner tool, seating nipple, then the remaining 2-3/8" production tubing. Land tubing @ 5600'.
15. ND BOP's, NU single tubing hanger wellhead. Pump off expendable check. Obtain final pitot up tubing. If well will not flow on it's own, make swab run to seating nipple. If swab run is not necessary, run a broach on slickline to ensure that the tubing is clear. Set bumper spring in seating nipple and drop plunger. RD and MOL. Place well on plunger lift type production.

Burroughs Com A #2
Mesa Verde Payadd Procedure
G 16 32N 10W
San Juan County, NM
Latitude: 36 Deg., 59.25 Min
Longitude: 107 Deg., 52.99 Min.

Approve:  12/10/97
Team Leader

Approve:  12/18/97
Drilling Superintendent

Recommend:  12/10/97
Production Engineer

VENDORS:

Wireline:	Schlumberger	325-5006
Stimulation:	Halliburton	325-3575
Packer:	Arrow Completion Systems	326-5141
Bridge Plug:	Arrow Completion Systems	326-5141
Magnetic Fluid Conditioner Tool:	Mag well	1-800-488-1278
Plunger lift:	PCS	326-4239

Steve Campbell	Home 325-8218	Office 326-9546	Pager 564-1902
Bob Goodwin	Home 599-0992	Office 326-9713	Pager 564-7096
Jennifer Dobson	Home 564-3244	Office 326-9708	Pager 324-2461
Mike Pippin	Home 327-4573	Office 326-9848	Pager 324-2559

Stimulation Procedure
Burlington Resources Oil and Gas CO.

General Information

Well Name:	Burroughs Com A #2
Location:	G 16 32N 10W
Formation:	Cliffhouse and Menefee
Stimulators:	Halliburton
Logging:	Protechnics
Fluid:	20# Crossed-linked
Notes:	w/ Sand Wedge

Well Configuration

Casing:	5-1/2" 15.5#	600 FT
Tubing:	2-7/8" 6.5# N-80	1,395 FT
Tubing:	3-1/2" 9.3# N-80	3305 FT
Cap:	0.0238 0.00579 0.00870	
PBTD	5300 ft	Vol. to: (gals)
Top Perf:	4765 ft	PBTD: 2,147
Bot Perf:	5290 ft	Top Perf: 1,612
Midpoint:	5028 ft	Botm perf: 2,137
Perforations		
	1 spf	0.29 " holes
	25 holes	17 " penetration

Formation and Stimulation Data

Max Treating Pressure	7500 psi
Frac Gradient:	0.5 psi/ft
BH Temp:	150 deg. F
Antic. Treating Rate:	35 BPM
Antic. BH Treating Pres:	2,514 psi
Antic. Surf Treating Pres:	6,525 psi
Percent Pad:	28%
Net Pay:	352 ft
lb prop/net ft pay:	469 lb/ft
Job Duration:	67.8 min
Perf friction	812 psi
Total friction(Incl. PF)	6,189 psi

Stimulation Schedule

Sand Data						Fluid Data				Rate and Time Data			Comments
Tag	Stage	Mesh	ppg	lbs	lbs	Stage Fluid	Cum Fluid	Stage Slurry	Cum Slurry	Slurry Rate	Stage Time	Cum Time	
	Pad	N/A	0.0	0	0	25,000	25,000	25,000	25,000	35.0	17.0	17.0	
No	2	20/40	1.0	15,000	15,000	15,000	40,000	15,684	40,684	35.0	10.7	27.7	
No	3	20/40	2.0	30,000	45,000	15,000	55,000	16,368	57,052	35.0	11.1	38.8	
No	4	20/40	3.0	60,000	105,000	20,000	75,000	22,736	79,788	35.0	15.5	54.3	
No	5	20/40	4.0	60,000	165,000	15,000	90,000	17,736	97,524	35.0	12.1	66.3	
	Flush	N/A	0.0	0	165,000	2,137	92,137	2,137	99,661	35.0	1.5	67.8	2% KCL Water
Total					lb/ft	Total	Total	Total	Total	Ave.	Total		
					165,000	469	92,137	99,661		35.0	67.8		

Volumes and Additives

Water Volume=	92,137	treat +	4,607	excess =	96,743 gallons (BR)
Water Volume=	2,194	treat +	110	excess =	2,303 bbls (BR)
Fluid Volume:	2,303 bbl designed treating volume				
1/40 Arizona Sand:	165,000 lbs				
Fluid:	0.18# BE-6 (Biocide)				
	2% KCL water (filtered if necessary).				
	5 gal/M LGC-8 (Liquid Gel concentrate)				
	2 gal/M BC-140 (Buffer & Crosslinker)				
	1 gal/M Lo Surf 300 (Surfactant)				
	0.25 - 1.0 #/M SP (Breaker)				
	0.12 gal/sx (Sand Wedge)				
Radioactive Tagging as follows:					
4 mCi Ir-192, 0.3 mCi Sb-124, 0.3 mCi Sc-46					

Equipment

Tanks:	7.0	x 400 bbl frac tanks(supplied by BR).
Filled w/	2,303	bbls 2% KCl water (supplied by BR).
Sand Chief		
Blender.		
Fluid Pumps as required.		
<i>Rdc 12/18/97</i>		

Comments and Special Instructions

MAXIMUM ALLOWABLE BOTTOMHOLE TREATING PRESSURE IS 3800 PSI.

see down casing via frac valve.

hold safety meeting with everyone on location before pressure testing surface lines.

pressure test surface lines to 8500 psi

Production Engineer: Steve Campbell

(Work) 326-9546 (Home) 325-8218 (Pager) 564-1902

Burroughs Com A #2
Pertinent Data Sheet

Location: 1650' FNL, 1600' FEL, Unit G, Section 16, T32N, R10W, San Juan County, New Mexico

Latitude: 36° - 59.25' **Longitude:** 107° - 52.99'

Field: Blanco Mesa Verde **Elevation:** 6431' GL
6441' KB **TD:** 5754'
PBTD: 5700'

Spud Date: 08/28/58 **Completed:** 09/29/58 **DP No:** 50190A
Lease: B-11127-3-NM
GWI: 100.00%
NRI: 81.8125%
Prop#: 012587700

Casing/Liner Record:

<u>Hole Size</u>	<u>Casing Size</u>	<u>Weight & Grade</u>	<u>Depth Set</u>	<u>Cement</u>	<u>Top/Cement</u>
15"	10-3/4"	32.75# Spiral Weld	250'	300 sx	Circ. Cmt.
9-7/8"	7-5/8"	26.4# J-55	3412'	200 sx	2100' (TS)
6-3/4"	5-1/2" Liner	15.5# J-55	3370-5750'	150 sx	3370' (TS)

Tubing Record:

<u>Tubing Size</u>	<u>Weight & Grade</u>	<u>Depth Set</u>	<u>Number of jts.</u>
2-3/8"	4.7#	5655'	180

<u>Formation Tops:</u>	<u>Estimated</u>	<u>Cliffhouse</u>	<u>4765'</u>
Ojo Alamo	2285'	Menefee	5160'
Fruitland	2794'	Point Lookout	5481'
Pictured Cliffs	3180'	Mancos	5710'
Huerfanito Bentonite	3880'		

Logging Record: ES, GRL, Temp., Ind.

Stimulation: 9/18/58 - Perfs in Point Lookout - 5504'-5540', 5553'-5610', 5622'-5632'. Frac w/ 50,000 gal. water and 55,000 lbs. 20/40 sand. Perf in Menefee - 5328'-5344', 5354'-5368'. Frac w/ 30,000 gal. and 30,000 lbs. 20/40 sand.

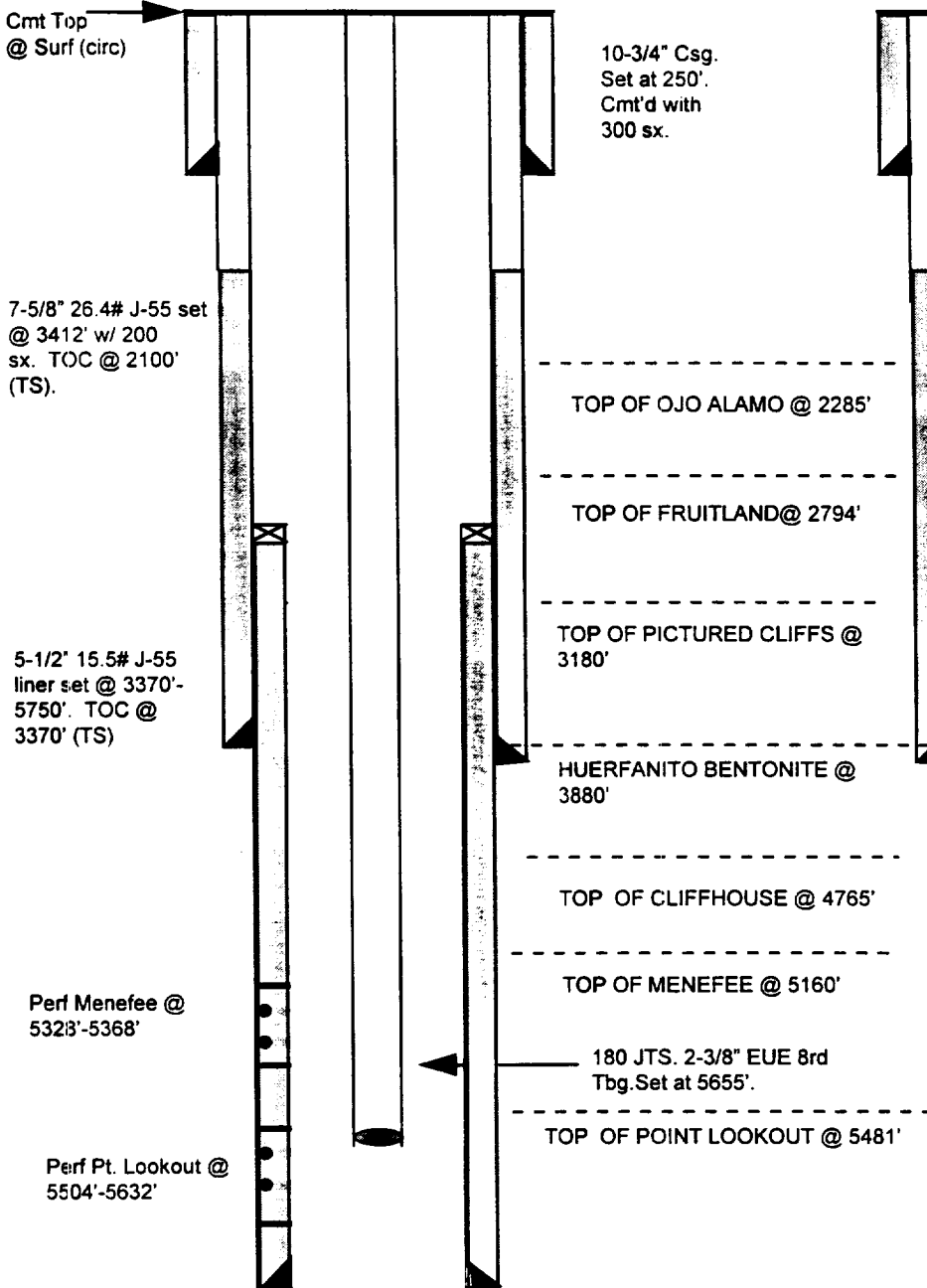
Workover History: None

Pipeline: EPNG

Burroughs Com A #2

Unit G, Section 16, T32N, R10W
San Juan County, NM

Current Schematic



Proposed Schematic

