

NEW MEXICO OIL CONSERVATION COMMISSION  
Santa Fe, New Mexico

NOTICE OF INTENTION TO DRILL OR RECOMPLETE

Notice must be given to the District Office of the Oil Conservation Commission and approval obtained before drilling or recompletion begins. If changes in the proposed plan are considered advisable, a copy of this notice showing such changes will be returned to the sender. Submit this notice in QUINTUPLICATE. One copy will be returned following approval. See additional instructions in Rules and Regulations of the Commission.

Farmington, New Mexico

June 10, 1955

(Place)

(Date)

OIL CONSERVATION COMMISSION  
SANTA FE, NEW MEXICO

Gentlemen:

You are hereby notified that it is our intention to commence the (Drilling) ~~(Recompletion)~~ of a well to be known as

**El Paso Natural Gas Company**

(Company or Operator)

**Heizer Pool Unit**

(Lease)

Well No. **1**, in **G** (Unit) The well is located **1550** feet from the **North** line and **1450** feet from the **East** line of Section **15**, T. **32N**, R. **10W**, NMPM. (GIVE LOCATION FROM SECTION LINE) **Blanco** Pool, **San Juan** County

If State Land the Oil and Gas Lease is No. **Fee**

If patented land the owner is

Address

We propose to drill well with drilling equipment as follows: **Rotary tools, using gas circulation to drill the pay section.**

The status of plugging bond is **Statewide**

Drilling Contractor

We intend to complete this well in the **Mesa Verde formation** formation at an approximate depth of **5180'** feet.

CASING PROGRAM

We propose to use the following strings of Casing and to cement them as indicated:

Size of Hole	Size of Casing	Weight per Foot	New or Second Hand	Depth	Sacks Cement
12 3/4"	9 5/8"	36.0#	New	170'	125
8 3/4"	7"	23.0#	New	4240'	500

If changes in the above plans become advisable we will notify you immediately.

ADDITIONAL INFORMATION (If recompletion give full details of proposed plan of work.) **It is proposed to sand-oil fracture the Cliff House and Point Lookout formations.**

**The E/2 of Section 15 is dedicated to this well.**

**Gaston Fee (W/2 SE) SF 078699 (E/2NE)**

**Daughtie-Fee (SWNE).**

**(E/2) NM 013367 (E/2 SE) Heizer - Fee (NWNE)**

Approved  
Except as follows:

Sincerely yours,

**El Paso Natural Gas Company**

(Company or Operator)

By

**Petroleum Engineer**

Send Communications regarding well to

Name **E. J. Coel**

Address **Box 997, Farmington, New Mexico**

OIL CONSERVATION COMMISSION

By **Original Signed Emery C. Arnold**

**Oil and Gas Inspector Dist. #3.**

Title

COMPANY El Paso Natural Gas Company

Well Name & No. HEIZER POOL UNIT NO. 1

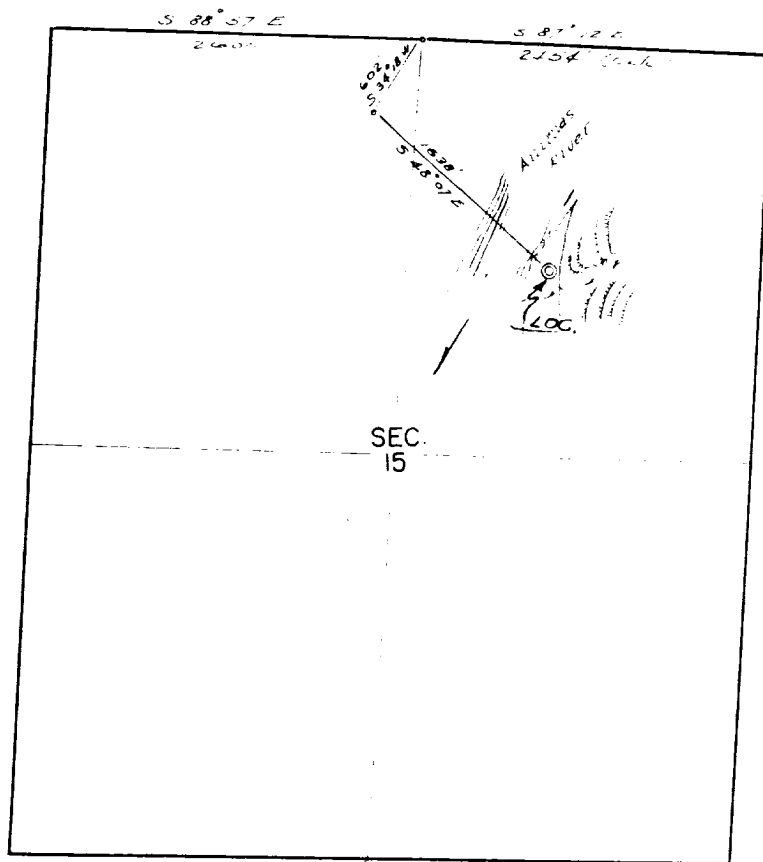
Lease No. FEE

Location 1550' from the North line and 1450' from the East line.

Being in SW 1/4 NE 1/4

Sec. 15, T. 32 N., R. 10 W., N.M.P.M., San Juan County, New Mexico.

Ground Elevation 5916, UNGRADED



Scale, 1" = 1 mile

Surveyed May 21, 1955

This is to certify that the above plat was prepared from field notes of actual surveys made by me or under my supervision and that the same are true and correct to the best of my knowledge and belief.

Ernest V. Echohawk

Ernest V. Echohawk  
Registered Land Surveyor  
N. M. Reg. #1545



320 ACRES, E/2 SECTION (PLAT)

OIL CONSERVATION COMMISSION		
AZTEC DISTRICT OFFICE		
No. Copies Received 7		
DISTRIBUTION		
	NO. FURNISHED	
Operator	1	
Santa Fe	1	
Proration Office		
State Land Office		
U. S. G. S.	2	
Transporter		
File	1	/