

NEW MEXICO OIL CONSERVATION COMMISSION
Santa Fe, New Mexico

NOTICE OF INTENTION TO DRILL OR RECOMPLETE

Notice must be given to the District Office of the Oil Conservation Commission and approval obtained before drilling or recompletion begins. If changes in the proposed plan are considered advisable, a copy of this notice showing such changes will be returned to the sender. Submit this notice in QUINTUPLICATE. One copy will be returned following approval. See additional instructions in Rules and Regulations of the Commission.

Farmington, New Mexico

June 10, 1955

(Place)

(Date)

OIL CONSERVATION COMMISSION
SANTA FE, NEW MEXICO

Gentlemen:

You are hereby notified that it is our intention to commence the (Drilling) (~~Recompletion~~) of a well to be known as

El Paso Natural Gas Company

(Company or Operator)

Stull Pool Unit

(Lease)

Well No. 1, in L The well is

located 1650 feet from the South line and 1135 feet from the West

line of Section 10, T. 32N, R. 10W, NMPM.

(GIVE LOCATION FROM SECTION LINE) Blanco Pool, San Juan County

If State Land the Oil and Gas Lease is No. Fee

If patented land the owner is

Address

We propose to drill well with drilling equipment as follows: Rotary tools, using gas circulation to drill the pay section.

The status of plugging bond is Statewide

Drilling Contractor

We intend to complete this well in the Mesa Verde formation. 5375' feet.

formation at an approximate depth of

CASING PROGRAM

We propose to use the following strings of Casing and to cement them as indicated:

Size of Hole	Size of Casing	Weight per Foot	New or Second Hand	Depth	Sacks Cement
12 3/4"	9 5/8"	36.0#	New	170'	125
8 3/4"	7"	23.0#	New	4435'	500

If changes in the above plans become advisable we will notify you immediately.

ADDITIONAL INFORMATION (If recompletion give full details of proposed plan of work.) It is proposed to sand-oil fracture the Cliff House and Point Lookout formations.

All of Section 10 is dedicated to this well.

SF 078699 (E/2 SE)

Ellsbury Fee (Rest SWSE)

Bradford Fee (Lots 2 & 10 ac. SW/SE) Stull Fee (SW).

Approved
Except as follows:

6-13, 1955

Sincerely yours,

El Paso Natural Gas Company

(Company or Operator)

By

Petroleum Engineer

Position

Send Communications regarding well to

E. J. Coel

Name

Box 997, Farmington, New Mexico

Address

OIL CONSERVATION COMMISSION

By Original Signed Emery C. Arnold

Title Oil and Gas Inspector Dist. #3

COMPANY El Paso Natural Gas Company

Well Name & No. STULL POOL UNIT NO. 1

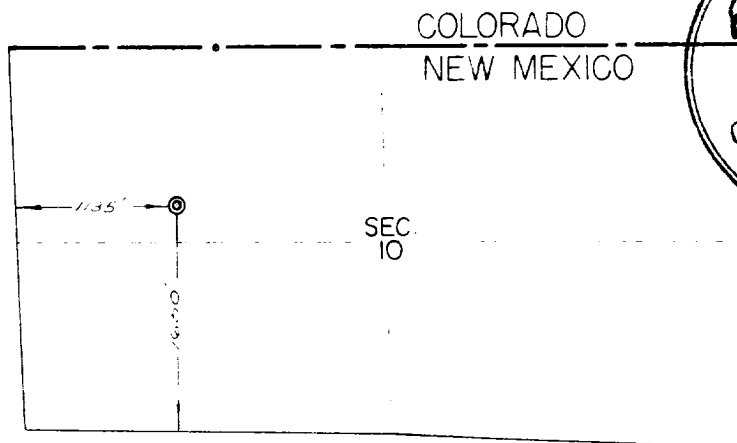
Lease No. FEE

Location 1650' from the South line and 1135' from the West line.

Being in $\frac{1}{2}$ of section 10, a fractional section.

Sec. 10, T32N, R10W, N.M.P.M., San Juan County, New Mexico.

Ground Elevation 6130, ungraded.



Scale, 4 inches = 1 mile



Surveyed May 20, 1955

This is to certify that the above plat was prepared from field notes of actual surveys made by me or under my supervision and that the same are true and correct to the best of my knowledge and belief.

Ernest V. Echohawk

Ernest V. Echohawk
Registered Land Surveyor
N. M. Reg. #1545



Albuquerque, New Mexico

345.80 ACRES, ALL OF FRACTIONAL SECTION (PLAT)

OIL CONSERVATION COMMISSION		
AZTEC DISTRICT OFFICE		
No. Copies Received 7		
DISTRIBUTION		
	NO. FURNISHED	
Operator	7	
Santa Fe		
Proration Office		
State Land Office		
U. S. G. S.		
Transporter		
File	1	/