

NEW MEXICO OIL CONSERVATION COMMISSION
Santa Fe, New Mexico

NOTICE OF INTENTION TO DRILL OR RECOMPLETE

Notice must be given to the District Office of the Oil Conservation Commission and approval obtained before drilling or recompletion begins. If changes in the proposed plan are considered advisable, a copy of this notice showing such changes will be returned to the sender. Submit this notice in QUINTUPLICATE. One copy will be returned following approval. See additional instructions in Rules and Regulations of the Commission.

Box 1659, Midland, Texas
(Place)

January 14, 1954
(Date)

OIL CONSERVATION COMMISSION
SANTA FE, NEW MEXICO

Gentlemen:

You are hereby notified that it is our intention to commence the (Drilling) (~~Recompletion~~) of a well to be known as
Great Western Drilling Company

(Company or Operator)

J. E. Becker

(Lease)

Well No. **1**, in **K** (Unit) The well is

located **1850** feet from the **South** line and **1850** feet from the

West

line of Section **7**, T. **32N**, R. **11W**, NMPM.

(GIVE LOCATION FROM SECTION LINE)

Blanco

Pool, **San Juan** County

If State Land the Oil and Gas Lease is No. **-**

If patented land the owner is **-**

Address **-**

We propose to drill well with drilling equipment as follows: **Rotary to 5300'**

The status of plugging bond is **Blanket Bond Filled**

Drilling Contractor **Great Western Drilling Company**

We intend to complete this well in the **Mesa Verde** formation at an approximate depth of **5300** feet.

CASING PROGRAM

Fractional Section
332.27 acres

We propose to use the following strings of Casing and to cement them as indicated:

Size of Hole	Size of Casing	Weight per Foot	New or Second Hand	Depth	Sacks Cement
12-1/4"	9-5/8"	32.3#	New	200'	100
8-3/4"	7"	20#	New	4900'	300

If changes in the above plans become advisable we will notify you immediately.

ADDITIONAL INFORMATION (If recompletion give full details of proposed plan of work.)

Section 7 is a fractional section containing 332.27 Acres. All of Section 7 is designated as the drilling unit.

If well is capable of production the entire Mesa Verde Section will be shot with approximately three (3) quarts per foot.

Approved **2-1**, 19**54**
Except as follows:

Sincerely yours,

Great Western Drilling Co.
(Company or Operator)

By **M. B. Wilson**

Position **Chief Petroleum Engineer**
Send Communications regarding well to

Name **Great Western Drilling Co.**

Address **Box 1659,
Midland, Texas**

OIL CONSERVATION COMMISSION

By **Concept**

Title **Oil and Gas Inspector Dist. 42**

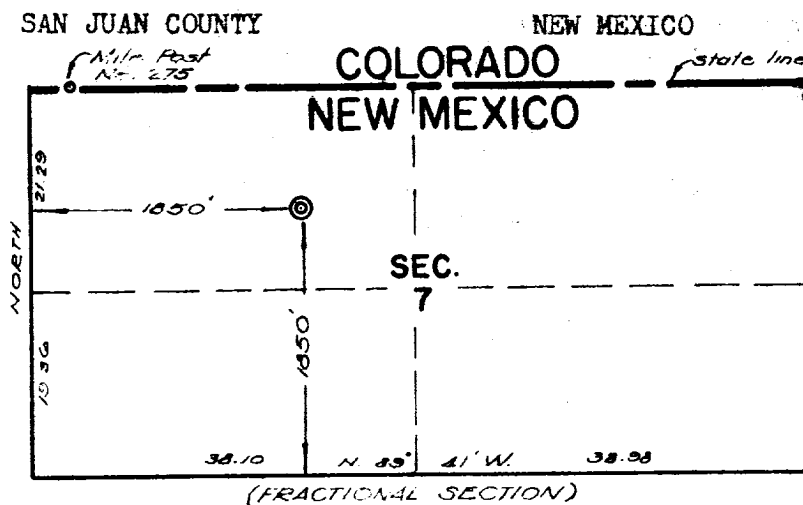
Company GREAT WESTERN DRILLING COMPANY

Lease J. E. Decker Well No. 1

Sec. 7, T. 32 N., R. 11 W., N.M.P.M.

Location 1850' from the South line and 1850'
from the West line.

Elevation 6470, ungraded ground.



Scale, 4" equals ~~32.27~~ ^{32.27} Acres

This is to certify that the above plat was prepared from field notes of actual surveys made by me or under my supervision and that the same are true and correct to the best of my knowledge and belief.

Ernest V. Echohawk

Ernest V. Echohawk
Registered Land Surveyor
New Mexico Reg. No. 1545

SAN JUAN ENGINEERING CO.
FARMINGTON, NEW MEXICO

Seal:

Surveyed January 5, 1954



OIL CONSERVATION COMMISSION		
AZTEC DISTRICT OFFICE		
No. Copies Received <u>5</u>		
DISTRIBUTION		
	NO. FURNISHED	
Operator	<u>1</u>	
Santa Fe	<u>1</u>	
Proration Office		
State Land Office	<u>2</u>	
U. S. G. S.		
Transporter	<u>1</u>	<input checked="" type="checkbox"/>
File		