

NEW MEXICO OIL CONSERVATION COMMISSION
Santa Fe, New Mexico

Form C-101
Revised (12/1/55)

NOTICE OF INTENTION TO DRILL

Notice must be given to the District Office of the Oil Conservation Commission and approval obtained before drilling or recompletion begins. If changes in the proposed plan are considered advisable, a copy of this notice showing such changes will be returned to the sender. Submit this notice in QUINTUPPLICATE. One copy will be returned following approval. See additional instructions in Rules and Regulations of the Commission. If State Land submit 6 Copies Attach Form C- 128 in triplicate to first 3 copies of form C-101

Denver, Colorado
(Place)

April 10, 1961
(Date)

OIL CONSERVATION COMMISSION
SANTA FE, NEW MEXICO

Gentlemen:

You are hereby notified that it is our intention to commence the Drilling of a well to be known as

Consolidated Oil & Gas, Inc.
(Company or Operator)

Kline, Well No. 1, in G. The well is
(Lease) (Unit)

located 1850 feet from the North line and 1550 feet from the

East line of Section 10, T. 31N, R. 13W, NMPM.

(GIVE LOCATION FROM SECTION LINE) Basin Dak. & Blanco MV. Pool, San Juan County

If State Land the Oil and Gas Lease is No.

If patented land the owner is Glenn A. Hopkins, et al

Address 401 Airport Drive, Farmington, New Mexico

We propose to drill well with drilling equipment as follows:

rotary with mud

The status of plugging bond is blanket

Drilling Contractor Huron Drilling Company, Inc.

APR 12 1961

We intend to complete this well in the Mesa Verde and Dakota

formation at an approximate depth of 6800 feet.

CASING PROGRAM

We propose to use the following strings of Casing and to cement them as indicated:

Size of Hole	Size of Casing	Weight per Foot	New or Second Hand	Depth	Sacks Cement
13 3/4	9 5/8	32.75	New	200	150
7 7/8	5 1/2	15.50	New	6200	150 at shoe
Stage collar at base of Ft. Lookout cemented with 150 sx.					

If changes in the above plans become advisable we will notify you immediately.

ADDITIONAL INFORMATION (If recompletion give full details of proposed plan of work.)

Drill to TD, cement 5 1/2" casing. Perforate and sand-water fracture Dakota, set bridge plug, perforate and sand fracture Mesa Verde. Produce Dakota through tubing from below packer, produce Mesa Verde through annulus tubing string.

Approved 4-12-61, 1961
Except as follows:

subject to approval of
santa fe standard unit

OIL CONSERVATION COMMISSION

By A. R. Gendrick

Sincerely yours,

Consolidated Oil & Gas, Inc.
(Company or Operator)

By

Position Chief Engineer

Send Communications regarding well to

Name J. E. Ladd

Address 2112 Tower Building, Denver 2, Colorado

NUMBER OF COPIES RECEIVED	
DISTRIBUTION	
SANTA FE	
FILE	
U.S.G.S.	
LAND OFFICE	
TRANSPORTER	OIL GAS
PRORATION OFFICE	
OPERATOR	

NEW MEXICO OIL CONSERVATION COMMISSION
WELL LOCATION AND ACREAGE DEDICATION PLAT
 SEE INSTRUCTIONS FOR COMPLETING THIS FORM ON THE REVERSE SIDE

FORM C-128
 Revised 5/1/57

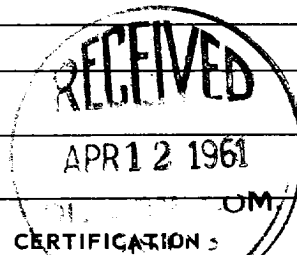
SECTION A

Operator CONSOLIDATED OIL AND GAS, INC.		Lease Kline		Well No. 1
Unit Letter G	Section 10	Township 31 NORTH	Range 13 WEST	County SAN JUAN
Actual Footage Location of Well: 1850 feet from the NORTH line and 1550 feet from the EAST line				
Ground Level Elev. 5715.0	Producing Formation Mesa Verde, Dakota	Pool Blanco Mesa Verde Basin Dakota	Dedicated Acreage: 326.52 320 Acres	

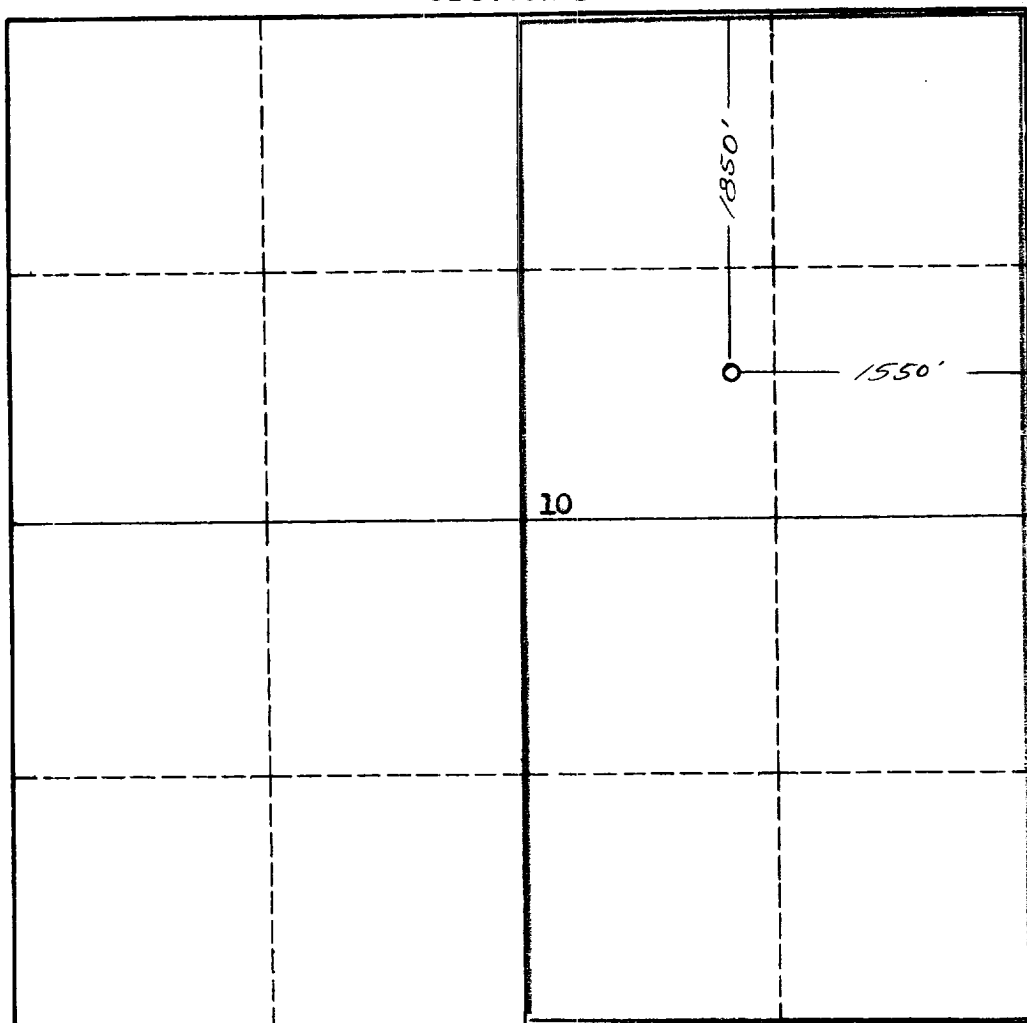
Ref: GLO plat dated 9 July 1954

1. Is the Operator the only owner in the dedicated acreage outlined on the plat below? YES ☒ NO ☐ ("Owner" means the person who has the right to drill into and to produce from any pool and to appropriate the production either for himself or for himself and another. (65-3-29 (e) NMSA 1935 Comp.)
2. If the answer to question one is "no," have the interests of all the owners been consolidated by communitization agreement or otherwise? YES ☐ NO ☐ . If answer is "yes," Type of Consolidation _____
3. If the answer to question two is "no," list all the owners and their respective interests below:

Owner	Land Description



SECTION B



CERTIFICATION

I hereby certify that the information in SECTION A above is true and complete to the best of my knowledge and belief.

Name _____
George E. Farmer
 Position **Chief Engineer**
 Company **Consolidated Oil & Gas, Inc.**
 Date **April 10, 1961**

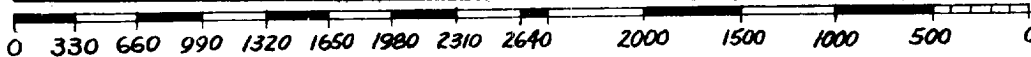
I hereby certify that the well location shown on the plat in SECTION B was plotted from field notes of actual surveys made by me or under my supervision, and that the same is true and correct to the best of my knowledge and belief.

Date Surveyed **10 March 1961**
 Registered Professional Engineer and/or Land Surveyor

James P. Leese

Certificate No. **1463**

San Juan Engineering Company



INSTRUCTIONS FOR COMPLETION OF FORM C-128

1. Operator shall furnish and certify to the information called for in Section A.
2. Operator shall outline the dedicated acreage for *both* oil and gas wells on the plat in Section B.
3. A registered professional engineer or land surveyor registered in the State of New Mexico or approved by the Commission shall show on the plat the location of the well and certify this information in the space provided.
4. All distances shown on the plat must be from the outer boundaries of the Section.
5. If additional space is needed for listing owners and their respective interests as required in question 3 of Section A, please use space below.