

UNITED STATES  
DEPARTMENT OF THE INTERIOR  
BUREAU OF LAND MANAGEMENT

RECEIVED  
JAN 11 1964

13 APR 19 PM 12:22

Sundry Notices and Reports on Wells.

**BURLINGTON  
RESOURCES**

NMCCD

**Allison Unit #23-X**  
Blanco Mesaverde/Basin Dakota  
Unit M, Section 19, T32N, R06W  
San Juan County, New Mexico  
Elevation 6442' GL, 6451' KB  
LAT: 36° 57.66' LONG: 107° 30.30

**Summary:**

The Allison Unit #23-X was spudded in July of 1960 and was originally completed in the Point Lookout and the Dakota. In July of 1998 the Lewis was added and the Mesaverde and Dakota were commingled. By running the spinner flowmeter the percent contribution of the Lewis and of the individual zones within the Lewis can be determined. The data gathered in this sweep of spinner surveys will be combined with the spinner data gathered in the spring of 1998 to help determine the ideal stimulation design for the Lewis Shale.

**Procedure:**

1. Comply with all NMOCD, BLM, and BR regulations. Conduct daily safety meetings for all personnel on location.

**DO NOT KILL WELL. ANY FLUIDS USED IN WELLBORE WILL INVALIDATE DATA NEEDED. IF FLUIDS ARE REQUIRED, CONTACT MICHELE QUISEL OR STEVE CAMPBELL TO DISCUSS ALTERNATIVES.**

2. Inspect location and wellhead and install rig anchors prior to rig move if needed.
3. RU slickline unit. RU full lubricator. RIH w/slickline and set tubing choke in SN @ 7735' (1.78" I.D. bore). RD slickline unit.
4. RU workover unit. Check all safety equipment to insure proper location and working order. ND wellhead and NU 7-1/16" 3000 BOP, spool, stripping head and blooie line to pit. Continue to flow well through casing valve. Flow well through casing valve and blow well through blooie line to pit.
5. Strip 248 jts. 2-3/8" 4.7# J-55 tubing through the stripping head and stand back. ND stripping head.

**THE WELL WILL REMAIN ON PRODUCTION DURING THE ENTIRE SPINNER SURVEY.**

6. RU Schlumberger. RU full lubricator. RIH w/ spinner flowmeter tool/GR/CCL. Correlate depth to GR/CCL logs provided by the engineer on location.

## Allison Unit #23-X

Blanco Mesaverde/Basin Dakota  
Unit M, Section 19, T32N, R06W  
San Juan County, New Mexico  
Elevation 6442' GL, 6451' KB  
LAT: 36° 57.66' LONG: 107° 30.30

7. Take spinner survey readings at the following stations:

- |              |       |   |
|--------------|-------|---|
| • Station #1 | 4215' | Top of Navajo City Chacra               |
| • Station #2 | 4610' | Top Otero Chacra                        |
| • Station #3 | 4740' | Top of Middle Bench of the Otero Chacra |
| • Station #4 | 5050' | Top of Upper Cliffhouse                 |
| • Station #5 | 5576' | Top of Point Lookout                    |
| • Station #6 | 5750' | Top of Dakota                           |

8. Tag bottom w/ spinner tool (PDTD ~ 8059'). POOH w/ spinner flowmeter tool/GR/CCL. RD full lubricator. RD and release Schlumberger.

8A. If fill, TIH w/ 4-1/4" bit and CO to PBTD. TOOH.

10. NU stripping head. Strip 2-3/8" 4.7# J-55 tubing w/ expendable check and seating nipple one joint off bottom and land tubing @  $\pm 7950'$ . ND stripping head, BOP, spool and blooie line. NU wellhead. Pump off expendable check and make sure well will flow. Place well back on production. RD and release rig.

Recommend: Michele S. Quisel  
Production Engineer 4/7/99

Approve: Bruce D. Boyer 4.14.99  
Drilling Superintendent

Approve: [Signature] 7/10/99  
Team Leader [Signature]

### Vendors:

Wireline:	Schlumberger	328-5006
Slickline:	Tefsteller Inc.	325-1731

Michele Quisel	Office: 324-6162	Pager: 326-8196	Home: 564-9097
Steve Campbell	Office: 326-9546	Pager: 564-1902	Home: 325-8218
Hans Dube	Office: 326-9555		Home: 564-9401
Glen Christiansen	Office: 326-9733		Home: 327-5089

# Allison #23X

990' FNL, 965' FWL  
Unit M Sec. 19, T-32 R-6W  
San Juan County, NM

KB 6451

GL 6442

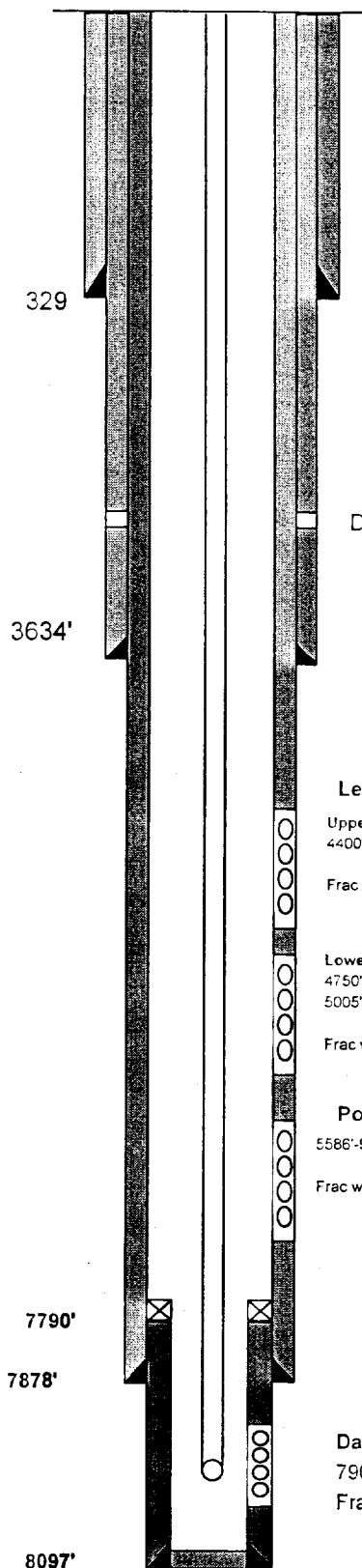
13-3/8" 54.5# J-55  
356 sks TOC circ

12-1/4" Hole  
9-5/8" 40# N-80  
DV tool@2723  
1st Stage: 190 sks  
2nd Stage: 714 sks circ

8-3/4" Hole  
7" 23# N-80/J-55  
1285 sk TOC 3460' TS

Tubing: 2-3/8"  
4.7# J-55 EUE  
@ 7737'

6-3/4" Hole  
5" 15# J-55  
Liner  
85 sks TOC circ.



## Formation Tops

Ojo Alamo	2259
Kirland	2554
Fruitland Coal	2955
Pictured Cliffs	3222
Lewis	3522
Cliff House	5320
Menefee	5440
Point Lookout	5630
Mancos	5775
Gallup	7126
Sanostee	7430
Greenhorn	7709
Graneros	7762
Dakota	7896
Morrison	8080

DV @ 2723'

## Lewis:

Upper Lewis: 4225', 40', 55', 70', 85', 4300', 15', 30', 45', 60', 70', 80', 90', 4400', 4410', 4425', 40', 55', 70', 80', 90', 4500', 4620', 35', 50', 65', 80', 95'

Frac w/ 125,000 lbs 20/40 sand & 70Q Foam

## Lower Lewis:

4750', 65', 80', 95', 4810', 25', 40', 60', 75', 90', 4910', 20', 45', 70', 85', 5005', 20', 35', 60', 75', 90', 5105', 5120', 35', 50', 65', 80', 95'

Frac w/ 125,000 lbs 20/40 sand & 70Q Foam

## Point Lookout:

5586'-92', 5630'-34', 5652'-5666', 5676'-86', 5690'-5702', 5720'-26'

Frac w/ 47,523 gal water, 53,000 # 20/40 sand

## Dakota

7900'-20', 7948'-54', 7960'-70', 7974'-80', 8006'-16', 8026'-34'

Frac w/ water & 51,000# 40/60 sand

TD = 8104  
PBD = 8059

MSQ  
04/07/1999