

UNITED STATES  
DEPARTMENT OF THE INTERIOR  
BUREAU OF LAND MANAGEMENT

RECEIVED  
BLM

Sundry Notices and Reports on Wells

57 DEC 31 PM 1:07

1. Type of Well

GAS

2. Name of Operator

**BURLINGTON  
RESOURCES**

3. Address & Phone No. of Operator

PO Box 4289, Farmington, NM 87499 (505) 326-9700

4. Location of Well, Footage, Sec., T, R, M

1050' FSL, 875' FWL, Sec. <sup>M</sup>14, T-32-N, R-7-W

5. Lease Number  
SF 078459-B

6. If Indian, All. or  
Tribe Name

7. Unit Agreement Name  
Allison Unit

8. Well Name & Number  
Allison Unit #28

9. API Well No.  
30-045-12195 **20/53**

10. Field and Pool  
Blanco MV

11. County and State  
San Juan Co., NM

12. CHECK APPROPRIATE BOX TO INDICATE NATURE OF NOTICE, REPORT, OTHER DATA

Type of Submission

Type of Action

|  |  |  |
|--|--|--|
| <input checked="" type="checkbox"/> Notice of Intent | <input type="checkbox"/> Abandonment               | <input type="checkbox"/> Change of Plans         |
| <input type="checkbox"/> Subsequent Report           | <input type="checkbox"/> Recompletion              | <input type="checkbox"/> New Construction        |
| <input type="checkbox"/> Final Abandonment           | <input type="checkbox"/> Plugging Back             | <input type="checkbox"/> Non-Routine Fracturing  |
|  | <input type="checkbox"/> Casing Repair             | <input type="checkbox"/> Water Shut off          |
|  | <input type="checkbox"/> Altering Casing           | <input type="checkbox"/> Conversion to Injection |
|  | <input checked="" type="checkbox"/> Other -pay add |  |

13. Describe Proposed or Completed Operations

It is intended to add pay to the Mesaverde formation on the subject well according to the attached procedure and wellbore diagram.

RECEIVED  
JAN 12 1998  
OIL CON. DIV.  
DIST. 3

14. I hereby certify that the foregoing is true and correct.

Signed *Doane W. Spencer* (RG6) Title Regulatory Admin. Date 12/31/97

(This space for Federal or State Office use)

APPROVED BY **TS/ Doane W. Spencer** Title \_\_\_\_\_ Date JAN - 7 1998

CONDITION OF APPROVAL, if any:

**WOOD**

**Allison Unit #28**  
Burlington Resources Oil & Gas  
Blanco Mesaverde Workover  
UnitM-Sec14-T32N-R07W  
Lat: 36° 58.55'  
Long: 107° 32.55'

- 
- Comply with all BLM, NMOCD, & BR rules & regulations.
  - **Always Hold Safety Meetings.** Place fire and safety equipment in strategic locations.
  - 4000' 3-1/2" 9.3# N-80 Frac String
  - 2100' 2-7/8" 6.5# BTC tubing
  - Spot and fill 8 frac tanks with 2% KCl water.
  - Use drill gas for all operations.
  - (1) 7" PKR and (1) 7" RBP required for 7" 20# J55 csg (If csg leaks)
  - (1) 4-1/2" PKR and (2) 4-1/2" CIBP required for 4-1/2" 10.5# J55 pipe.
  - Be prepared to flow back Lewis frac within 30 min of shutting down frac pumps.
- 

*This well is part of the 1998 Allison Mesaverde optimization program. The well is currently completed in the Mesaverde Point Lookout (146 MCFD). Cumulative production is 2757 MMCF from the Point Lookout. Menefee & Cliffhouse pay will be added and stimulated with a 25# xlink frac in one stage. Lewis pay will also be added and stimulated with 70 Quality Foam. Foam is to be used in the Lewis to aide in keeping fluids off the formation and assisting in flowback. The choke schedule is designed to ensure proppant remains in the fracture.*

**NOTE: Point Lookout perfs open 6013' - 6048'**

1. MIRU. Record and report SI pressures on tubing, casing, & bradenhead. Blow down casing & tubing. Kill well w/ 2% KCl. ND WH, NU BOP.
2. TOOH with 2-3/8" 4.7# J-55 tubing from 6077' (199 joints) and LD. Visually inspect tubing and replace any bad joints.
3. RU wireline unit. Run 4-1/2" gauge ring on wireline to 6010'. If gauge ring is not able to get to 6010', POOH. TIH with 3-7/8" bit and 4-1/2" csg scraper to 6010'. TOOH.
4. Wireline set 4-1/2" CIBP @ 6000' to isolate the Point Lookout. RD wireline
5. Under packoff RU wireline unit. With hole loaded and 1000 psi, run CCL/CBL from 6000' to 3850'. Send logs to office for evaluation. POOH.
6. PU 4-1/2" PKR on 2-3/8" tbg, TIH and set PKR @ 4200'. Pressure test CIBP and 4-1/2" csg to 3800 psi. Hold for 10 minutes. If PT does not hold, locate hole(s). Engineering will provide squeeze design if required.
7. Close pipe rams and pressure test csg to 1000 psi from surface. Hold for 10 minutes. If PT does not hold, locate hole(s). Engineering will provide squeeze design if required. TOOH.

***Menefee/Cliffhouse Completion:***

8. Under packoff, perforate MN/CH (top-down if in acid) @ the following depths with a 3-1/8" HSC gun w/ Owen 302T 10g charges (0.29" hole, 16.62" penetration).

**1 SPF, 120° Spacing: 5661', 5676', 5691', 5710', 5722', 5731', 5747', 5763', 5775',  
5787', 5807', 5819', 5830', 5846', 5858', 5872', 5885', 5894'**

**2 SPF, 120° Spacing: 5905', 5917', 5925', 5935', 5948', 5964', 5978'**

**(32 total holes, 25 effective holes, 317' gross interval)**

9. PU 4-1/2" FB PKR on 4 joints of 2-3/8", 2010' 2-7/8" BTC tubing, and 3-1/2" 9.3# N-80 frac string. Set PKR 4200'. Hold 500 psi on annulus during breakdown and balloff.
10. RU stimulation company. Pressure test surface lines to 5250 psi. **Max surface pressure = 4250 psi at 5 BPM. Max static pressure = 3800 psi.** Break down MN/CH w/1000 gallons **15% HCL acid** (w/ 2 gal/1000 corrosion inhibitor). Establish rate into formation. Record breakdown pressure and rate and ISIP.
11. Begin balloff. Drop a total of 54 7/8" 1.3 SG RCN ball sealers spaced evenly throughout job. RD stimulation company. TIH to knock balls off below bottom perf. Reset pkr @ 4200'
12. Pressure test surface lines to 6400 psi. **Max surface pressure = 5400 psi at 30 BPM. Max static pressure = 3800 psi.** Hold 500 psi on annulus. Fracture stimulate the MN/CH w/ 100,001# 20/40 Arizona sand in 25# Xlink at 30 BPM. See attached frac schedule for details. *(4 frac tanks needed)*
13. Flow back as necessary to release pkr. Release PKR, TOOH.
14. RU wireline under packoff. Set 4-1/2" CIBP @ 5650'.

***Lewis Completion:***

15. Perforate Lewis @ the following depths w/ 3-1/8" HSC gun w/ Owen 302T 10g charges (0.29" hole, 16.62" penetration), 1 SPF @ 120 degree phasing.

**4594', 4605', 4615', 4625', 4640', 4677', 4684', 4693', 4700', 4712', 4730',  
4740', 4750', 4760', 4770', 4795', 4806', 4815', 4824', 4835', 4997', 5020',  
5036', 5083', 5116', 5145', 5165', 5183', 5214', 5225', 5261', 5285', 5294',  
5420', 5430', 5440', 5450', 5470', 5480', 5495', 5510', 5538', 5552', 5576',  
5588'**

**(45 total holes, 994' gross interval)**

16. PU 4-1/2" PKR on 4 jts 2-3/8", 1620' 2-7/8" BTC tbg, and 3-1/2" frac string. TIH, set PKR @ 5620'. Pressure test CIBP to 3800 psi. Release PKR, TOOH and reset pkr at 4200'. Hold 500 psi on annulus during breakdown and balloff.
17. RU stimulation company. Pressure test surface lines to 5250 psi. **Max surface pressure = 4250 psi at 5 BPM. Max static pressure = 3800psi.** Break down Lewis w/1000 gallons **15% HCL acid** (w/ 2 gal/1000 corrosion inhibitor). Establish rate into formation. Record breakdown pressure and rate and ISIP.
18. Begin balloff. Drop a total of 50 7/8" 1.3 SG RCN ball sealers spaced evenly throughout job. RD stimulation company. TIH and knock balls off below the bottom perf. TOOH.

19. TIH with 4 joints 2-3/8" tbg, 230' 2-7/8" BTC tbg, and 3-1/2" frac string. Set pkr at 4200'. RU flowback equipment, to commence flowback within 30 min.
20. RU stimulation company. Pressure test surface lines to 7400 psi. **Max surface pressure = 6400 psi at 30 BPM. Max static pressure = 3800 psi.** Fracture stimulate the Lewis with 210,000# 20/40 Arizona sand in 60Q N2 foam at 30 BPM. Tagging with 3 RA elements. See attached frac schedule for details. *(4 frac tanks needed)*
21. Flow back well within 30 min after shutdown. Start flowback on 10/64" choke. Increase choke size as needed to bring fluid to surface but no sand. If well begins to produce sand decrease choke size until sand production stops. Continue to flowback until well produces dry gas. Take gauges when possible.
22. Release PKR & TOOH laying down 3-1/2" frac string. Change out rams to 2-3/8".
23. TIH w/ 3-7/8" bit on 2-3/8" tubing and clean out to CIBP @ 5650'. Pull up above Lewis perms, obtain Lewis pitot gauge. Drill up CIBP (minimum mist rate of 12 BPH), clean out to CIBP @ 6000'. Obtain pitot gauge on MN/CH/LW. Drill up CIBP (minimum mist rate of 12 BPH), and clean out to PBDT (6100'). Clean up to minimal water and trace to no sand. TOOH.
24. Prepare to run production tubing string as follows: expendable check, one joint 2-3/8" tubing, 1.78" seating nipple, and remaining tubing. Land tubing @ 6070'.
25. ND BOP's, NU single tubing hanger wellhead. Pump off expendable check. Obtain final pitot up tubing. If well will not flow on it's own, make swab run to seating nipple. If swab run is not necessary, run a broach on slickline to ensure that the tubing is clear. RD and MOL. Return well to production.

Recommend:

 12-31-97  
Production Engineer

Approved:

Basin Opportunities Team Leader

Approved:

Drilling Superintendent

RLG3

Vendors:

|              |             |          |
|--------------|-------------|----------|
| Stimulation: | Dowell      | 325-5096 |
| RA Tag:      | Protechnics | 326-7133 |

Production Engineers: **Bobby Goodwin**  
**326-9713-work**  
**564-7096-pager**  
**599-0992-home**

**Steve Campbell**  
326-9546 work  
564-1902 pager

## PERTINENT DATA SHEET

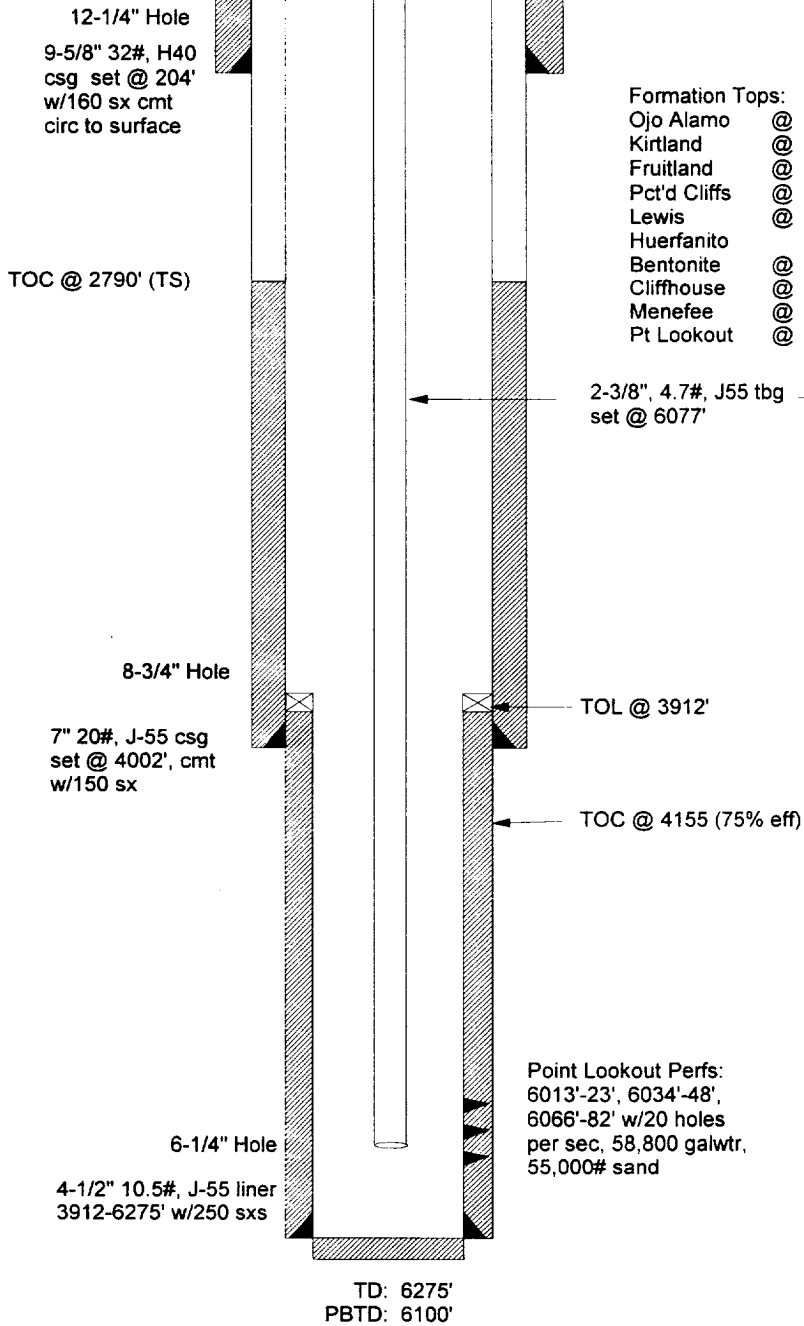
12/31/97

|   |                      |               |                                 |              |   |               |                  |
|---|----------------------|---------------|---------------------------------|--------------|---|---------------|------------------|
| <b>WELLNAME:</b> Allison Unit #28   |                      |               |                                 |              | <b>DP NUMBER:</b> 51697A<br><b>PROP. NUMBER:</b> 8920007520   |               |                  |
| <b>WELL TYPE:</b> Blanco Mesaverde  |                      |               |                                 |              | <b>ELEVATION:</b> KB 6842'<br>GL 6829'  |               |                  |
| <b>LOCATION:</b> 1050' FSL, 875' FWL<br>Unit M, Sec. 14, T32N, R07W<br>San Juan County, NM    |                      |               |                                 |              | <b>INITIAL POTENTIAL:</b> 11635 MMcf AOF<br><br><b>INITIAL SITP:</b> 1048 Psig<br><b>LAST AVAILABLE SITP:</b> - Psig          |               |                  |
| <b>OWNERSHIP:</b><br><b>GW:</b> 54.0568%<br><b>NRI:</b> 45.5445%<br><b>SJBT:</b> 0.1776% (RI) |                      |               |                                 |              | <b>DRILLING:</b><br><b>SPUD DATE:</b> 9/21/67<br><b>COMPLETED:</b> 10/7/67<br><b>TOTAL DEPTH:</b> 6275'<br><b>PBTD:</b> 6100' |               |                  |
| <b>CASING RECORD:</b>   |                      |               |                                 |              |   |               |                  |
| <b>HOLE SIZE</b>  | <b>SIZE</b>          | <b>WEIGHT</b> | <b>GRADE</b>                    | <b>DEPTH</b> | <b>EQUIP.</b>   | <b>CEMENT</b> | <b>TOC</b>       |
| 12-1/4"   | 9-5/8"               | 32#           | H40                             | 204'         | Casing  | 160 sxs       | Circ. to surface |
| 8-3/4"  | 7"                   | 20#           | J55                             | 4002'        | Casing  | 150 sxs       | 2790' (TS)       |
| 6-1/4"  | 4-1/2"               | 10.5#         | J55                             | 3912'-6275'  | Liner   | 250 sxs       |                  |
|   | 2-3/8"               | 4.6#          | J55, NUE                        | 6077'        | Tubing<br>No SN in well   |               |                  |
| <b>FORMATION TOPS:</b>  |                      |               |                                 |              |   |               |                  |
|   | Ojo Alamo            |               | 2589'                           |              | Cliffhouse  | 5706'         |                  |
|   | Kirtland             |               | 2696'                           |              | Menefee   | 5793'         |                  |
|   | Fruitland Coal       |               | 3258'                           |              | Point Lookout   | 6011'         |                  |
|   | Pictured Cliffs      |               | 3588'                           |              |   |               |                  |
|   | Lewis                |               | 3883'                           |              |   |               |                  |
|   | Heurfanito Bentonite |               | 4543'                           |              |   |               |                  |
| <b>LOGGING:</b> IES, FDC, GR  |                      |               |                                 |              |   |               |                  |
| <b>PERFORATIONS</b> 6013'-6023', 6034'-6048', 6066'-6082' - 20 Holes per section              |                      |               |                                 |              |   |               |                  |
| <b>STIMULATION:</b> Frac w/58,800 gal. water, 55,000# 20/40 sd.                               |                      |               |                                 |              |   |               |                  |
| <b>WORKOVER HISTORY:</b> None   |                      |               |                                 |              |   |               |                  |
| <b>PRODUCTION HISTORY:</b>  |                      |               |                                 |              |   |               |                  |
|   | <b>Gas</b>           | <b>Oil</b>    | <b>RESERVE INFORMATION:</b>     |              | <b>Gas</b>  | <b>Oil</b>    |                  |
| <b>Cumulative</b>   | 2757 MMcf            | 0 bo          | <b>Gross EUR</b>                |              | 4167 MMcf   | 0             |                  |
| <b>Current</b>  | 146 Mcfd             | 0 bo          | <b>Gross Remaining Reserves</b> |              | 1410 MMcf   | 0             |                  |
| <b>PIPELINE:</b> Williams Field Service   |                      |               |                                 |              |   |               |                  |

# Allison Unit #28

Blanco Mesaverde  
Unit M, Section 14, T32N, R7W  
San Juan County, NM  
Elevation: 6100' GR  
.LAT: 36 58.55' / LONG: 107 32.55'  
date spud: 09/21/67

## Current



## Proposed

