

UNITED STATES  
DEPARTMENT OF THE INTERIOR  
GEOLOGICAL SURVEY30-~~845~~-20154  
5. LEASE DESIGNATION AND SERIAL NO.

NM 013685 - NM - 016746

6. IF INDIAN, ALLOTTEE OR TRIBE NAME

7. UNIT AGREEMENT NAME

8. FARM OR LEASE NAME

Schwerdtfeger Com.

9. WELL NO.

1

10. FIELD AND POOL, OR WILDCAT

Basin Dakota

11. SEC., T., R., M., OR BLK.  
AND SURVEY OR AREA

Sec 27, T-31-N, R-9-W

12. COUNTY OR PARISH

San Juan

13. STATE

New Mexico

## APPLICATION FOR PERMIT TO DRILL, DEEPEN, OR PLUG BACK

1a. TYPE OF WORK

DRILL ☒DEEPEN ☐PLUG BACK ☐

b. TYPE OF WELL

OIL  
WELL ☐GAS  
WELL ☒

OTHER

SINGLE  
ZONE ☐MULTIPLE  
ZONE ☐

2. NAME OF OPERATOR

Tenneco Oil Company

3. ADDRESS OF OPERATOR

P. O. Box 1714, Durango, Colorado 81301

4. LOCATION OF WELL (Report location clearly and in accordance with any State requirements.\*)

At surface

1190 FSL, 1190 FWL

At proposed prod. zone

Unit M

14. DISTANCE IN MILES AND DIRECTION FROM NEAREST TOWN OR POST OFFICE\*

15. DISTANCE FROM PROPOSED\*

LOCATION TO NEAREST  
PROPERTY OR LEASE LINE, FT.  
(Also to nearest drlg. unit line, if any)

16. NO. OF ACRES IN LEASE

320

17. NO. OF ACRES ASSIGNED  
TO THIS WELL

320 W/2

18. DISTANCE FROM PROPOSED LOCATION\*  
TO NEAREST WELL, DRILLING, COMPLETED,  
OR APPLIED FOR, ON THIS LEASE, FT.

19. PROPOSED DEPTH

7530

20. ROTARY OR CABLE TOOLS

Rotary

21. ELEVATIONS (Show whether DF, RT, GR, etc.)

6083 Gr.

22. APPROX. DATE WORK WILL START\*

9/26/67

## 23. PROPOSED CASING AND CEMENTING PROGRAM

SIZE OF HOLE	SIZE OF CASING	WEIGHT PER FOOT	SETTING DEPTH	QUANTITY OF CEMENT
15"	9-5/8"	32#	700	Cmt to surface
8-3/4"	7"	20#	3200	260 sx.
6-1/4"	4-1/2"	10.5#, 11.6#	7530	150 sx first stage 100 sx 2nd stage

We plan to drill with rotary to an approximate T.D.  
of 7530. Run casing as shown above. Log. Perforate  
and frac and complete as a gas well. Run deliverability  
tests.



RECEIVED

SEP 20 1967

U. S. GEOLOGICAL SURVEY  
FARMINGTON, N.M.

IN ABOVE SPACE DESCRIBE PROPOSED PROGRAM: If proposal is to deepen or plug back, give data on present productive zone and proposed new productive zone. If proposal is to drill or deepen directionally, give pertinent data on subsurface locations and measured and true vertical depths. Give blowout preventer program, if any.

24.

SIGNED

M. K. Wagner

TITLE

DATE 9/19/67

(This space for Federal or State office use)

PERMIT NO.

APPROVAL DATE

APPROVED BY

TITLE

DATE

CONDITIONS OF APPROVAL, IF ANY:

USGS (5)

Cont (1)

\*See Instructions On Reverse Side

**NEW MEXICO OIL CONSERVATION COMMISSION  
WELL LOCATION AND ACERAGE DEDICATION PLAT**

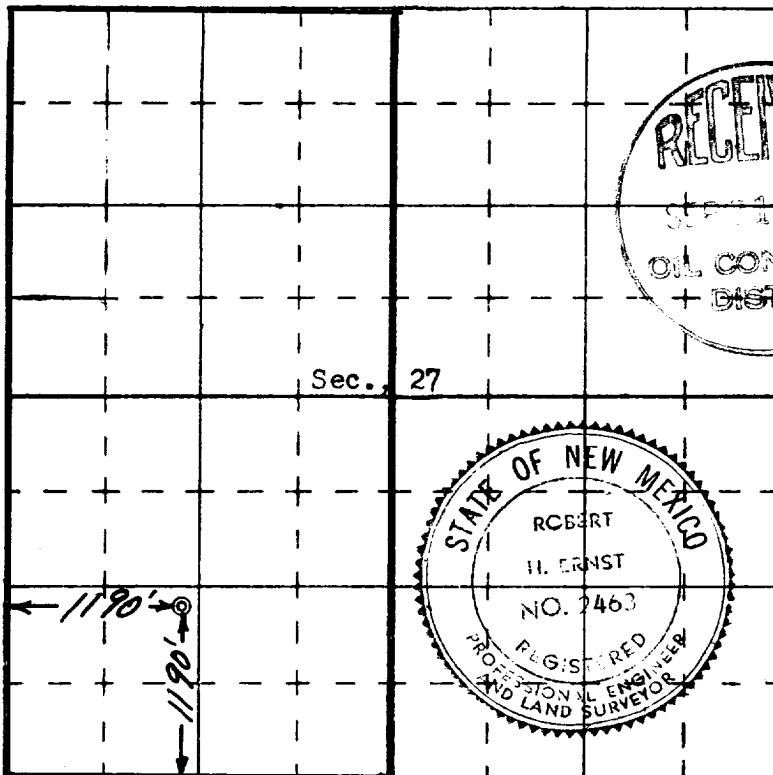
All distances must be from the outer boundaries of the Section

Operator <b>TENNECO OIL COMPANY</b>		Lease <b>SCHWERTFEGER COM</b>		Well No. <b>1</b>
Unit Letter <b>M</b>	Section <b>27</b>	Township <b>31 North</b>	Range <b>9 West</b>	County <b>San Juan County</b>
Actual Footage Location of Well:				
<b>1190</b>	feet from the	<b>South</b>	line and	<b>1190</b> feet from the <b>West</b> line
Ground Level Elev. <b>6083' ungraded</b>	Producing Formation <b>Basin Dakota</b>	Page <b>Basin Dakota</b>	Dedicated Acreage: <b>W/2</b> <b>11' 31.9' 80' 320</b> Acres	

1. Outline the acreage dedicated to the subject well by colored pencil or hatchure marks on the plat below.
  2. If more than one lease is dedicated to the well, outline each and identify the ownership thereof (both as to working interest and royalty).
  3. If more than one lease of different ownership is dedicated to the well, have the interests of all owners been consolidated by communitization, unitization, force-pooling, etc?
- (X) Yes ( ) No If answer is "yes," type of consolidation Communitization

If answer is "no," list the owners and tract descriptions which have actually consolidated (Use reverse side of this form if necessary.)

No allowable will be assigned to the well until all interests have been consolidated (by communitization, unitization, forced-pooling, or otherwise) or until a non standard unit, eliminating such interests, has been approved by the Commission.



Ernst Engineering Co.  
Durango, Colorado

**CERTIFICATION**

I hereby certify that the information contained herein is true and complete to the best of my knowledge and belief.

*M. K. Wagner*  
Name M. K. Wagner  
Position \_\_\_\_\_  
Company Tenneco Oil Company  
Date 9/18/67

I hereby certify that the well location shown on this plat was plotted from field notes of actual surveys made by me or under my supervision, and that the same is true and correct to the best of my knowledge and belief.

10 September 1967  
Date Surveyed

*Robert H. Ernst*  
Registered Professional Engineer  
and/or Land Surveyor

**Robert H. Ernst**  
**N. Mex. PE & LS 2463**  
Certificate No. \_\_\_\_\_