

Denny G. Frost
DEPUTY OIL & GAS INSPECTOR
1000 Rio Brazos Rd, Aztec, NM 87410

State of New Mexico
Energy, Minerals and Natural Resources Department

SUBMIT 1 COPY TO
APPROPRIATE
DISTRICT OFFICE
AND 1 COPY TO
SANTA FE OFFICE

District II
P O Drawer DD, Aztec, NM 87410

OIL CONSERVATION DIVISION

2040 South Pacheco Street
Santa Fe, New Mexico 87505

RECEIVED
OCT 31 1996

OIL CON. DIV.
FEB 3

PIT REMEDIATION AND CLOSURE REPORT

Operator: PNM Gas Services (SRC) **Telephone:** 324-3764

Address: 603 W. Elm Street Farmington, NM 87401

Facility or Well Name: Pierce #3

Location: Unit: O Sec. 30 T. 31 N R. 10 W County San Juan

Pit Type: Separator ☒ Dehydrator ☐ Other ☐

Land Type: BLM ☒ State ☐ Fee ☐ Other ☐

Pit Location: Pit dimensions: length 20 width 20 depth 4

(Attach diagram) Reference: wellhead ☒ other ☐

Footage from reference: 50'

Direction from reference: 0 Degrees ☐ East ☒ North ☐ South ☒ West ☐

Depth to Ground Water:

(Vertical distance from contaminants to
seasonal high water elevation of ground
water)

Less than 50 feet (20 points)
50 feet to 99 feet (10 points)
Greater than 100 feet (0 points) 0

Wellhead Protection Area:

(Less than 200 feet from a private
domestic water source, or, less than 1,000
feet from all other water sources)

Yes (20 points)
No (0 points) 0

Distance to Surface Water:

(Horizontal distance to perennial lakes,
ponds, rivers, streams, creeks, irrigation
canals and ditches)

Less than 200 feet (20 points)
200 feet to 1,000 feet (10 points)
Greater than 1,000 feet (0 points) 0

RANKING SCORE (TOTAL POINTS): 0

Date Remediation Started:

2/12/96

Date Completed:

2/19/96

Remediation Method:

Excavation

☒

Approx. Cubic Yard

430

(Check all appropriate sections)

Landfarmed

☒

Amount Landfarmed (cubic yds)

430

Other

Remediation Location:

(i.e., landfarmed onsite, name and location of offsite facility)

Onsite

☒

Offsite

Backfill Material Location:

General Description of Remedial Action:

Excavated contaminated soil to a pit size of 25'x29'x16' and landfarmed soil onsite within a bermed area at a depth of 6" to 12". Soil was aerated by plowing/disking until soil met regulatory levels.

Ground Water Encountered:

No

☒

Yes

Depth

Final Pit Closure Sampling:

(if multiple samples, attach sample result and diagram of sample locations and depths.)

Sample Location

5 pt. composite-4 side walls and center of pit bottom

Sample depth

16'

Sample date

2/13/96

Sample time

1:34:00 PM

Sample Results

Benzene (ppm)

0.2946

Total BTEX (ppm)

42.6367

Field headspace (ppm)

TPH

868.00

Method

418.1

Vertical Extent (ft)

Risk Assessment form attached

Yes

No

☒

Ground Water Sample:

Yes

No

☒

(If yes, attach sample results)

I HEREBY CERTIFY THAT THE INFORMATION ABOVE IS TRUE AND COMPLETE TO THE BEST OF MY KNOWLEDGE AND MY BELIEF

DATE

October 25, 1996

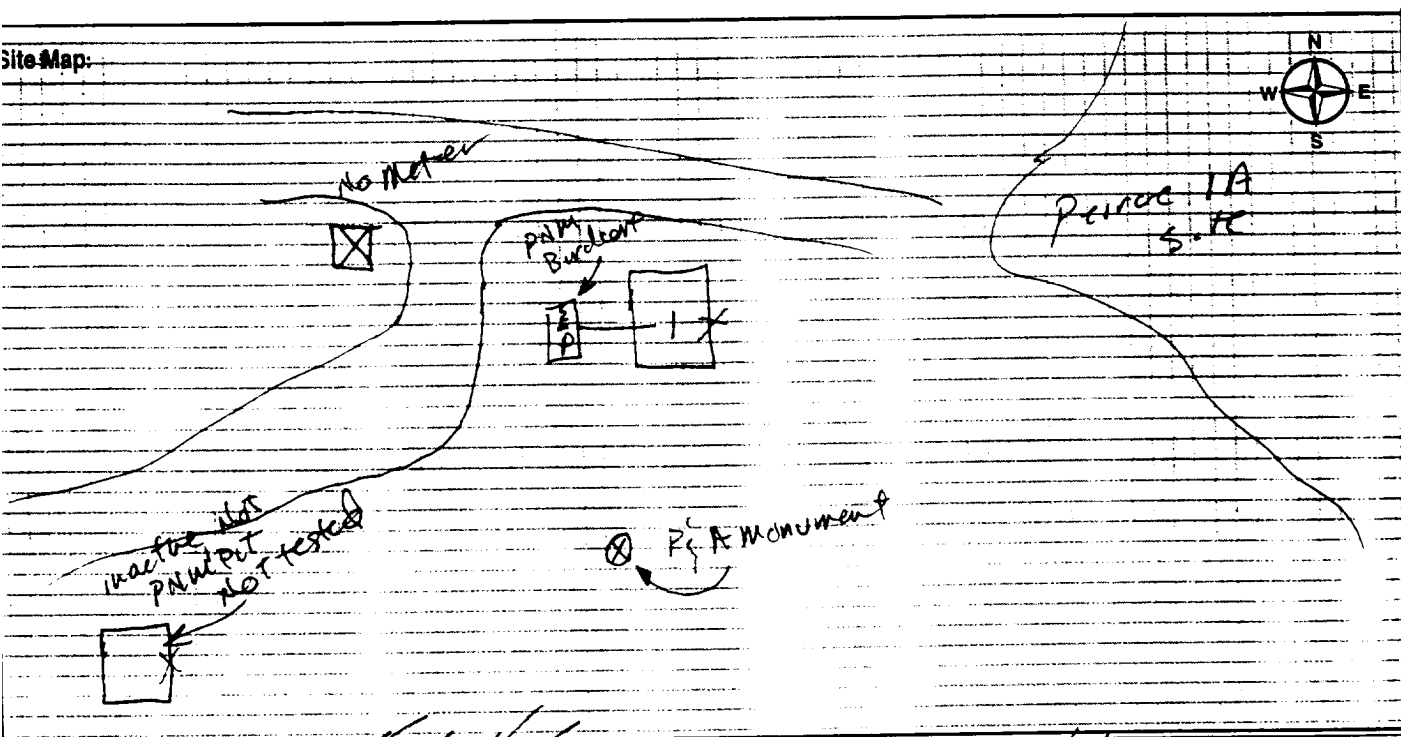
SIGNATURE

*Maureen Gannon*PRINTED NAME
AND TITLE

Maureen Gannon

Environmental Engineer

Site Map:



Assessor's Signature

[Handwritten Signature]

Date:

12/6/95

OFF: (505) 325-8786



LAB: (505) 325-5667

TOTAL PETROLEUM HYDROCARBONS

Attn: *Denver Bearden*
Company: *PNM Gas Services*
Address: *603 W. Elm*
City, State: *Farmington, NM 87401*

Date: *14-Feb-96*
COC No.: *4577*
Sample No. *10293*
Job No. *2-1000*

Project Name: *PNM Gas Services - Pierce #3*
Project Location: *9602131334; 4 Walls and Bottom Composite*
Sampled by: *RD* Date: *13-Feb-96* Time: *13:34*
Analyzed by: *HR* Date: *14-Feb-96*
Type of Sample: *Soil*

Laboratory Analysis

Laboratory Identification	Sample Identification	Total Petroleum Hydrocarbons
<i>10293-4577</i>	<i>PNM Gas Services - Pierce #3</i> <i>9602131334; 4 Walls and Bottom Composite</i>	<i>868 mg/kg</i>

Quality Assurance Report

Laboratory Identification	Analyzed Value	Acceptable Range	Units of Measure
<i>Laboratory Fortified Blank Soil - QCBS2</i>	<i>< 25</i>	<i>< 25</i>	<i>mg/kg</i>
<i>Laboratory Fortified Spike Soil - QCSS1</i>	<i>944</i>	<i>828 - 1024</i>	<i>mg/kg</i>

Method - *EPA Method 418.1 Total Petroleum Hydrocarbons*

Approved by: *DAF*

Date: *2/14/96*

P. O. BOX 2606 • FARMINGTON, NM 87499

— TECHNOLOGY BLENDING INDUSTRY WITH THE ENVIRONMENT —



OFF: (505) 325-8786

LAB: (505) 325-5667

AROMATIC VOLATILE ORGANICS

Attn: *Denver Bearden*
Company: *PNM Gas Services*
Address: *603 W. Elm*
City, State: *Farmington, NM 87401*

Date: *15-Feb-96*
COC No.: *4577*
Sample No. *10293*
Job No. *2-1000*

Project Name: *PNM Gas Services - Pierce #3*
Project Location: *9602131334; 4 Walls and Bottom Composite*
Sampled by: *RD* Date: *13-Feb-96* Time: *13:34*
Analyzed by: *HR* Date: *15-Feb-96*
Type of Sample: *Soil*

Aromatic Volatile Organics

Component	Result	Units of Measure	Detection Limit	Units of Measure
<i>Benzene</i>	<i>294.6</i>	<i>ug/kg</i>	<i>0.2</i>	<i>ug/kg</i>
<i>Toluene</i>	<i>7252.9</i>	<i>ug/kg</i>	<i>0.2</i>	<i>ug/kg</i>
<i>Ethylbenzene</i>	<i>3831.3</i>	<i>ug/kg</i>	<i>0.2</i>	<i>ug/kg</i>
<i>m,p-Xylene</i>	<i>29343.9</i>	<i>ug/kg</i>	<i>0.2</i>	<i>ug/kg</i>
<i>o-Xylene</i>	<i>1914.0</i>	<i>ug/kg</i>	<i>0.2</i>	<i>ug/kg</i>
	<i>TOTAL</i>	<i>42636.7</i>		<i>ug/kg</i>

Method - SW-846 EPA Method 8020 Aromatic Volatile Organics by Gas Chromatography

Approved by: *[Signature]*
Date: *2/15/96*

P. O. BOX 2606 • FARMINGTON, NM 87499

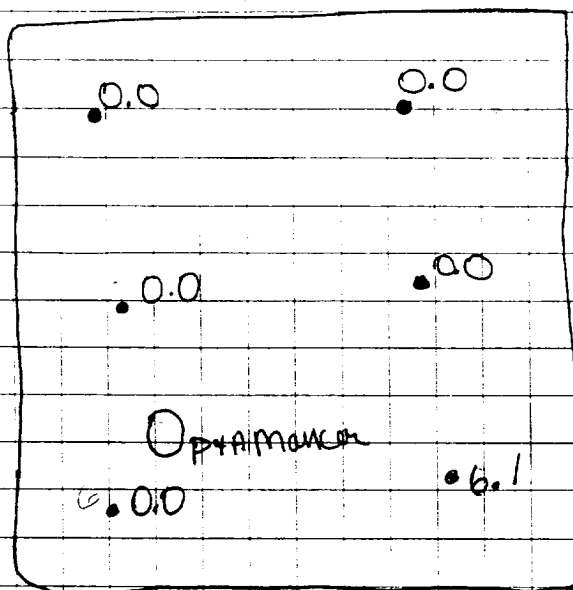
- TECHNOLOGY BLENDING INDUSTRY WITH THE ENVIRONMENT -

Pierce #3

7-2-96

Composite Sample # 960702.155

Soil Vapor Reading 20.4



Sampling Depth 2" - 12" deep.

OFF: (505) 325-5667



LAB: (505) 325-1556

Diesel Range Organics

Attn: *Denver Bearden*
Company: *PNM Gas Services*
Address: *603 W. Elm*
City, State: *Farmington, NM 87401*

Date: *10-Jul-96*
COC No.: *4903*
Sample No. *11399*
Job No. *2-1000*

Project Name: *PNM Gas Services - Pierce #3 Landfarm*
Project Location: *9607021155; 6pt. Composite, 2"-12" deep*
Sampled by: *GC* Date: *2-Jul-96* Time: *11:55*
Analyzed by: *DC* Date: *10-Jul-96*
Sample Matrix: *Soil*

Laboratory Analysis

<i>Parameter</i>	<i>Result</i>	<i>Unit of Measure</i>	<i>Detection Limit</i>	<i>Unit of Measure</i>
<i>Diesel Range Organics (C10 - C28)</i>	<i><5.0</i>	<i>mg/kg</i>	<i>5.0</i>	<i>mg/kg</i>

Quality Assurance Report

DRO QC No.: *0475-QC*

Calibration Check

<i>Parameter</i>	<i>Method Blank</i>	<i>Unit of Measure</i>	<i>True Value</i>	<i>Analyzed Value</i>	<i>% Diff</i>	<i>Limit</i>
<i>Diesel Range (C10 - C28)</i>	<i><5.0</i>	<i>ppm</i>	<i>2,000</i>	<i>2,048</i>	<i>2.4</i>	<i>15%</i>

Matrix Spike

<i>Parameter</i>	<i>1 - Percent Recovered</i>	<i>2 - Percent Recovered</i>	<i>Limit</i>	<i>%RSD</i>	<i>Limit</i>
<i>Diesel Range (C10-C28)</i>	<i>114</i>	<i>104</i>	<i>(70-130)</i>	<i>7</i>	<i>20%</i>

Method - SW-846 EPA Method 8015A mod. - Nonhalogenated Volatile Hydrocarbons by Gas Chromatography

Approved by: *[Signature]*
Date: *2/10/96*

P.O. BOX 2606 • FARMINGTON, NM 87499

- TECHNOLOGY BLENDING INDUSTRY WITH THE ENVIRONMENT -