

UNITED STATES
DEPARTMENT OF THE INTERIOR
BUREAU OF LAND MANAGEMENT

APPLICATION FOR PERMIT TO DRILL, DEEPEN, OR PLUG BACK

RECEIVED

MAY 29 1990

OIL CON. DIV.

DIST. 3

1a. TYPE OF WORK PLUG BACK	5. LEASE NUMBER SF-077652
1b. TYPE OF WELL GAS	6. IF INDIAN, ALL. OR TRIBE NAME
2. OPERATOR SOUTHLAND ROYALTY COMPANY	7. UNIT AGREEMENT NAME
3. ADDRESS & PHONE NO. OF OPERATOR P.O. BOX 4289 FARMINGTON, NM 87499 (505) 326-9700	8. FARM OR LEASE NAME EAST
4. LOCATION OF WELL 1160' FSL; 1560' FWL	9. WELL NO. #13
14. DISTANCE IN MILES FROM NEAREST TOWN	10. FIELD, POOL, OR WILDCAT BASIN FRUITLAND COAL
	11. SEC. T. R. M OR BLK. SEC 24, T31N, R12W
15. DISTANCE FROM PROPOSED LOCATION TO NEAREST PROPERTY OR LEASE LINE.	12. COUNTY SAN JUAN
16. ACRES IN LEASE	13. STATE NM
17. ACRES ASSIGNED TO WELL 320.00	
18. DISTANCE FROM PROPOSED LOCATION TO NEAREST WELL DR. COMPL., OR APPLIED FOR ON THIS LEASE.	20. ROTARY OR CABLE TOOLS
19. PROPOSED DEPTH	
21. ELEVATIONS (DF, FT, GR, ETC.) 6066' GL	22. APPROX. DATE WORK WILL START
23. PROPOSED CASING AND CEMENTING PROGRAM	
*SEE OPERATIONS PLAN	
24. AUTHORIZED BY: <i>[Signature]</i> (CJS) REGULATORY AFFAIRS	5-22-90 DATE

PERMIT NO. _____ APPROVAL DATE _____

APPROVED BY _____ TITLE _____ DATE _____

NOTE: THIS FORMAT IS ISSUED IN LIEU OF US BLM FORM 3160-3.
(NO ADDITIONAL DIRT WORK WILL BE REQUIRED)

APPROVED

MAY 24 1990

FOR

Ken Townsend
AREA MANAGER

NMOCC

Submit to Appropriate
District Office
State Leases - 4 copies
Fee Leases - 3 copies

State of New Mexico
Energy, Minerals and Natural Resources Department

Form C-102
Revised 1-1-89

OIL CONSERVATION DIVISION

DISTRICT I
P.O. Box 1980, Hobbs, NM 88240

P.O. Box 2088

Santa Fe, New Mexico 87504-2088

DISTRICT II
P.O. Drawer DD, Artesia, NM 88210

DISTRICT III
1000 Rio Brazos Rd., Aztec, NM 87410

WELL LOCATION AND ACREAGE DEDICATION PLAT

All Distances must be from the outer boundaries of the section

RECEIVED
MAY 23 1990
AM 7:57
FARMINGTON, NEW MEXICO

Operator Southland Royalty Company		Lease East (SF-077652)		Well No. 13	
Unit Letter N	Section 24	Township 31 North	Range 12 West	County San Juan	
Actual Footage Location of Well: 1160 feet from the South line and 1560 feet from the West line					
Ground level Elev. 6066'	Producing Formation Fruitland Coal		Pool Basin	Dedicated Acreage: 320 Acres	

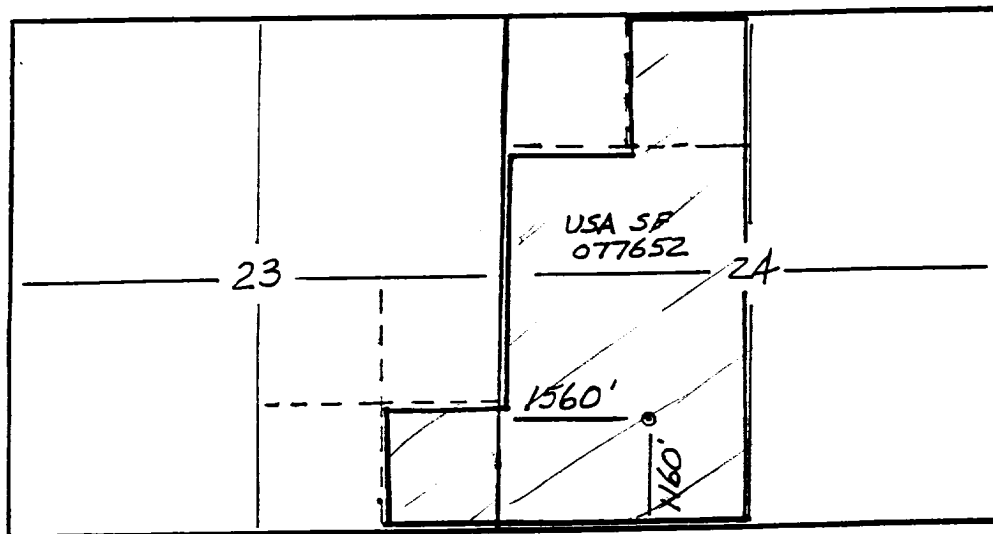
1. Outline the acreage dedicated to the subject well by colored pencil or hatchure marks on the plat below.
2. If more than one lease is dedicated to the well, outline each and identify the ownership thereof (both as to working interest and royalty).
3. If more than one lease of different ownership is dedicated to the well, have the interest of all owners been consolidated by communitization, unitization, force-pooling, etc.?

☐ Yes ☐ No If answer is "yes" type of consolidation _____
If answer is "no" list the owners and tract descriptions which have actually been consolidated. (Use reverse side of this form if necessary.) _____

No allowable will be assigned to the well until all interests have been consolidated (by communitization, unitization, forced-pooling, or otherwise) or until a non-standard unit, eliminating such interest, has been approved by the Division.

Prepared from a plat
dated 3-28-69 by
E. V. Echohawk.

RECEIVED
MAY 23 1990
OIL CON. DIV.
SANTA FE



OPERATOR CERTIFICATION

I hereby certify that the information contained herein is true and complete to the best of my knowledge and belief.

Peggy Bradfield
Signature

Peggy Bradfield

Printed Name

Regulatory Affairs

Position

Southland Royalty Co

Company

5-22-90

Date

SURVEYOR CERTIFICATION

I hereby certify that the well location shown on this plat was plotted from field notes of actual surveys made by me or under my supervision, and that the same is true and correct to the best of my knowledge and belief.

5-17-90

Date Surveyed

Neal E. Edwards

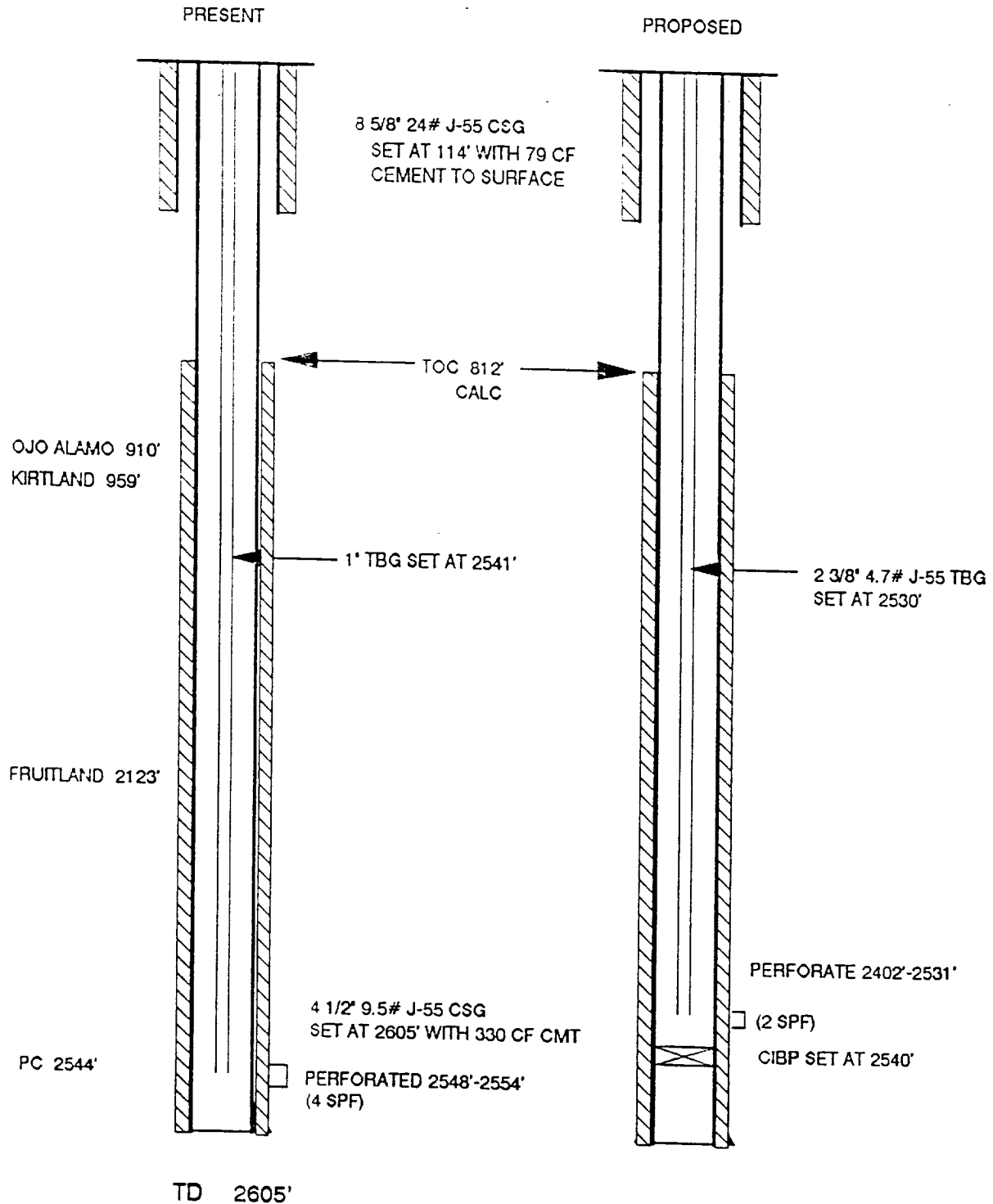
Signature of Professional Surveyor



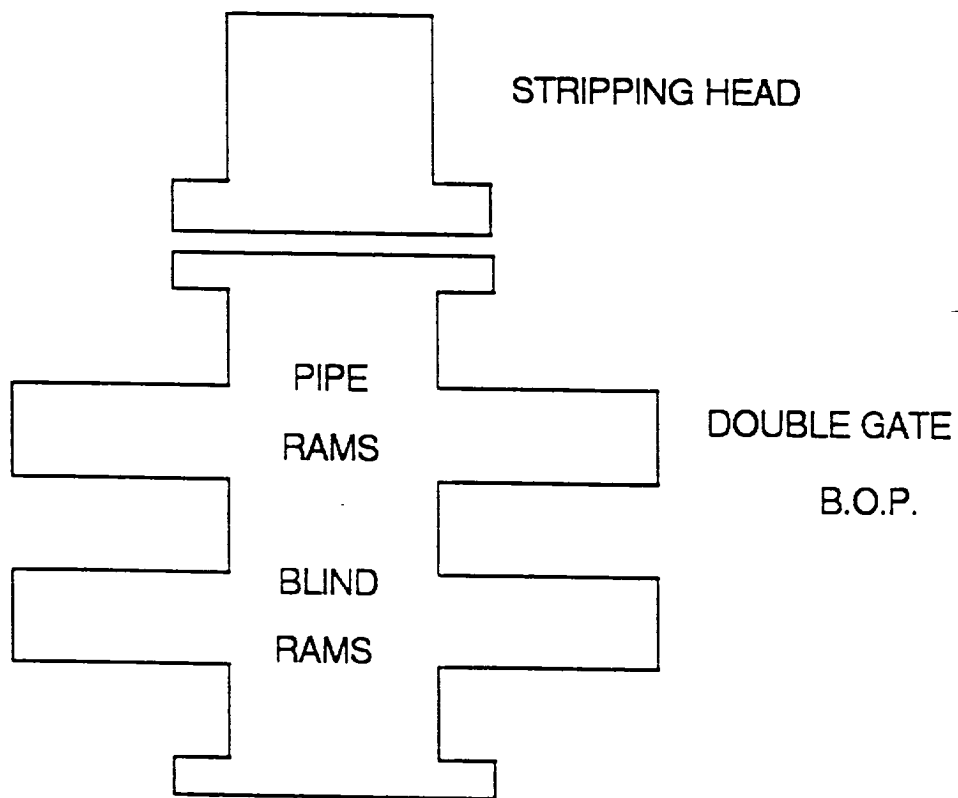
East #13
Procedure to Recomplete Fruitland Coal

1. Check location anchors.
2. MOL and rig up daylight pulling unit with rip pump and blow tank.
3. Kill PC with water as needed. ND wellhead. NU BOP. TOOH with 1" tubing.
4. Run CNL-GR-CCL. Set cast iron bridge plug at 2540'.
5. Pressure test casing to 3000 psi for 15 minutes.
6. Perforate the Fruitland Coal interval.
7. Pick up retrievable bridge plug and packer. TIH on 2 3/8" tubing. Isolate each coal interval and breakdown.
8. Fracture stimulate well.
9. Open well through variable choke and flow back slowly.
10. TIH with 2 3/8" tubing with expendable check on bottom. Blow well with air.
11. Obtain and record gauges. When returns dry up, TOOH with 2 3/8" tubing.
12. TIH with 2 3/8" 4.7# EUE tubing with pump out plug on bottom and common pump seating nipple one joint off bottom. Land tubing at 2530'. Nipple down BOP. Nipple up wellhead.

EAST #13
WELLBORE DIAGRAMS
UNIT N SECTION 24 T31N-R12W
FRUITLAND COAL RECOMPLETION



WORKOVER / RECOMPLETION B.O.P. SCHEMATIC



MINIMUM: 6" 2000 PSI DOUBLE GATE B.O.P.
MAXIMUM ANTICIPATED SHUT-IN WELLHEAD
PRESSURE IS LESS THAN 2000 PSI