

**NEW MEXICO OIL CONSERVATION COMMISSION
WELL LOCATION AND ACREAGE DEDICATION PLAT**

Form C-102
Supersedes C-128
Effective 1-1-65

All distances must be from the outer boundaries of the Section.

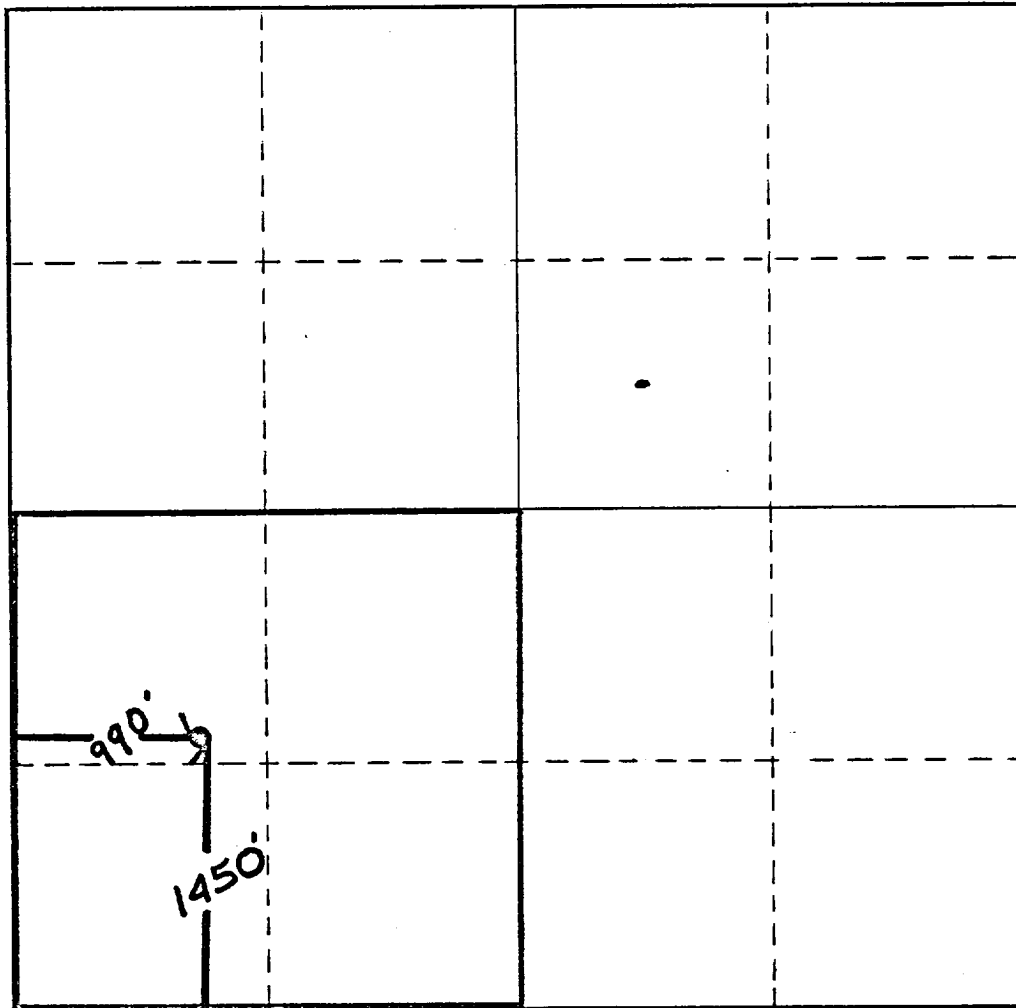
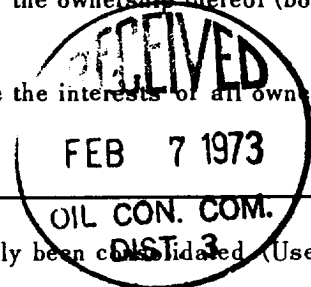
Operator Aztec Oil & Gas Company			Lease Cain B		Well No. #1
Unit Letter L	Section 20	Township 31 North	Range 10 West	County San Juan	
Actual Footage Location of Well:					
1450		feet from the South	line and	990 feet from the West line	
Ground Level Elev: 6004	Producing Formation Pictured Cliffs		Pool Blanco		Dedicated Acreage: 162.44 Acres

1. Outline the acreage dedicated to the subject well by colored pencil or hachure marks on the plat below.
2. If more than one lease is dedicated to the well, outline each and identify the ownership thereof (both as to working interest and royalty).
3. If more than one lease of different ownership is dedicated to the well, have the interests of all owners been consolidated by communitization, unitization, force-pooling, etc?

☐ Yes ☐ No If answer is "yes," type of consolidation _____

If answer is "no," list the owners and tract descriptions which have actually been consolidated (Use reverse side of this form if necessary.) _____

No allowable will be assigned to the well until all interests have been consolidated (by communitization, unitization, forced-pooling, or otherwise) or until a non-standard unit, eliminating such interests, has been approved by the Commission.



CERTIFICATION

I hereby certify that the information contained herein is true and complete to the best of my knowledge and belief.

Joe C. Salmon
Name

Joe C. Salmon

Position

District Superintendent

Company

Aztec Oil & Gas Company

Date

February 1, 1973

I hereby certify that the well location shown on this plat was plotted from field notes of actual surveys made by me or under my supervision, and that the same is true and correct to the best of my knowledge and belief.

Date Surveyed

Registered Professional Engineer
and/or Land Surveyor

Certificate No.