

State of New Mexico  
Energy, Minerals and Natural Resources Department  
Oil Conservation Division

Sundry Notices and Reports on Wells

1. Type of Well  
GAS

2. Name of Operator

**MERIDIAN OIL**

3. Address & Phone No. of Operator

PO Box 4289, Farmington, NM 87499 (505) 326-9700

4. Location of Well, Footage, Sec., T, R, M

990' FSL, 1090' FEL, Sec. 24, T-31-N, R-12-W, NMPM, San Juan County

API # (assigned by OCD)  
30-045-20481

5. Lease Number  
Fee

6. State Oil & Gas Lease #

7. Lease Name/Unit Name  
Oliver

8. Well No.  
2

9. Pool Name or Wildcat  
Aztec Pictured Cliffs

10. Elevation:

Type of Submission

☒ Notice of Intent  
☐ Subsequent Report  
☐ Final Abandonment


Type of Action

☒ Abandonment  
☐ Recompletion  
☐ Plugging Back  
☐ Casing Repair  
☐ Altering Casing  
☐ Other -  
☐ Change of Plans  
☐ New Construction  
☐ Non-Routine Fracturing  
☐ Water Shut off  
☐ Conversion to Injection

13. Describe Proposed or Completed Operations

It is intended to plug and abandon the subject well according to the attached procedure and wellbore diagram.

SIGNATURE

 (LWD4) Regulatory Affairs July 5, 1995

(This space for State Use)

Approved by

DEPUTY OIL & GAS INSPECTOR, DIST. 43  
Title

Date JUL - 6 1995

## PLUG & ABANDONMENT PROCEDURE

6/14/95

Oliver #2

Aztec Pictured Cliffs  
Section 24, T-31-N, R-12-W  
San Juan County, New Mexico

Note: Contact BLM 24 hrs prior to plugging operation (BLM: 326-6201 and NMOCD: 327-5344). All cement volumes use 50' excess inside pipe. The stabilizing wellbore fluid will be 8.3 ppg, sufficient to balance all exposed formation pressures.

1. Install and test location rig anchors. Prepare blow pit. Comply to all NMOCD, BLM, and MOI regulations.
2. MOL and RU daylight pulling unit. Conduct safety meeting for all personnel on location. NU relief line. Blow down well and kill with water as necessary. ND wellhead and NU BOP. Test BOP.
3. POH and LD 1" tubing (116 jts). PU 2-3/8" tubing workstring and RIH with 4-1/2" 9.5# casing scraper or gauge ring to 2485'; POH.
4. **Plug #1 (Pictured Cliffs perforations and Fruitland top: 2485' - 1952')**: PU 4-1/2" cement retainer and RIH; set at 2405'. Pressure test tubing to 1000#, Establish rate into Pictured Cliffs perms. Mix and pump 53 sxs Class B cement. Squeeze 14 sxs cement below cement retainer from 2485' to 2405' over Pictured Cliffs perms. Sting out of retainer and leave 39 sxs on top of retainer to 1952'. Pressure test casing to 500#. POH with setting tool.
5. **Plug #2 (Kirtland and Ojo Alamo tops: 930' - 733')**: Mix 20 sxs of Class B cement and spot a balanced plug from 930' to 733'. TOOH.
6. **Plug #3 (164' - Surface)**: Perforate 4 squeeze holes at 164' through 4-1/2" csg. Mix and pump approximately 43 sxs Class B cement down 4-1/2" casing. Circulate good cement out bradenhead valve. POH and LD workstring.
7. ND BOP and cut off all three casing strings below surface casing. Install P&A marker with cement to comply with regulations. RD, move off location, cut off anchors, and restore location.

Recommended:   
Summer Engineering Intern

Approval: \_\_\_\_\_  
Production Superintendent

PET

# OLIVER #2

PROPOSED P&A

AZTEC PICTURED CLIFFS

DPNO 55522

990' FSL, 1090' FEL, SECTION 24, T31N, R12W

SAN JUAN COUNTY, NEW MEXICO

Today's Date: 6/14/95  
Spud: 5/1/69  
Completed: 5/9/69

12-1/4" Hole

Plug #3 164' - Surface

6 sxs 4-1/2" x 6-3/4"  
24 sxs 4-1/2" x 8-5/8"  
13 sxs cement

8-5/8" 24# csg set @ 114'  
Circ. cmt to surface

Perf @ 164'

TOC @ 760' Est. 75%

Ojo Alamo @ 783'

Plug #2 930' - 733'  
20 sxs

Kirtland @ 880'

Fruitland @ 2002'

Plug #1 2485' - 1952'  
14 sxs below  
39 sxs above

CR @ 2405'

Pictured Cliffs @ 2465'

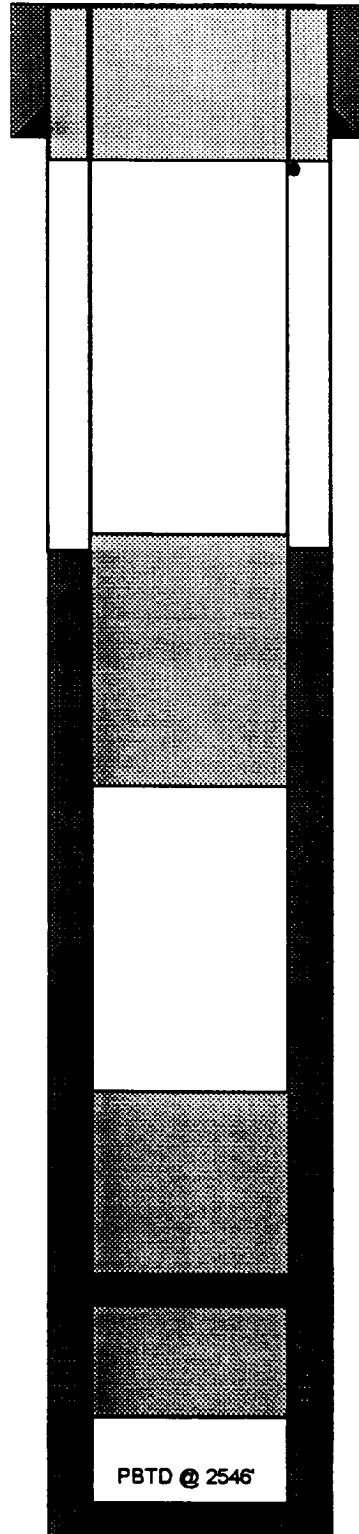
Perforations @ 2455'-58', 2463'-77',  
2480'-85' with 4 SPF

PBTD @ 2546'

6-3/4" Hole

TD @ 2555'

4-1/2" 9.5# csg set @ 2550'  
Cmt to 760' w/330 cf



# PERTINENT DATA SHEET

6/19/95

<b>WELLNAME:</b> Oliver #2				<b>DP NUMBER:</b> 55522  <b>PROPERTY NUMBER:</b> 0023314					
<b>WELL TYPE:</b> Aztec Pictured Cliffs				<b>ELEVATION:</b> GL: 5973' KB: 5987'					
<b>LOCATION:</b> 990' FSL, 1090' FEL Sec. 24, T31N, R12W San Juan County, New Mexico				<b>INITIAL POTENTIAL:</b> 2,342 Mcf/d  <b>INITIAL SICP:</b> 175 psig <b>CURRENT SICP:</b> psig					
<b>OWNERSHIP:</b> GWI: 25.0000% NRI: 21.8125% SJBT: 75.0000%				<b>DRILLING:</b> SPUD DATE: 5/1/69 COMPLETED: 5/9/69 TOTAL DEPTH: 2555' PBTD: 2546'					
<b>CASING RECORD:</b>									
<u>HOLE SIZE</u>	<u>SIZE</u>	<u>WEIGHT</u>	<u>GRADE</u>	<u>DEPTH</u>	<u>EQUIP.</u>	<u>CEMENT</u>	<u>TOC</u>		
12-1/4"	8-5/8"	24#		114'		50 sx	Surf-circ.		
6-3/4"	4-1/2"	9.5#		2550'		250 sx	760' Est. 75%		
Tubing	1"			2436'	116 jts.				
<b>FORMATION TOPS:</b> Ojo Alamo 783' Kirtland 880' Fruitland Coal 2002' Pictured Cliffs 2465'									
<b>LOGGING:</b> ES Induction									
<b>PERFORATIONS</b> 2455'-58', 2463'-77', 2480'-85', 4 SPF									
<b>STIMULATION:</b> Frac with 27,720 gal. water and 25,000# 10/20 sand									
<b>WORKOVER HISTORY:</b> None									
<table style="width: 100%;"> <tr> <td style="width: 50%; vertical-align: top;"> <b>PRODUCTION HISTORY:</b>            Cumulative as of 1995: <u>Gas</u> 372.7 MMcf            Current: <u>Gas</u> 7.4 Mcf/d                                              <u>Oil</u> 0 bo                                              <u>Oil</u> 0 bo         </td> <td style="width: 50%; vertical-align: top;"> <b>DATE OF LAST PRODUCTION:</b>            April, 1995  <u>Gas</u> 7.4 Mcf/d  <u>Oil</u> 0 bo         </td> </tr> </table>								<b>PRODUCTION HISTORY:</b> Cumulative as of 1995: <u>Gas</u> 372.7 MMcf Current: <u>Gas</u> 7.4 Mcf/d <u>Oil</u> 0 bo <u>Oil</u> 0 bo	<b>DATE OF LAST PRODUCTION:</b> April, 1995 <u>Gas</u> 7.4 Mcf/d <u>Oil</u> 0 bo
<b>PRODUCTION HISTORY:</b> Cumulative as of 1995: <u>Gas</u> 372.7 MMcf Current: <u>Gas</u> 7.4 Mcf/d <u>Oil</u> 0 bo <u>Oil</u> 0 bo	<b>DATE OF LAST PRODUCTION:</b> April, 1995 <u>Gas</u> 7.4 Mcf/d <u>Oil</u> 0 bo								
<b>PIPELINE:</b> EPNG									

# OLIVER #2

CURRENT

AZTEC PICTURED CLIFFS

DPNO 55522

990' FSL, 1090' FEL, SECTION 24, T31N, R12W

SAN JUAN COUNTY, NEW MEXICO

Today's Date: 6/14/95  
Spud: 5/1/69  
Completed: 5/9/69

12-1/4" Hole

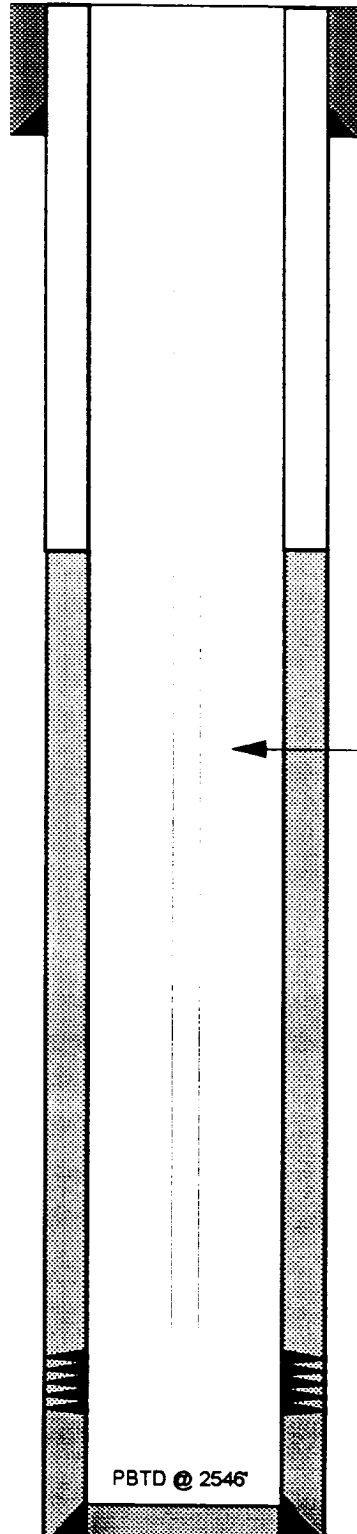
Ojo Alamo @ 783'

Kirtland @ 880'

Fruitland @ 2002'

Pictured Cliffs @ 2465'

6-3/4" Hole



8-5/8" 24# csg set @ 114'  
Circ. cmt to surface

TOC @ 760' Est. 75%

1" tbg set @ 2436'

Perforations @ 2455'-58', 2463'-77',  
2480'-85' with 4 SPF

PBTD @ 2546'

TD @ 2555'

4-1/2" 9.5# csg set @ 2550'  
Cmt to 760' w/330 cf