

UNITED STATES
DEPARTMENT OF THE INTERIOR
GEOLOGICAL SURVEY

30-~~245~~-20487

APPLICATION FOR PERMIT TO DRILL, DEEPEN, OR PLUG BACK

1a. TYPE OF WORK
DRILL DEEPEN PLUG BACK

b. TYPE OF WELL
OIL WELL GAS WELL OTHER
SINGLE ZONE MULTIPLE ZONE

2. NAME OF OPERATOR
Aztec Oil and Gas

3. ADDRESS OF OPERATOR
Drawer 570, Farmington, New Mexico

4. LOCATION OF WELL (Report location clearly and in accordance with any State requirements.)*
At surface *990 FSL & 990 FWL, Sec. 21-32N-8W*
At proposed prod. zone

14. DISTANCE IN MILES AND DIRECTION FROM NEAREST TOWN OR POST OFFICE*

16. DISTANCE FROM PROPOSED* LOCATION TO NEAREST PROPERTY OR LEASE LINE, FT. (Also to nearest drlg. unit line, if any)

18. NO. OF ACRES IN LEASE

17. NO. OF ACRES ASSIGNED TO THIS WELL
320

18. DISTANCE FROM PROPOSED LOCATION* TO NEAREST WELL, DRILLING, COMPLETED, OR APPLIED FOR, ON THIS LEASE, FT.

19. PROPOSED DEPTH
8400

20. ROTARY OR CABLE TOOLS
rotary

21. ELEVATIONS (Show whether DF, RT, GR, etc.)
6674 Gr

22. APPROX. DATE WORK WILL START*

23. PROPOSED CASING AND CEMENTING PROGRAM

SIZE OF HOLE	SIZE OF CASING	WEIGHT PER FOOT	SETTING DEPTH	QUANTITY OF CEMENT
15"	10-3/4"	32.75#	300'	150 sx
9-7/8"	7-5/8"	26.40#	3800'	300 sx
6-3/4"	4-1/2"	10.5# & 11.6#	8400'	600 sx

Propose to:

*Drill 15" hole and set 10-3/4" casing at 300' cement with 150 sx
Drill 9-7/8" hole and set 7-5/8" at 3800' cement with 300 sx
Drill with gas a 6-3/4" hole from 3800 to TD 8400', run 4 1/2" liner to TD cement with 600 sx
Perforate and frac Mesaverde and Dakota zones
Run Baker Model "D" production packer
Run 2-3/8" tubing*

Proration unit: *S/2 Sec. 21-32N-8W - 320 ac.*

IN ABOVE SPACE DESCRIBE PROPOSED PROGRAM: If proposal is to deepen or plug back, give data on present productive zone. If proposal is to drill or deepen directionally, give pertinent data on subsurface locations and measured and true vertical depths. Give blowout preventer program, if any.

24. SIGNED *Jue O. Salmon* TITLE *District Superintendent* DATE *5-8-69*

(This space for Federal or State office use)

PERMIT NO. _____ APPROVAL DATE _____

APPROVED BY *MA* TITLE _____ DATE _____

CONDITIONS OF APPROVAL, IF ANY:

5. LEASE DESIGNATION AND SERIAL NO.
NM - 0558144

6. IF INDIAN, ALLOTTEE OR TRIBE NAME

7. UNIT AGREEMENT NAME

8. FARM OR LEASE NAME
Trail Canyon

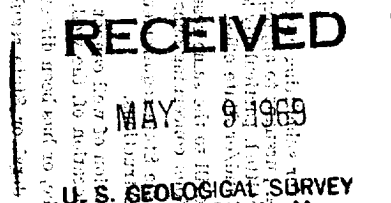
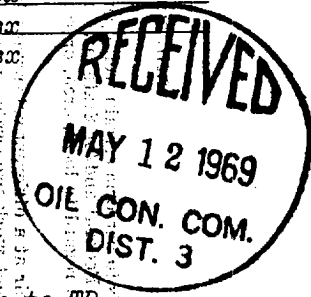
9. WELL NO.
1

10. FIELD AND POOL, OR WILDCAT
Blanco Mesaverde-Basin Dakota

11. SEC., T., R., M., OR BLK. AND SURVEY OR AREA
Sec. 21-32N-8W

12. COUNTY OR PARISH
San Juan

13. STATE
New Mexico



NEW MEXICO OIL CONSERVATION COMMISSION
WELL LOCATION AND ACREAGE DEDICATION PLAT

Form C-102
Supersedes C-128
Effective 1-1-65

All distances must be from the outer boundaries of the Section.

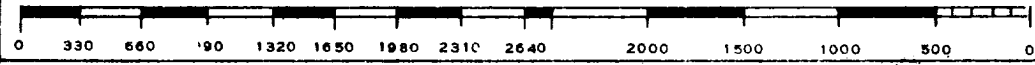
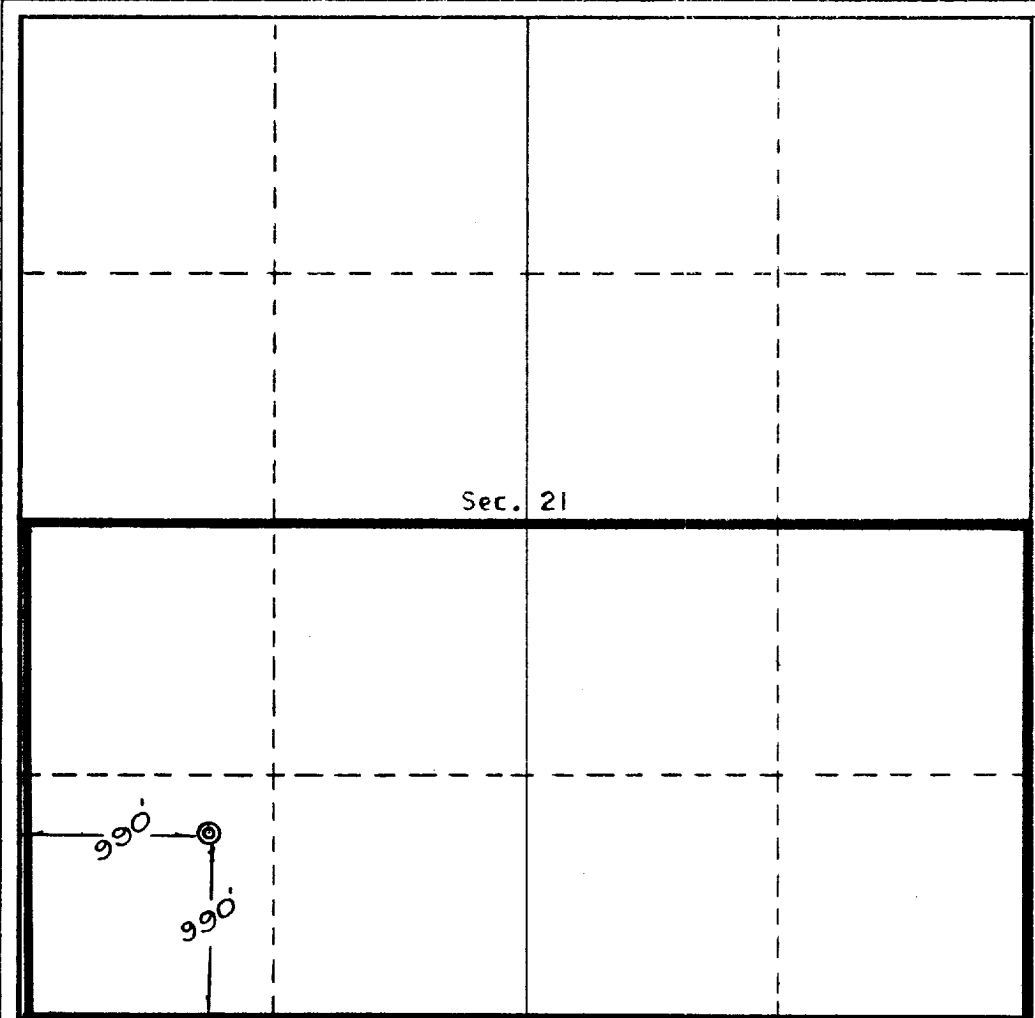
Operator AZTEC OIL & GAS COMPANY		Lease Trail Canyon		Well No. 1
Unit Letter M	Section 21	Township 32 North	Range 8 West	County San Juan
Actual Footage Location of Well: 990 feet from the South line and 990 feet from the West line				
Ground Level Elev. 6674	Producing Formation Mezquero-Dakota	Pool Blanco Mezquero Basin Dakota	Dedicated Acreage: 330 Acres	

1. Outline the acreage dedicated to the subject well by colored pencil or hachure marks on the plat below.
2. If more than one lease is dedicated to the well, outline each and identify the ownership thereof (both as to working interest and royalty).
3. If more than one lease of different ownership is dedicated to the well, have the interests of all of them been consolidated by communitization, unitization, force-pooling, etc?

Yes No If answer is "yes," type of consolidation _____

If answer is "no," list the owners and tract descriptions which have actually been consolidated. (Use DIST side of this form if necessary.) _____

No allowable will be assigned to the well until all interests have been consolidated (by communitization, unitization, forced-pooling, or otherwise) or until a non-standard unit, eliminating such interests, has been approved by the Commission.



CERTIFICATION

I hereby certify that the information contained herein is true and complete to the best of my knowledge and belief.

Name
Joe C. Salmon

Position
District Superintendent

Company
Astec Oil and Gas

Date
May 8, 1969

I hereby certify that the well location shown on this plat was plotted from field notes of actual surveys made by me or under my supervision, and that the same is true and correct to the best of my knowledge and belief.

Date Surveyed
April 17, 1969

Registered Professional Engineer and/or Land Surveyor
E. V. [Signature]

Certificate No. **3602**

