

UNITED STATES  
DEPARTMENT OF THE INTERIOR  
GEOLOGICAL SURVEY

## APPLICATION FOR PERMIT TO DRILL, DEEPEN, OR PLUG BACK

## 1a. TYPE OF WORK

DRILL ☒DEEPEN ☐PLUG BACK ☐

## b. TYPE OF WELL

OIL  
WELL ☐GAS  
WELL ☒

OTHER

SINGLE  
ZONE ☒MULTIPLE  
ZONE ☐

## 2. NAME OF OPERATOR

Aztec Oil and Gas Company

## 3. ADDRESS OF OPERATOR

Drawer 570 1/2 Farmington, New Mexico

## 4. LOCATION OF WELL (Report location clearly and in accordance with any State requirements\*)

At surface

950 FNL &amp; 1480 FWL, Sec. 25-31N-12W

At proposed prod. zone

## 14. DISTANCE IN MILES AND DIRECTION FROM NEAREST TOWN OR POST OFFICE\*

## 15. DISTANCE FROM PROPOSED\*

LOCATION TO NEAREST

PROPERTY OR LEASE LINE, FT.

(Also to nearest drilg. unit line, if any)

## 16. NO. OF ACRES IN LEASE

17. NO. OF ACRES ASSIGNED  
TO THIS WELL

160

## 18. DISTANCE FROM PROPOSED LOCATION\*

TO NEAREST WELL, DRILLING, COMPLETED,  
OR APPLIED FOR, ON THIS LEASE, FT.

## 19. PROPOSED DEPTH

2570

## 20. ROTARY OR CABLE TOOLS

rotary

## 21. ELEVATIONS (Show whether DF, RT, GR, etc.)

6009 Gr

## 22. APPROX. DATE WORK WILL START\*

## 23.

## PROPOSED CASING AND CEMENTING PROGRAM

SIZE OF HOLE	SIZE OF CASING	WEIGHT PER FOOT	SETTING DEPTH	QUANTITY OF CEMENT
12-1/4"	8-5/8"	24#	115'	50 sz
6-3/4"	4-1/2"	9.5#	2570'	250 sz

Propose to:

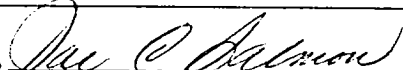
Drill 12-1/4" hole to 115', set 8-5/8" casing cement with 50 sz  
Drill to TD of 2570' a 6-3/4" hole, set 4 1/2" casing and cement w/250 sz  
Run Induction Electric log  
Perforate and frac Pictured Cliffs  
Run 1" tubing

Proration unit: NW/4 Sec. 25-31N-12W - 160 ac.

IN ABOVE SPACE DESCRIBE PROPOSED PROGRAM: If proposal is to deepen or plug back, give data on present productive zone and proposed new productive zone. If proposal is to drill or deepen directionally, give pertinent data on subsurface locations and measured and true vertical depths. Give blowout preventer program, if any.

## 24.

SIGNED



TITLE District Superintendent

DATE 5-8-69

(This space for Federal or State office use)

PERMIT NO.

APPROVAL DATE

APPROVED BY

CONDITIONS OF APPROVAL, IF ANY:

TITLE

DATE



**NEW MEXICO OIL CONSERVATION COMMISSION  
WELL LOCATION AND ACREAGE DEDICATION PLAT**

Form C-102  
Supersedes C-128  
Effective 1-4-65

All distances must be from the outer boundaries of the Section.

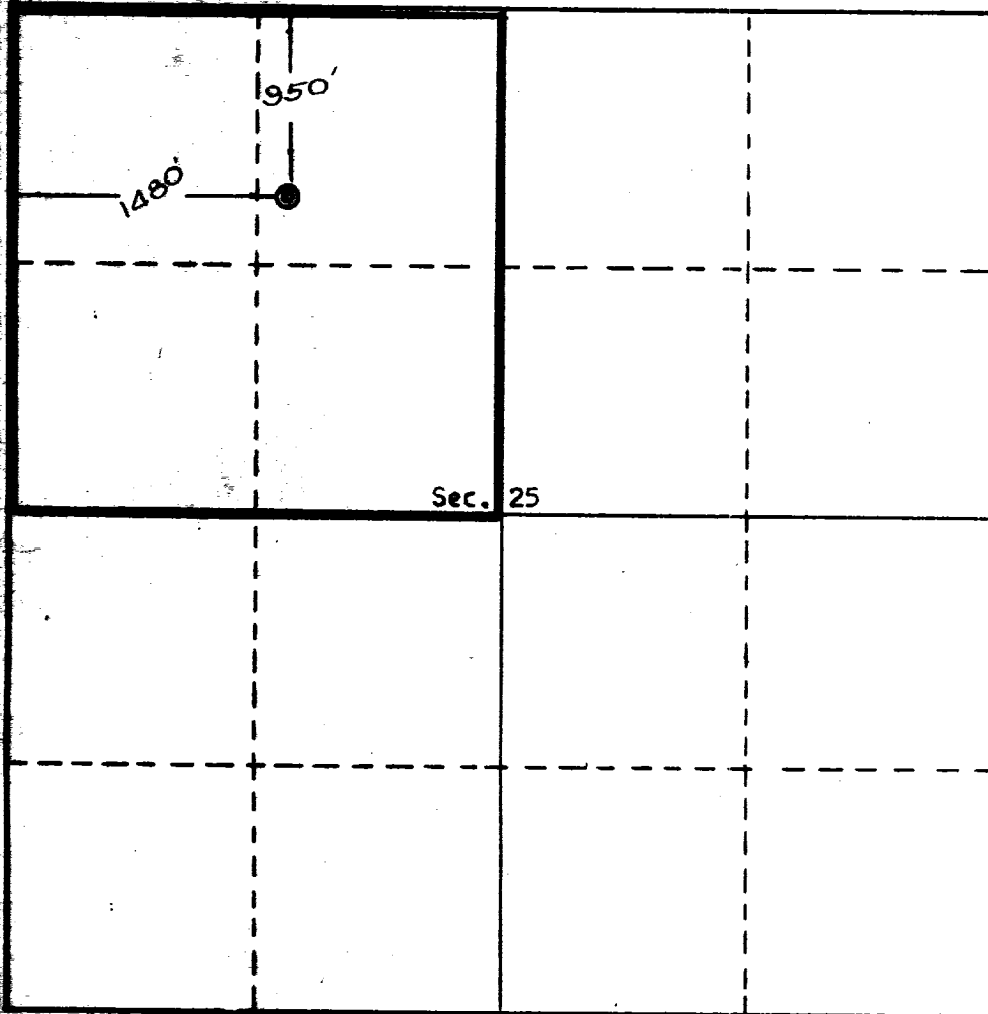
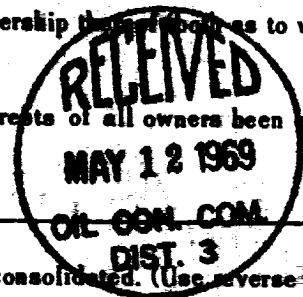
<b>AZTEC OIL &amp; GAS COMPANY</b>				Lease		Well No. <b>16</b>	
Unit Letter <b>C</b>	Section <b>25</b>	Township <b>31 North</b>	Range <b>12 West</b>	County <b>San Juan</b>			
Actual Footage Location of Well: <b>950</b> feet from the <b>North</b> line and <b>1480</b> feet from the <b>West</b> line							
Ground Level Elev. <b>6009</b>	Producing Formation <b>Pictured Cliffs</b>		Pool		Dedicated Acreage <b>1.60</b>		Acreage

1. Outline the acreage dedicated to the subject well by colored pencil or hatchure marks on the plat below.
2. If more than one lease is dedicated to the well, outline each and identify the ownership thereof as to working interest and royalty).
3. If more than one lease of different ownership is dedicated to the well, have the interests of all owners been consolidated by communitization, unitization, force-pooling, etc?

☐ Yes ☐ No If answer is "yes," type of consolidation \_\_\_\_\_

If answer is "no," list the owners and tract descriptions which have actually been consolidated. (Use reverse side of this form if necessary.) \_\_\_\_\_

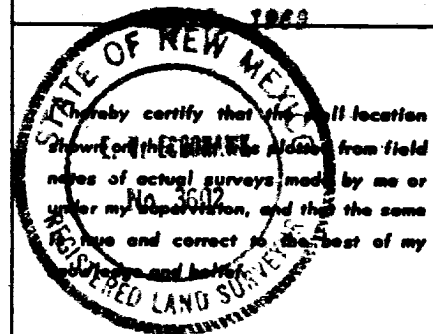
No allowable will be assigned to the well until all interests have been consolidated (by communitization, unitization, forced-pooling, or otherwise) or until a non-standard unit, eliminating such interests, has been approved by the Commission.



**CERTIFICATION**

I hereby certify that the information contained herein is true and complete to the best of my knowledge and belief.

Name \_\_\_\_\_  
Position **Joe C. Salton**  
**District Superintendent**  
Company \_\_\_\_\_  
Date **Inter Oil and Gas**



Date Surveyed  
**March 27, 1969**  
Registered Professional Engineer  
and/or Land Surveyor

*E. J. [Signature]*  
Certificate No. **3602**

