

UNITED STATES
DEPARTMENT OF THE INTERIOR
GEOLOGICAL SURVEY

APPLICATION FOR PERMIT TO DRILL, DEEPEN, OR PLUG BACK

1a. TYPE OF WORK

DRILL ☒DEEPEN ☐PLUG BACK ☐

b. TYPE OF WELL

OIL
WELL ☐GAS
WELL ☒

OTHER

SINGLE
ZONE ☐MULTIPLE
ZONE ☒

2. NAME OF OPERATOR

Aztec Oil and Gas

3. ADDRESS OF OPERATOR

Drawer 570, Farmington, New Mexico

4. LOCATION OF WELL (Report location clearly and in accordance with any State requirements.)*

At surface

1150 FSL & 900 FWL, Sec. 24-32N-8W

At proposed prod. zone

14. DISTANCE IN MILES AND DIRECTION FROM NEAREST TOWN OR POST OFFICE*

15. DISTANCE FROM PROPOSED*

LOCATION TO NEAREST
PROPERTY OR LEASE LINE, FT.
(Also to nearest drg. unit line, if any)

16. NO. OF ACRES IN LEASE

18. PROPOSED DEPTH

8400

17. NO. OF ACRES ASSIGNED
TO THIS WELL

320

20. ROTARY OR CABLE TOOLS

rotary

21. ELEVATIONS (Show whether DF, RT, GR, etc.)

6667

22. APPROX. DATE WORK WILL START*

23.

PROPOSED CASING AND CEMENTING PROGRAM

SIZE OF HOLE	SIZE OF CASING	WEIGHT PER FOOT	SETTING DEPTH	QUANTITY OF CEMENT
15"	10-3/4"	32.25#	300'	150 sx
9-7/8"	7-5/8"	26.40#	3800'	300 sx
6-3/4"	4-1/2"	10.5# & 11.6#	8400'	600 sx

Propose to:

Drill 15" hole and set 10-3/4" surface casing at 300' cement w/150 sx
Drill 9-7/8" hole and set 7-5/8" intermediate at 3800' cement w/300 sx
Drill w/gas a 6-3/4" hole to TD 8400 from 3800, run 4 1/2" liner to TD
cement w/600 sx

Perforate and frac Mesaverde and Dakota zones
Run Baker Model "D" production packer
Run 1-1/2" tubing.

Proration unit: W/2 Sec. 24-32N-8W - 320 ac.

IN ABOVE SPACE DESCRIBE PROPOSED PROGRAM: If proposal is to deepen or plug back, give data on present productive zone and proposed new productive zone. If proposal is to drill or deepen directionally, give pertinent data on subsurface locations and measured and true vertical depths. Give blowout preventer program, if any.

24.

SIGNED

TITLE District Superintendent

DATE 7-1-69

(This space for Federal or State office use)

PERMIT NO.

APPROVAL DATE

APPROVED BY

TITLE

DATE

CONDITIONS OF APPROVAL, IF ANY:



NEW MEXICO OIL CONSERVATION COMMISSION
WELL LOCATION AND ACREAGE DEDICATION PLAT

Form 1-11
Supersedes C-128
Effective 1-1-65

All distances must be from the outer boundaries of the Section

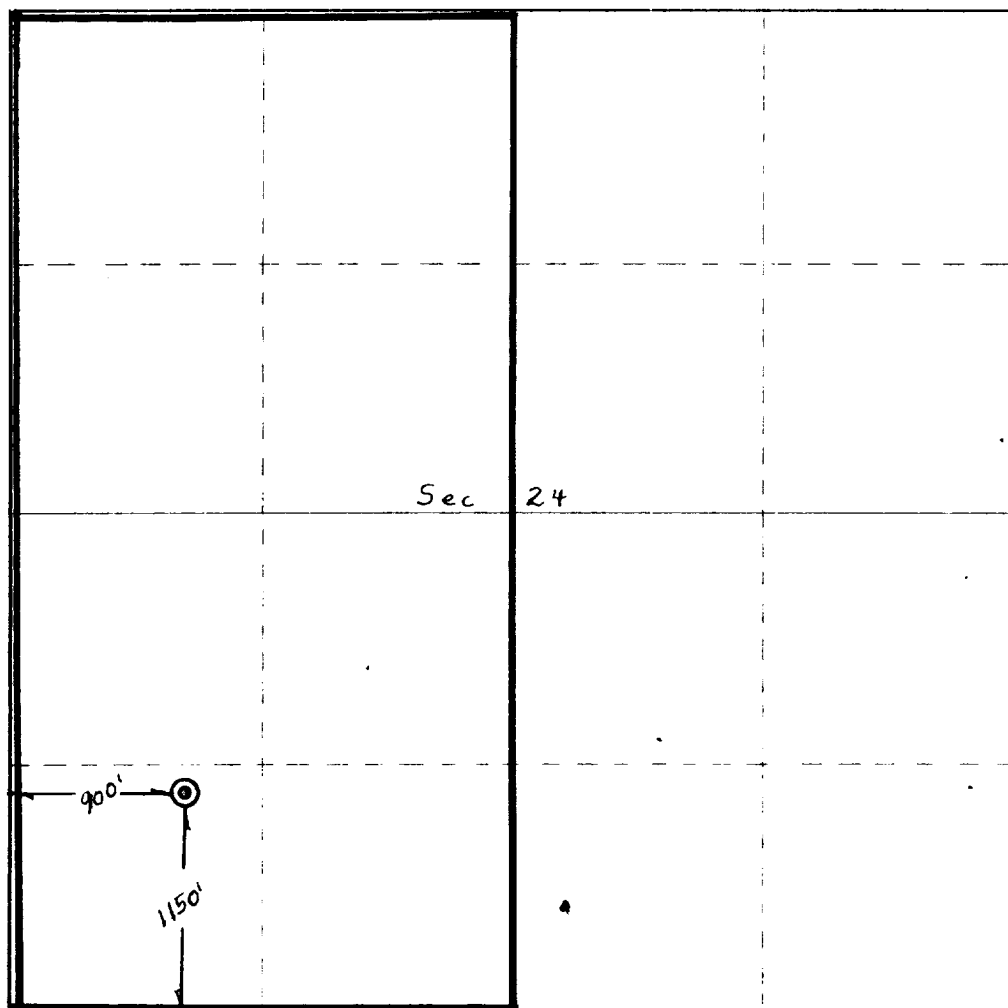
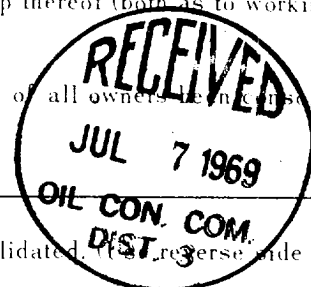
Owner Aztec Oil & Gas Company			Section 24		Well No. 1
Section M	Section 24	Section 32N	Section 8W	County San Juan	
Acres of the Section of Well 1150 Section South Section 900 Section West					
Well No. 6667	Section Dakota		Section Dakota		Section Dakota

1. Outline the acreage dedicated to the subject well by colored pencil or hatchure marks on the plat below.
2. If more than one lease is dedicated to the well, outline each and identify the ownership thereof (both as to working interest and royalty).
3. If more than one lease of different ownership is dedicated to the well, have the interests of all owners been consolidated by communitization, unitization, force-pooling, etc?

☐ Yes ☐ No If answer is "yes" type of consolidation _____

If answer is "no," list the owners and tract descriptions which have actually been consolidated. (Reverse side of this form if necessary.) _____

No allowable will be assigned to the well until all interests have been consolidated (by communitization, unitization, forced-pooling, or otherwise) or until a non-standard unit, eliminating such interests, has been approved by the Commission.



CERTIFICATION

I hereby certify that the information contained herein is true and complete to the best of my knowledge and belief.

Name	
Position	
Company	
Date	

I hereby certify that the well location shown on this plat was plotted from field notes of actual surveys made by me or under my supervision, and that the same is true and correct to the best of my knowledge and belief.

June 26, 1969

Fred B. Kerr Jr.
Fred B. Kerr Jr.

3950