

UNITED STATES
DEPARTMENT OF THE INTERIOR
GEOLOGICAL SURVEY

30-045-20535

APPLICATION FOR PERMIT TO DRILL, DEEPEN, OR PLUG BACK

1a. TYPE OF WORK

DRILL ☒

DEEPEN ☐

PLUG BACK ☐

b. TYPE OF WELL

OIL
WELL ☐

GAS
WELL ☒

OTHER

SINGLE
ZONE ☐

MULTIPLE
ZONE ☐

2. NAME OF OPERATOR

Aztec Oil & Gas

3. ADDRESS OF OPERATOR

Drawer 570, Farmington, New Mexico

4. LOCATION OF WELL (Report location clearly and in accordance with any State requirements.*)

At surface

1520 FNL & 1570 FWL Sec. 24-31N-12W

At proposed prod. zone

14. DISTANCE IN MILES AND DIRECTION FROM NEAREST TOWN OR POST OFFICE*

15. DISTANCE FROM PROPOSED*

LOCATION TO NEAREST
PROPERTY OR LEASE LINE, FT.
(Also to nearest drlg. unit line, if any)

16. NO. OF ACRES IN LEASE

17. NO. OF ACRES ASSIGNED
TO THIS WELL

18. DISTANCE FROM PROPOSED LOCATION*
TO NEAREST WELL, DRILLING, COMPLETED,
OR APPLIED FOR, ON THIS LEASE, FT.

19. PROPOSED DEPTH

20. ROTARY OR CABLE TOOLS

21. ELEVATIONS (Show whether DF, RT, GR, etc.)

6118 gr.

22. APPROX. DATE WORK WILL START*

23.

PROPOSED CASING AND CEMENTING PROGRAM

SIZE OF HOLE	SIZE OF CASING	WEIGHT PER FOOT	SETTING DEPTH	QUANTITY OF CEMENT
<i>12 1/4"</i>	<i>8 5/8"</i>	<i>24#</i>	<i>115'</i>	<i>60 sx</i>
<i>6 3/4"</i>	<i>4 1/2"</i>	<i>9.5#</i>	<i>2600'</i>	<i>250 sx</i>

Propose to:

*Drill 12 1/4" hole to 115' set 8 5/8" surface pipe cmt w/60sx
Drill to TD 2600' a 6 3/4" hole, set 4 1/2" long string cmt w/250sx
Run Induction Electric log
Perforate Pictured Cliffs zone
Run 1" tbq.*

Proration unit: NW/4 Sec. 24-31N-12W-160 ac.

RECEIVED

JUL 23 1969

OIL CON. COM.
DIST. 3

RECEIVED

JUL 22 1969

U. S. GEOLOGICAL SURVEY
FARMINGTON, N. M.

IN ABOVE SPACE DESCRIBE PROPOSED PROGRAM: If proposal is to deepen or plug back, give data on present productive zone and proposed new productive zone. If proposal is to drill or deepen directionally, give pertinent data on subsurface locations and measured and true vertical depths. Give blowout preventer program, if any.

24.

SIGNED

John C. Johnson

TITLE *District Superintendent*

DATE *7-15-69*

(This space for Federal or State office use)

PERMIT NO.

APPROVAL DATE

APPROVED BY

2a

TITLE

DATE

CONDITIONS OF APPROVAL, IF ANY:



**NEW MEXICO OIL CONSERVATION COMMISSION
WELL LOCATION AND ACREAGE DEDICATION PLAT**

Form C-102
Supersedes C-128
Effective 1-1-65

All distances must be from the outer boundaries of the Section.

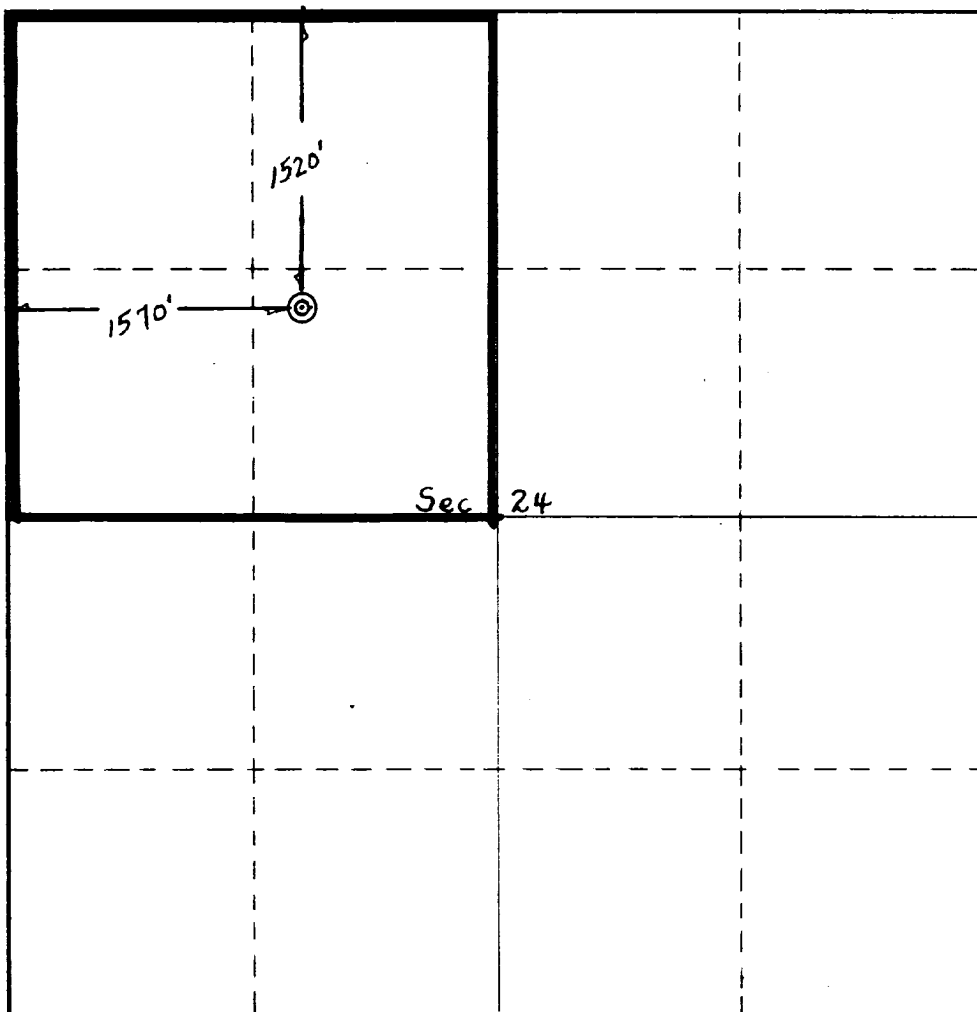
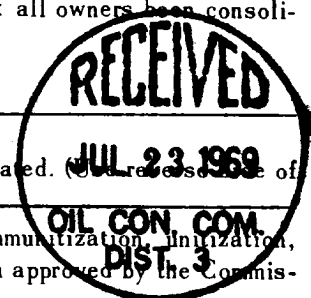
Operator Astec Oil & Gas Company			Lease East		Well No. 12
Unit Letter F	Section 24	Township 31N	Range 12W	County San Juan	
Actual Footage Location of Well: 1520 feet from the North line and 1570 feet from the West line					
Ground Level Elev. 6118	Producing Formation Pictured Cliffs	Pool Astec	Dedicated Acreage: 152 Acres		

1. Outline the acreage dedicated to the subject well by colored pencil or hachure marks on the plat below.
2. If more than one lease is dedicated to the well, outline each and identify the ownership thereof (both as to working interest and royalty).
3. If more than one lease of different ownership is dedicated to the well, have the interests of all owners been consolidated by communitization, unitization, force-pooling, etc?

☐ Yes ☐ No If answer is "yes," type of consolidation _____

If answer is "no," list the owners and tract descriptions which have actually been consolidated. (Use reverse side of this form if necessary.) _____

No allowable will be assigned to the well until all interests have been consolidated (by communitization, unitization, forced-pooling, or otherwise) or until a non-standard unit, eliminating such interests, has been approved by the Commission.



CERTIFICATION

I hereby certify that the information contained herein is true and complete to the best of my knowledge and belief.

Name **Joe C. Nelson**
 Position **District Superintendent**
 Company **Astec Oil and Gas**

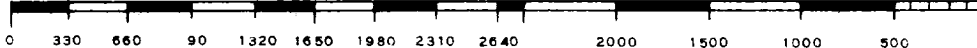
Date **7-21-69**

I hereby certify that the well location shown on this plat was plotted from field notes of actual surveys made by me or under my supervision, and that the same is true and correct to the best of my knowledge and belief.

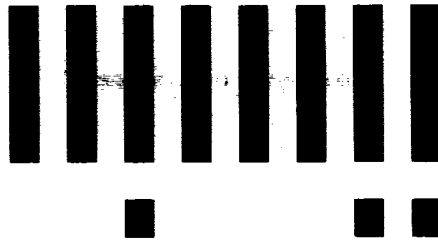
Date Surveyed **JUL 15 1969**
 Registered Professional Engineer and/or Land Surveyor

Fred B. Korte Jr.
Fred B. Korte Jr.

Certificate No. **3950**







LTR



Job separation sheet

