

UNITED STATES  
DEPARTMENT OF THE INTERIOR  
GEOLOGICAL SURVEY30-045-20536  
5. LEASE DESIGNATION AND SERIAL NO.  
NM-9037

## APPLICATION FOR PERMIT TO DRILL, DEEPEN, OR PLUG BACK

## 1a. TYPE OF WORK

DRILL ☒DEEPEN ☐PLUG BACK ☐

## b. TYPE OF WELL

OIL  
WELL ☐

GAS

WELL ☒ n OTHERSINGLE  
ZONE ☐MULTIPLE  
ZONE ☒

## 2. NAME OF OPERATOR

Aztec Oil and Gas Company

## 3. ADDRESS OF OPERATOR

Drawer 570, Farmington, New Mexico

## 4. LOCATION OF WELL (Report location clearly and in accordance with any State requirements.)\*

At surface

990 FNL &amp; 990 FEL, Sec. 12-32N-8W

At proposed prod. zone

## 12. DISTANCE IN MILES AND DIRECTION FROM NEAREST TOWN OR POST OFFICE\*

## 13. DISTANCE FROM NEAREST

LOCATION TO NEAREST  
PROPERTY OR LEASE LINE, FT.  
(Also to nearest C&G well line, if any.)

## 16. NO. OF ACRES IN LEASE

17. NO. OF ACRES ASSIGNED  
TO THIS WELL

322.34

18. DISTANCE FROM PROPOSED LOCATION\*  
TO NEAREST WELL, DRILLING, COMPLETED,  
OR APPLIED FOR, ON THIS LEASE, FT.

## 19. PROPOSED DEPTH

8716

## 20. ROTARY OR CABLE TOOLS

rotary

## 21. ELEVATIONS (Show whether DS, RT, GL, etc.)

7095 Gr

## 22. APPROX. DATE WORK WILL START\*

## 23. PROPOSED CASING AND CEMENTING PROGRAM

SIZE OF HOLE	SIZE OF CASING	WEIGHT PER FOOT	SETTING DEPTH	QUANTITY OF CEMENT
15"	10-3/4"	32.75#	300'	150 sx
9-7/8"	7-5/8"	26.40#	4160'	300 sx
6-3/4"	4-1/2"	10.5# & 11.6#	8716'	600 sx

## Propose to:

Drill 15" hole and set 10-3/4" surface casing at 300' cement with 150 sx  
Drill 9-7/8" hole and set 7-5/8" intermediate at 4160' cement with 300 sx  
Drill with gas a 6-3/4" hole to TD 8716' from 4160'', run 4-1/2" liner to TD  
cement with 600 sx  
Perforate and frac Mesaverde and Dakota zones.  
Run Baker Model D production packer  
Run 1-1/2" tubing.

Proration unit: E/2W/2, E/2 Sec. 12-32N-8W - 322.34 ac.

IN ABOVE SPACE DESCRIBE PROPOSED PROGRAM: If proposal is to deepen or plug back, give data on present productive zone and proposed new productive zone. If proposal is to drill or deepen directionally, give pertinent data on subsurface locations and measured and true vertical depths. Give blowout preventer program, if any.

24.

SIGNED

TITLE District Superintendent

DATE 7-21-69

(This space for Federal or State office use)

PERMIT NO.

APPROVAL DATE

APPROVED BY

CONDITIONS OF APPROVAL, IF ANY:

TITLE

DATE

Hold MV E-104 For NSU

\*See Instructions on Reverse Side

RECEIVED  
JUL 23 1969OIL CON. COM.  
DIST. 3

RECEIVED

JUL 22 1969

U. S. GEOLOGICAL SURVEY  
FARMINGTON, N. M.

**NEW MEXICO OIL CONSERVATION COMMISSION  
WELL LOCATION AND ACREAGE DEDICATION PLAT**

Form C-102  
Supersedes C-128  
Effective 1-1-65

All distances must be from the outer boundaries of the Section.

Operator <b>Aztec Oil &amp; Gas Company</b>			Lease <b>Reese Mesa</b>		Well No. <b>1</b>
Unit Letter <b>H</b>	Section <b>12</b>	Township <b>32N</b>	Range <b>8W</b>	County <b>San Juan</b>	
Actual Footage Location of Well: <b>990</b> feet from the <b>North</b> line and <b>990</b> feet from the <b>East</b> line					
Ground Level Elev. <b>7095</b>	Producing Formation <b>Dakota-Mesa Verde</b>		Pool <b>Blanco Mesa Verde-Basin Dakota</b>		Dedicated Acreage: <b>322.83</b> Acres

1. Outline the acreage dedicated to the subject well by colored pencil or hachure marks on the plat below.
2. If more than one lease is dedicated to the well, outline each and identify the ownership thereof (both as to working interest and royalty).
3. If more than one lease of different ownership is dedicated to the well, have the interests of all owners here consolidated by communitization, unitization, force-pooling, etc?

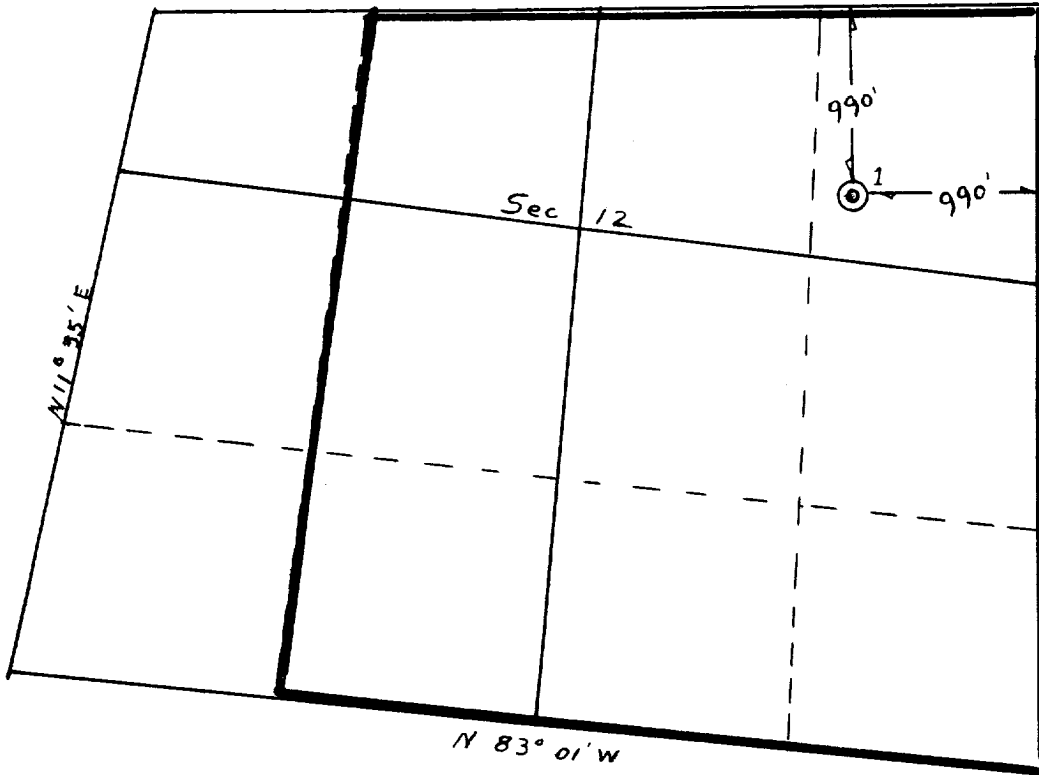
☐ Yes   ☐ No   If answer is "yes," type of consolidation \_\_\_\_\_

If answer is "no," list the owners and tract descriptions which have actually been consolidated. (Use reverse side of this form if necessary.) \_\_\_\_\_

No allowable will be assigned to the well until all interests have been consolidated (by communitization, unitization, forced-pooling, or otherwise) or until a non-standard unit, eliminating such interests, has been approved by the Commission.



*NSU for DAK by R2046*



Scale: 1"=1000'

<b>CERTIFICATION</b>	
I hereby certify that the information contained herein is true and complete to the best of my knowledge and belief.	
Name <i>Joe C. Adams</i>	<i>District Superintendent</i> <i>Aztec Oil &amp; Gas</i> <b>7-21-69</b>
Position	
Company	
Date	
I hereby certify that the well location shown on this plat was plotted from field notes of actual surveys made by me or under my supervision, and that the same is true and correct to the best of my knowledge and belief.	
Date Surveyed <b>July 14, 1969</b>	
Registered Professional Engineer and/or Land Surveyor <i>Fred R. Kerr Jr.</i>	
Certificate No. <b>3950</b>	