

NO. OF COPIES RECEIVED	5
DISTRIBUTION	
SANTA FE	1
FILE	1
U.S.G.S.	2
LAND OFFICE	
OPERATOR	1

NEW MEXICO OIL CONSERVATION COMMISSION

Form C-101  
Revised 1-1-65 30-645-20543

5A. Indicate Type of Lease  
STATE  FEE

5. State Oil & Gas Lease No.

APPLICATION FOR PERMIT TO DRILL, DEEPEN, OR PLUG BACK

1a. Type of Work  
b. Type of Well DRILL  DEEPEN  PLUG BACK   
OIL WELL  GAS WELL  OTHER  SINGLE ZONE  MULTIPLE ZONE

6. Name of Operator  
Aztec Oil and Gas Company

7. Unit Agreement Name

8. Farm or Lease Name  
Turner

9. Well No.  
2

10. Field and Pool, or Wildcat  
Pictured Cliffs

11. Location of Well  
UNIT LETTER N LOCATED 1070 FEET FROM THE South LINE  
AND 1460 FEET FROM THE West LINE OF SEC. 24 TWP. 31N RGE. 11W NMPM

12. County  
San Juan

13. Proposed Depth 2475 13A. Formation Pictured Cliffs 20. Rotary or C.M. rotary

14. Operations (Show whether DE, KI, etc.) 5721 Gr 21A. Kind & Status Plug, Bond 21B. Drilling Contractor 22. Approx. Date Work will start

PROPOSED CASING AND CEMENT PROGRAM

SIZE OF HOLE	SIZE OF CASING	WEIGHT PER FOOT	SETTING DEPTH	SACKS OF CEMENT	EST. TOP
12-1/4"	8-5/8"	24#	115'	60 sx	
6-3/4"	4-1/2"	9.3#	2475'	250 sx	

Propose to:

Drill 12-1/4" hole to 115' run 8-5/8" surface pipe cement with 60 sx  
Drill to TD 2475' a 6-3/4" hole, run 4-1/2" long string cement w/250 sx  
Run Induction Electric log  
Perforate and frac Pictured Cliffs zone  
Run 1" tubing

APPROVAL VALID  
FOR 90 DAYS UNLESS  
DRILLING COMMENCED,

EXPIRES October 30, 1969



Proratoin unit: SW/4 -- Sec. 24-31N-11W -- 160 ac.

IN ABOVE SPACE DESCRIBE PROPOSED PROGRAM; IF PROPOSAL IS TO DEEPEN OR PLUG BACK, GIVE DATA ON PRESENT PRODUCTIVE ZONE AND PROPOSED NEW PRODUCTIVE ZONE. GIVE BLOWOUT PREVENTER PROGRAM, IF ANY.

I hereby certify that the information above is true and complete to the best of my knowledge and belief.

Signed Joe C. Palumbo Title District Superintendent Date 7-31/69

(This space for State Use)

APPROVED BY Ernest C. Cavel TITLE Sup. R. T. III DATE 8-1-69

CONDITIONS OF APPROVAL, IF ANY:

NEW MEXICO OIL CONSERVATION COMMISSION  
WELL LOCATION AND ACREAGE DEDICATION PLAT

Form C-102  
Supersedes C-128  
Effective 1-1-65

All distances must be from the outer boundaries of the Section.

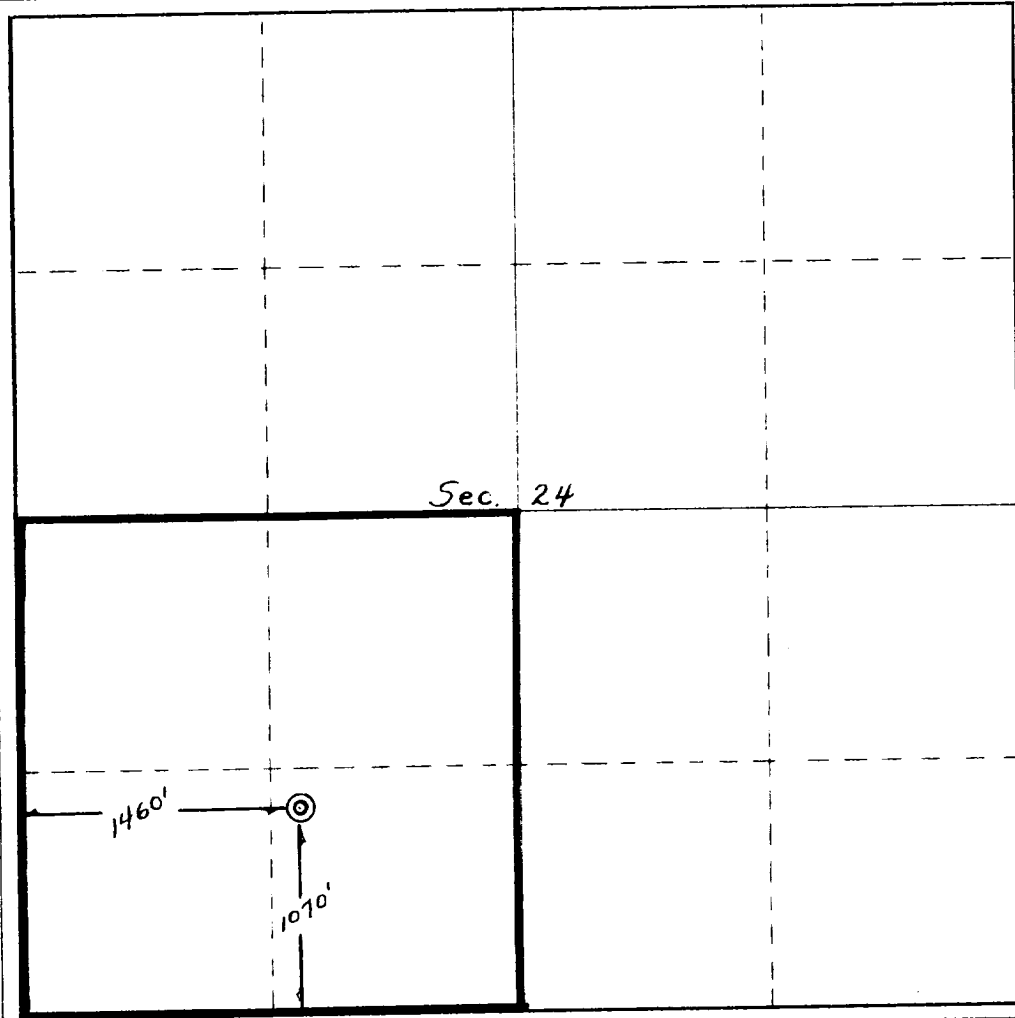
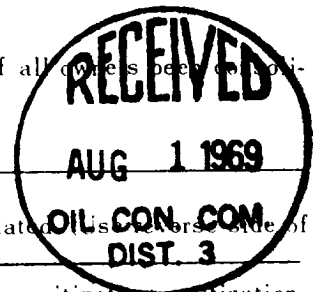
Operator <b>Aztec Oil &amp; Gas Company</b>		Lease <b>Turner</b>		Well No. <b>2</b>
Unit Letter <b>N</b>	Section <b>24</b>	Township <b>31N</b>	Range <b>11W</b>	County <b>San Juan</b>
Actual Well Location of Well: <b>1070</b> feet from the <b>South</b> line and <b>1460</b> feet from the <b>West</b> line				
Ground Level Elev. <b>5721</b>	Producing Formation <b>Pictured Cliffs</b>	Pool <b>Pictured Cliffs</b>	Dedicated Acreage <b>160</b> Acres	

- Outline the acreage dedicated to the subject well by colored pencil or hachure marks on the plat below.
- If more than one lease is dedicated to the well, outline each and identify the ownership thereof (both as to working interest and royalty).
- If more than one lease of different ownership is dedicated to the well, have the interests of all leases been consolidated by communitization, unitization, force-pooling, etc?

Yes  No If answer is "yes," type of consolidation \_\_\_\_\_

If answer is "no," list the owners and tract descriptions which have actually been consolidated (list owners side of this form if necessary.) \_\_\_\_\_

No allowable will be assigned to the well until all interests have been consolidated (by communitization, unitization, forced-pooling, or otherwise) or until a non-standard unit, eliminating such interests, has been approved by the Commission.



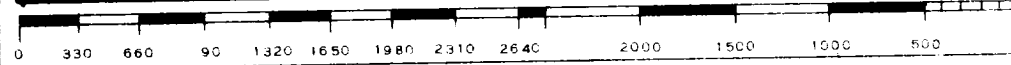
CERTIFICATION

I hereby certify that the information contained herein is true and complete to the best of my knowledge and belief.

Name: **Joe C. Salmon**  
 Position: **District Superintendent**  
 Company: **Aztec Oil and Gas**  
 Date: **July 31, 1969**

I hereby certify that the well location shown on this plat was plotted from field notes of actual surveys made by me or under my supervision, and that the same is true and correct to the best of my knowledge and belief.

Date: **July 25, 1969**  
 Signature: **Fred B. Kern Jr.**  
 Title: **Fred B. Kern Jr.**



3950