

NEW MEXICO
WELL LOCATION AND ACREAGE DEDICATION PLAT

Effective 1-1-65

All distances must be from the outer boundaries of the Section.

Operator AMOCO PRODUCTION COMPANY		Lease Holmberg Gas Com "A"		Well No. 1
Unit Letter D	Section 28	Township 32-N	Range 10-W	County San Juan
Actual Point of Location of Well: 1070 feet from the North line and 1470 feet from the East line				
Ground Level Elev. 3041'	Producing Formation Fruitland	Pool Undesignated Fruitland	Dedicated Acreage: 159.51 Acres	

- Outline the acreage dedicated to the subject well by colored pencil or hachure marks on the plat below.
- If more than one lease is dedicated to the well, outline each and identify the ownership thereof (both as to working interest and royalty).
- If more than one lease of different ownership is dedicated to the well, have the interests of all owners been consolidated by communitization, unitization, force-pooling, etc?

☒ Yes ☐ No If answer is "yes," type of consolidation Communitization

If answer is "no," list the owners and tract descriptions which have actually been consolidated. (Use DIST. 3 of this form if necessary.) _____

No allowable will be assigned to the well until all interests have been consolidated (by communitization, unitization, forced-pooling, or otherwise) or until a non-standard unit, eliminating such interests, has been approved by the Commission.

CERTIFICATION

I hereby certify that the information contained herein is true and complete to the best of my knowledge and belief.

Original Signed by
J. ARNOLD SNELL

Name **J. Arnold Snell**
Position **Area Engineer**
Company **AMOCO PRODUCTION COMPANY**
Date **February 1, 1973**

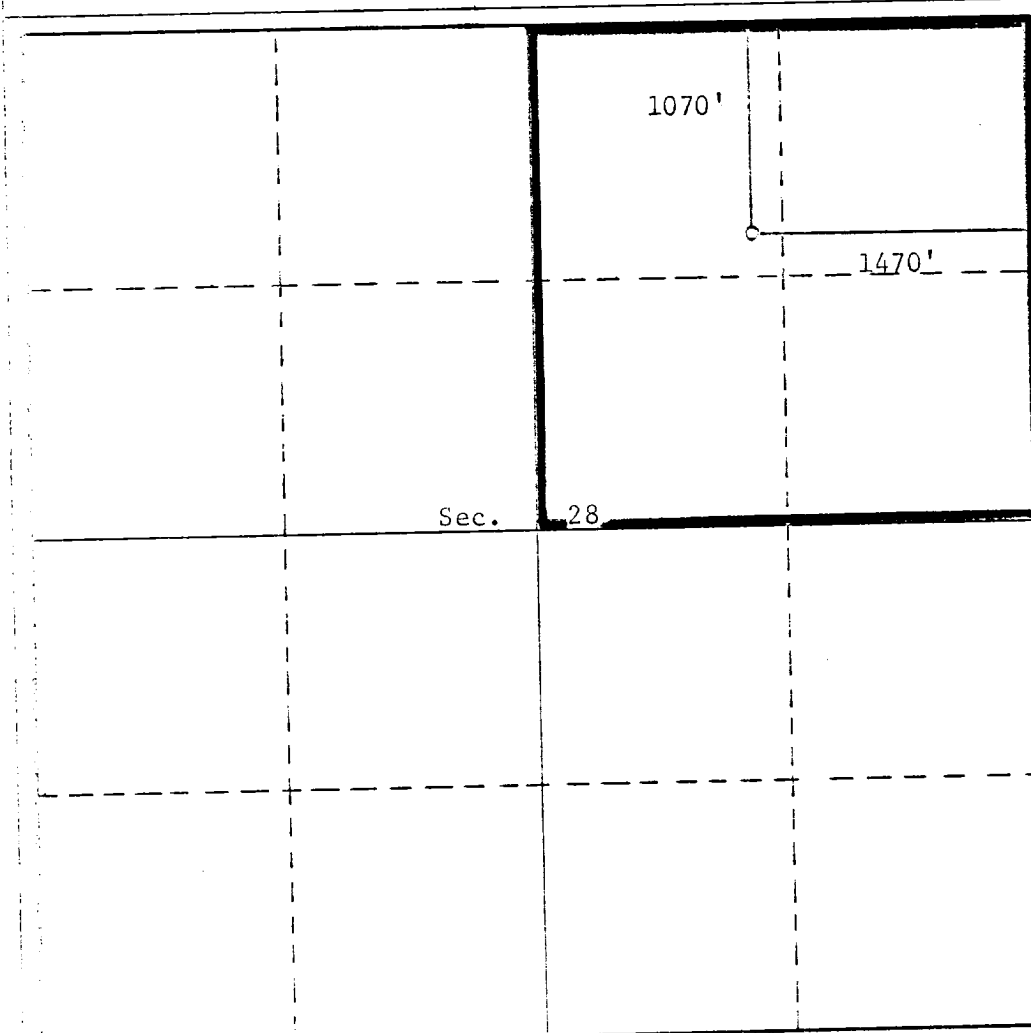
I hereby certify that the well location shown on this plat was plotted from field notes of actual surveys made by me or under my supervision, and that the same is true and correct to the best of my knowledge and belief.

Date Surveyed **September 7, 1972**
Registered Professional Engineer and/or Land Surveyor

Original Signed By
Fred B. Kerr, Jr.

Certificate No.

3950



0 500 1000 1500 2000 2500 3000 3500 4000