

UNITED STATES
DEPARTMENT OF THE INTERIOR
GEOLOGICAL SURVEY

APPLICATION FOR PERMIT TO DRILL, DEEPEN, OR PLUG BACK

1a. TYPE OF WORK

DRILL ☒DEEPEN ☐PLUG BACK ☐

b. TYPE OF WELL

OIL
WELL ☐GAS
WELL ☒

OTHER

SINGLE
ZONE ☒MULTIPLE
ZONE ☐

2. NAME OF OPERATOR

Aztec Oil & Gas Company

3. ADDRESS OF OPERATOR

P. O. Drawer 570, Farmington, New Mexico

4. LOCATION OF WELL (Report location clearly and in accordance with any State requirements.)*

At surface

2540' FSL & 350' FWL Section 12-32N-8W

At proposed ~~Sec.~~ zone

14. DISTANCE IN MILES AND DIRECTION FROM NEAREST TOWN OR POST OFFICE*

15. DISTANCE FROM PROPOSED*

LOCATION TO NEAREST
PROPERTY OR LEASE LINE, FT.
(Also to nearest drlg. unit line, if any)18. DISTANCE FROM PROPOSED LOCATION*
TO NEAREST WELL, DRILLING, COMPLETED,
OR APPLIED FOR, ON THIS LEASE, FT.

21. ELEVATIONS (Show whether DF, RT, GR, etc.)

7063' GR

16. NO. OF ACRES IN LEASE

328.17

19. PROPOSED DEPTH

8700'

17. NO. OF ACRES ASSIGNED
TO THIS WELL

328.17 299.89

20. ROTARY OR CABLE TOOL

Rotary

22. APPROX. DATE WORK WILL START*

45 days

CHANGE

K A E.

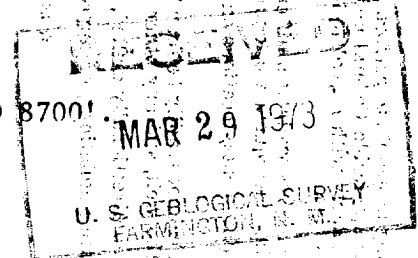
23.

PROPOSED CASING AND CEMENTING PROGRAM

SIZE OF HOLE	SIZE OF CASING	WEIGHT PER FOOT	SETTING DEPTH	QUANTITY OF CEMENT
12-3/4	9-5/8"	32.30#	300'	300 sx
8-3/4	7"	20# & 23#	6400'	250 sx
6-1/4	4-1/2"	10.50	6300 - 8700'	500 sx
	2-3/8"	4.70#	8600'	

PROPOSE TO:

Drill thru Dakota formation to approximately TD 8700'.
Perforate and sand/water frac Dakota formation.
Run tubing.



Dedicated acres 328.17, W/2 W/2 Section 12-32N-8W & E/2 Section 11, 32N-8W
IN ABOVE SPACE DESCRIBE PROPOSED PROGRAM: If proposal is to deepen or plug back, give data on present productive zone and proposed new productive zone. If proposal is to drill or deepen directionally, give pertinent data on subsurface locations and measured and true vertical depths. Give blowout preventer program, if any.

24.

SIGNED

Jac C. Johnson

TITLE

District Superintendent

DATE

March 21, 1973

(This space for Federal or State office use)

PERMIT NO.

APPROVAL DATE

APPROVED BY

TITLE

DATE

CONDITIONS OF APPROVAL, IF ANY:

**NEW MEXICO OIL CONSERVATION COMMISSION
WELL LOCATION AND ACREAGE DEDICATION PLAT**

Form C-102
Supersedes C-128
Effective 1-1-65

All distances must be from the outer boundaries of the Section.

Operator Aztec Oil & Gas Company			Lease Reese Mesa		Well No. #2
Unit Letter L	Section 12	Township 32N	Range 8W	County San Juan	
Actual Footage Location of Well: 2540 feet from the South line and 350 feet from the West line					
Ground Level Elev: 7063	Producing Formation Dakota		Pool Basin		Dedicated Acreage: 299.89 Acres

1. Outline the acreage dedicated to the subject well by colored pencil or hachure marks on the plat below.
2. If more than one lease is dedicated to the well, outline each and identify the ownership thereof (both as to working interest and royalty).
3. If more than one lease of different ownership is dedicated to the well, have the interests of all owners been consolidated by communitization, unitization, force-pooling, etc?

☐ Yes ☐ No If answer is "yes," type of consolidation _____

If answer is "no," list the owners and tract descriptions which have actually been consolidated (on reverse side of this form if necessary.) _____

No allowable will be assigned to the well until all interests have been consolidated (by communitization, unitization, forced-pooling, or otherwise) or until a non-standard unit, eliminating such interests, has been approved by the Commission.

CERTIFICATION

I hereby certify that the information contained herein is true and complete to the best of my knowledge and belief.

ORIGINAL SIGNED BY JOE C. SALMON

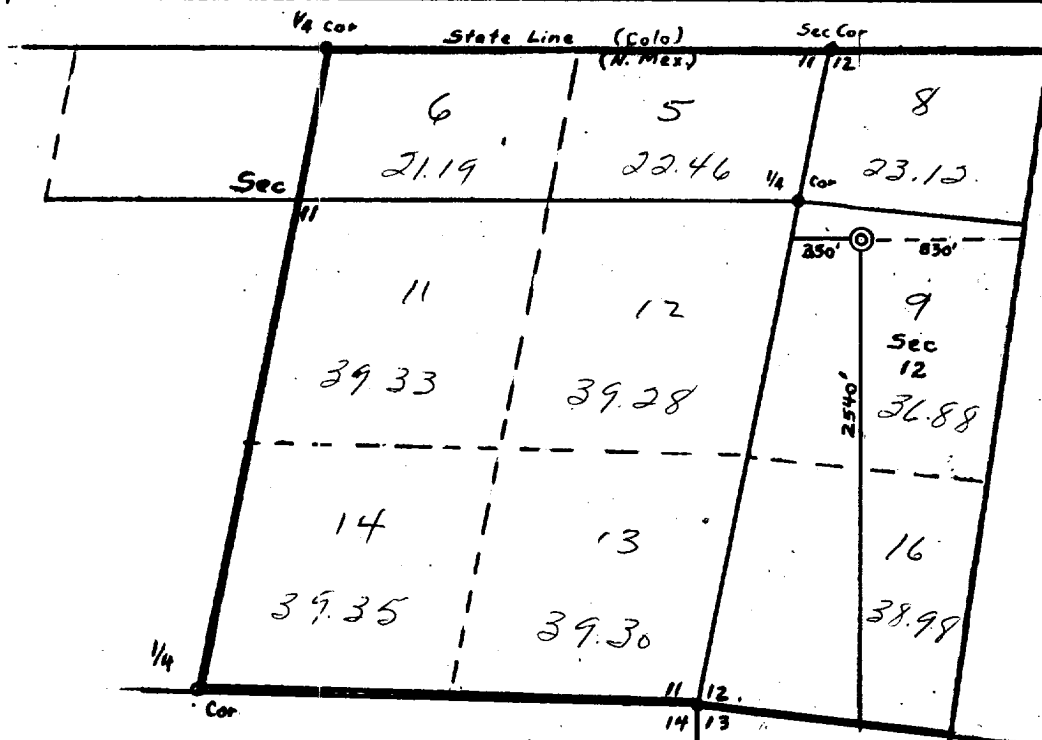
Name
Joe C. Salmon
Position
District Superintendent
Company
Aztec Oil & Gas Company
Date
April 2, 1973

I hereby certify that the well location shown on this plat was plotted from field notes of actual surveys made by me or under my supervision, and that the same is true and correct to the best of my knowledge and belief.

Date Surveyed
March 12, 1973

Registered Professional Geologist
and/or Land Surveyor

Fred B. Kerr Jr.
Certificate No. **3950**



Scale: 1"=1000'

TRACT 6
R-3817 Aug 14, 1961

RECEIVED

APR 3 1973

U. S. GEOLOGICAL SURVEY
FARMINGTON, N. M.