

AZTEC OIL & GAS COMPANY

P.O. DRAWER 570
FARMINGTON, NEW MEXICO 87401

May 3, 1973

United States Geological Survey
P. O. Box 959
Farmington, New Mexico

Attention: Mr. P. T. McGrath

Dear Sir:


Enclosed please find map showing existing roads and planned access roads to Aztec Oil & Gas Company's Richardson #12 well. The locations of tank batteries and flow lines will be on location with well.

There will be no camps or air strips.

Also enclosed is location layout showing approximate location of rig, pits and pipe rights.

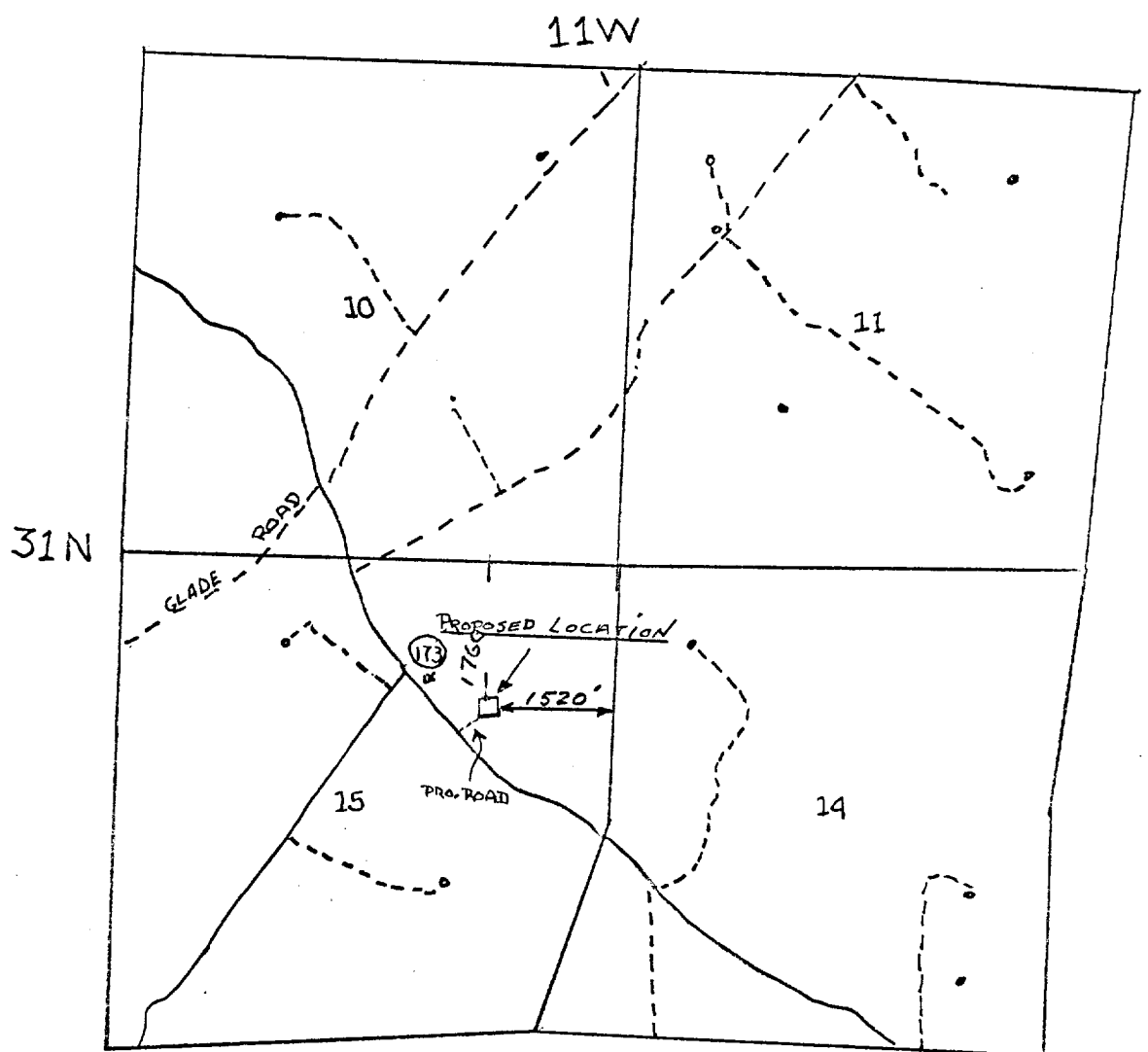
Water supply will be the Animas river.

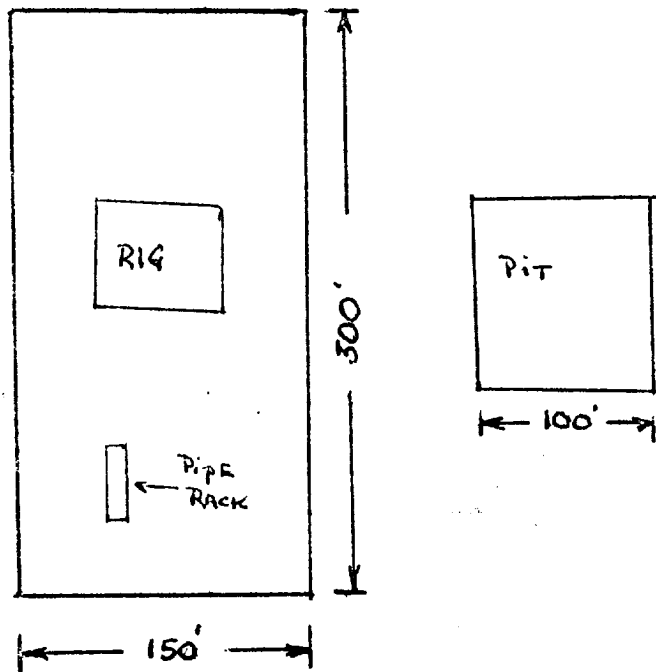
In the event of a dry hole, location will be graded and reseeded according to Bureau of Land Management standards.


Joe C. Salmon
District Superintendent

JCS/dg

U.S. GEOLOGICAL SURVEY
BULLETIN 1227
1967





LOCATION LAYOUT