

UNITED STATES DEPARTMENT OF THE INTERIOR GEOLOGICAL SURVEY

30-045-21301

APPLICATION FOR PERMIT TO DRILL, DEEPEN, OR PLUG BACK

1a. TYPE OF WORK DRILL [X] DEEPEN [ ] PLUG BACK [ ]

b. TYPE OF WELL OIL WELL [ ] GAS WELL [X] OTHER [ ] SINGLE ZONE [ ] MULTIPLE ZONE [X]

2. NAME OF OPERATOR Aztec Oil & Gas Company

3. ADDRESS OF OPERATOR P. O. Drawer 570, Farmington, New Mexico

4. LOCATION OF WELL (Report location clearly and in accordance with any State requirements) At surface 2500' FSL & 1820' FWL At proposed prod. zone

14. DISTANCE IN MILES AND DIRECTION FROM NEAREST TOWN OR POST OFFICE\*

16. DISTANCE FROM PROPOSED\* LOCATION TO NEAREST PROPERTY OR LEASE LINE, FT. (Also to nearest drilg. unit line, if any)

16. NO. OF ACRES ASSIGNED TO THIS WELL 292.65 OIL COM. COM. DIST. 3

17. NO. OF ACRES ASSIGNED TO THIS WELL 293.65 292.65

18. DISTANCE FROM PROPOSED LOCATION\* TO NEAREST WELL, DRILLING, COMPLETED, OR APPLIED FOR, ON THIS LEASE, FT.

19. PROPOSED DEPTH 8720'

20. ROTARY OR CABLE TOOLS Rotary

21. ELEVATIONS (Show whether DF, RT, GR, etc.) 7048' GR

22. APPROX. DATE WORK WILL START\* 45 days

23. PROPOSED CASING AND CEMENTING PROGRAM

Table with 5 columns: SIZE OF HOLE, SIZE OF CASING, WEIGHT PER FOOT, SETTING DEPTH, QUANTITY OF CEMENT. Rows include 12-3/4" hole with 9-5/8" casing, 8-3/4" hole with 7" casing, and 6-1/4" hole with 4-1/2" casing.

RECEIVED JUN 25 1973

PROPOSE TO:

Set 300' of 9-5/8" casing, cement to surface. Drill to approximately TD of 6560. Run 7" casing, cement with 400 sxs. Drill with gas to TD of 8720'. Run 4-1/2" liner, cement with 200 sxs. Perforate and frac Dakota formation. Perforate and frac Mesaverde formation. Set Baker Model D packer above Dakota. Run 2" tubing to Dakota. Run 1-1/2" tubing to Mesaverde. Install well head.

Dedicated acres: W 1/2 of Section 11, E 1/2 E 1/2 of Section 10, 293.65 292.65 acres.

IN ABOVE SPACE DESCRIBE PROPOSED PROGRAM: If proposal is to deepen or plug back, give data on present productive zone and proposed new productive zone. If proposal is to drill or deepen directionally, give pertinent data on subsurface locations and measured and true vertical depths. Give blowout preventer program, if any.

24. SIGNED [Signature] TITLE District Superintendent DATE 6-21-73

(This space for Federal or State office use)

PERMIT NO. APPROVAL DATE

APPROVED BY TITLE DATE CONDITIONS OF APPROVAL, IF ANY:

NEW MEXICO OIL CONSERVATION COMMISSION  
WELL LOCATION AND ACREAGE DEDICATION PLAT

Form C-102  
Supersedes C-128  
Effective 1-1-65

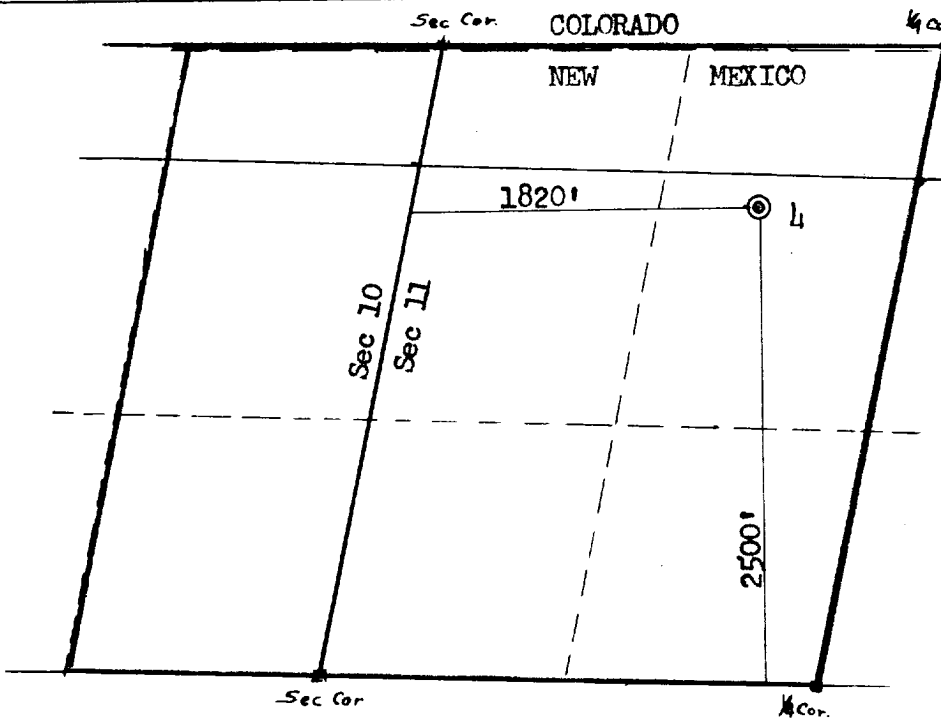
All distances must be from the outer boundaries of the Section.

Operator <b>Aztec Oil &amp; Gas Company</b>			Lease <b>Reese Mesa</b>		Well No. <b>4</b>
Unit Letter <b>K (lot 11)</b>	Section <b>11</b>	Township <b>32N</b>	Range <b>8W</b>	County <b>San Juan</b>	
Actual Footage Location of Well: <b>2500</b> feet from the <b>South</b> line and <b>1820</b> feet from the <b>West</b> line					
Ground Level Elev: <b>7048</b>	Producing Formation <b>Dakota</b>	Pool <b>Basin</b>		Dedicated Acreage: <b>293.65</b> Acres	

- Outline the acreage dedicated to the subject well by colored pencil or hachure marks on the plat below.
- If more than one lease is dedicated to the well, outline each and identify the ownership thereof (both as to working interest and royalty).
- If more than one lease of different ownership is dedicated to the well, have the interests of all owners been consolidated by communitization, unitization, force-pooling, etc?

Yes  No If answer is "yes," type of consolidation \_\_\_\_\_  
If answer is "no," list the owners and tract descriptions which have actually been consolidated. (Use reverse side of this form if necessary.) \_\_\_\_\_

No allowable will be assigned to the well until all interests have been consolidated (by communitization, unitization, forced-pooling, or otherwise) or until a non-standard unit, eliminating such interests, has been approved by the Commission.



**CERTIFICATION**

I hereby certify that the information contained herein is true and complete to the best of my knowledge and belief.

**ORIGINAL SIGNED BY JOE C. SALMON**

Name  
Joe C. Salmon

Position  
District Superintendent

Company  
Aztec Oil & Gas Company

Date  
June 21, 1973

I hereby certify that the well location shown on this plat was plotted from field notes of actual surveys made by me or under my supervision, and that the same is true and correct to the best of my knowledge and belief.

**Acreage Dedication:**

Lots 5-12-13 Sec 10  
Lots 7-8-9-10-15-16 Sec 11

Regulation R-3817

Date Surveyed  
June 21, 1973

Registered Professional Engineer and/or Land Surveyor  
*Joe C. Salmon*

Certificate No.  
3950