

UNITED STATES
DEPARTMENT OF THE INTERIOR
GEOLOGICAL SURVEY

30.045-21485

APPLICATION FOR PERMIT TO DRILL, DEEPEN, OR PLUG BACK

1a. TYPE OF WORK

DRILL ☒DEEPEN ☐PLUG BACK ☐

b. TYPE OF WELL

OIL
WELL ☐GAS
WELL ☒

OTHER

SINGLE
ZONE ☒MULTIPLE
ZONE ☐

2. NAME OF OPERATOR

Northwest Pipeline Corporation

3. ADDRESS OF OPERATOR

501 Airport Drive, Room 126 Farmington, N.M. 87401

4. LOCATION OF WELL (Report location clearly and in accordance with any State requirements.)*

At surface

1660' FNL & 1850' FEL

At proposed prod. zone

1660' FNL & 1850' FEL

14. DISTANCE IN MILES AND DIRECTION FROM NEAREST TOWN OR POST OFFICE*

8 Miles West of Cedar Hill, New Mexico

15. DISTANCE FROM PROPOSED*

LOCATION TO NEAREST
PROPERTY OR LEASE LINE, FT.
(Also to nearest drlg. unit line, if any)

16. NO. OF ACRES IN LEASE

18. DISTANCE FROM PROPOSED LOCATION*
TO NEAREST WELL, DRILLING, COMPLETED,
OR APPLIED FOR, ON THIS LEASE, FT.

19. PROPOSED DEPTH

3400

17. NO. OF ACRES ASSIGNED
TO THIS WELL

160.00

20. ROTARY OR CABLE TOOLS

Rotary

21. ELEVATIONS (Show whether DF, RT, GR, etc.)

6596 G.L.

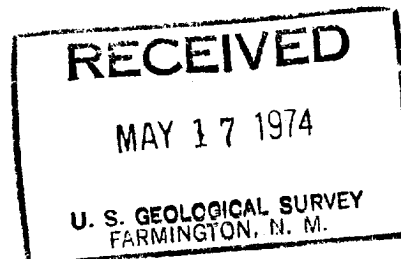
22. APPROX. DATE WORK WILL START*

July 1, 1974

23. PROPOSED CASING AND CEMENTING PROGRAM

SIZE OF HOLE	SIZE OF CASING	WEIGHT PER FOOT	SETTING DEPTH	QUANTITY OF CEMENT
12-1/4	8-5/8	24.0	100	Circulate
6-3/4	2-7/8	6.4	3400	200 Cubic Feet.

Selectively Perforate and sand-water frac the Pictured Cliffs formation.



The NE/4 of Sec 19 is dedicated to this well.

IN ABOVE SPACE DESCRIBE PROPOSED PROGRAM: If proposal is to deepen or plug back, give data on present productive zone and proposed new productive zone. If proposal is to drill or deepen directionally, give pertinent data on subsurface locations and measured and true vertical depths. Give blowout preventer program, if any.

24.

SIGNED

TITLE Drilling & Production Eng. DATE May 16, 1974

(This space for Federal or State office use)

PERMIT NO.

APPROVAL DATE

APPROVED BY

TITLE

DATE

CONDITIONS OF APPROVAL, IF ANY:

*See Instructions On Reverse Side

**NEW MEXICO OIL CONSERVATION COMMISSION
WELL LOCATION AND ACREAGE DEDICATION PLAT**

Form C-102
Supersedes C-128
Effective 1-1-65

All distances must be from the outer boundaries of the Section.

Operator Northwest Pipeline Corporation			Lease Holt		Well No. 1
Unit Letter G	Section 19	Township 32N	Range 11W	County San Juan	
Actual Footage Location of Well: 1660 feet from the North line and 1850 feet from the East line					
Ground Level Elev. 6596	Producing Formation Pictured Cliffs		Pool Blanco Undesignated Pictured Cliffs	Dedicated Acreage: 160 Acres	

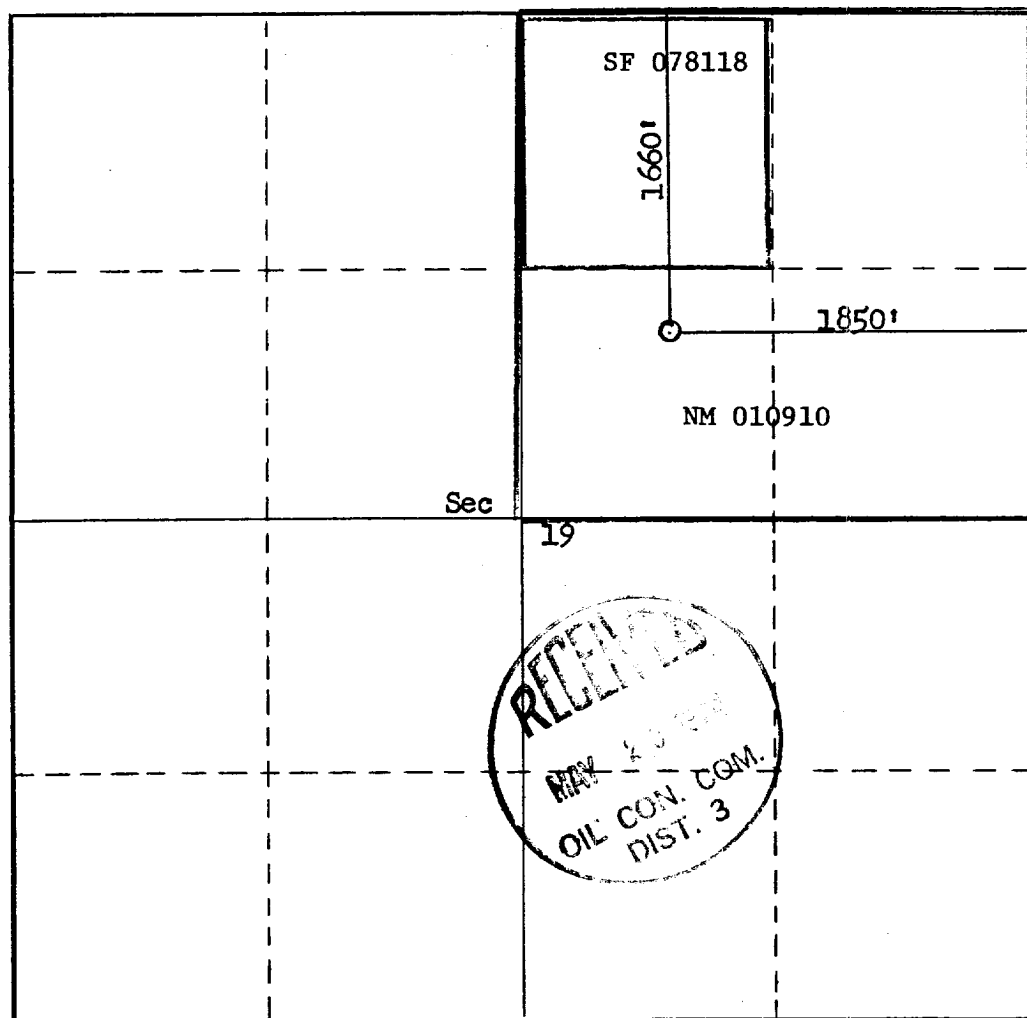
1. Outline the acreage dedicated to the subject well by colored pencil or hachure marks on the plat below.
2. If more than one lease is dedicated to the well, outline each and identify the ownership thereof (both as to working interest and royalty).
3. If more than one lease of different ownership is dedicated to the well, have the interests of all owners been consolidated by communitization, unitization, force-pooling, etc?

☐ Yes ☒ No If answer is "yes," type of consolidation _____

If answer is "no," list the owners and tract descriptions which have actually been consolidated. (Use reverse side of this form if necessary.) Two Federal Leases: NW/4 NE/4 NE/4 SF 078118; other 3 1/4 - 1/4

NM010901

No allowable will be assigned to the well until all interests have been consolidated (by communitization, unitization, forced-pooling, or otherwise) or until a non-standard unit, eliminating such interests, has been approved by the Commission.



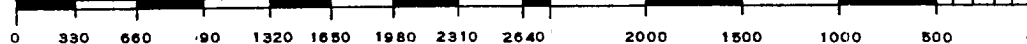
CERTIFICATION

I hereby certify that the information contained herein is true and complete to the best of my knowledge and belief.

Name
Joe Whitcomb
Position
Drilling & Production Eng.
Company
Northwest Pipeline Corp.
Date
May 16, 1974

I hereby certify that the well location shown on this plat was plotted from field notes of actual surveys made by me or under my supervision, and that the same is true and correct to the best of my knowledge and belief.

Date Surveyed
May 8, 1974
Registered Professional Engineer and/or Land Surveyor
Fred B. Kerk
Certificate No.
3950



CEDAR HILL 12 MI

763 2°30'

SOUTHERN UTE INDIAN RESERVATION

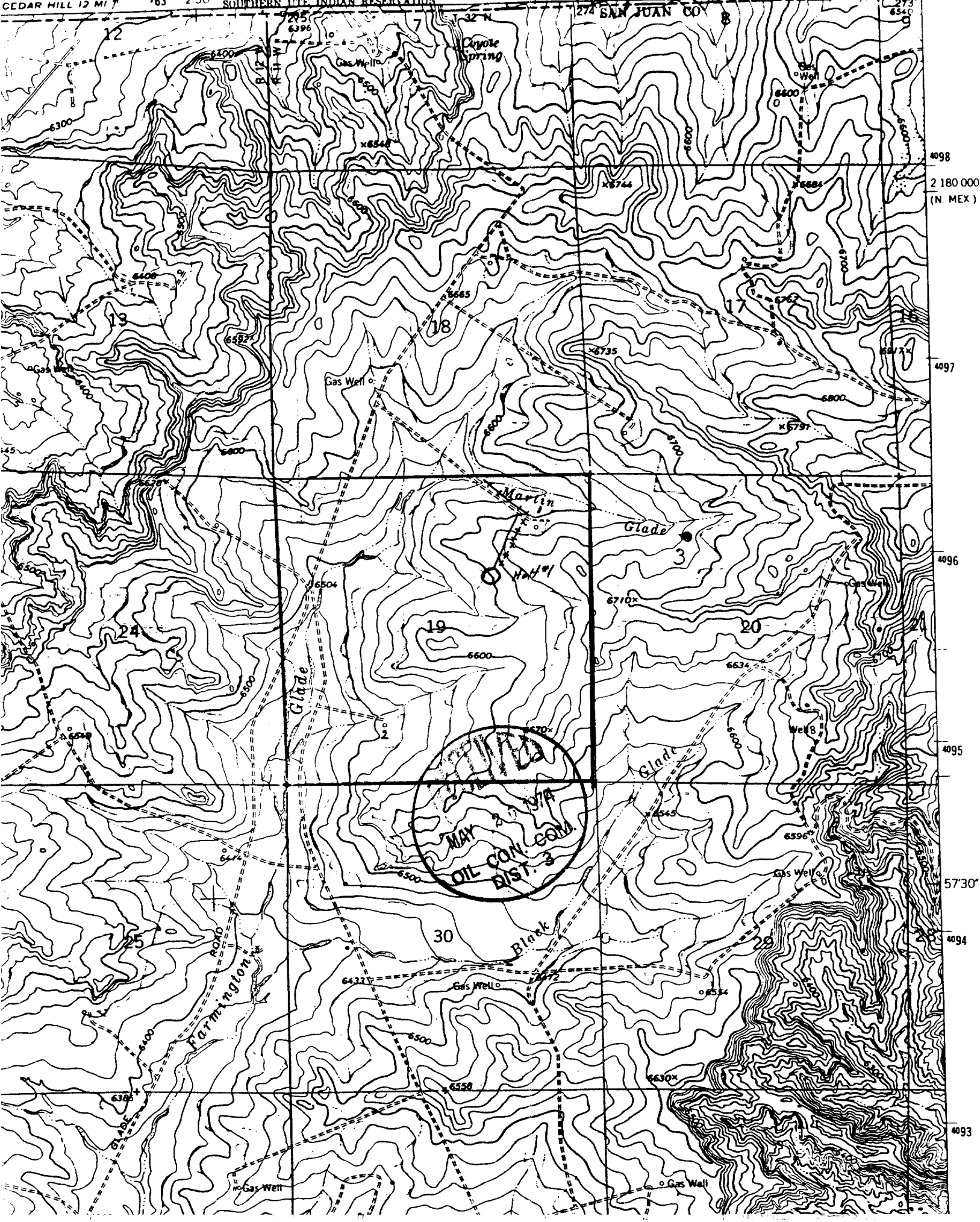
T. 32 N

765

LA PLATA CO

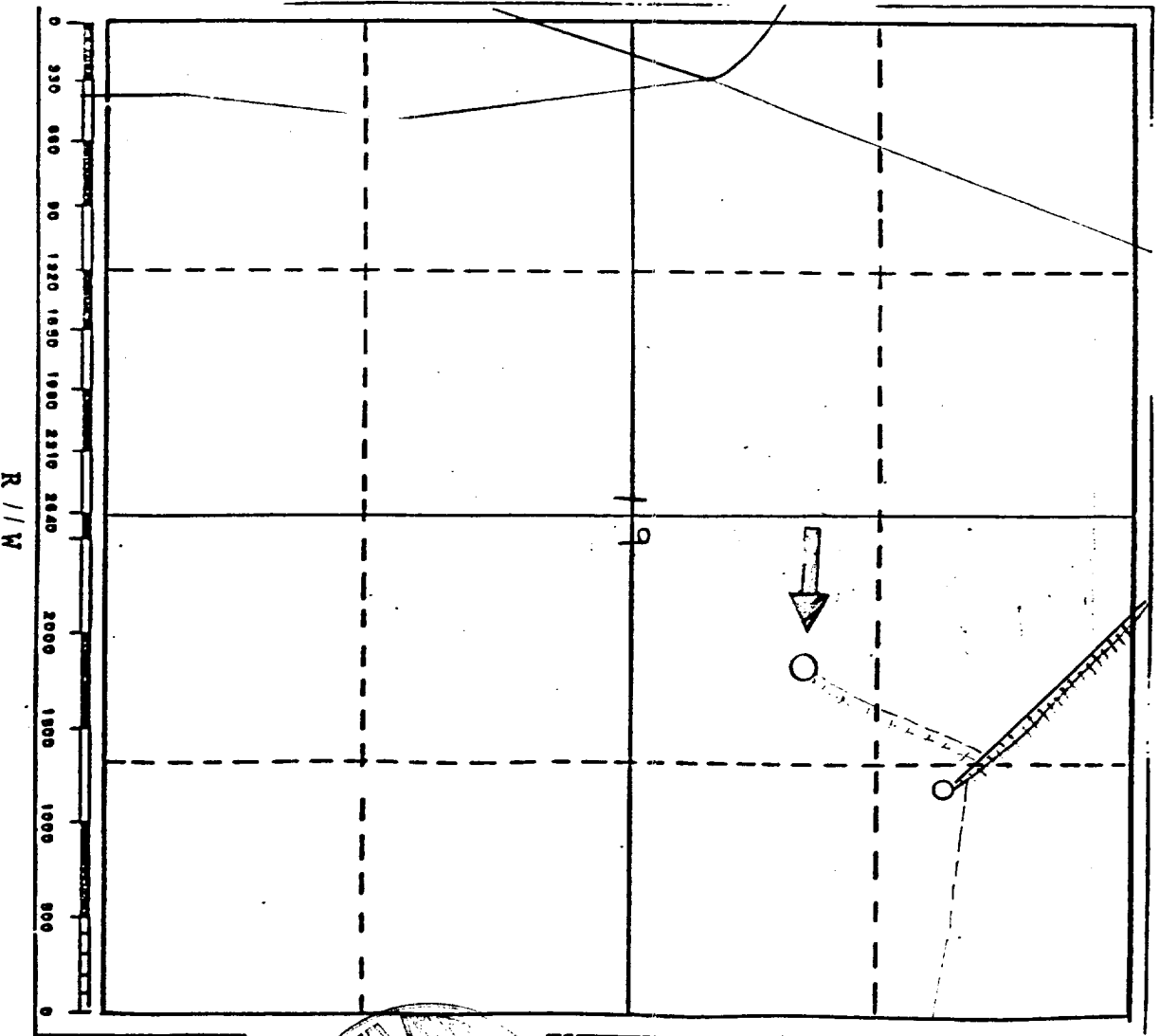
450,000 FEET (N. MEX.)

274 SAN JUAN CO



EXISTING AND PROPOSED ROADS AND RIGHTS OF WAY

Holt #1



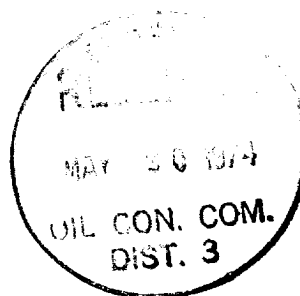
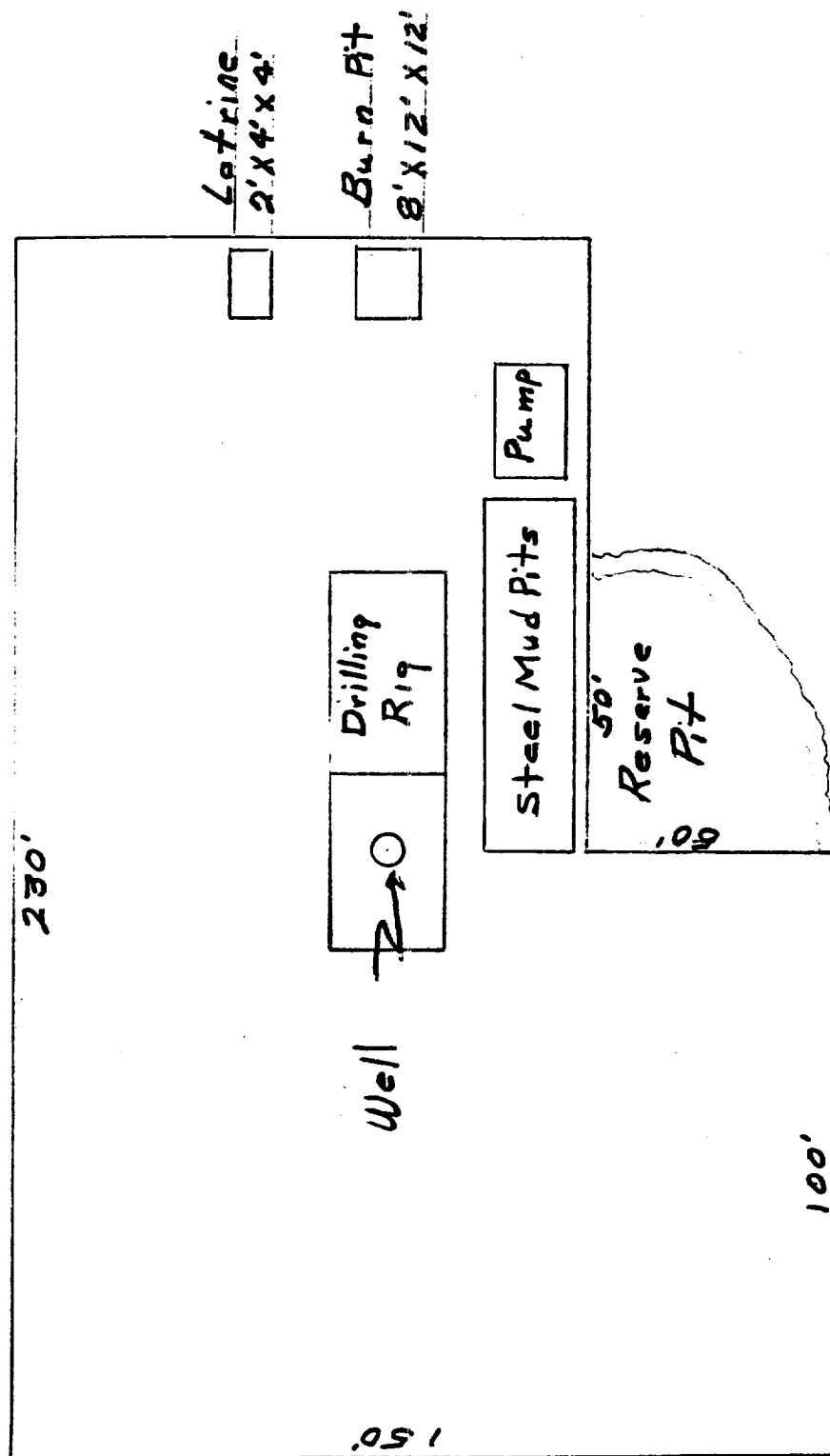
RECEIVED
OIL CON. COM.
DIST. 3

T
32
N

Existing Roads
Proposed Roads
Existing Pipeline
Proposed Pipeline

LOCATION AND EQUIPMENT LAYOUT

Holt No. 1

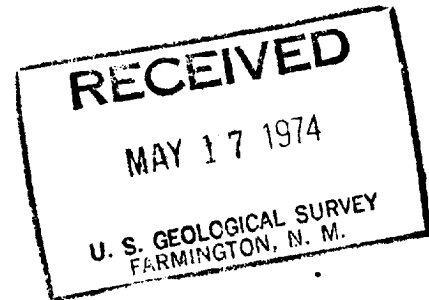


Northwest Pipeline Corporation



501 AIRPORT DRIVE
FARMINGTON, NEW MEXICO 87401

May 16, 1974



United States Geological Survey
P.O. Box 959
Farmington, New Mexico 87401

Re: Application for Permit to Drill
Holt No. 1
NE/4 Sec 19, T32N, R11W
Pictured Cliffs

Gentlemen:

Information regarding existing roads, pipeline, flow line, etc. relative to the above well location are included on the enclosed attachments.

Water for drilling and completion operations will be obtained from a nearby water hole. Waste disposal will be buried in the burn pit, latrine or reserve pit. There will be no camp or air strip associated with drilling this well. Upon completion or abandonment of this well the location will be cleaned, leveled and a dry hole marker placed, if applicable.

Yours truly,
Northwest Pipeline Corporation


O.B. Whitenburg
Drilling & Production Engineer.

OBW/js

Attachments

