

UNITED STATES  
DEPARTMENT OF THE INTERIOR  
GEOLOGICAL SURVEY

SUNDRY NOTICES AND REPORTS ON WELLS

(Do not use this form for proposals to drill or to deepen or plug back to a different reservoir. Use Form 9-331-C for such proposals.)

1. oil ☒ gas ☐ other ☐  
well well

2. NAME OF OPERATOR ARCO Oil and Gas Co., Div  
of Atlantic Richfield Company

3. ADDRESS OF OPERATOR  
P. O. Box 5540, Denver, Colo. 80217

4. LOCATION OF WELL (REPORT LOCATION CLEARLY. See space 17  
below.) Unit G-05  
AT SURFACE: 2606' FNL & 2580' FEL, Sec. 32  
AT TOP PROD. INTERVAL: Appx. same  
AT TOTAL DEPTH: Appx. same

16. CHECK APPROPRIATE BOX TO INDICATE NATURE OF NOTICE,  
REPORT, OR OTHER DATA

REQUEST FOR APPROVAL TO:

TEST WATER SHUT-OFF ☐  
FRACTURE TREAT ☐  
SHOOT OR ACIDIZE ☐  
REPAIR WELL ☐  
PULL OR ALTER CASING ☐  
MULTIPLE COMPLETE ☐  
CHANGE ZONES ☐  
ABANDON\* ☐

SUBSEQUENT REPORT OF:

☐  
☐  
☐  
☐  
☐  
☐  
☐  
☐

RECEIVED

JUN 15 1982

(NOTE: Report results of multiple completion or zone  
change on Form 9-330.)

U.S. GEOLOGICAL SURVEY

(other) Addn'l. Compl. of Upper Gallup and Stimulation of Present Lower Gallup  
Perfs.

17. DESCRIBE PROPOSED OR COMPLETED OPERATIONS (Clearly state all pertinent details, and give pertinent dates,  
including estimated date of starting any proposed work. If well is directionally drilled, give subsurface locations and  
measured and true vertical depths for all markers and zones pertinent to this work.)\*

Well #285 was completed in October, 1974 as a development well and  
initially tested 44 BOPD and 291 BWPD from the Lower Gallup formation.  
Production has declined to 10 BOPD and 225 BWPD presently. This well  
is located in a part of the field where scale problems are common.  
Stimulation of the well should restore the Lower Gallup to a reasonable  
production rate and decline.

The Upper Gallup sand has never been completed in this well. We propose  
to perforate the Upper Gallup formation from 1108-1142', and stimulate  
the present Lower Gallup perforations in this well.  
Attached is the proposed workover procedure for this work.

Subsurface Safety Valve: Manu. and Type \_\_\_\_\_ Set @ \_\_\_\_\_ Ft.

18. I hereby certify that the foregoing is true and correct

SIGNED Stephen Rose TITLE Dist. Prod. Supt. DATE June 7, 1982

(This space for Federal or State office use)

APPROVED BY JAMES F. SIMS TITLE \_\_\_\_\_ DATE \_\_\_\_\_  
CONDITIONS OF APPROVAL JAN 1982

JAMES F. SIMS  
DISTRICT ENGINEER

NMOCC

\*See Instructions on Reverse Side

April 21, 1982

Proposed Workover Procedure  
HSGU #285

Well Data:

Location: 2605' FNL and 2580' FEL, Section 32-31N-16W  
San Juan County, New Mexico

Elevation: GL-5356' KB-5367'  
Log measured from KB.

Casing: 5-1/2" 15.5# J-55 set @ 1294' KB, cemented w/100  
sx Lo Dense and 90 sx Neat Class 'A'

Perfs: 1226-52' ELM (Lower Gallup)

Tubing: 1 Jt. 2-7/8" EUE, 8R, J-55, 6.5# 31.55  
1 SN 2-7/8" EUE, 8R 1.10  
38 Jts. 2-7/8" EUE, 8R, J-55, 6.5# 1191.30  
1223.95  
RKB to top of tbg head 11.50  
1235.45'

TD: 1294'

PBTD: 1260'

Workover Procedure:

1. MIRU. Pull rods and pump. Squeeze Lower Gallup perfs (1226-52' ELM) w/1 drum S-271 scale inhibitor.
2. Pull tbg. Clean out hole to PBTD w/csg scraper. Set retrievable bridge plug @ 1200' ± w/wireline. Pressure test plug and csg to 2000 psi.
3. Run Gamma Ray-CCL correlation log. Perf csg opposite Upper Gallup f/1108-42' ELM w/2 JET SPF.

4. RIH w/tbg and fill up csg and tbh w/water. Spot 500 gallons 7-1/2% HCl w/1 drum S-271 scale inhibitor.

Acid also to contain 2 gal/1,000 NAI-161 corrosion inhibitor, 2 gal/1,000 NNE-257 non-emulsifier and 1 gal/1,000 NCS-227 clay stabilizer.

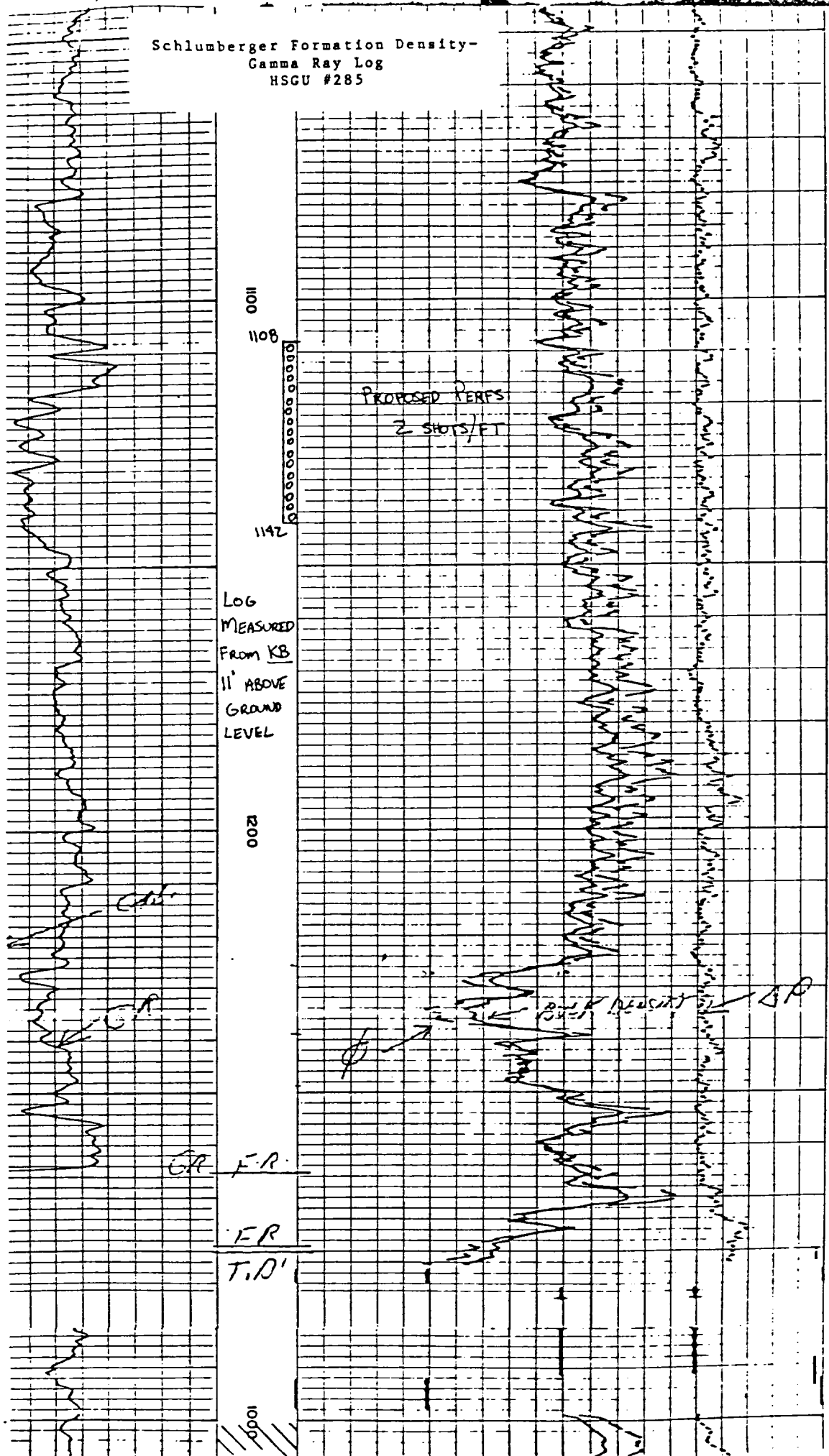
5. Pull tbh and rig up to frac down 5-1/2" csg.
6. Displace acid with Newsco NOWFRAC II LR-40. Breakdown formation. Shut down and record ISIP.
7. Frac formation at 20 BPM at approximately 1000 psi using 10,000 gallons pre-gelled Newsco\* NOWFRAC II LR-40 and 28,600 pounds 10/20 sand. Include radioactive sand for tracer survey following job. (Newsco is not licensed to handle the radioactive material, so to save money, ARCO should set this up independently.)

<u>Gals</u>	<u>Bbls</u>	<u>Prop</u>	<u>Prop Conc</u>	<u>Fluid</u>
2,000	48	-----	-----	Pad-NOWFRAC II LR-40
700	17	10/20	1 ppg	NOWFRAC II LR-40
1,000	24	10/20	2 ppg	NOWFRAC II LR-40
1,400	33	10/20	3 ppg	NOWFRAC II LR-40
2,800	67	10/20	4 ppg	NOWFRAC II LR-40
2,100	50	10/20	5 ppg	NOWFRAC II LR-40
1,110	26		Flush	2% KCl Water

\* This job was designed for Newsco Services fluids. It cannot be expected that the same results will be obtained with other fluids. If Newsco Services does not do the job, please notify Engineering Department for redesign.

8. Run tracer survey. If sand is covering perms, clean out to 10' below bottom perf and then run survey.
9. Allow sufficient time for gel to break. Clean out sand to bridge plug.
10. Retrieve bridge plug, run pumping equipment, put well on test. (Upper and Lower Gallup commingled production.)

Schlumberger Formation Density-  
Gamma Ray Log  
HSGU #285



# Horseshoe Gallup Unit Area Upper Gallup Sand Thickness

