

UNITED STATES  
DEPARTMENT OF THE INTERIOR  
GEOLOGICAL SURVEY

30-045-21749

APPLICATION FOR PERMIT TO DRILL, DEEPEN, OR PLUG BACK

1a. TYPE OF WORK

DRILL ☒

DEEPEN ☐

PLUG BACK ☐

b. TYPE OF WELL

OIL  
WELL ☒

GAS  
WELL ☐

OTHER

SINGLE  
ZONE ☐

MULTIPLE  
ZONE ☐

2. NAME OF OPERATOR

Dugan Production Corp.

3. ADDRESS OF OPERATOR

Box 234, Farmington, New Mexico 87401

4. LOCATION OF WELL (Report location clearly and in accordance with any State requirements.\*)

At surface

1650' FSL — 1650' FEL

At proposed prod. zone

14. DISTANCE IN MILES AND DIRECTION FROM NEAREST TOWN OR POST OFFICE\*

5 miles north Shiprock, New Mexico

15. DISTANCE FROM PROPOSED\*

LOCATION TO NEAREST  
PROPERTY OR LEASE LINE, FT.  
(Also to nearest drlg. unit line, if any)

1650'

16. NO. OF ACRES IN LEASE

80

17. NO. OF ACRES ASSIGNED  
TO THIS WELL

40

18. DISTANCE FROM PROPOSED LOCATION\*  
TO NEAREST WELL, DRILLING, COMPLETED,  
OR APPLIED FOR, ON THIS LEASE, FT.

19. PROPOSED DEPTH

1300'

20. ROTARY OR CABLE TOOLS

Rotary

21. ELEVATIONS (Show whether DF, RT, GR, etc.)

5088' GR

22. APPROX. DATE WORK WILL START\*

4-1-75

23.

PROPOSED CASING AND CEMENTING PROGRAM

SIZE OF HOLE	SIZE OF CASING	WEIGHT PER FOOT	SETTING DEPTH	QUANTITY OF CEMENT
8-3/4"	7"	20#	50'	10 SX
6-1/4"	4-1/2"	9.5#	1300'	50 SX

Propose to drill an 8-3/4" hole with air to 50' and run 7" surface casing cemented to surface. A 6-1/4" hole will then be drilled to approximately 1300' with air to test the Dakota formation. If commercial production is indicated, 4-1/2" production casing will be run and cemented with 10 SX and the well completed.

IN ABOVE SPACE DESCRIBE PROPOSED PROGRAM: If proposal is to deepen or plug back, give data on present productive zone and proposed new productive zone. If proposal is to drill or deepen directionally, give pertinent data on subsurface locations and measured and true vertical depths. Give blowout preventer program, if any.

24.

SIGNED Original signed by T. A. Dugan

TITLE Petroleum Engineer

DATE 3-20-75

Thomas A. Dugan

(This space for Federal or State office use)

PERMIT NO. \_\_\_\_\_

APPROVAL DATE \_\_\_\_\_

APPROVED BY CJA

TITLE \_\_\_\_\_

CONDITIONS OF APPROVAL, IF ANY:

DATE

MAR 24 1975

\*See Instructions On Reverse Side

U. S. GEOLOGICAL SURVEY  
FARMINGTON, N. M.

**NEW MEXICO OIL CONSERVATION COMMISSION  
WELL LOCATION AND ACREAGE DEDICATION PLAT**

Form C-102  
Supersedes C-128  
Effective 1-1-65

All distances must be from the outer boundaries of the Section.

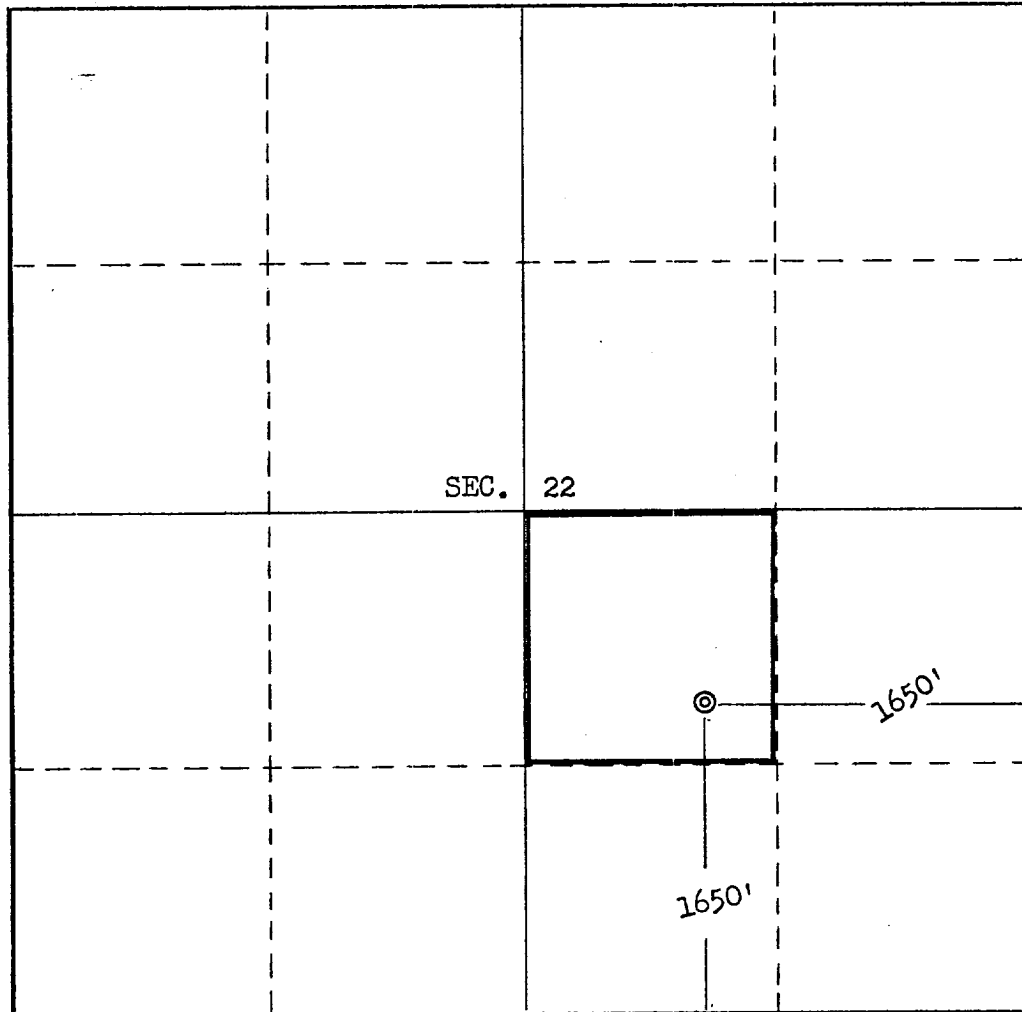
Operator <b>Dugan Production Corporation</b>			Lease <b>Ricky</b>		Well No. <b>2</b>
Unit Letter <b>J</b>	Section <b>22</b>	Township <b>31 North</b>	Range <b>18 West</b>	County <b>San Juan</b>	
Actual Footage Location of Well: <b>1650</b> feet from the <b>South</b> line and <b>1650</b> feet from the <b>East</b> line					
Ground Level Elev. <b>5088</b>	Producing Formation <b>Wildcat</b>	Pool <b>Dakota</b>		Dedicated Acreage: <b>40</b> Acres	

1. Outline the acreage dedicated to the subject well by colored pencil or hachure marks on the plat below.
2. If more than one lease is dedicated to the well, outline each and identify the ownership thereof (both as to working interest and royalty).
3. If more than one lease of different ownership is dedicated to the well, have the interests of all owners been consolidated by communitization, unitization, force-pooling, etc?

☐ Yes    ☐ No    If answer is "yes," type of consolidation \_\_\_\_\_

If answer is "no," list the owners and tract descriptions which have actually been consolidated. (Use reverse side of this form if necessary.) \_\_\_\_\_

No allowable will be assigned to the well until all interests have been consolidated (by communitization, unitization, forced-pooling, or otherwise) or until a non-standard unit, eliminating such interests, has been approved by the Commission.

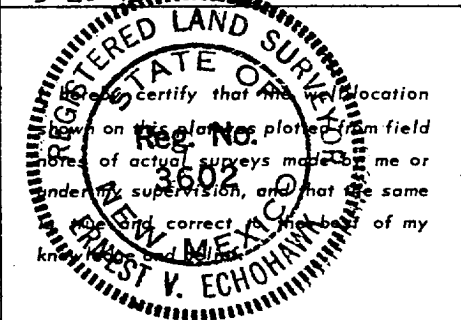


**CERTIFICATION**

*I hereby certify that the information contained herein is true and complete to the best of my knowledge and belief.*

Original signed by T. A. Dugan

Name
<b>Thomas A. Dugan</b>
Position
<b>Petroleum Engineer</b>
Company
<b>Dugan Production Corp.</b>
Date
<b>3-20-75</b>



Date Surveyed
<b>March 12, 1975</b>
Registered Professional Engineer and/or Land Surveyor

*E. V. Echohawk*  
 Certificate No. **3602**  
**E.V. Echohawk LS**

