

UNITED STATES
DEPARTMENT OF THE INTERIOR
GEOLOGICAL SURVEY

30-045-21794

APPLICATION FOR PERMIT TO DRILL, DEEPEN, OR PLUG BACK

1a. TYPE OF WORK

DRILL ☒DEEPEN ☐PLUG BACK ☐

b. TYPE OF WELL

OIL
WELL ☐GAS
WELL ☒

OTHER

SINGLE
ZONE ☒MULTIPLE
ZONE ☐

2. NAME OF OPERATOR

Aztec Oil & Gas Company

3. ADDRESS OF OPERATOR

P. O. Drawer 570, Farmington, New Mexico

4. LOCATION OF WELL (Report location clearly and in accordance with any State requirements.)*

At surface

1150' FNL & 1500' FEL

At proposed prod. zone

14. DISTANCE IN MILES AND DIRECTION FROM NEAREST TOWN OR POST OFFICE

15. DISTANCE FROM PROPOSED*

LOCATION TO NEAREST
PROPERTY OR LEASE LINE, FT.
(Also to nearest drilg. unit line, if any)18. DISTANCE FROM PROPOSED LOCATION*
TO NEAREST WELL, DRILLING, COMPLETED,
OR APPLIED FOR, ON THIS LEASE, FT.

16. NO. OF ACRES, IN LEASE

320

19. PROPOSED DEPTH

5600

17. NO. OF ACRES ASSIGNED
TO THIS WELL

320.69

20. ROTARY OR CABLE TOOLS

Rotary

21. ELEVATIONS (Show whether DF, RT, GR, etc.)

6487' GR

22. APPROX. DATE WORK WILL START*

23.

PROPOSED CASING AND CEMENTING PROGRAM

| SIZE OF HOLE | SIZE OF CASING | WEIGHT PER FOOT | SETTING DEPTH | QUANTITY OF CEMENT |
|--------------|----------------|-----------------|---------------|--------------------|
| 15" | 9-5/8" | 32.30 | 300 | 300 sxs |
| 8-5/4" | 7" | 23 | 5200 | 200 sxs |
| 6-3/4" | 4-1/2" | 10.50 | 5100 - 5600 | 150 sxs |
| | 1-1/2" | 2.9 | 5550 | |

PROPOSE TO:

Drill 15" hole.

Set 300' of 9-5/8" surface casing. Cement with 300 sxs.

Drill 8-5/4" hole to approximately 5200'.

Run 7" casing. Cement with 200 sxs.

Gas drill 6-3/4" hole to 5600'.

Run 4-1/2" liner from 5100 to 5600'. Cement with 150 sxs.

Perforate Mesaverde formation.

Sand/water frac Mesaverde with 40,000 gallons water and 40,000# sand.

Run 1-1/2" tubing.

Install well head.

RECEIVED
MAY 13 1975
U.S. GEOLOGICAL SURVEY
FARMINGTON, N.M.

IN ABOVE SPACE DESCRIBE PROPOSED PROGRAM: If proposal is to deepen or plug back, give data on present productive zone and proposed new productive zone. If proposal is to drill or deepen directionally, give pertinent data on subsurface locations and measured and true vertical depths. Give blowout preventer program, if any.

24.

SIGNED



TITLE District Superintendent

DATE May 1, 1975

(This space for Federal or State office use)

PERMIT NO.

APPROVAL DATE

APPROVED BY



TITLE

DATE

CONDITIONS OF APPROVAL, IF ANY:

*See Instructions On Reverse Side

**NEW MEXICO OIL CONSERVATION COMMISSION
WELL LOCATION AND ACREAGE DEDICATION PLAT**

Form C-102
Supersedes C-128
Effective 1-1-65

All distances must be from the outer boundaries of the Section.

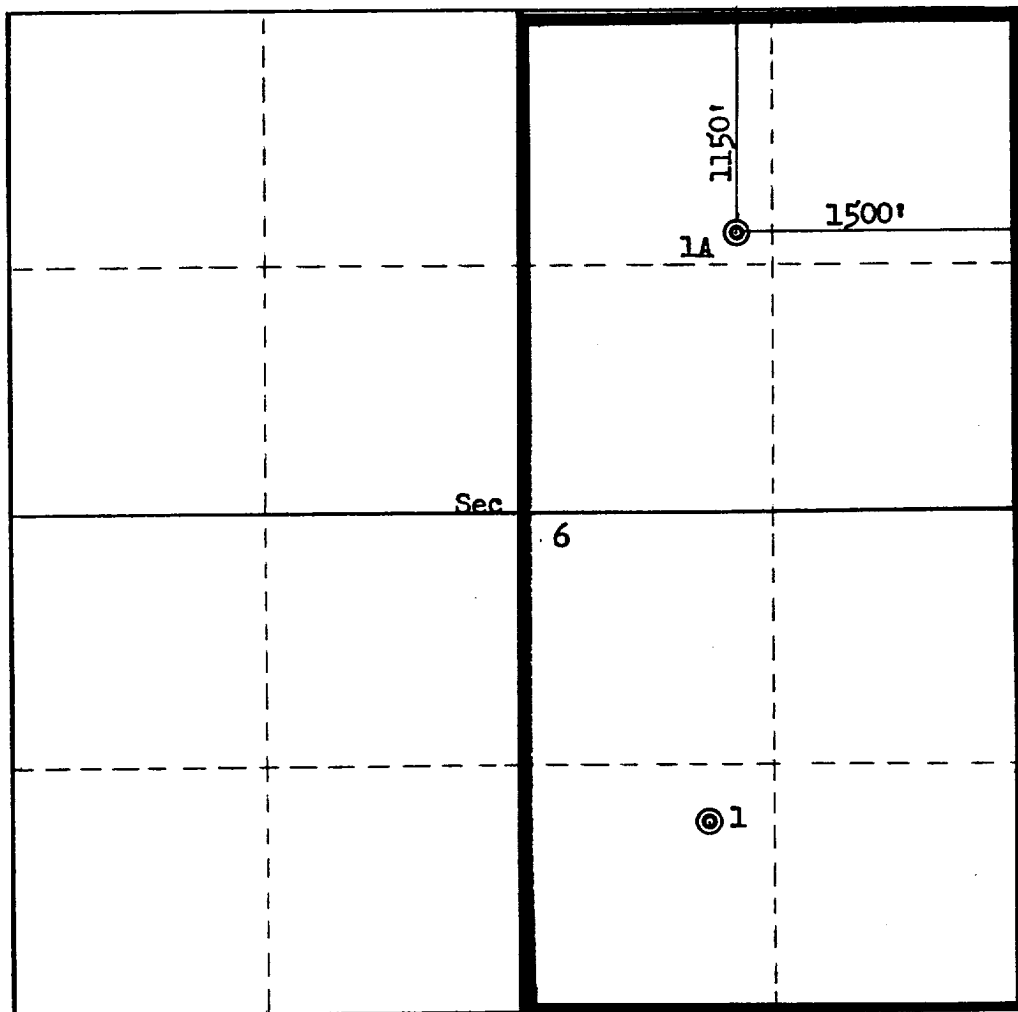
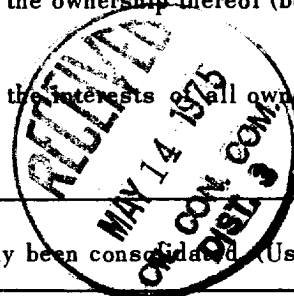
| | | | | | |
|--|--|------------------------|---|---------------------------|-----------------------|
| Operator Aztec Oil & Gas Company | | | Lease Grenier | | Well No. 1A |
| Unit Letter B | Section 6 | Township 31N | Range 11W | County San Juan | |
| Actual Footage Location of Well: 1150 feet from the North line and 1500 feet from the East line | | | | | |
| Ground Level Elev. 6487 | Producing Formation Mesa Verde | Pool Blanco | Dedicated Acreage: 320.69 Acres | | |

1. Outline the acreage dedicated to the subject well by colored pencil or hachure marks on the plat below.
2. If more than one lease is dedicated to the well, outline each and identify the ownership thereof (both as to working interest and royalty).
3. If more than one lease of different ownership is dedicated to the well, have the interests of all owners been consolidated by communitization, unitization, force-pooling, etc?

☐ Yes ☐ No If answer is "yes," type of consolidation _____

If answer is "no," list the owners and tract descriptions which have actually been consolidated (Use reverse side of this form if necessary.) _____

No allowable will be assigned to the well until all interests have been consolidated (by communitization, unitization, forced-pooling, or otherwise) or until a non-standard unit, eliminating such interests, has been approved by the Commission.



CERTIFICATION

I hereby certify that the information contained herein is true and complete to the best of my knowledge and belief.

Joe C. Salmon

Name
District Superintendent
Position
Aztec Oil & Gas Company
Company
May 1, 1975
Date

I hereby certify that the well location shown on this plat was plotted from field notes of actual surveys made by me or under my supervision, and that the same is true and correct to the best of my knowledge and belief.

Date Surveyed
April 25, 1975
Registered Professional Engineer and/or Land Surveyor
Fred B. Kear
Fred B. Kear
Certificate No.
3950

