

UNITED STATES
DEPARTMENT OF THE INTERIOR
GEOLOGICAL SURVEY

30-045-21795

APPLICATION FOR PERMIT TO DRILL, DEEPEN, OR PLUG BACK

1a. TYPE OF WORK

DRILL ☒DEEPEN ☐PLUG BACK ☐

b. TYPE OF WELL

OIL
WELL ☐GAS
WELL ☒

OTHER

SINGLE
ZONE ☒MULTIPLE
ZONE ☐

2. NAME OF OPERATOR

Aztec Oil & Gas Company

3. ADDRESS OF OPERATOR

P. O. Drawer 570, Farmington, New Mexico

4. LOCATION OF WELL (Report location clearly and in accordance with any State requirements.)

At surface

1065' FSL & 1050' FWL

At proposed prod. zone

14. DISTANCE IN MILES AND DIRECTION FROM NEAREST TOWN OR POST OFFICE*

15. DISTANCE FROM PROPOSED*

LOCATION TO NEAREST
PROPERTY OR LEASE LINE, FT.
(Also to nearest drlg. unit line, if any)

16. NO. OF ACRES IN LEASE

318.80

17. NO. OF ACRES ASSIGNED
TO THIS WELL

318.80

18. DISTANCE FROM PROPOSED LOCATION*

TO NEAREST WELL, DRILLING, COMPLETED,
OR APPLIED FOR, ON THIS LEASE, FT.

19. PROPOSED DEPTH

5400

20. ROTARY OR CABLE TOOLS

Rotary

21. ELEVATIONS (Show whether DF, RT, GR, etc.)

6198' GR

22. APPROX. DATE WORK WILL START*

23.

PROPOSED CASING AND CEMENTING PROGRAM

SIZE OF HOLE	SIZE OF CASING	WEIGHT PER FOOT	SETTING DEPTH	QUANTITY OF CEMENT
15"	9-5/8"	32.30	300	300 sxs
8-3/4"	7"	23	5000	200 sxs
6-3/4"	4-1/2"	10.50	4900 - 5400	150 sxs
	1-1/2"	2.9	5350	

PROPOSE TO:

Drill 15" hole.

Set 300' of 9-5/8" casing. Cement with 300 sxs.

Drill 8-3/4" hole to approximately 5000'.

Run 7" casing. Cement with 200 sxs.

Gas drill 6-3/4" hole to approximately 5400'.

Run 4-1/2" liner from 4900 to 5400'. Cement with 150 sxs.

Perforate Mesaverde formation.

Sand/water frac with 40,000 gallons water and 40,000# sand.

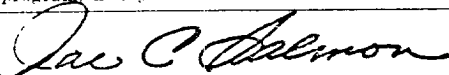
Run 1-1/2" tubing.

Install well head.

IN ABOVE SPACE DESCRIBE PROPOSED PROGRAM: If proposal is to deepen or plug back, give data on present productive zone and proposed new productive zone. If proposal is to drill or deepen directionally, give pertinent data on subsurface locations and measured and true vertical depths. Give blowout preventer program, if any.

24.

SIGNED



TITLE District Superintendent

DATE May 1, 1975

(This space for Federal or State office use)

PERMIT NO.

APPROVAL DATE

APPROVED BY



TITLE

DATE

CONDITIONS OF APPROVAL, IF ANY:

*See Instructions On Reverse Side

**NEW MEXICO OIL CONSERVATION COMMISSION
WELL LOCATION AND ACREAGE DEDICATION PLAT**

Form C-102
Supersedes C-128
Effective 1-1-65

All distances must be from the outer boundaries of the Section.

Operator Aztec Oil & Gas Company			Lease Grenier		Well No. 4A
Unit Letter M	Section 7	Township 31N	Range 11W	County San Juan	
Actual Footage Location of Well: 1065 feet from the South line and 1050 feet from the West line					
Ground Level Elev. 6198	Producing Formation Mesa Verde		Pool Blanco	Dedicated Acreage: 318.80 Acres	

1. Outline the acreage dedicated to the subject well by colored pencil or hand-drawn marks on the plat below.

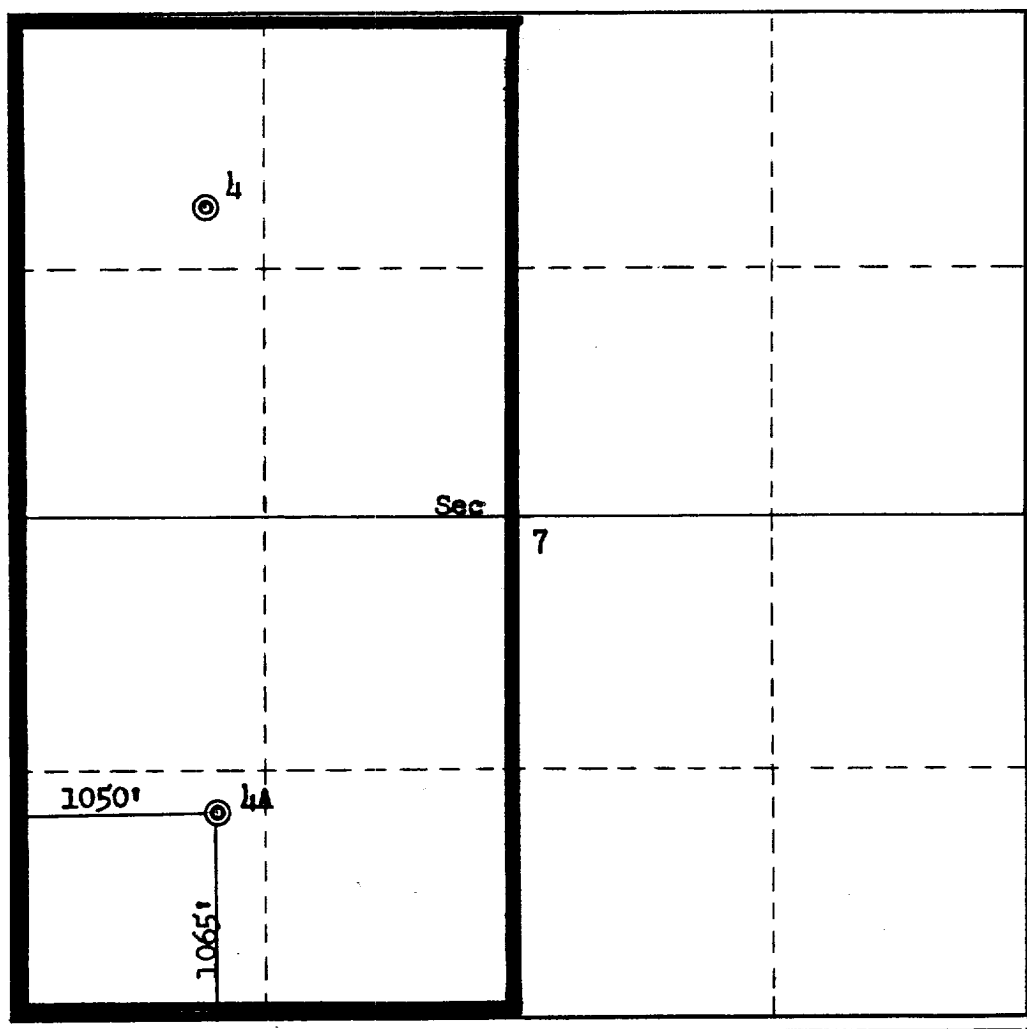
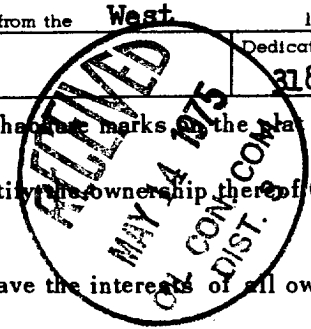
2. If more than one lease is dedicated to the well, outline each and identify the ownership thereof (both as to working interest and royalty).

3. If more than one lease of different ownership is dedicated to the well, have the interests of all owners been consolidated by communitization, unitization, force-pooling, etc?

☐ Yes ☐ No If answer is "yes," type of consolidation _____

If answer is "no," list the owners and tract descriptions which have actually been consolidated. (Use reverse side of this form if necessary.) _____

No allowable will be assigned to the well until all interests have been consolidated (by communitization, unitization, forced-pooling, or otherwise) or until a non-standard unit, eliminating such interests, has been approved by the Commission.



CERTIFICATION	
I hereby certify that the information contained herein is true and complete to the best of my knowledge and belief.	
Name <i>Law C. Salmon</i>	Position District Superintendent
Company Aztec Oil & Gas Company	
Date May 1, 1975	
I hereby certify that the well location shown on this plat was plotted from field notes of actual surveys made by me or under my supervision, and that the same is true and correct to the best of my knowledge and belief.	
Date Surveyed April 25, 1975	
Registered Professional Engineer and/or Land Surveyor <i>Fred B. Kerr Jr.</i>	
Certificate No. 3950	