

# AZTEC OIL & GAS COMPANY

P. O. DRAWER 570  
FARMINGTON, NEW MEXICO 87401

May 1, 1975

United States Geological Survey  
P. O. Box 959  
Farmington, New Mexico

Attention: Mr. P. T. McGrath

Dear Sir:

Enclosed please find map showing existing roads and planned access roads to Aztec Oil & Gas Company's Pierce #1-A well. The locations of tank batteries and flow lines will be on location with well.

There will be no camps or air strips.

Also enclosed is location layout showing approximate location of rig, pits and pipe rights.

Water supply will be San Juan River.

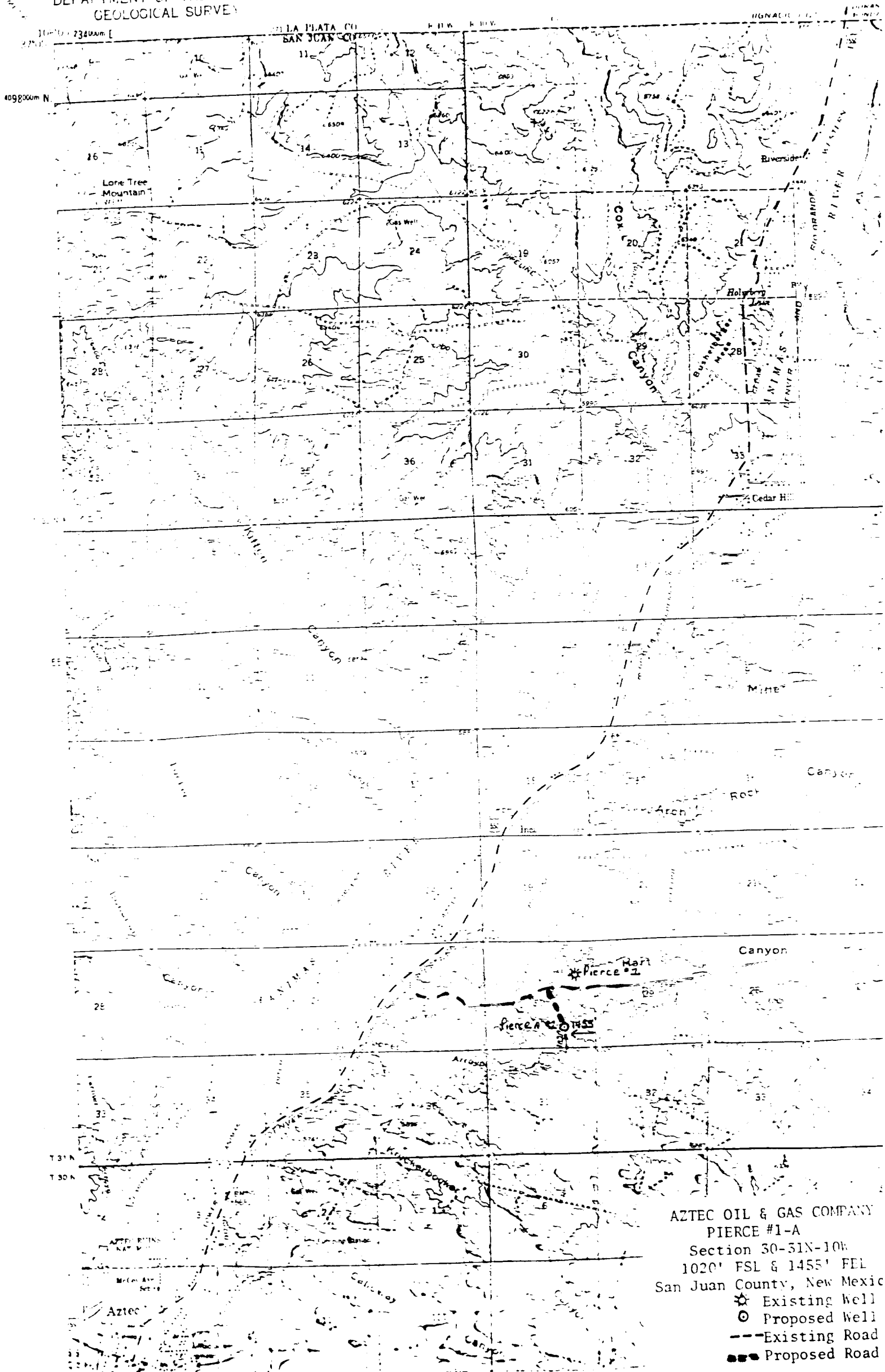
In the event of a dry hole, location will be graded and reseeded according to Bureau of Land Management standards.

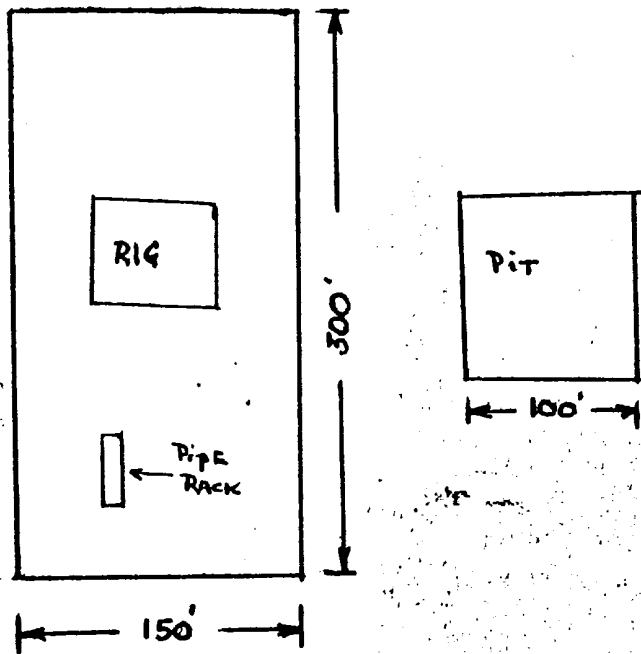


Joe C. Salmon  
District Superintendent

JCS/dg

UNITED STATES  
DEPARTMENT OF THE INTERIOR  
GEOLOGICAL SURVEY





LOCATION LAYOUT

# AZTEC OIL & GAS COMPANY

P.O. DRAWER 570  
FARMINGTON, NEW MEXICO 87401

May 1, 1975

United States Geological Survey  
P. O. Box 959  
Farmington, New Mexico

Attention: Mr. P. T. McGrath

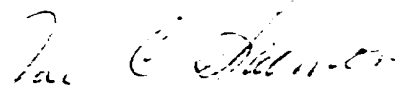
RE: Blowout Preventer Plan

Dear Sir:

All drilling and completion wells will be equipped with 8" Shaffer LWP double hydraulic blowout preventers and a 2000 "C" Payne Hydraulic closing unit with steel line.

The preventer is 3000# working pressure and 6000# test.

All crews will be thoroughly trained in the operation of this preventer. The preventer will be tested at the beginning of every tower change to insure proper operation.



Joe C. Salmon  
District Superintendent

JCS/dg