

UNITED STATES  
DEPARTMENT OF THE INTERIOR  
GEOLOGICAL SURVEY

30-045-21799

5. LEASE DESIGNATION AND SERIAL NO.

SF-077652

6. IF INDIAN, ALLOTTEE OR TRIBE NAME

7. UNIT AGREEMENT NAME

8. FARM OR LEASE NAME

East

9. WELL NO.

#22

10. FIELD AND POOL, OR WILDCAT

Blanco Mesaverde

11. SEC., T., R., M., OR BLK.  
AND SURVEY OR AREA

Section 26-31N-12W

12. COUNTY OR PARISH

San Juan

13. STATE

New Mexico

## APPLICATION FOR PERMIT TO DRILL, DEEPEN, OR PLUG BACK

1a. TYPE OF WORK

DRILL ☒DEEPEN ☐PLUG BACK ☐

b. TYPE OF WELL

OIL  
WELL ☐GAS  
WELL ☒

OTHER

SINGLE  
ZONE ☒MULTIPLE  
ZONE ☐

2. NAME OF OPERATOR

Aztec Oil &amp; Gas Company

3. ADDRESS OF OPERATOR

P. O. Drawer 570, Farmington, New Mexico

4. LOCATION OF WELL (Report location clearly and in accordance with any State requirements.)

At surface

1760' ENL &amp; 940' FEL

At proposed prod. zone

14. DISTANCE IN MILES AND DIRECTION FROM NEAREST TOWN OR POST OFFICE\*

15. DISTANCE FROM PROPOSED\*

LOCATION TO NEAREST  
PROPERTY OR LEASE LINE, FT.  
(Also to nearest drlg. unit line, if any)

16. NO. OF ACRES IN LEASE

320

17. NO. OF ACRES ASSIGNED  
TO THIS WELL

320

18. DISTANCE FROM PROPOSED LOCATION\*  
TO NEAREST WELL, DRILLING COMPLETED,  
OR APPLIED FOR, ON THIS LEASE, FT.

19. PROPOSED DEPTH

5500

20. ROTARY OR CABLE TOOLS

Rotary

21. ELEVATIONS (Show whether DF, RT, GR, etc.)

6004 FR

22. APPROX. DATE WORK WILL START\*

23.

## PROPOSED CASING AND CEMENTING PROGRAM

SIZE OF HOLE	SIZE OF CASING	WEIGHT PER FOOT	SETTING DEPTH	QUANTITY OF CEMENT
15"	9-5/8"	32.30	300	500 sxs.
8-3/4"	7"	25	5100	200 sxs
6-3/4"	4-1/2"	10.50	5000 - 5500	150 sxs
	1-1/2"	2.90	5450	

MAY 13 1975

PROPOSE TO:

Drill 15" hole.

Set 300' of 9-5/8" surface casing. Cement with 500 sxs.

Drill 8-3/4" hole to approximately 5100'.

Run 7" casing. Cement with 200 sxs.

Gas drill 6-3/4" hole to approximately 5500'.

Run 4-1/2" liner from 5000 to 5500'. Cement with 150 sxs.

Perforate Mesaverde formation.

Sand/water frac with 40,000 gallons water and 40,000# sand.

Run 1-1/2" tubing.

Install well head.

IN ABOVE SPACE DESCRIBE PROPOSED PROGRAM: If proposal is to deepen or plug back, give data on present productive zone and proposed new productive zone. If proposal is to drill or deepen directionally, give pertinent data on subsurface locations and measured and true vertical depths. Give blowout preventer program, if any.

24.

SIGNED



TITLE

District Superintendent

DATE

May 12, 1975

(This space for Federal or State office use)

PERMIT NO.

APPROVAL DATE

APPROVED BY

TITLE

DATE

CONDITIONS OF APPROVAL, IF ANY

\*See Instructions On Reverse Side

**NEW MEXICO OIL CONSERVATION COMMISSION  
WELL LOCATION AND ACREAGE DEDICATION PLAT**

Form O-101  
Supersedes O-128  
Effective 1-1-67

All distances must be from the outer boundaries of the Section.

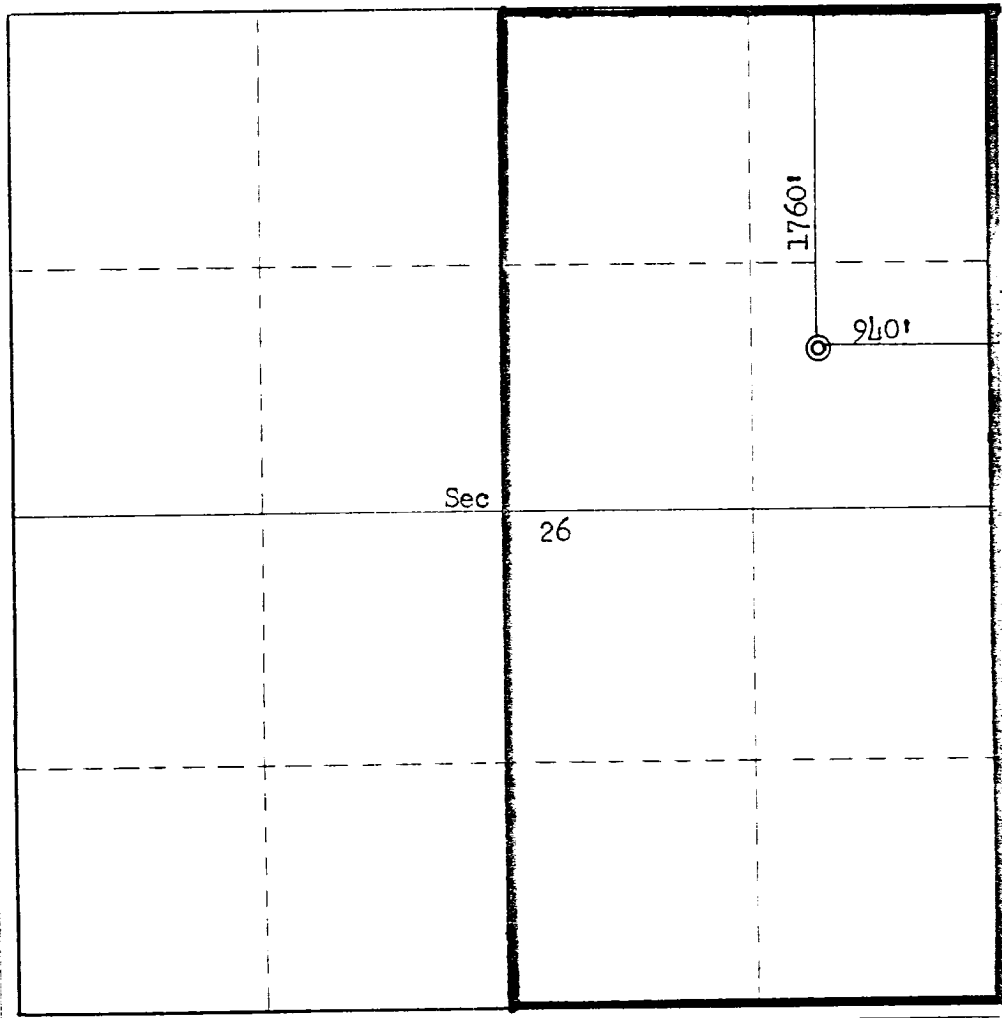
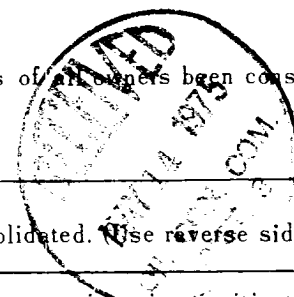
Operator <b>Aztec Oil &amp; Gas Company</b>			Lease <b>East</b>		Well No. <b>22</b>
Tract Letter <b>H</b>	Section <b>26</b>	Township <b>31N</b>	Range <b>12W</b>	County <b>San Juan</b>	
Actual Footage Location of Well:					
<b>1760</b> feet from the <b>North</b> line and		<b>940</b> feet from the <b>East</b> line			
Ground Level Elev. <b>6007</b>	Producing Formation <b>Mesa Verde</b>	Pool <b>Blanco</b>		Dedicated Acreage <b>320</b>	Acres

1. Outline the acreage dedicated to the subject well by colored pencil or hachure marks on the plat below.
2. If more than one lease is dedicated to the well, outline each and identify the ownership thereof (both as to working interest and royalty).
3. If more than one lease of different ownership is dedicated to the well, have the interests of all owners been consolidated by communitization, unitization, force-pooling, etc?

☐ Yes    ☐ No    If answer is "yes," type of consolidation \_\_\_\_\_

If answer is "no," list the owners and tract descriptions which have actually been consolidated. (Use reverse side of this form if necessary.) \_\_\_\_\_

No allowable will be assigned to the well until all interests have been consolidated (by communitization, unitization, forced-pooling, or otherwise) or until a non-standard unit, eliminating such interests, has been approved by the Commission.



**CERTIFICATION**

I hereby certify that the information contained herein is true and complete to the best of my knowledge and belief.

Name \_\_\_\_\_  
*Joe C. Salmon*  
 Position \_\_\_\_\_  
 District Superintendent  
 Company \_\_\_\_\_  
 Aztec Oil & Gas Company  
 Date \_\_\_\_\_  
 May 12, 1975

I hereby certify that the well location shown on this plat was plotted from field notes of actual surveys made by me or under my supervision, and that the same is true and correct to the best of my knowledge and belief.

Date Surveyed \_\_\_\_\_  
 May 8, 1975  
 Registered Professional Engineer  
 and/or Land Surveyor  
*Fred B. Kerr Jr.*  
 Fred B. Kerr Jr.  
 Certificate No. \_\_\_\_\_

**3950**

