

UNITED STATES
DEPARTMENT OF THE INTERIOR
BUREAU OF LAND MANAGEMENT

RECEIVED
BLM

FORM APPROVED
Budget Bureau No. 1004-0135
Expires: March 31, 1993

SUNDRY NOTICES AND REPORTS ON WELLS

Do not use this form for proposals to drill or to deepen or reentry to a different reservoir.
Use "APPLICATION FOR PERMIT—" for such proposals.

SUBMIT IN TRIPLICATE

1. Type of Well

☐ Oil Well ☒ Gas Well ☐ Other

2. Name of Operator

CONOCO INC.

3. Address and Telephone No.

10 DESTA DR. STE. 100W, MIDLAND, TX. 79705-4500 (915) 686-5424

4. Location of Well (Footage, Sec., T. R. M. or Survey Description)

Section 6, T-31-N, R-10-W, D
1190' FNL & 1190' FWL

5. Lease Designation and Serial No.

SF 078215B

6. If Indian, Allottee or Tribe Name

7. If Unit or C.A. Agreement Designation

8. Well Name and No.

Primo #1A

9. API Well No.

30-045-21827

10. Field and Pool, or Exploratory Area

Blanco Mesaverde

11. County or Parish, State

San Juan, NM

CHECK APPROPRIATE BOX(S) TO INDICATE NATURE OF NOTICE, REPORT, OR OTHER DATA

TYPE OF SUBMISSION

- ☒ Notice of Intent
☐ Subsequent Repon
☐ Final Abandonment Notice

TYPE OF ACTION

- ☐ Abandonment
☐ Recompletion
☐ Plugging Back
☐ Casing Repair
☐ Altering Casing
☒ Other Re-open zone
☐ Change of Plans
☐ New Construction
☐ Non-Routine Fracuring
☐ Water Shut-Off
☐ Conversion to Injection
☐ Dispose Water

(Note: Repon results of multiple completion on Wdl Completion or Recompletion Report and Log form.)

13. Describe Proposed or Completed Operations (Clearly state all pertinent details, and give pertinent dates, including estimated date of starting any proposed work. If well is directionally drilled, give subsurface locations and measured and true vertical depths for all markers and zones pertinent to this work.)*

It is proposed to re-open the Mesaverde in this well using the attached procedure.

RECEIVED
JAN 19 1999
OIL CON. DIV.
DIST. 3

14. I hereby certify that the foregoing is true and correct

Signed

Kay Maddox

Title

Kay Maddox

Regulatory Agent

Date

12/10/98

(This space for Federal or State office use)

Approved by

Kay Maddox

Title

Date

1/14/99

Conditions of approval if any

BLM(6), SHEAR, PONCA, COST ASST, FILE ROOM

Title 18 U.S.C. Section 1001, makes it a crime for any person knowingly and willfully to make to any department or agency of the United States any false, fictitious or fraudulent statements or representations as to any matter within its jurisdiction.

*See Instruction on Reverse Side

MAILED

Primo 1A
Optimize by Dual Completion
Produce Pictured Cliffs Up Short String
Down Hole Commingle Chacra & MV,
November 16, 1998

API# 300452182700

Location: TWS – 31N, R – 10 W, SEC – 6, QTR NW NW, 1190' FNL, 1190' FWL
San Juan County, NM.

DHC Order No. _____

Funds in the amount of \$50,125 are requested to pull the triple completion and dual complete this well combining the Chacra and Mesa Verde production up a plunger lifted 2.375" production string isolated by packer from the Pictured Cliffs which will produce up a plunger lifted 2.375" short string.

Objective

The Primo 1A is a triple completed well with all zones handicapped by the completion itself. The PC produces approx. 400 Mcfd up 7" annulus occupied by two tubing strings without the aid of plunger lift and tubing to help prevent fluid loading. The Chacra produces approx. 300 Mcfd up 4.5" annulus occupied by a 2" tubing string without the aid of plunger lift and a tubing string, and the Mesa Verde produces up a 2" tubing string with 1.25" coiled tubing in it. It is anticipated that by optimizing this well we can improve production from the PC and Chacra and add 200 Mcfd from the MV to aid in keeping the Chacra from loading up with water.

Well Data

KB – 5956', Grd – 5943'

Surface Casing – 10.75", 32.75#, Grade?, 6 joints, set @ 164', TOC – Cmt circ.

Intermediate Casing – 7", 20#, 6.46" ID, K-55, 2 joints to 61'
7", 23#, 6.37" ID, K-55, 4 joints to 196'
7", 23#, 6.37" ID, N-80, 1 joint to 239'
7", 26#, 6.28" ID, K-55, 26 joints to 1265', 300 sx cement
7", 29#, 6.19" ID, N-80, 44 joints to 3016', TOC @ 1550' by TS.

Production Liner - 4.5", 10.5#, 4.05" ID, CW-55, 46 joints from 2801' to 4631',
TOC – cmt. circ. (Burns Liner Hanger 7" x 4.5" @ 2801')

Liner – 2.875", 6.5#, 2.441" ID, 17 joints from 4560' to 5109'.

Tubing Strings – Short - 2.063", 3.25#, 89 joints to 2768'
Long – 2.063", 3.25#, 105 joints to 4516', w/Baker Model J Pkr @ 2765'
& Baker Lok Set Pkr @ 4050' (Both Pkrs release by pulling up)
Coiled Tubing – 1.25", 1.09" ID, 0 – 4492', is landed in seal assembly in
long string.

Primo 1A
Optimize by Dual Completion
Produce Pictured Cliffs Up Short String
Down Hole Commingle Chacra & MV,
November 16, 1998

Procedure

1) Pull Tubing Strings

A) Hold safety meeting, review procedure, discuss potential hazards, look at well head. Decide rig up and equipment placement details. Shut well in, lock out valves and lines, blow down lines and equipment. Rig up on well.

B) Pull coiled tubing out of long string. Cut up with tubing cutter while pulling out or if necessary spool up.

C) Pull short string laying down (2.063" tubing, 89 joints), kill tubing and well with minimum amount of 1% KCl water.

D) Pull long string (2.063"OD, 105 joints), laying down, kill tubing and well with minimum amount of 1% KCl water. Long string has two retrievable packers, a 7" Baker Model J @ 2765', and 4.5" Baker Lok Set @ 4050', both packer release by straight over pull upwards.

NOTE: Check 4.5" Baker Lok Set packer for 1.978" ID, if OK send in to have redressed.

2) RIH and Clean Out to TD

A) Pick up 2" bit and 20 joints of 1.25" work string (there is 549' of 2-7/8" liner on bottom), TIH, x-over and TIH picking up 2.375" tubing, clean out and unload to TD @ 5082' or at least to below bottom perforation @ 5020'.

B) Pull out of hole 2.375" tubing standing back, lay down 1.25" work string & bit.

3) TIH Long String and Packer

A) TIH 55 joints of 2.375" tubing with collar on bottom, seating nipple above it (collar will not enter 2-7/8" liner). Top of 4.5" liner @ 2796, top of 2-7/8" liner @ 4560'.

B) Make up Redressed 4.5"OD, 1.978" Baker Model "A-3" Lok Set packer or use new one if necessary, into string. TIH tail pipe & packer on 2.375" tubing.

C) Continue TIH with 93 joints 2.375" tubing, go slow on 94th joint when packer is about to enter 4.5" liner top @ 2796'. TIH 3 more joints to tag 2-7/8" liner top at 4560', pull up one joint, rotate to right while slacking off to set packer slips, set down 6000# then pull up 10000-12000# upstrain to engage lower slips, followed by set down of 6000# - 12000# to set pack off force, land tubing.


D) Install surface valve to keep shut in while running and landing short string.

**Primo 1A
Optimize by Dual Completion
Produce Pictured Cliffs Up Short String
Down Hole Commingle Chacra & MV,
November 16, 1998**

4) TIH Short String

- A) TIH with 2.375" tubing with mule shoe on bottom and seating nipple above it.
Land tubing @ 2717' (mid perf of PC). TOP of 4.5" liner @ 2796'
- B) Nipple up well head and swab in long string and short string if necessary.
- C) Nipple up plunger lift lubricators and flow lines.

5) Notify Operator to put on production, be sure all lock outs and tag outs are cleared.


San Juan West Area Team

Cc: Central Records (Midland), Tom Lentz, Linda Hernandez, Greg Vick or Project Lead to do Job (Farmington, NM).

NEW MEXICO OIL CONSERVATION COMMISSION
WELL LOCATION AND ACREAGE DEDICATION PLAT

Form C-102
Supersedes C-128
Effective 1-1-65

All distances must be from the outer boundaries of the Section.

Mesa Petroleum Co.			Lease Primo Federal		Well No. 1 A
Section D	Section 6	Township 31 North	Range 10 West	County San Juan	
North line and 1190 feet from the West line					
1190		1190		Dedicated Acreage: 30.159 320	
5943		Blanco		Dedicated Acreage: 30.159 320	

1. Outline the acreage dedicated to the subject well by colored pencil or hatchure marks on the plat below.

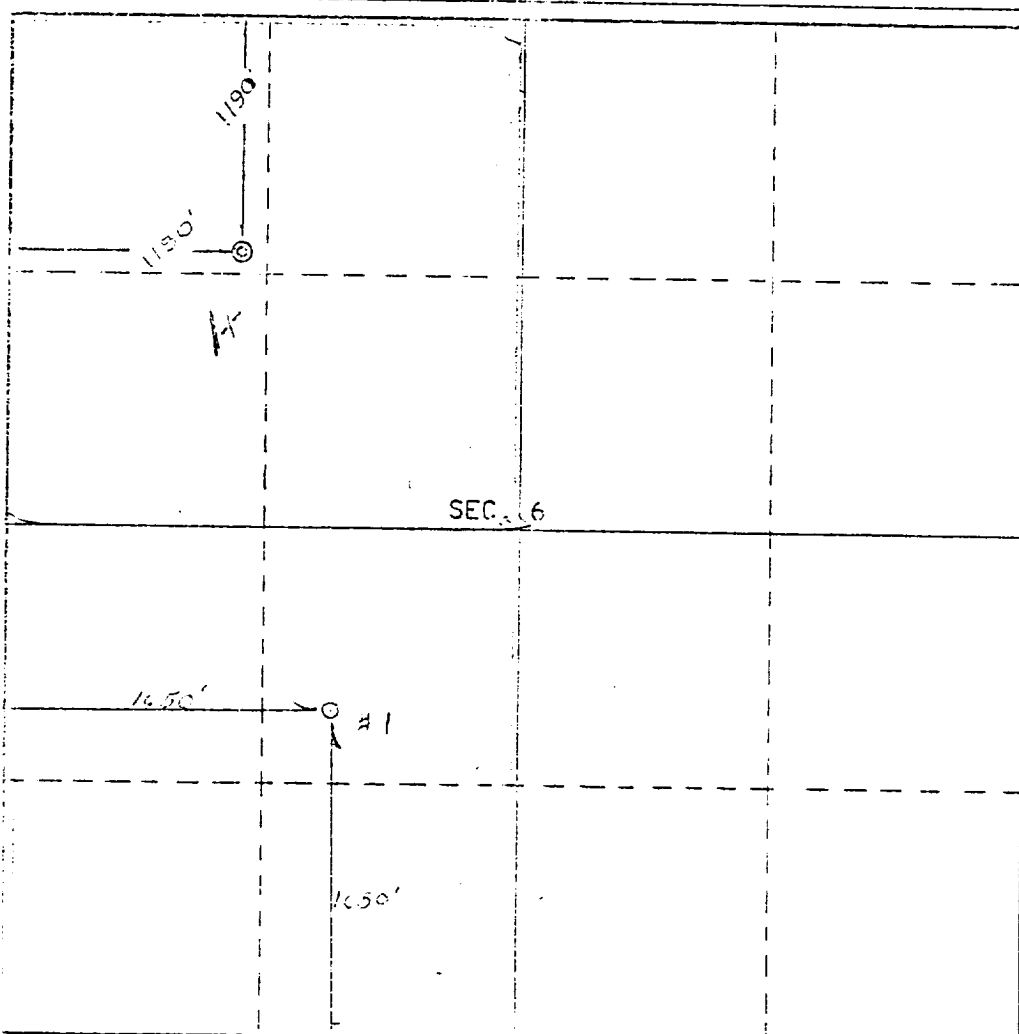
2. If more than one lease is dedicated to the well, outline each and identify the ownership thereof (both as to working interest and royalty).

3. If more than one lease of different ownership is dedicated to the well, have the interests of all owners been consolidated by communitization, unitization, force-pooling, etc?

☐ Yes ☐ No If answer is "yes," type of consolidation _____

If answer is "no," list the owners and tract descriptions which have actually been consolidated. (Use reverse side of this form if necessary.) _____

No allowable will be assigned to the well until all interests have been consolidated (by communitization, unitization, forced-pooling, or otherwise) or until a non-standard unit, eliminating such interests, has been approved by the Commission.



CERTIFICATION

I hereby certify that the information contained herein is true and complete to the best of my knowledge and belief.

R. J. Flaker

Name
R. J. Flaker

Position
Prod. Engr.

Company
Mesa Petroleum Co.

Date
3/12/75

I hereby certify that the well location shown on this plat was plotted from field notes of actual surveys made by me or under my supervision, and that the same is true and correct to the best of my knowledge and belief.

Date Surveyed
January 15, 1975

Plotted and Located by
E.V. Echchawk LS

E.V. Echchawk

Plotted by No. 3602
E.V. Echchawk LS